

**Subject : Creation of 4 Temporary Restricted Areas (ZRT) and 1 Temporary Danger Area (ZDT) for a drone flying out of sight over the English channel**

**With effect : From 14 September to 18 December 2020**

Location: FIR : Paris LFFF, London EGTT - AD : Calais LFAC, Saint Inglevert LFIS, Le Touquet LFAT, Berck sur Mer LFAM, Lydd EGMD

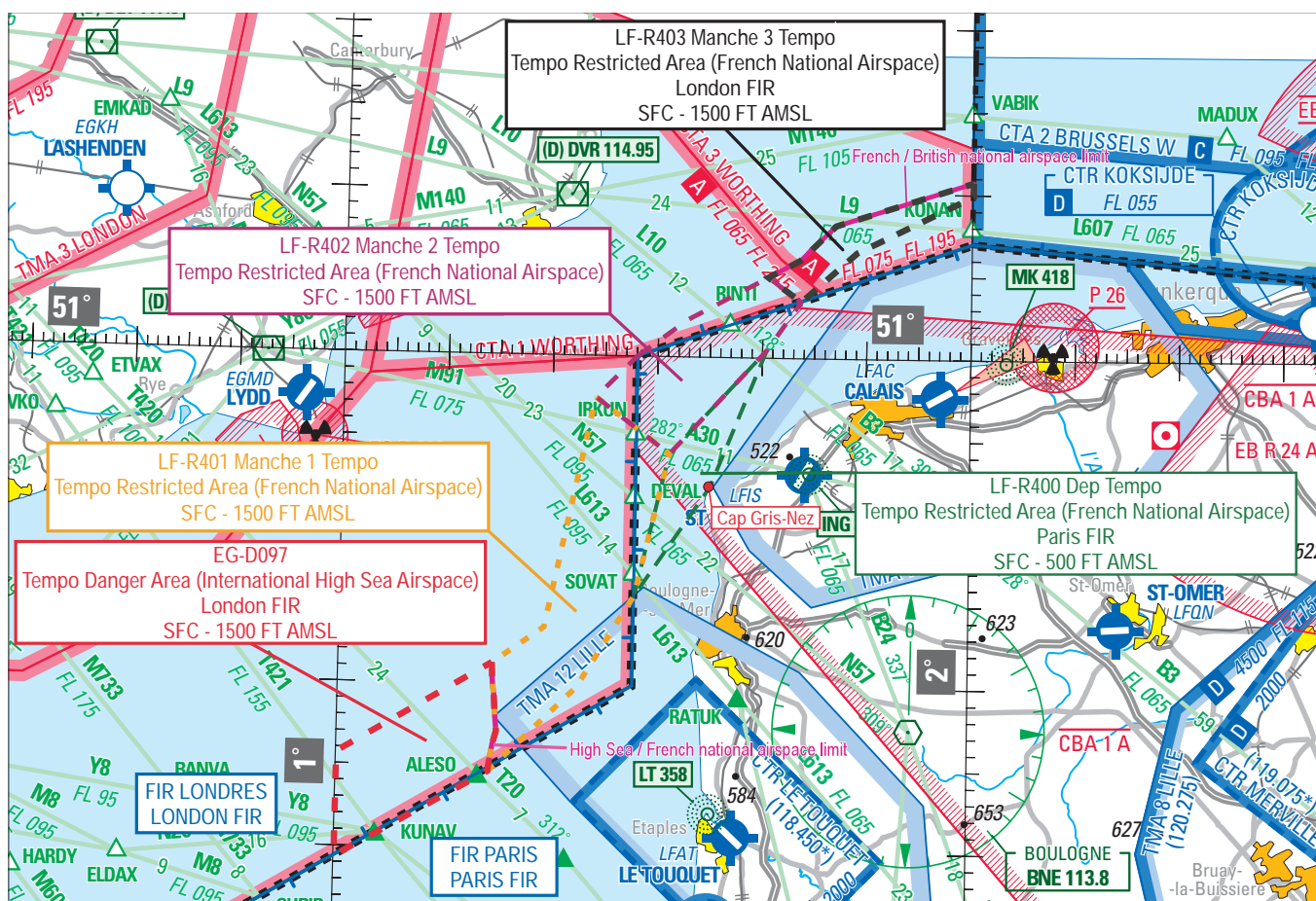
Because of a drone flying as part of maritime surveillance (control of boats air emissions), proposed by the European Maritime Safety Agency (EMSA) and operated for "Direction des Affaires Maritimes", 4 Temporary Restricted Areas (ZRT) (in French national airspace) and 1 Temporary Danger Area (over high seas) have been created over the English Channel beside Le Touquet and Calais.

These Temporary Areas are spread over both the Paris and London FIR.

The drone, which will take off from Cap Gris-Nez, is a helicopter type ACFT with a maximum weight of 200 kg.

The activation of these Temporary Areas will be possible between 14 SEP and 18 DEC 2020, on working days only (MON to FRI included, except French HOL).

The Areas in use will be activated by French NOTAM (for the 4 Tempo Restricted Areas) and a British NOTAM (for the Danger Area).



Excerpt from « France Nord » 1 / 1 000 000 SIA map 2020 edition

**ACTIVITY**

Drone flying out of sight, requiring separation of aviation activities.

The drone will fly over the English Channel, between Le Touquet and Calais.  
The drone departures, arrivals and urgent returns will be at Cap Gris-Nez.

To reduce the effects on VFR GAT users, this airspace plan will be active by parts :

- the "Southern" part (*shown in green, orange and red on the map above*) : made of Temporary Restricted Areas LF-R400 "Dep", plus LF-R401 "Manche 1" and Temporary Danger Area EG-D097, leaving the Calais / Dover route available ;
- the "Northern" part (in purple and black on the map above) : made of Temporary Restricted Areas LF-R400 "Dep", plus LF-R402 "Manche 2", and LF-R403 "Manche 3", leaving the Le Touquet (LFAT) / Lydd (EGMD) route available.

Temporary Restricted Area LF-R 400 "Dep" (*in green above*) is part of both the "Northern" and "Southern" parts, and used for departures, arrivals and urgent returns of the drone from (at) Cap Gris-Nez.

Only one of the parts (*Northern part or Southern part*) will be used on a same day.

The operating schedule (*Northern or Southern part*) will be established for a week (*from MON to FRI included, except French HOL, see item "dates and times of activity" below*).

The Temporary Areas in use will be activated by NOTAM, at the latest on the Friday before, before 1500 UTC :

- The activation of the Tempo Restricted Areas will be published by the French NOTAM office (*LFFA*)
- The activation of the Tempo Danger Area will be published by the UK NOTAM office (*EGGN*)

This airspace plan will also be published by the British AIS, see AIC Y 067/2020 available on their Web site : [www.nats-uk.ead-it.com](http://www.nats-uk.ead-it.com) (the AIC should be published on 27 AUG 2020).

**DATES AND TIMES OF ACTIVITY**

From 14 SEP to 18 DEC 2020,  
activation is possible by NOTAM,  
from MON to FRI : 0700 - 1700 UTC (SUM : - 1 HR).  
Activation is not possible on 11 NOV 2020.

**USER INFORMATION**

Area activity information provided by :  
LILLE Info : 120.275 MHz  
LONDON Info : 124.750 MHz

**TEMPORARY RESTRICTED AREAS**

**LATERAL AND VERTICAL LIMITS**

LF-R400 "DEP"	LF-R401 "Manche 1"	LF-R402 "Manche 2"	LF-R403 "Manche 3"
51°00'25"N,001°40'19"E 50°52'05"N,001°35'05"E 50°45'26"N,001°28'02"E 50°54'04"N,001°31'10"E 51°00'25"N,001°40'19"E	50°57'27"N,001°24'03"E 50°54'04"N,001°31'10"E 50°45'26"N,001°28'02"E 50°39'49"N,001°22'40"E 50°34'39"N,001°14'25"E 50°35'29"N,001°14'35"E 50°36'18"N,001°14'49"E 50°37'06"N,001°15'09"E 50°38'10"N,001°14'59"E 50°39'21"N,001°14'52"E 50°39'49"N,001°14'45"E 50°40'18"N,001°14'41"E 50°41'15"N,001°14'37"E 50°43'27"N,001°19'30"E 50°57'27"N,001°24'03"E	51°00'00"N,001°28'00"E 51°02'15"N,001°32'48"E 51°04'51"N,001°40'23"E 51°03'23"N,001°43'34"E 51°00'25"N,001°40'19"E 50°54'04"N,001°31'10"E 50°57'27"N,001°24'03"E 51°00'00"N,001°28'00"E	51°10'43"N,002°00'00"E 51°09'54"N,002°00'00"E 51°06'24"N,001°48'53"E 51°03'23"N,001°43'34"E 51°04'51"N,001°40'23"E 51°05'54"N,001°43'26"E 51°08'01"N,001°46'49"E 51°10'43"N,002°00'00"E
SFC / 500 ft AMSL	SFC / 1500 ft AMSL	SFC / 1500 ft AMSL	SFC / 1500 ft AMSL

**STATUS and SERVICES PROVIDED**

Temporary Restricted Areas (ZRT) replacing the airspace with which they overlap.

**SERVICES PROVIDED**

Flight information and alert by LILLE INFO for the portions of Temporary Restricted Areas located in PARIS FIR, and LONDON INFO for the portions of Temporary Restricted Areas located in LONDON FIR

**MANAGING AUTHORITY**

NIL

**ENTRY CONDITIONS**

**OAT / GAT :**

Compulsory avoidance, except, after contact with the drone operator (phone : +33 3 21 87 78 57), for the following ACFT :

- Dunkerque maritime helicopters, when their mission is not compatible with the avoidance of Area LF-R403 "Manche 3" ;
- ACFT conducting assistance, rescue or public safety missions, when their mission is not compatible with the avoidance of the Temporary Restricted Areas.

**TEMPORARY DANGER AREA  
LATERAL AND VERTICAL LIMITS**

**EG-D097**

50°41'15"N,001°14'37"E  
 50°40'18"N,001°14'41"E  
 50°39'49"N,001°14'45"E  
 50°39'21"N,001°14'52"E  
 50°38'10"N,001°14'59"E  
 50°37'06"N,001°15'09"E  
 50°36'18"N,001°14'49"E  
 50°35'29"N,001°14'35"E  
 50°34'39"N,001°14'25"E  
 50°29'19"N,001°00'00"E  
 50°35'40"N,001°00'00"E  
 50°41'15"N,001°14'37"E

SFC - 1500 ft AMSL

**STATUS**

Temporary Danger Area replacing the airspace with which it overlaps.

**SERVICES PROVIDED**

Flight information and alert by London Info.

**MANAGING AUTHORITY**

NIL

**ENTRY CONDITIONS**

**OAT / GAT :**

Drone flying out of sight, collision avoidance is not available.

Airspace users must be aware of the particularly dangerous nature of the activities taking place in this Temporary Danger Area. Therefore, during the activity time slots, avoiding entering this Area is highly recommended.