

Subject : Creation of 4 Temporary Restricted Areas (ZRT) and 1 Temporary Danger Area (ZDT) for a drone flying out of sight over the English channel

With effect : From 27 May to 30 August 2019

Location: FIR : Paris LFFF, London EGTT - AD : Calais LFAC, Saint Inglevert LFIS, Le Touquet LFAT, Berck sur Mer LFAM, Lydd EGMD

This AIP SUP supersedes AIP SUP 081/19.

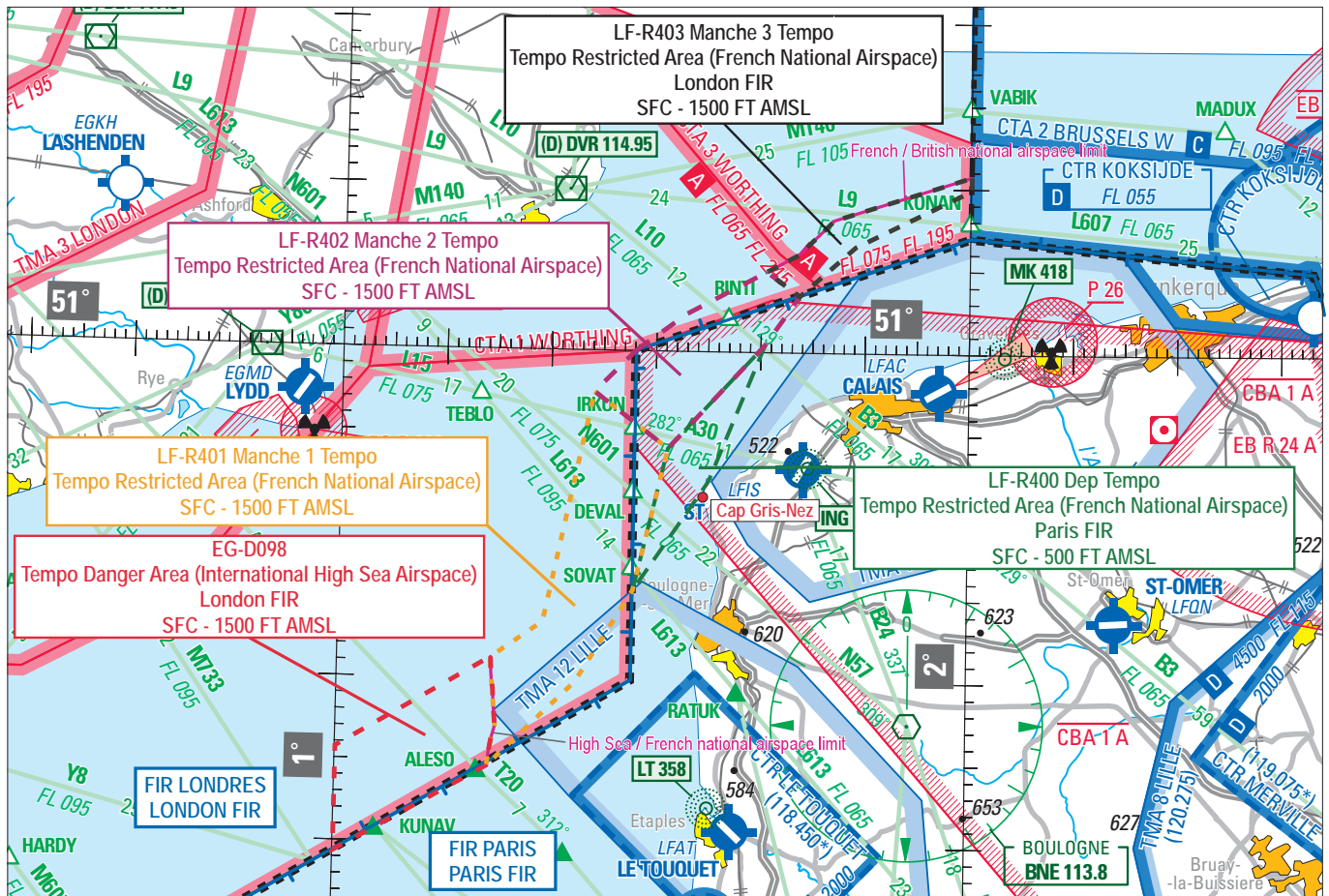
Due to maritime surveillance by a drone, proposed by the European Maritime Safety Agency (EMSA) and operated for "Direction des Affaires Maritimes", 4 Temporary Restricted Areas (ZRT) (in French national airspace) and 1 Temporary Danger Area (over high sea) have been created over the English Channel beside Le Touquet and Calais.

These Temporary Areas are spread in both the Paris and London FIR.

The drone, which will take off from Cap Gris-Nez, is a helicopter type ACFT (Skeldar V-200), with a maximum weight of 235 kg.

These Temporary Areas will be active between 2 May and 31 AUG 2019, on working days only (from MON to FRI included, except French HOL).

A NOTAM will indicate which Areas are **not active**.



Excerpt from « France Nord » 1 / 1 000 000 SIA map 2019 1st edition

ACTIVITY

Drone flying out of sight, requiring separation of aviation activities.

The drone will fly over the English Channel, between Le Touquet and Calais.

The drone departures, arrivals and urgent returns will be done at Cap Gris-Nez.

To reduce the effects on VFR GAT users, this airspace plan will be active in two parts :

- the "Southern" part (in orange and red on the map above) : comprising Temporary Danger Area EG-D098, plus Temporary Restricted Areas LF-R400 "Dep", and LF-R401 "Manche 1", leaving the Calais / Dover route available;
- the "Northern" part (in purple and black on the map above) : comprising Temporary Restricted Areas LF-R400"Dep", plus LF-R402 "Manche 2", and LF-R403 "Manche 3" leaving the Le Touquet (LFAT) / Lydd (EGMD) route available.

Temporary Restricted Area LF-R 400 "Dep" (in green above), which is used as a departure for the drone from Cap Gris-Nez is part of both the "Northern" and "Southern" parts of this airspace plan.

Only one of the parts will be used on a same day.

The operating schedule (Northern or Southern part) will be provided for a week (from MON to FRI included, except French HOL, see "dates and times of activity" below), and the inactive Temporary Areas will be deactivated by NOTAM, at the latest on the Friday before, before 1500 UTC.

An AIP SUP will also be published by the UK AIS (UK AIP SUP 016/2019).

DATES AND TIMES OF ACTIVITY

From 02 MAY to 01 JUL 2019 :

Active from MON to FRI from 0600 to 1600 UTC, except on 30 MAY, 10 JUN and 15 AUG 2019,
Deactivated by NOTAM

USERS INFORMATION

Actual time slots provided by :

LILLE Info : 120.275 MHz

LONDON Info : 124.750 MHz

TEMPORARY RESTRICTED AREAS

LATERAL AND VERTICAL LIMITS

LF-R400 "DEP"	LF-R401 "Manche 1"	LF-R402 "Manche 2"	LF-R403 "Manche 3"
51°00'25"N,001°40'19"E	50°57'27"N,001°24'03"E	51°00'00"N,001°28'00"E	51°10'43"N,002°00'00"E
50°52'05"N,001°35'05"E	50°54'04"N,001°31'10"E	51°02'15"N,001°32'48"E	51°09'54"N,002°00'00"E
50°45'26"N,001°28'02"E	50°45'26"N,001°28'02"E	51°04'51"N,001°40'23"E	51°06'24"N,001°48'53"E
50°54'04"N,001°31'10"E	50°39'49"N,001°22'40"E	51°03'23"N,001°43'34"E	51°03'23"N,001°43'34"E
51°00'25"N,001°40'19"E	50°34'39"N,001°14'25"E	51°00'25"N,001°40'19"E	51°04'51"N,001°40'23"E
	50°35'29"N,001°14'35"E	50°54'04"N,001°31'10"E	51°05'54"N,001°43'26"E
	50°36'18"N,001°14'49"E	50°57'27"N,001°24'03"E	51°08'01"N,001°46'49"E
	50°37'06"N,001°15'09"E	51°00'00"N,001°28'00"E	51°10'43"N,002°00'00"E
	50°38'10"N,001°14'59"E		
	50°39'21"N,001°14'52"E		
	50°39'49"N,001°14'45"E		
	50°40'18"N,001°14'41"E		
	50°41'15"N,001°14'37"E		
	50°43'27"N,001°19'30"E		
	50°57'27"N,001°24'03"E		
SFC / 500 ft AMSL	SFC / 1500 ft AMSL	SFC / 1500 ft AMSL	SFC / 1500 ft AMSL

STATUS and SERVICES PROVIDED

Temporary Restricted Areas (ZRT) replacing the airspace with which they overlap.

Flight information and alert by LILLE INFO for the portions of Temporary Restricted Areas located in PARIS FIR and LONDON INFO for the portions of Temporary Restricted Areas located in LONDON FIR

MANAGING AUTHORITY

NIL

ENTRY CONDITIONS

OAT / GAT :

Compulsory avoidance, except, after contact with the drone operator (phone : +33 3 21 87 78 57), for :

- Dunkerque maritime helicopters, when their mission is not compatible with the avoidance of Area LF-R403 "Manche 3" ;
- ACFT conducting assistance, rescue or public safety missions, when their mission is not compatible with the avoidance of the Temporary Restricted Areas.

**TEMPORARY DANGER AREA
LATERAL AND VERTICAL LIMITS**

EG-D098

50°41'15"N,001°14'37"E
 50°40'18"N,001°14'41"E
 50°39'49"N,001°14'45"E
 50°39'21"N,001°14'52"E
 50°38'10"N,001°14'59"E
 50°37'06"N,001°15'09"E
 50°36'18"N,001°14'49"E
 50°35'29"N,001°14'35"E
 50°34'39"N,001°14'25"E
 50°29'19"N,001°00'00"E
 50°35'40"N,001°00'00"E
 50°41'15"N,001°14'37"E

SFC - 1500 ft AMSL

STATUT and SERVICES PROVIDED

Temporary Danger Area replacing the airspace with which it overlaps.

Flight information and alert by London Info.

MANAGING AUTHORITY

NIL

ENTRY CONDITIONS

OAT / GAT :

Drone flying out of sight, collision avoidance is not provided.

Airspace users must note the particularly dangerous nature of the activities taking place in this Temporary Danger Area. Therefore, during the activity time slots, avoiding entering this Area is highly recommended.