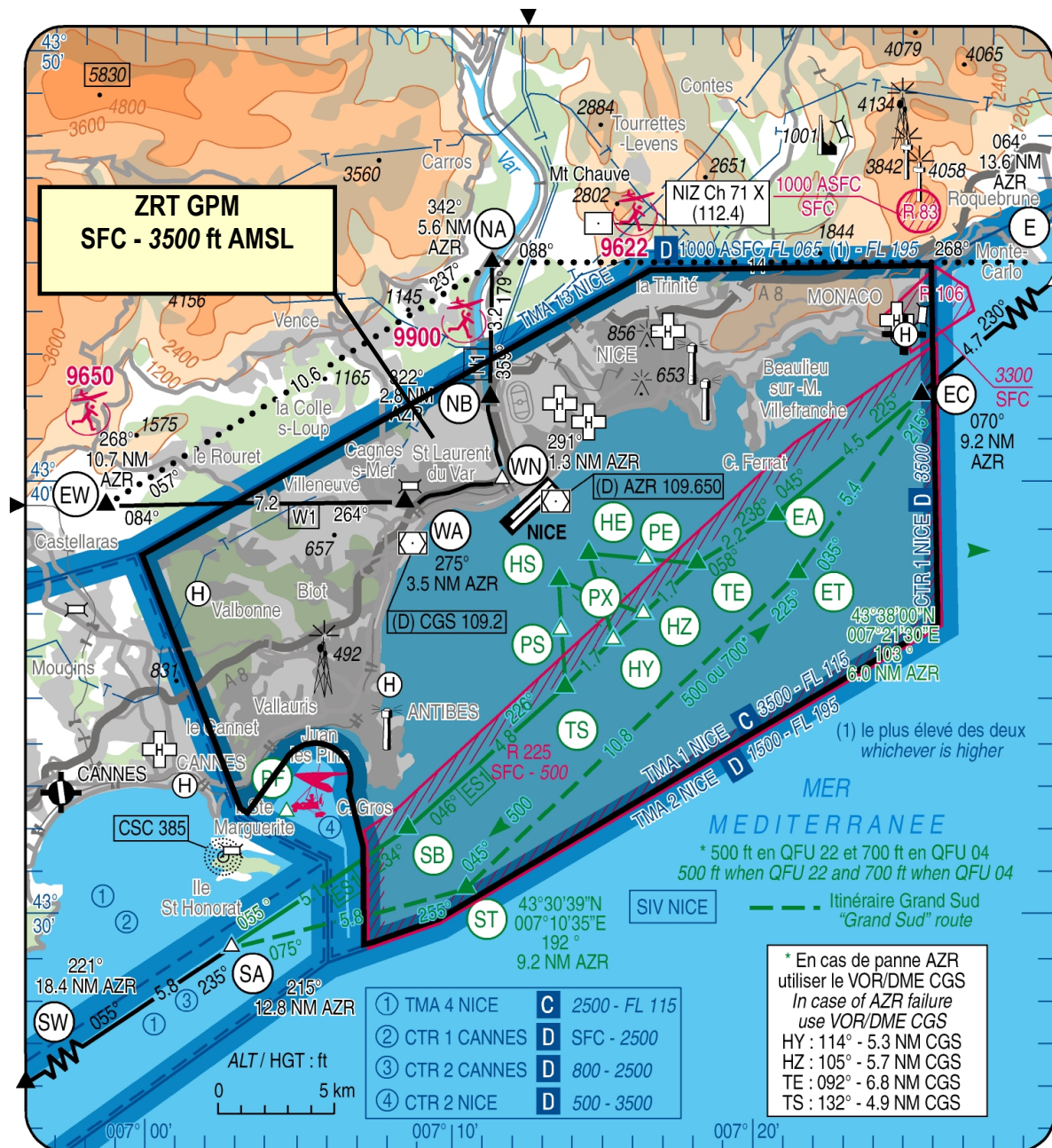


**Subject : Creation of a Temporary Restricted Area (ZRT) for the Monaco Grand Prix (GPM)**

**With effect : From 28th to 30th of May 2022**

Location: FIR : Marseille LFMM - AD : Nice Côte d'Azur LFMN, Cannes Mandelieu LFMD - Heliport : Monaco LNMN



Excerpt from chart Heliport Nice 24 MAR 2022: AD 3 LFMN APP 01

## ACTIVITY

GAT flights management by NICE CÔTE D'AZUR

## DATES AND TIMES OF ACTIVITY

ZRT active :

28 mai : 00H00 - 23H59

29 mai : 00H00 - 23H59

30 mai : 00H00 – 12H00

## USER INFORMATION

Nice INFO : 120.850 MHz,  
122.925 MHzNice TWR : 122.375 MHz  
123.150 MHz

Cannes TWR : 118.625 MHz

Lerins TWR : 120.780 MHz

Monaco TWR : 124.000 MHz

## MANAGING AUTHORITY

Nice Côte d'Azur TWR

## STATUS

Temporary Restricted Area (ZRT) coexisting with the airspace with which it overlaps.

## ENTRY CONDITIONS

IFR GAT: upon authorisation. Follow NICE TWR instructions.

VFR GAT and OAT: compulsory avoidance during activity except for :

- aircraft conducting assistance, rescue, customs, police or public safety missions when their mission is not compatible with the ZRT avoidance;
- helicopters with an authorization of movement from Nice Civil Aviation Authorities (DGAC) (see item "Relevant authorities contact details" below), if they are equipped with a mode S transponder;
- helicopters based at NICE COTE D'AZUR or MONACO using the route mentioned in the « ADDITIONAL PROVISIONS » below.

## SERVICES PROVIDED

Within ZRT GPM, the ATS services provided are identical to those provided in the airspace with which this ZRT coexists.

## LATERAL AND VERTICAL LIMITS

## ZRT GPM

Lateral Limits :

Lateral limits identical to those of Part 1 of NICE CTR (see France AIP, part AD 2 LFMN AD 2.17) excluding Restricted Area LF-R 106 MONACO when this area is active

Vertical Limits :

SFC/3500FT AMSL.

## SPECIAL PROVISIONS

## Helicopters

## Reminder :

- In the ZRT, the minimal weather conditions for using helicopter routes departing from or going to NICE COTE D'AZUR aerodrome FATOs are :

	Visibility	Ceiling
Day	5 km	1500 ft
Night	8 km	1500 ft

- Special VFR : helicopters may get a special VFR clearance on routes between Nice and Monaco if :
  - Visibility > 5 km
  - Ceiling > 1000 ft.

Creation of a helicopter transit route called « Grand Sud » :

- defined between MONACO and CANNES using the following points : EC - ET (2 NM South East of Point EA) - ST (2 NM South East of Point SB) – SA ;
- for use **at daytime**
- if RWY 04 in use : at the altitude of 500 ft when flying westward and 700 ft eastward
- if RWY 22 in use : at the altitude of 500 ft both ways.

Contact FREQ for helicopters using the "Grand Sud" route : 123.150 MHz

Air traffic flow regulation measures may be implemented.

Airspace users are invited to consult additional information that may be published by the aeronautical information services, especially about the restrictions of use at Nice Côte d'Azur and Cannes airports.

## RELEVANT AUTHORITIES CONTACT DETAILS

NICE Côte d'Azur Airport  
BP 3036  
06201 NICE CEDEX 3  
Phone : +33(0)4 93 17 21 18

For movement authorization, contact NICE Civil Aviation Authority :  
Fax : +33(0) 4 93 17 23 22  
e-mail : [nice-caz-agta-ld@aviation-civile.gouv.fr](mailto:nice-caz-agta-ld@aviation-civile.gouv.fr)