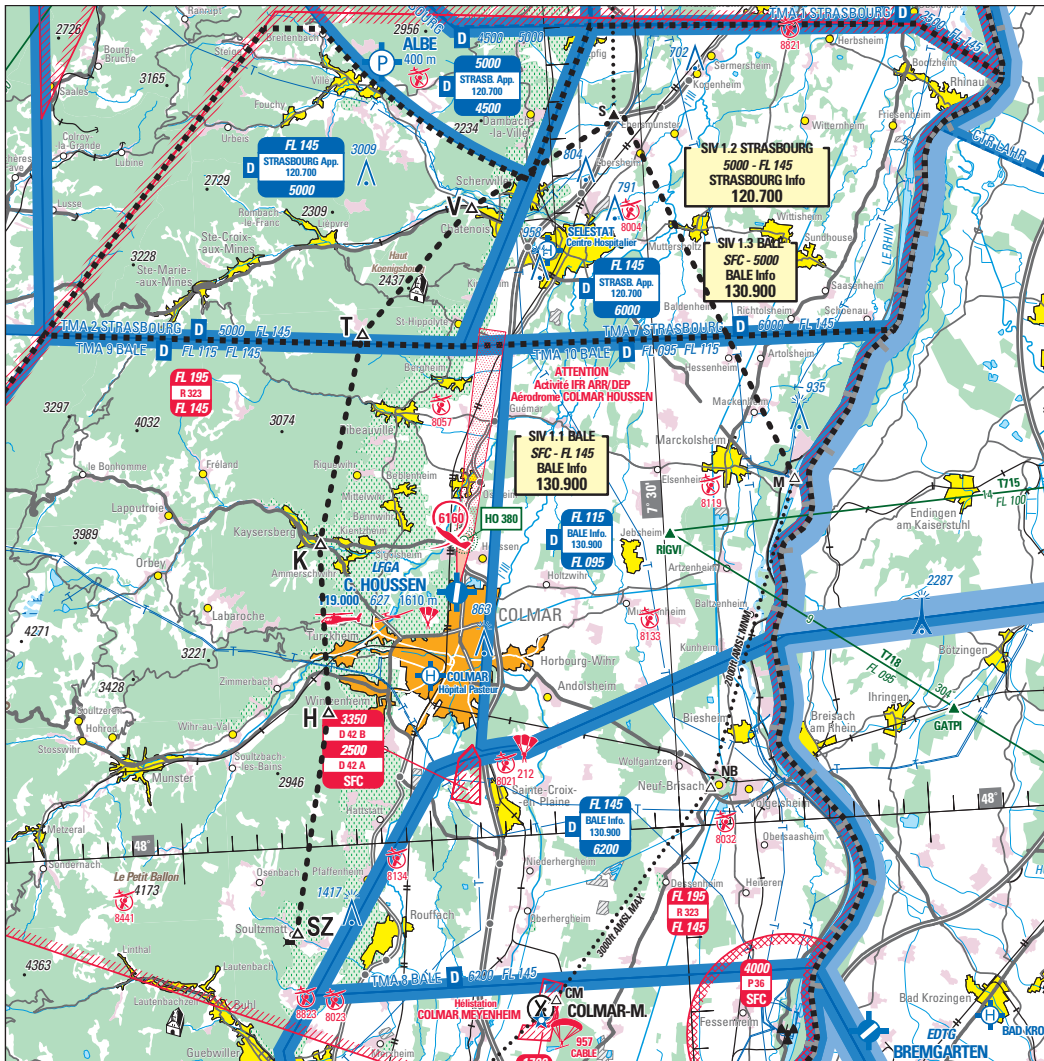


Subject : Creation of a second daytime VFR route over Alsace Plain (Reims FIR LFEE)
With effect : From 16 April 2020 to 21 April 2021



From 1 / 250 000 Strasbourg Alsace Lorraine SIA map 2020 edition

DESCRIPTION
<p>As an experiment :</p> <p>A second recommended daytime VFR transit route, for use in both directions, has been created over Alsace Plain in order to ensure separation between RWY 19 IFR procedures at Colmar Houssem AD (LFGA) and ACFT flying under VFR around Haut-Koenigsbourg Castle.</p>
DATES AND TIMES OF ACTIVITY
<p>From 16 APR 2020 to 21 APR 2021 : HJ</p>
USER INFORMATION
<p>BALE INFO : 130.900 MHz COLMAR TWR : 119.000 MHz</p>
ATS CONTACT
<p>Segments M-S-V-T and H-SZ : BALE INFO 130.900 MHz</p> <p>Segment T-K-H : COLMAR TWR 119.000 MHz</p>

LATERAL AND VERTICAL LIMITS

Recommended daytime VFR transit route for use in both directions.

- M : Marckolsheim Bridge over Rhin river 48° 09' 15"N, 007° 35' 22"E,
- S : Sélestat Nord interchange 48° 19' 16"N, 007° 29' 18"E,
- V : Val de Villé Roundabout 48° 16' 58"N, 007° 22' 57"E,
- T : Tannenkirch 48° 13' 43"N, 007° 18' 19"E,
- K : East of Kaysersberg 48° 08' 10"N, 007° 16' 09"E,
- H : Hohlandsbourg Castle 48° 03' 36"N, 007° 16' 09"E,
- SZ : Soultzmatt 47° 57' 39"N, 007° 14' 23"E,

3000FT AMSL MAX between M and S
2800FT AMSL MAX between S and V

ADDITIONAL INFORMATION

Users must be aware :

- 1 – there are IFR flying on the LFGA RWY 01/19 axis.
- 2 – heavy VFR traffic is possible on this route.
- 3 – gliders may fly in the vicinity of this route.
- 4 – there are special activities and Particular airspace.