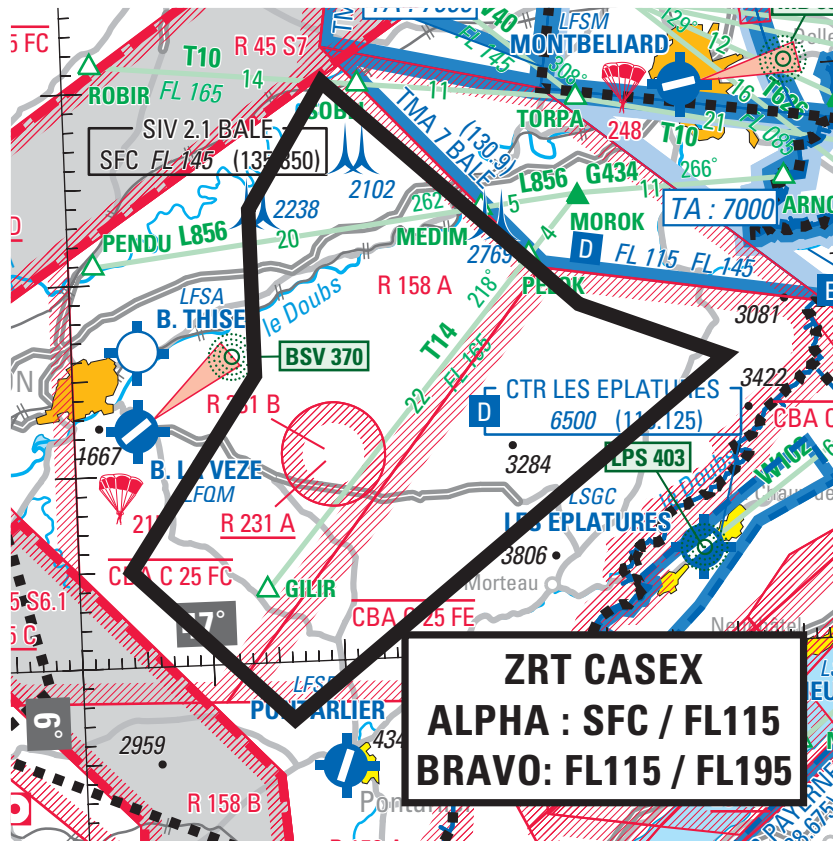


Subject : Creation of 2 Temporary Restricted Areas (ZRT) for Exercise CASEX 19-02 over Besançon (Reims FIR LFEF)

With effect : From 15 to 26 July 2019

ZRT CASEX A and B



ACTIVITY

Regional exercise involving numerous French and foreign ACFT simulating target attacks. The missions are operated at very low, low and medium altitude and require the implementation of Temporary Restricted Areas (ZRT) over Besançon.

DATES AND TIMES OF ACTIVITY

ZRT CASEX A and B can be activated :

- MON 15 and 22 JUL 2019 : 0600 - 2000
- TUE 16 and 23 JUL 2019 : 0600 - 2300
- WED 17 and 24 JUL 2019 : 0600 - 2000
- THU 18 and 25 JUL 2019 : 0600 - 2300
- FRI 19 and 26 JUL 2019 : 0600 - 1400

USER INFORMATION

ZRT CASEX A and B:

- Cinq Mars la Pile MIL CTL and Reporting Centre (CRC), call sign : RAKI (or back-up CRC) : 119.700 MHz
- LUXEUIL APP : 129.925 MHz
- BALE INFO : 130.900 MHz - 135.850 MHz
- REIMS CTL : 124.950 MHz

MANAGING AUTHORITY

ZRT CASEX A and B:
Cinq Mars la Pile MIL CTL and Reporting Centre (CRC) (or in case of technical unavailability, the back-up CRC).

STATUS

ZRT CASEX A and B: Tempo Restricted Areas (ZRT) coexisting with the controlled airspace with which they overlap and replacing the portions of Tempo Restricted Areas with which they overlap.

ENTRY CONDITIONS

GAT / OAT, compulsory avoidance except for :

- aircraft involved in the exercise,
- aircraft conducting saving, rescue, customs, police or public safety missions, when the avoidance is not compatible with these missions, entry is possible upon authorization from the Managing Authority,
- aircraft with authorization from the Managing Authority

SERVICES PROVIDED

OAT : control, flight information and alerting are provided within the ZRTs by the managing authority.

GAT : within the portions of ZRT coexisting with controlled airspace, the usual ATC units provide, to users cleared into the ZRT, the Air Traffic Services in accordance with the class of this controlled airspace.

LATERAL AND VERTICAL LIMITS

ZRT CASEX ALPHA and ZRT CASEX BRAVO :

Lateral limits :

47°30'10"N 006°20'00"E
 47°18'00"N 006°39'00"E
 47°15'00"N 006°50'00"E
 46°57'00"N 006°16'00"E
 47°05'00"N 006°04'00"E
 47°15'00"N 006°14'00"E
 47°23'40"N 006°14'00"E
 47°30'10"N 006°20'00"E

Vertical limits :

ZRT CASEX ALPHA : SFC / FL 115
 ZRT CASEX BRAVO : FL 115 / FL 195

ADDITIONAL PROVISIONS

Additional activities are scheduled at the following hours in the following areas :

EU-CBA C 25 FC and EU-CBA C 25 FE, and LF-R 158 A and B Mirage 2000 NE :

- MON 15 and 22 JUL 2019 : 0600 - 2000
- TUE 16 and 23 JUL 2019 : 0600 - 2300
- WED 17 and 24 JUL 2019 : 0600 - 2000
- THU 18 and 25 JUL 2019 : 0600 - 2300
- FRI 19 and 26 JUL 2019 : 0600 - 1400

The activation slots of the manageable areas are notified on the day before, before 12h00 by the CDPGE (Defense booking and planning management cell)

Use of AWY L856, T14 and the segment of AWY T10 between ROBIR and TORPA will be subject to coordination with the managing authority during the ZRT activation.

RELEVANT AUTHORITIES CONTACT DETAILS

Before the exercise :

« Commandement de la Défense Aérienne et des Opérations Aériennes » « SCAA » (Sous-chefferie Activités aériennes)
 Phone : +33(0)4.69.84.47.99 or +33(0)4.69.84.47.98
 PNIA : 811.942.4799 (98)

« Centre de Formation à l'Appui Aérien 01.451
 BA 133
 CS 40 334
 54201 Toul CEDEX
 Phone : +33(0)3.83.52.65.41
 PNIA : 811.133.1083 »

During the exercise :

Exercise manager / CFAA operation unit :
 Phone : +33(0)6.64.48.96.46 - +33(0)6.64.48.49.53

Cinq-Mars-La Pile CRC (Control and Reporting Centre)
 Phone : +33(0)2.47.96.28.63 - +33(0)2.47.96.30.00

back-up CRC :
 Lyon-Mont-Verdun CRC
 Phone : +33(0)4.26.72.83.99 or +33(0)4.81.18.33.27