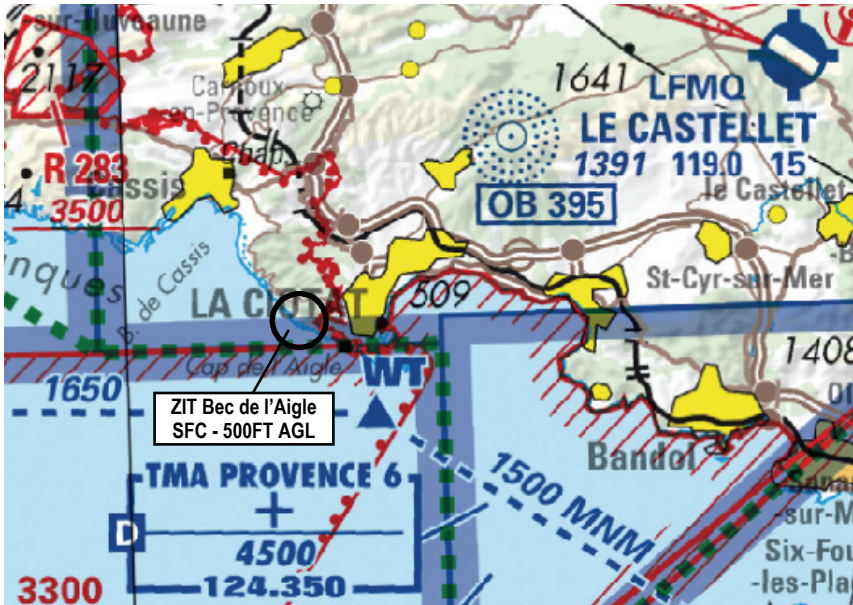


Subject : Creation of a Temporary Prohibited Area (ZIT) Bec de l'Aigle over the city of La Ciotat (FIR : Marseille LFMM)

With effect : From 23 May to 06 November 2019



Excerpt from 1 / 500 000 IGN map 2019 edition

ACTIVITY
Low altitude flying prohibited over specific Defence installations
DATES AND TIMES OF ACTIVITY
H24
MANAGING AUTHORITY
CECMED
STATUS
Temporary Prohibited Area (ZIT) coexisting with the airspace with which it overlaps.
SERVICES PROVIDED
Information and alert
LATERAL AND VERTICAL LIMITS
Circle radius 0.5 NM centred at 43°10'29"N 005°34'26"E SFC - 500 ft AGL

ENTRY CONDITIONS

GAT/OAT : entry is prohibited, including for remotely piloted ACFT;

entry is possible for :

- ACFT conducting assistance, rescue or public safety missions, when their mission is not compatible with the avoidance of the ZIT;
- Defence ACFT, including State remotely piloted ACFT.