

Subject : Creation of airspaces (Temporary Restricted Areas (ZRT), CTR, TMA) for the 24 Hours of Le Mans sports car race 2017

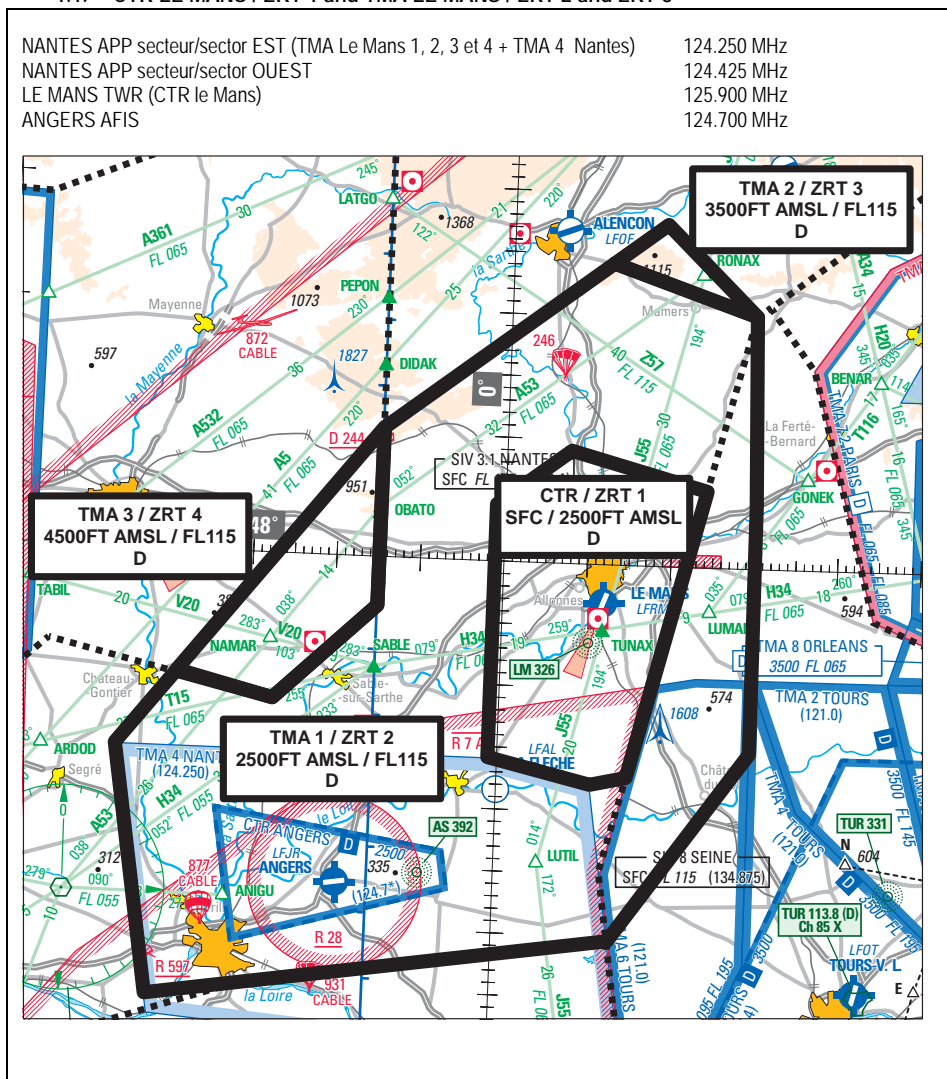
With effect: From 15 to 19 June 2017

Location: Paris FIR LFFF, Brest FIR LFRR and AD: Le Mans Arnage LFRM, Angers Marcé LFJR

As part of the 85th "24 Hours of Le Mans" sports car race, an airspace plan will be implemented. It comprises a temporary CTR and 3 temporary TMA LE MANS, coupled with 5 Temporary Restricted Areas (ZRT). Their characteristics, conditions for use of the airspace and the consequences on the use of Le Mans Arnage AD (LFRM) and Angers Marcé (LFJR), and their air activity are described below.

1 AIRSPACE PLAN

1.1. CTR LE MANS / ZRT 1 and TMA LE MANS / ZRT 2 and ZRT 3



DATES AND TIMES OF ACTIVITY of CTR LE MANS / ZRT 1 and TMA 1, 2 and 3 LE MANS / ZRT 2, ZRT 3 and ZRT 4	
15	: 1200 – 1800
16 -17	: 0600 – 1800
18	: 0600 – 1900
19	: 0600 – 1000

STATUS and SERVICES PROVIDED

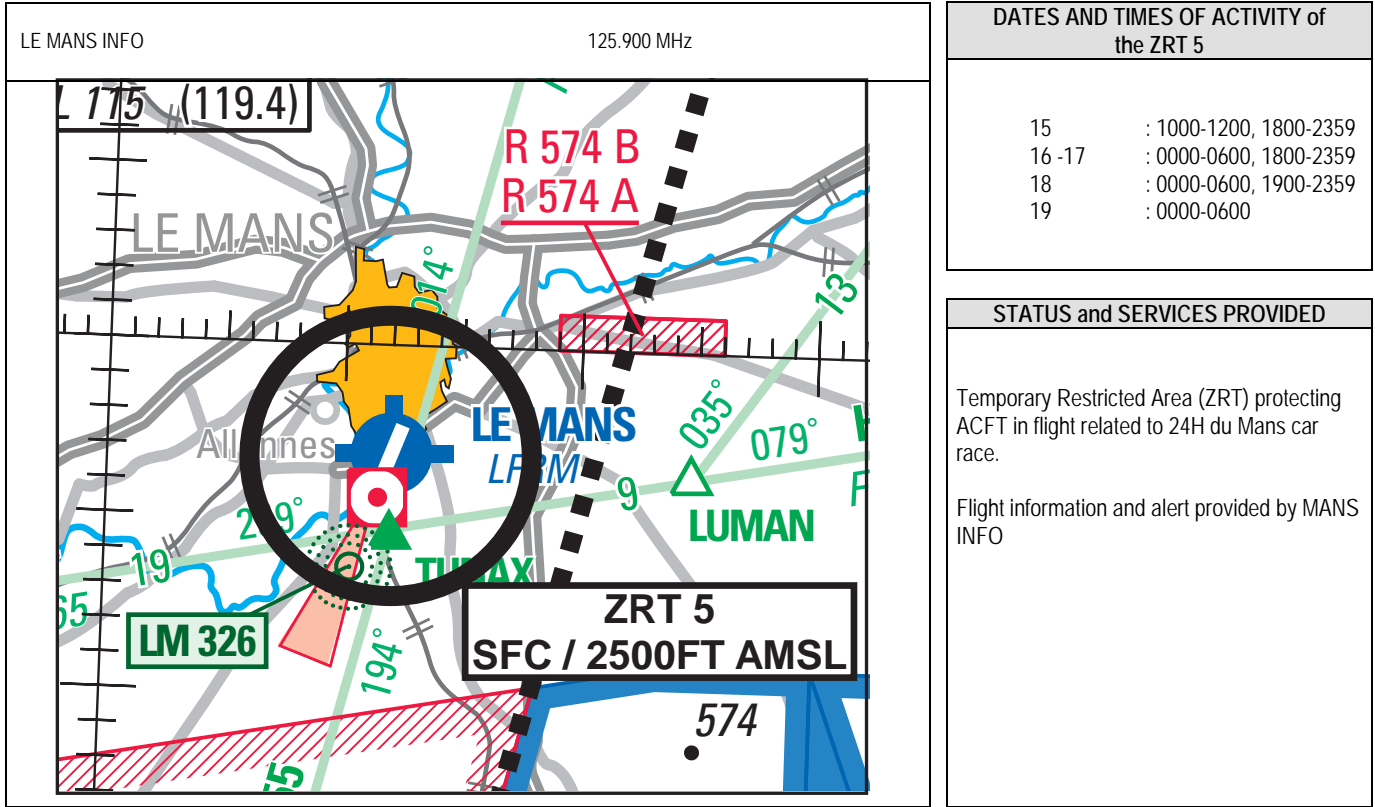
When they are active:

- CTR LE MANS coexists with ZRT 1
- TMA 1 LE MANS coexists with ZRT 2
- TMA 2 LE MANS coexists with ZRT 3
- TMA 3 LE MANS coexists with ZRT 4
- CTR LE MANS, TMA LE MANS 1, 2 and 3, ZRT 1, ZRT 2, ZRT 3 and ZRT 4 replace the portions of airspace with which they overlap (TMA 4 NANTES, TMA 6 TOURS, ATS routes H 34, J 55, A 53, V 20 and T 15, Restricted Areas LF-R 7 A, and LF-R 574 A and B).
- CTR LE MANS and TMA LE MANS 1, 2 and 3 are class D airspace.

	CTR LE MANS / ZRT1	TMA1 LE MANS / ZRT2
Lateral limits	48°09'01.00" N, 000°07'38.00" E 48°06'05.00" N, 000°24'03.00" E 47°42'48.00" N, 000°15'24.00" E 47°42'09.00" N, 000°11'07.00" E 47°44'05.00" N, 000°01'09.00" W 48°04'30.00" N, 000°01'09.00" W 48°09'01.00" N, 000°07'38.00" E	48°05'00.00" N, 000°30'00.00" E 47°45'00.00" N, 000°30'00.00" E 47°29'35.00" N, 000°13'49.00" E 47°23'57.46" N, 000°40'45.63" W 47°44'03.00" N, 000°45'36.00" W 47°50'00.35" N, 000°38'43.06" W 47°48'12.00" N, 000°27'05.00" W 47°55'59.00" N, 000°15'00.00" W 48°10'20.00" N, 000°14'58.00" W 48°24'13.87" N, 000°11'57.71" E 48°20'17.00" N, 000°29'25.00" E 48°05'00.00" N, 000°30'00.00" E
Vertical limits	SFC / 2500FT AMSL	2500FT AMSL / FL115
Managing Authorities	LE MANS TWR 125.900 MHz	NANTES APP secteur Est/East sector 124.250 MHz
Users information	LE MANS TWR 125.900 MHz	NANTES INFO 119.400 MHz SEINE INFO 134.875 MHz PARIS INFO 129.625 MHz BREST INFO 134.200 MHz ANGERS AFIS 124.700 MHz RENNES INFO 134.000 MHz
Entry conditions	<p>CTR LE MANS / ZRT 1 GAT / MIL air traffic : compulsory avoidance except for the:</p> <ul style="list-style-type: none"> • ACFT departing from or arriving at LE MANS ; • Helicopters cleared by ATC services from LE MANS around the car race track ; • ACFT conducting assistance, rescue or public safety missions, when their mission does not allow the avoidance and after authorisation from the applicable Managing Authority. <p>TMA 1 LE MANS / ZRT 2 GAT IFR : upon clearance from NANTES APP; GAT VFR / MIL : compulsory avoidance except for the:</p> <ul style="list-style-type: none"> • ACFT departing from or arriving at LE MANS ; • ACFT in TACAN procedure, in contact with TOURS APP and flying into TMA 1 LE MANS (this latter replacing TMA 6 TOURS portion limits) ; • ACFT conducting assistance, rescue or public safety missions, when their mission does not allow the avoidance and after authorisation from the applicable Managing Authority. 	

	TMA 2 LE MANS / ZRT 3	TMA 3 LE MANS / ZRT 4
Lateral limits	48°24'13.87" N, 000°11'57.71" E 48°20'17.00" N, 000°29'25.00" E 48°27'29.00" N, 000°18'20.00" E 48°24'13.87" N, 000°11'57.71" E	48°10'20.00" N, 000°15'00.00" W 47°55'59.00" N, 000°15'00.00" W 47°48'12.00" N, 000°27'05.00" W 47°50'07.04" N, 000°38'37.97" W 48°10'20.00" N, 000°15'00.00" W
Vertical limits	3500FT AMSL / FL115	4500FT AMSL / FL115
Managing Authorities	NANTES APP secteur Est/East sector 124.250 MHz	NANTES APP secteur Est/East sector 124.250 MHz
Users information	NANTES INFO 119.400 MHz SEINE INFO 134.875 MHz PARIS INFO 129.625 MHz BREST INFO 134.200 MHz ANGERS AFIS 124.700 MHz RENNES INFO 134.000 MHz	NANTES INFO 119.400 MHz SEINE INFO 134.875 MHz PARIS INFO 129.625 MHz BREST INFO 134.200 MHz ANGERS AFIS 124.700 MHz RENNES INFO 134.000 MHz
Entry conditions	<p>TMA 2 LE MANS / ZRT 3 et TMA3 LE MANS / ZRT 4 GAT IFR : upon clearance from NANTES APP; GAT VFR / MIL : compulsory avoidance except for the:</p> <ul style="list-style-type: none"> • ACFT departing from or arriving at LE MANS ; • ACFT conducting assistance, rescue or public safety missions, when their mission does not allow the avoidance and after authorisation from the applicable Managing Authority. 	

1.2. ZRT 5 LE MANS CAR-RACE TRACK



DATES AND TIMES OF ACTIVITY of the ZRT 5	
15	: 1000-1200, 1800-2359
16 -17	: 0000-0600, 1800-2359
18	: 0000-0600, 1900-2359
19	: 0000-0600

STATUS and SERVICES PROVIDED
Temporary Restricted Area (ZRT) protecting ACFT in flight related to 24H du Mans car race.
Flight information and alert provided by MANS INFO

ZRT 5	
Lateral limits	Circle radius 4NM centred on the ARP LFRM – PSN : 47°56'55"N, 000°12'06"E
Vertical limits	SFC / 2500FT AMSL
Managing authority	LE MANS INFO
Users information	LE MANS INFO : 125.900 MHz NANTES INFO : 119.400 MHz
Entry conditions	MIL air traffic/GAT : radio contact mandatory with LE MANS INFO

1.3. ADDITIONAL ACTIVITIES

Restricted Areas LF-R 574 A and B AUVOURS are not activated when ZRT 1, 2, 3 and 4 are active. Users' attention is drawn to the fact that there is a lot of helicopter activity around the car-race track in the East of the aerodrome.

2. USE OF THE AERODROME OF LE MANS ARNAGE (LFRM)

From 15 June, 1200 to 19 June, 1000, the use of LE MANS AD is reserved for authorized traffic only. LE MANS AD is closed to all traffic outside of the ATS SKED except for authorized helicopters. If flow measures have been established, the ATFM slots override the local provisions.

2.1. GENERALITIES

2.1.1. Special instructions relating to all flights

Y, Z and AFIL flight plans bound for LE MANS ARNAGE and ANGERS MARCE AD are not authorized. Training flights on LE MANS are forbidden. LE MANS ARNAGE AD cannot be chosen as alternate AD on flight plans. Helicopters must comply with the aeroplanes procedures.

2.1.2. Restrictions on flights

From 15 June, 1200 until 19 June, 1000 UTC :

- gliders and ULM are forbidden in LE MANS,
- local flights and AD circling in LE MANS are subject to prior authorisation from ATS and filed flight plan intention to the Reporting Office,
- grass parking stands may be suggested as a parking in LE MANS to the captain.

For the nights from 16th to 17th June, from 17th to 18th June and from 18th to 19th June, **STAP (Parameter automatic transmission system) / PCL of Le Mans is not activated.**

On 17th June, between 0800 and 1200, **priority is given to flights arriving to Le Mans.**

On 18th June starting from 1000, in Le Mans, **neither filed flight plan nor change in the flight plan will be admitted.**

On 18th June, **arrivals in Le Mans are suspended from 1200 to 1700.**

Intense helicopter activity around the car-race track located on the east side of Le Mans AD.

2.1.3. Restrictions on activities

The following activities are all suspended when the ZRT are activated:

- Parachuting activities No 220 LE MANS ARNAGE AD, No 203 LA FLECHE THOREE LES PINS AD and No 246 PIACE ;
- Winch activity No 887 LE MANS AD ;
- Model ACFT No 8390 of Le Mans.

2.1.4. Aerodrome Circling

Aerodrome circling to the right for Runway 20 and to the left for Runway 02.

2.1.5. Ground taxiing

Upon control instructions, and no later than RWY cleared, pilots contact LE MANS SOL (*LE MANS GROUND*).

They follow the arrows and clearances to get to stands T, B, J, M and H1 for helicopters.

Helicopter stand H2 is reserved.

2.1.6. Formalities upon arrival

As from 16 June 0600, pilots must present themselves to the reporting office upon arrival, after the customs, passport controls, police and airport formalities, as soon as they arrive, to communicate to ATC services their estimated date and time of departure.

No departure will be granted on 18 June to the crews who did not take this step.

2.1.7. Formalities before departure

The pilots must anticipate the time needed for the safety-related departure formalities.

2.1.8. Acces restrictions

All flights must obtain, before 15 June at 1200, the agreement from the "CCI" (Chamber of Commerce and Industry) of Le Mans (Phone: +33(0)243 840 043/Fax: +33(0)243 849 911 or by e-mail aeroport@lemans.cci.fr) for arrivals and parking expected on 17 and 18 June.

2.2. ARRIVAL AND DEPARTURE PROCEDURES FOR GAT VFR

2.2.1. Weather minima

Inbound and outbound aircraft: VIS 3000 m, ceiling: 800ft.

Helicopters: VIS 800 m, ceiling: 500ft

2.2.2. REPORTING POINTS BEFORE THE ENTRANCE AND EXIT IN / FROM ALL CTR 1 AND ZRT 1

See Appendix I

2.2.3. Departure procedures

The first contact must be made on the PREFLIGHT frequency in order to obtain the start up clearance.

For Sunday 18 June, the flight plans must be filed at the latest on this day, before 1000.

2.2.4. Arrival procedures

Pilots listen to Le MANS TWR as soon as possible and at least 5 minutes before entering into the CTR1/ZRT1 in order to obtain weather information and RWY in use.

2.3. ARRIVAL AND DEPARTURE PROCEDURES FOR GAT IFR

It is likely that Air Traffic Flow Management measures (ATFM) concerning the Le Mans IFR arrivals and departures will be implemented.

2.3.1. Departure procedures

Pilots give to the reporting office their ETD upon arrival. Effective departure remains subject to ATFM measures that may be in force.

The PREFLIGHT frequency shall be used to obtain the CTOT, and to request start-up.

2.3.2. Arrival procedures

At first radio contact with NANTES APP, the pilots must announce whether they are able or not to perform a RNAV/GNSS APCH procedure. The instrument approach procedures issued in AIP FRANCE remain valid during the applicable period, **except for the following modifications:**

- Visual Manoeuvring without prescribed track (circling) which must be performed West of the facilities, as overflight of the race track located East of the AD is prohibited.
- RWY 02 approach:
 - in case of vectoring procedure, pilots must expect end of vectoring on RWY axis at 11 NM and 3000ft QNH.
 - the end of vectoring will be followed by the final approach clearance (implicit clearance for descent to 2000ft QNH)
- Missed approach:
 - in case of missed approach, regardless the procedure and the QFU, climb up to 3000ft QNH in the axis and follow the ATC instructions (*vectoring for a new approach*).
- in case of holding, the following holding pattern may be used :
 - LM : 326 KHz, inbound QDM 021°, outbound time 1 minute. Minimal level 3000ft QNH / maximal level FL110
 - MAPEB : inbound QDM 111°, outbound time 1 minute. Minimal level 3000ft QNH / maximal level FL110
 - AS : 392 KHz, inbound QDM 082°, outbound time 1 minute. Minimal level 3000ft QNH / maximal level 6000ft QNH

2.4. Operating hours (UTC)

ATS Service:	on 15 June :	1200-1800	Reporting office :	on 16 June :	0600-1800
	on 16 and 17 June :	0600-1800		on 17 and 18 June :	0600-1800
	on 18 June :	0600-1900		on 19 June :	0600-1000
	on 19 June :	0600-1000			

The Customs and Police, Refuelling, rescue and fire fighting ("RFFS") (level 5) SKD are identical to those of the ATS Service.

3. USE of THE AERODROME ANGERS MARCE (LFJR)

From 15 June 1200 UTC to 19 June 2017 1000 UTC :

- Angers AD (LFJR) cannot be chosen as alternate AD in flight plans,
- Aerobatics No 6363 « Dural » is suspended during the ZRT 2 activation,
- IFR training flights on Angers AD (LFJR) are forbidden,
- Filed flight plans such as « Y, Z », or filed in flight (AFIL) outbound for Angers AD (LFJR) are not allowed.

4. FREQUENCES ATS

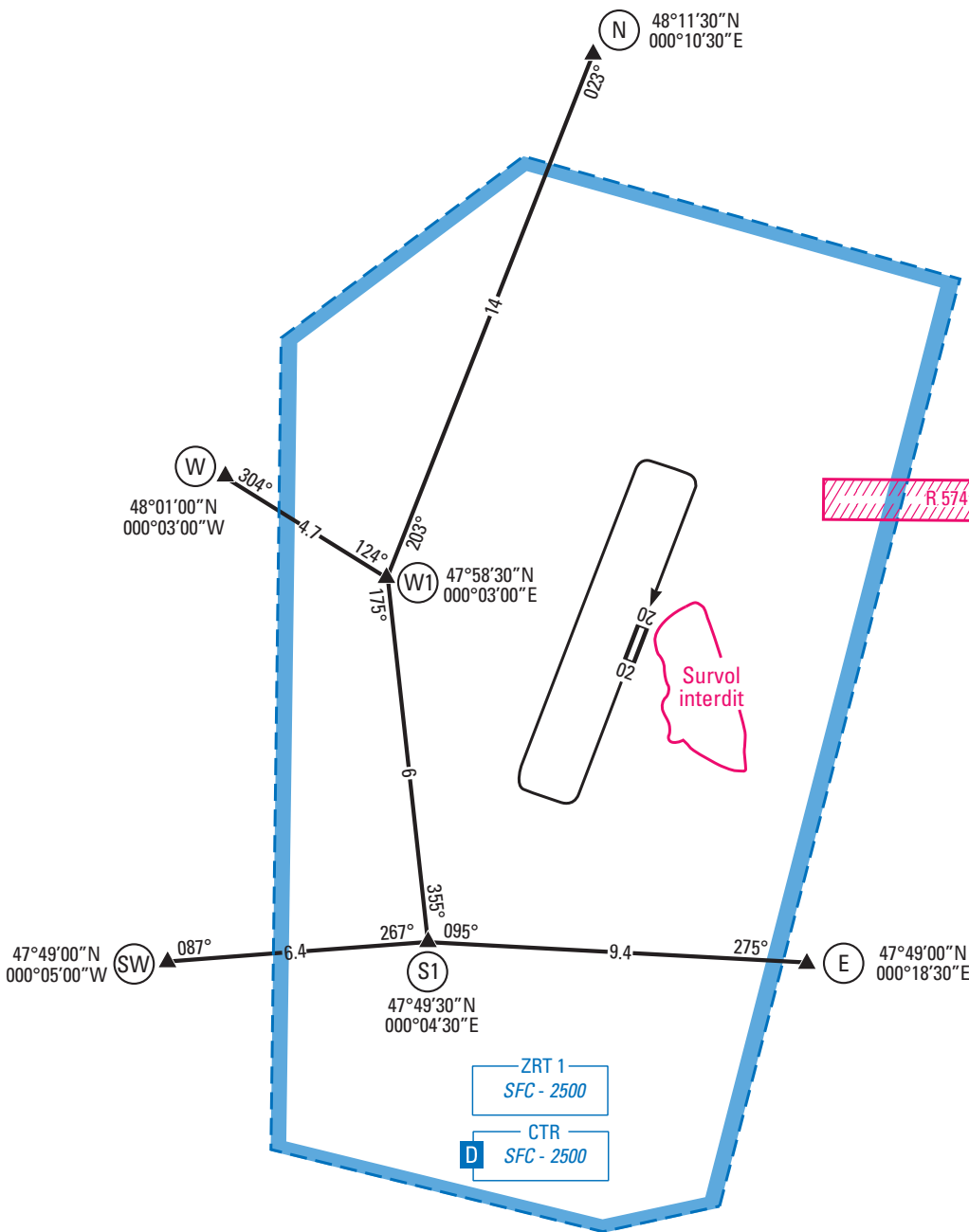
NANTES APP secteur Ouest/ <i>West sector</i>	124.425 MHz	NANTES APP secteur Est/ <i>East sector</i>	124.250 MHz
NANTES INFO	119.400 MHz	LE MANS TWR	125.900 MHz
LE MANS SOL/ <i>GROUND</i>	123.250 MHz	LE MANS PRÉVOL/ <i>PREFLIGHT</i>	127.350 MHz
PARIS INFO	129.625 MHz	BREST INFO	134.200 MHz
SEINE INFO	134.875 MHz	ANGERS AFIS	124.700 MHz
RENNES INFO	134.000 MHz		

APPENDIX I
Reporting point before the entrance and exit to/from all the CTR and ZRT 1

REPORTING POINT BEFORE THE ENTRANCE AND EXIT TO/FROM ALL THE CTR AND ZRT 1

- N : Interchange of Beaumont onto Sarthe (A28 Alençon- Le Mans).
- W : Intersection Motorway Laval/Chartres and the national road « RN 157 ».
- W1 : Interchange Le Mans Sud, at the edge of motorway « A 11 ».
- SW : Malicorne Village.
- S1 : Cérans-Foulletourte Village on national road « RN 23 ».
- E : Intersection motorway Le Mans-Tours with the national road « RN138 » (on the east side of Ecommoy city).

LE MANS TWR 125.900 MHz
LE MANS Prévol/*Preflight* 127.350 MHz
LE MANS Sol/*Ground* 123.250 MHz



Valable / Available
du /from 15 JUN 2017 à / at 12h00 UTC
au / to 19 JUN 2017 à / at 10h00 UTC

