



Subject : Evaluation of an IFR route for helicopters flying between hospitals of the Alsace plain.
THIS AIRAC AIP SUP REPLACES AND CANCELS AIRAC AIP SUP 017/21

With effect : From 09 September 2021 to 20 April 2022

Location : FIR : Reims LFEE

DESCRIPTION :

This AIP SUP describes the evaluation conditions of an helicopter IFR route for operators conducting flights between hospitals of Alsace plain.

This IFR route will allow connection between the Mulhouse, Colmar and Strasbourg hospitals under low visibility conditions.

HOURS :

every day H24

SERVICES PROVIDED :

Flight information and alert; ATC in controlled airspace.

EVALUATION OPERATING CONDITIONS :

This evaluation is reserved for operators conducting flights between hospitals with authorization from "DSAC NORD EST" and agreement protocol with "SNA NORD EST".

In addition, the concerned operators must implement specific instructions in accordance with the conditions defined in the protocol signed with SNA NORD EST.

ROUTE OPERATING CONDITIONS :

This IFR route is for use only for helicopter operators with IFR RNP 0.3 capacity.

This route can be used in VMC under VFR or IFR as part of reconnaissance flights or for air crew skill maintenance ; otherwise, the route is for use only in IMC under IFR.

Establishing the crews' operating instructions is the responsibility of the operator.

CONTACT DETAILS :

DSAC NORD-EST : Subdivision navigation aérienne - dsac-ne-espaces-aeriens-bf@aviation-civile.gouv.fr

SNA NORD-EST : Subdivision Études et Environnement - etudes-pans-ops.sna-ne.ld@aviation-civile.gouv.fr

CHART AND CODING TABLE :

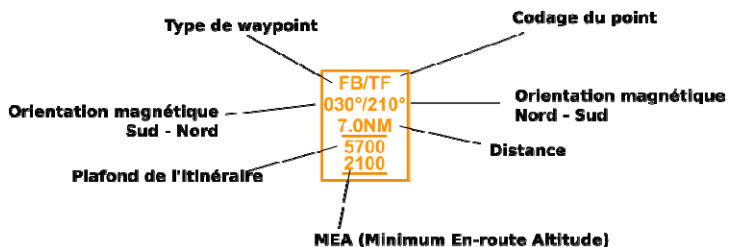
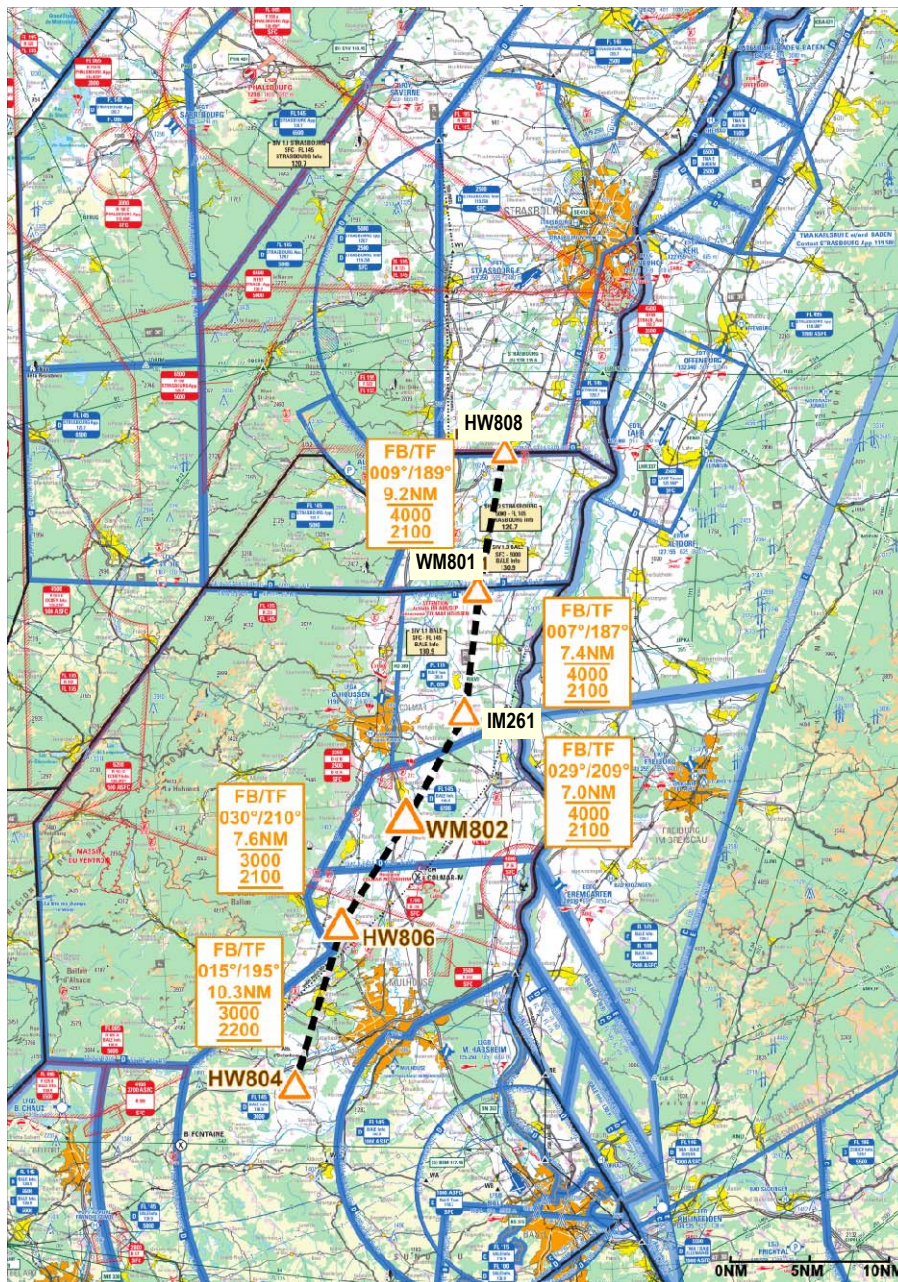
Cf appendix

ALSACE PLAIN LOW ALTITUDE IFR ROUTE FOR HELICOPTERS

Magnetic variation on 01 JAN 2020

at waypoint IM261 (48°05'08.1"N, 007°29'08.1"E) : 2.4496°E

RNP 0.3



CODING TABLE
ALSACE PLAIN LOW ALTITUDE IFR ROUTE FOR HELICOPTERS

ENR- HELICOPTER ROUTES										
		Route MAG <i>MAG track</i>		Dist (NM)	Limites verticales <i>Vertical Limits</i>		MOCA (ft AMSL)	Série FL FL series		ATC / SIV
Désignation	Coordonnées <i>Coordinates</i>	□	□		supérieure <i>upper</i>	Inférieure <i>lower (MEA)</i>		impair <i>odd</i>	pair <i>even</i>	
1		2		3	4		5	6		7
KY110										
Δ HW808	48°21'30.0"N 007°33'41.0"E	Remarque : HW808 est le point de sortie de la CTR LFST / HW808 is the LFST CTR exit point								
		189	9	9.24	4000	2100	1800	□	□	BALE
Δ WM801	48°12'26.7"N 007°30'58.1"E									
		187	7	7.42	4000	2100	1800	□	□	BALE
Δ IM261	48°05'08.1"N 007°29'08.1"E									
		209	29	7.05	4000	2100	1900	□	□	BALE
Δ WM802	47°59'08.4"N 007°23'36.2"E									
		210	30	7.58	3000	2100	2000	□	□	BALE
Δ HW806	47°52'46.0"N 007°17'30.0"E									
		195	15	10.27	3000	2200	2200	□	□	BALE
Δ HW804	47°42'57.0"N 007°13'03.0"E									