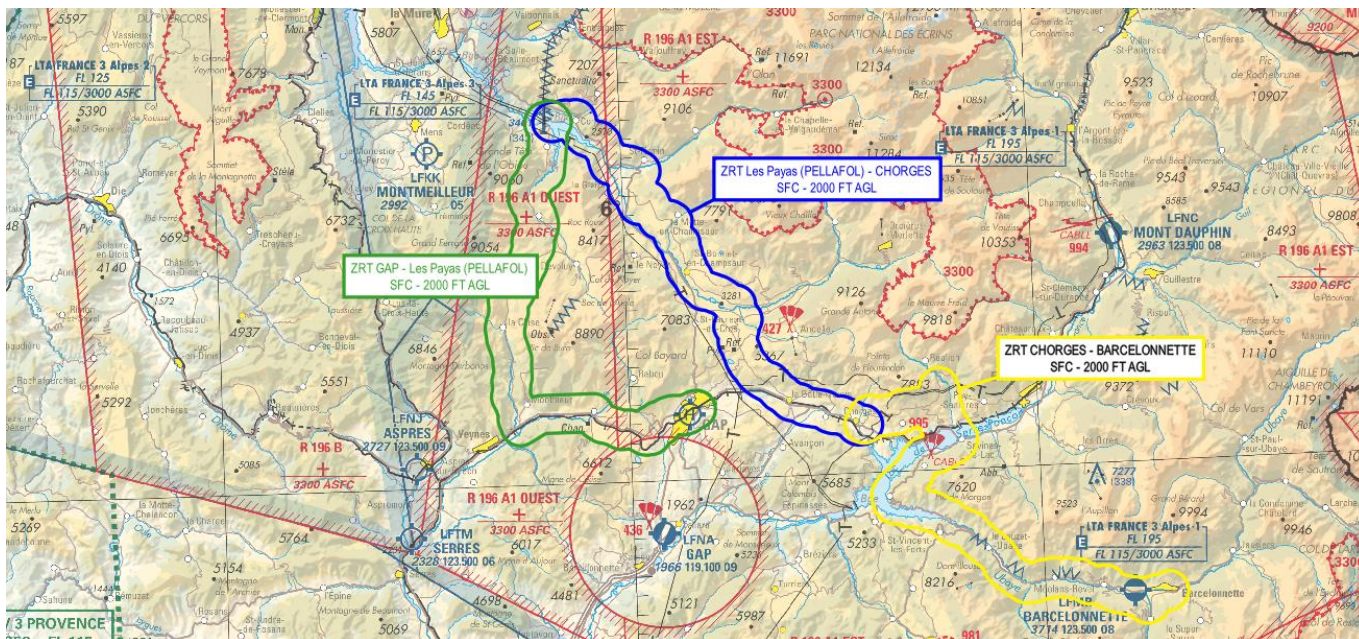


Subject : Creation of 3 Temporary Restricted Areas (ZRT) for the 2024 Tour de France 18th Stage
With effect : THURSDAY 18 JULY 2024

Location : FIR : Marseille LFMM - AD : Barcelonnette Saint Pons LFMR – Heliport : centre Hospitalier Gap



Excerpt from 1 / 500 000 ICAO chart – 2024 edition

ACTIVITY
Several ACFT flying for broadcasting the Tour de France 18th Stage, GAP - BARCELONNETTE
DATES AND TIMES OF ACTIVITY
ZRT Gap – Les Payas (Pellafol) : 1045 - 1250 ZRT Les Payas (Pellafol) - Chorges : 1220 - 1418 ZRT Chorges – Barcelonnette : 1348 - 1612
USER INFORMATION
MARSEILLE INFO SUD : 120.550 MHz
STATUS
Temporary Restricted Areas (ZRT) coexisting with the portions of controlled airspaces with which they overlap and replacing the portions of the uncontrolled airspaces with which they overlap.
ENTRY CONDITIONS
GAT VFR and OAT : Compulsory avoidance except for : - ACFT with authorization from the Tour de France organization, - State ACFT on air security mission, - ACFT conducting assistance, rescue or public safety missions when their mission is not compatible with the avoidance of the ZRT.
GAT IFR : Upon authorization and according to the instructions of the ATS unit providing air traffic services.
SERVICES PROVIDED
In the portions of ZRTs coexisting with portions of controlled airspaces : the usual ATC units provide the air traffic services in accordance with the aforementioned portions of controlled airspaces class.
In the portions of ZRTs replacing portions of uncontrolled airspaces : flight information and alert services are provided.

LATERAL AND VERTICAL LIMITS**Lateral limits**

1 NM on either side of the race tracks :

ZRT GAP – Les Payas (PELLAFOL)

GAP (D994)
 LA FREISSINOUSE
 Les Marcellons
 LA ROCHE DES ARNAUDS
 Carrefour D994-D937
 D937 Les Garcins (DÉVOLUY)
 Col du Frestre
 AGNIERE EN DÉVOLUY
 Saint Disdier (DÉVOLUY)
 D537 La Posterle (PELLAFOL)
 Les Payas (PELLAFOL)

ZRT Les Payas (PELLAFOL) - CHORGES

Les Payas (PELLAFOL)
 Le Sautet (PELLAFOL)
 Côte de Corps
 CORPS (D537-N85)
 N85 Chauffayer (AUBESSAGNE) N85-D23
 D23 Les Costes (AUBESSAGNE)
 SAINT BONNET EN CHAMPSAUR (D23-D945)
 D945 SAINT BONNET EN CHAMPSAUR
 Le Domaine
 Carrefour D945-D215
 D215 Carrefour D215-D114
 D144 Carrefour D114-D944
 D944 Manse (FOREST SAINT JULIEN)
 Carrefour D944-D14
 D14 Côte de Manse
 LA BATÎE NEUVE (D14-VC)
 Carrefour VC-N94
 N94 CHORGES

ZRT CHORGES - BARCELONNETTE

CHORGES
 Carrefour N94-VC
 Carrefour VC- D9
 D9 Côte de saint Apollinaire
 SAINT APOLLINAIRE
 Carrefour D9-D41
 D41 Chérines
 Carrefour D41-N94
 N94 SAVINES LE LAC (N94-D954)
 D954 Côte des Demoiselles Coiffées
 Obannes
 Les Demoiselles Coiffées
 LE SAUZE DU LAC
 Carrefour D954-D900
 D900 LE LAUZET-UBAYE
 La Fresquièrre (MÉOLANS-REVEL)
 LES THUILES (D900-D109)
 D109 Carrefour D109-D908
 D908 Carrefour D908-D902
 D902 BARCELONNETTE

Vertical limits

SFC / 2000 FT AGL

SPECIAL PROVISIONS

Activities AEM 9654 Pellafol and parachuting activity N°995 are suspended during ZRT activity.

SPECIAL INSTRUCTIONS

Airspace users are invited to consult daily the additional information that could be brought to their attention by the aeronautical information service.