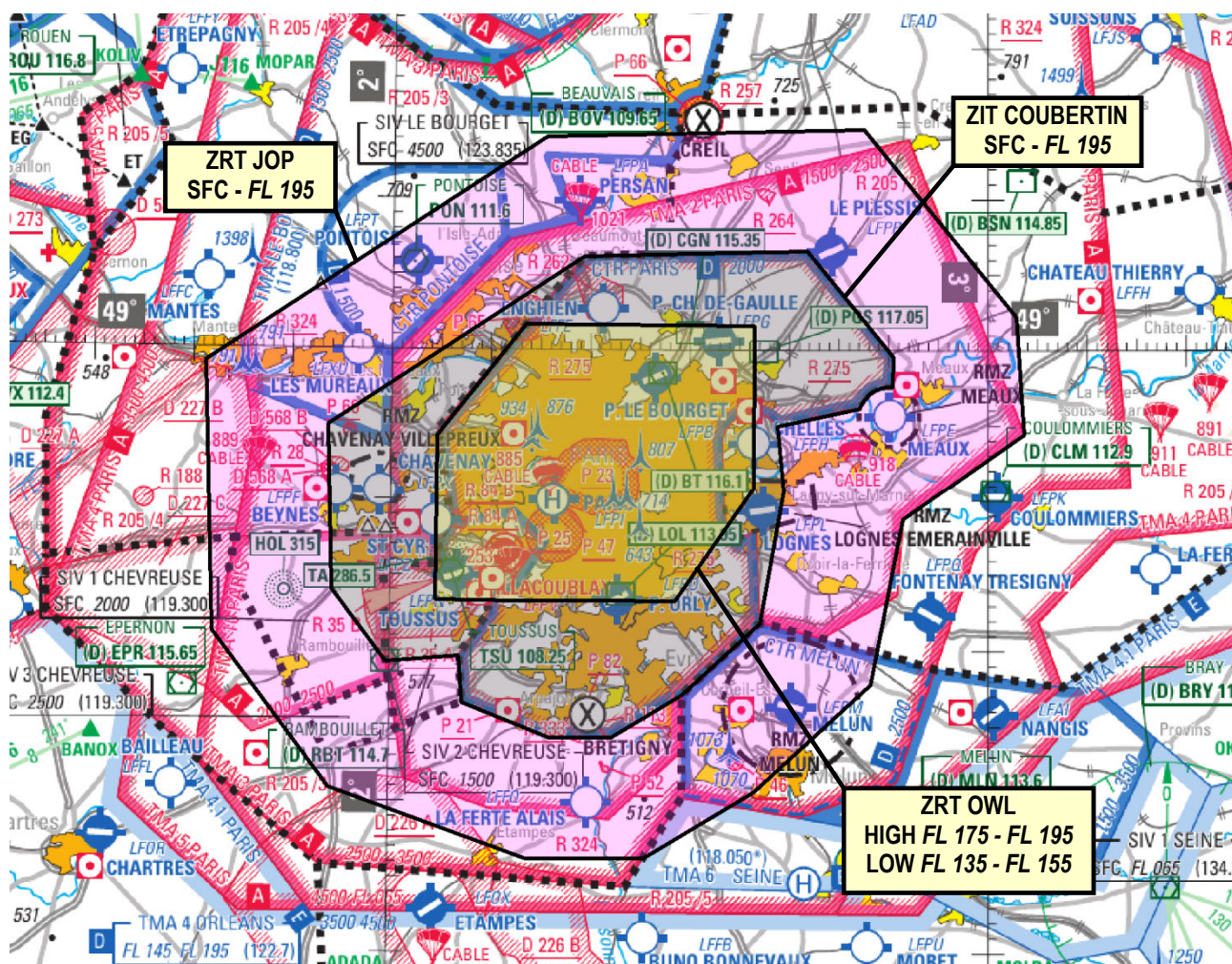


Subject: Creation of a temporary prohibited area (ZIT) and three temporary restricted areas (ZRT) for the special aviation security system (DPSA) linked to the protection of the 2024 Paris Olympic and Paralympic Games.

With effect : From 22 July to 08 September 2024

Location : FIR : Paris LFFF - Hélicoptère : Paris Issy-Les-Moulineaux Valérie André LFPI.

AD : Beynes Thiverval LFPF, Chavenay Villepreux LFPX, Chelles Le Pin LFPH, Enghien Moisselles LFFE, La Ferté Alais LFFQ, Le Plessis Belleville LFPF, Les Mureaux LFXU, Lognes Emerainville LFPL, Meaux Esbly LFPE, Melun Villaroche LFPM, Paris Charles de Gaulle LFPG, Paris Orly LFPO, Paris Le Bourget LFPB, Persan Beaumont LFPA, Pontoise Corneilles en Vexin LFPT, Saint Cyr L'Ecole LFPZ, Paris-Saclay-Versailles (ex Toussus-le-Noble) LFPN, Villacoublay Vélizy LFPV, Beauvais-Tillé LFOB.



Excerpt from 1/1 000 000 SIA - 1 / 2024 edition

ACTIVITY

A temporary prohibited area (ZIT COUBERTIN) and a temporary restricted area (ZRT JOP) are created on a temporary basis to ensure the implementation of the special aviation security measures (DPSA) as part of the protection of the 2024 Paris Olympic and Paralympic Games.

Two temporary restricted areas (ZRT OWL HIGH and LOW) are created to allow the flight of unmanned state aircraft, in coordination with the ATS organization in charge.

DATE AND TIMES OF ACTIVITY	
DPSA validation and training ZIT COUBERTIN and ZRT JOP active	from July 22 06h00 to July 23 23h59
Olympic Games ZIT COUBERTIN, ZRT JOP and ZRT OWL H/L active	from July 24 00:00 to August 11 23:59
DPSA validation and training ZIT COUBERTIN and ZRT JOP active	from August 26 06:00 to August 27 23:59
Paralympic Games ZIT COUBERTIN and ZRT JOP active ZRT OWL can be activated	from August 28 00:00 to September 08 23:59 from August 28 00:00 to September 08 23:59
USER INFORMATION	
RAKI (Cinq Mars La Pile CRC) :	143.550 MHz, 317.500 MHz
RAMBERT (Lyon Mont Verdun CRC) :	143.550 MHz, 317.500 MHz
ATS UNITS :	usual frequencies
MANAGING AUTHORITIES	
ZIT COUBERTIN and ZRT JOP : Cinq-Mars-la-Pile CRC or, in the event of technical unavailability, back-up CRC.	
ZRT OWL H/L : Elément Air de contrôle de l'Aéroport (EACA) Roissy.	
STATUS	
ZIT COUBERTIN : temporary prohibited area (ZIT) which coexists with the airspace portions with which it overlaps.	
ZRT JOP and ZRT OWL : temporary restricted areas (ZRT) that coexist with the portions of airspace with which they overlap.	
SERVICES PROVIDED	
OAT : control, flight information and alert services are provided in ZRT and ZIT by the usual units.	
GAT : in the parts of the ZIT and ZRT that coexist with airspace, the usual ATS units provide users with the services associated with the classes of airspace with which these areas coexist.	
LATERAL AND VERTICAL LIMITS	
<p style="text-align: center;">ZIT COUBERTIN</p> <p style="text-align: center;">Lateral limits</p> <p style="text-align: center;">49°06'36"N - 002°41'48"E 48°59'38"N - 002°50'29"E 48°57'36"N - 002°50'18"E Counter-clockwise arc of a circle 2 NM radius centered on 48°55'37"N - 002°50'02"E 48°56'17"N - 002°47'10"E 48°55'00"N - 002°38'48"E 48°50'40"N - 002°39'31"E 48°41'55"N - 002°37'08"E 48°37'08"N - 002°29'20"E 48°34'17"N - 002°22'17"E 48°34'15"N - 002°16'05"E 48°36'34"N - 002°07'17"E 48°39'40"N - 002°06'57"E 48°39'14"N - 001°59'39"E 48°44'00"N - 001°54'10"E 48°54'58"N - 001°53'37"E 49°06'13"N - 002°19'16"E 49°06'36"N - 002°41'48"E</p> <p style="text-align: center;">excluding :</p> <p style="text-align: center;">- prohibited areas LF-P21, LF-P23, LF-P25, LF-P47, LF-P65, LF-P69, LF-P82, LF-P226L.</p> <p style="text-align: center;">Vertical limits SFC / FL 195</p>	

LATERAL AND VERTICAL LIMITS
<p style="text-align: center;">ZRT JOP</p> <p style="text-align: center;"><u>Lateral limits</u></p> <p style="text-align: center;">49°14'41"N - 002°47'29"E 49°02'16"N - 003°02'54"E 48°54'28"N - 003°03'39"E 48°48'50"N - 002°51'28"E 48°37'51"N - 002°48'17"E 48°30'43"N - 002°36'37"E 48°26'18"N - 002°25'39"E 48°26'15"N - 002°13'50"E 48°30'54"N - 001°54'05"E 48°41'10"N - 001°42'14"E 48°59'07"N - 001°41'15"E 49°14'08"N - 002°15'26"E 49°14'41"N - 002°47'29"E</p> <p style="text-align: center;">Excluding :</p> <ul style="list-style-type: none"> - ZIT Coubertin, - prohibited areas LF-P52 and LF-P46, - the part overlapping with LF-P66. <p style="text-align: center;"><u>Vertical limits</u></p> <p style="text-align: center;">SFC / FL 195</p>
<p style="text-align: center;">ZRT OWL HIGH and LOW</p> <p style="text-align: center;"><u>Lateral limits</u></p> <p style="text-align: center;">48°54'18"N - 002°04'35"E 49°01'41"N - 002°13'28"E 49°01'41"N - 002°36'30"E 48°50'53"N - 002°36'30"E 48°43'20"N - 002°28'35"E 48°43'20"N - 002°04'35"E 48°54'18"N - 002°04'35"E</p> <p style="text-align: center;"><u>Vertical limits</u></p> <p style="text-align: center;">HIGH FL 175 / FL 195 LOW FL 135 / FL 155</p>

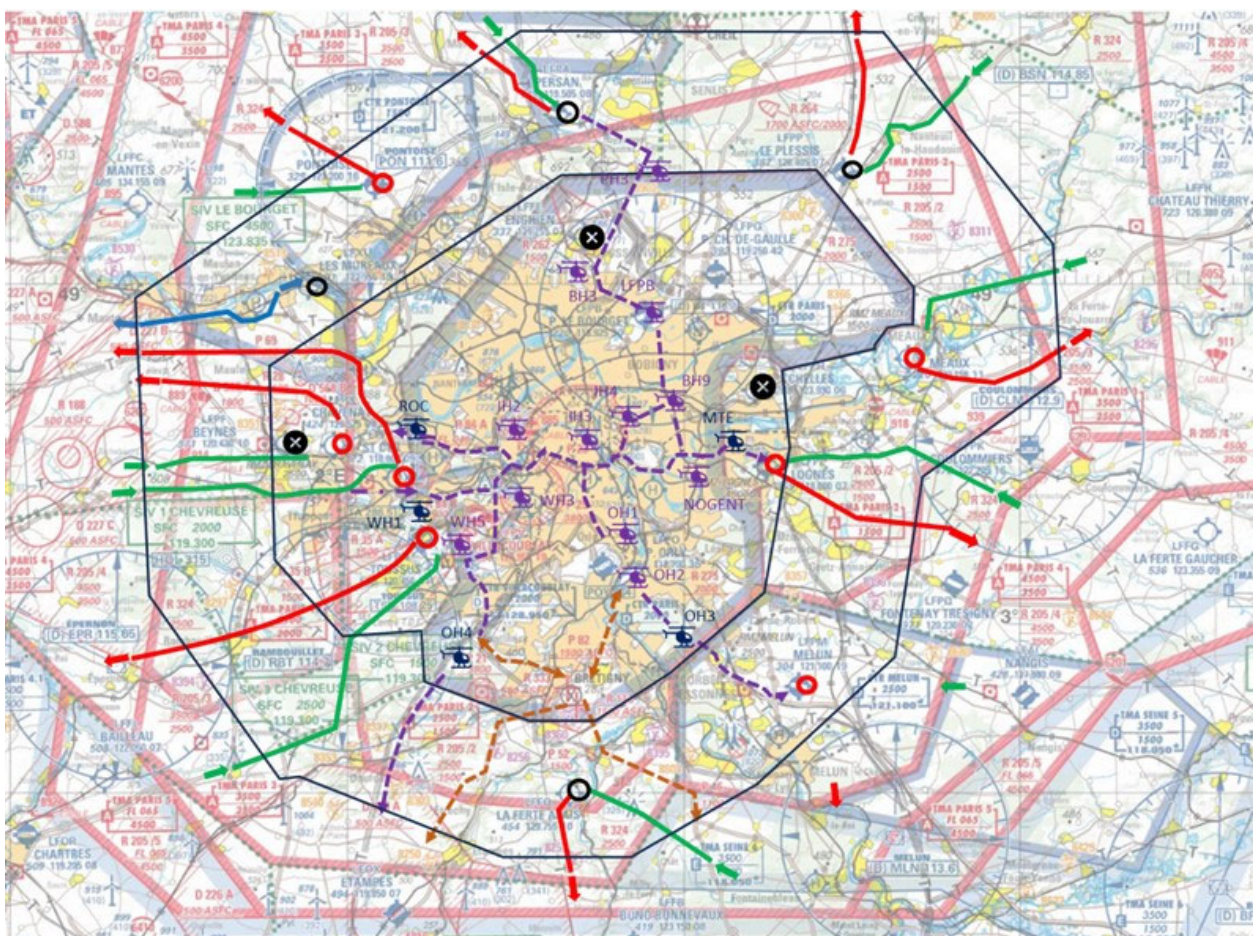
ENTRY CONDITIONS
<p>Entry conditions are specified and defined in AIC 07/24.</p> <p>The C3MOA (Centre de Coordination Civil-Militaire des Opérations Aériennes) is the authority responsible for planning and authorizing air activity in ZRT and ZIT. Care will be taken to take into account, as far as possible, the requests of involved users.</p> <p>The following principles apply for ZIT Coubertin and/or ZRT JOP :</p> <ul style="list-style-type: none"> ➤ <u>Transponder mode 3/A and radio equipment mandatory (code 3/A required).</u> ➤ Flight authorization. ➤ Flight plan filing (with exceptions defined in AIC 07/24). <p>Airspace users are invited to consult daily the NOTAMs for any amendments or supplements that could be published.</p>

ENTRY CONDITIONS			
	GAT IFR	OAT T and OAT I	GAT VFR - OAT V
ZIT COUBERTIN	<p>Only flights to and from Paris CDG (LFPG), Orly (LFPO), Le Bourget (LFPB), Paris-Saclay-Versailles (<i>ex Toussus-le-Noble</i>) (LFPN), Villacoublay-Vélizy (LFPV), Beauvais-Tille (LFOB) are authorized.</p> <p>Follow the instructions of the usual ATS unit.</p> <p>Training flights are not allowed.</p>	<p>Entry prohibited except for aircraft participating in the DPSA or authorized by the C3MOA.</p> <p>Follow the instructions of the usual ATS unit.</p>	<p>Entry prohibited except for flight categories authorized by the C3MOA, in particular :</p> <ul style="list-style-type: none"> - urgent assistance, rescue, public safety or DPSA-related missions whose execution is incompatible with the ZIT avoidance, - aircraft to or from Villacoublay-Vélizy aerodrome (LFPV), - aircraft based (or assimilated) at an aerodrome located in ZRT or ZIT, flying to or from Lognes (LFPL), Paris-Saclay-Versailles (<i>ex Toussus-le-Noble</i>) (LFPN), Saint-Cyr (LFPZ), Chavenay (LFPX), Issy-les-Moulineaux (LFPI), - non-based ACFT flying to Lognes (LFPL), Paris-Saclay-Versailles (<i>ex Toussus-le-Noble</i>) (LFPN), Saint-Cyr (LFPZ), Chavenay (LFPX), Issy-les-Moulineaux (LFPI) <u>after a mandatory stopover</u> at Melun or Pontoise for identity checks, - helicopters based (or assimilated) at Issy les Moulineaux or Le Bourget, to and from Le Bourget (LFPB), - government helicopters to and from Brétigny, - flights operated in connection with the Olympic Games for companies commissioned by OBS (Olympic Broadcasting Services) or Paris 2024, - e-VTOL (Vertical Take-off and Landing), <p>Operations suspended at Enghien-Moisselles (LFFE), Beynes-Thiverval (LFPP) and Chelles-Le Pin (LFPH).</p>
ZRT JOP	<p>Only flights to and from Paris CDG (LFPG), Orly (LFPO), Le Bourget (LFPB), Paris-Saclay-Versailles (<i>ex Toussus-le-Noble</i>) (LFPN), Villacoublay-Vélizy (LFPV), Pontoise (LFPT), Melun (LFPM) and Beauvais-Tillé (LFOB) are authorized.</p> <p>Follow the instructions of the usual ATS organization.</p> <p>Training flights are not permitted</p>	<p>Mandatory avoidance except for aircraft participating in the DPSA or authorized by the C3MOA.</p> <p>Follow the instructions of the usual ATS organization.</p>	<p>Mandatory avoidance, except for flight categories authorized by the C3MOA, in particular :</p> <ul style="list-style-type: none"> - urgent assistance, rescue, public safety or DPSA-related missions whose execution is incompatible with the ZRT avoidance, - aircraft to and from Pontoise (LFPT), Persan (LFPA), Le Plessis (LFPP), Meaux (LFPE), Melun (LFPM), La Ferté Alais (LFFQ) and Les Mureaux (LFXU), - flights to and from airfields / helipads located in the ZIT COUBERTIN, - flights operated in connection with the Olympic Games for the benefit of companies commissioned by OBS or Paris 2024, - e-VTOL (Vertical Take-off and Landing).
ZRT OWL	<p>Entry after coordination between the ATC units concerned.</p>	<p>Entry after coordination between the ATC units concerned.</p>	<p>Mandatory avoidance.</p>

ADDITIONAL PROVISIONS
<p>Within DPSA implementation, the following zones can be activated for the Armed Forces :</p> <ul style="list-style-type: none"> - EPT E3-F: LF-TRA 8A+B (FR29), and/or LF-TRA 9A+B (FR28), and/or LF-TRA 10C (FR27) (in this order of priority), - unmanned ACFT North corridors published by dedicated AIP SUP and activated by NOTAM, - ZRT PO A and B published by dedicated AIP SUP and activated by NOTAM.
<p>For air security reasons (DPSA), restrictions on all activities may be imposed in real time by the military authorities, notably through the distribution of color codes (via "réseau de confiance"). These color codes are defined in AIC n° 07/24.</p> <p>Specific traffic flow regulation measures, including the temporary suspension of IFR flights, are likely to be implemented at all aerodromes located in ZIT and ZRT.</p>
<p>All activities (with or without winching) involving aerobatics, parachuting, gliders and motorgliders, paragliders (motorized or not), ULM without transponders (mode 3/A and C), gyrocopters, dirigibles, balloons (free, captive or bladder balloon), hang gliders and any other flying machines (motorized or not) are suspended. The C3MOA may exceptionally authorize some professional activities.</p> <p>Model aircraft activity possible exclusively at AEM sites listed in the AIP and located in the ZRT JOP.</p>
<p>Some activities (state-owned) may be maintained in the following areas after C3MOA agreement :</p> <ul style="list-style-type: none"> - LF-R264 (shooting range), LF-R3111 A/B para bièvres RAID, ZRT Satory para GIGN, ZRT Ablis, - LF-R28 Beynes (GN), LF-D568 A/B Frileuse (GN), LF-D226 A, LF-D227 A/B/C (GIH), <p>Unmanned ACFT activities in LF-R333 (Cluster drones), ZRT Sud Francilien will be possible after agreement from C3MOA.</p> <p>Surveillance of HV or railroad lines and pyrotechnic clean-up will be possible with the agreement of the C3MOA.</p>
<p>Entry of ZIT Coubertin and the ZRT JOP requires :</p> <ul style="list-style-type: none"> - for IFR, respecting the trajectories in force, - VFR pilots to adhere strictly to the procedures and flight paths defined below. <p>The flight authorization reference must appear in box 18 of the flight plan for the flights concerned.</p>
<p>The rules applicable to unmanned aircraft flights are set out in AIC n° 07/24 and in the dedicated paragraph below (p.10).</p>
<p>For reasons of air safety and security, the rules for authorizing flight in LF-P23 will be identical to those applied in ZIT COUBERTIN.</p>
<p>Access procedures to Villacoublay-Vélizy AD (LFPV) remain unchanged.</p>
<p>A helipad for state helicopters is created at Brétigny.</p>
<p>POGO procedures for training purposes are suspended.</p>

PROCEDURE FOR ENTERING AND FLYING WITHIN ZIT COUBERTIN AND ZRT JOP MANNED AIRCRAFT
FLIGHT PLAN AND FLIGHT INTENTIONS
<p>The procedures for filing flight plans and flight intentions are described in AIC n° 07/24.</p>

IMPERATIVE ROUTES IN VFR
General map



- | | | |
|--------------------------|----------------------------------|-------------------------------|
| ⊗ Aerodrome closed | → Helicopter route | ✈ Helicopter entry/exit point |
| ○ Uncontrolled aerodrome | → Entry/exit route | ✈ Helicopter transit point |
| ● Controlled aerodrome | → Entry route | |
| | → Exit route | |
| | → Military only helicopter route | |

IMPERATIVE ROUTES IN VFR					
Descriptions					
Arrivals and departures must take place at the entry and exit points shown on the maps (see Appendix I), and defined below. Any other route may be considered as a potential threat.					
1- Entry and exit points for ZRT JOP					
AD CONCERNED	NAME	IDENTIFICATION	COORDINATES	SPECIFICATIONS	Unit to contact / frequency
Pontoise-Cormeilles	W	Frémainville distillery	49°04'02" N - 001°52'37" E	Entry for LFPT only	Pontoise TWR 121.200 MHz
Pontoise-Cormeilles	NW	Bercagny water tower	49°08'51" N - 001°53'57" E	Exit for LFPT only	Pontoise TWR 121.200 MHz
Meaux-Esbly	EPE	SNCF bridge over the Marne South of Lizy-sur-Ourcq	49°00'50" N - 003°01'15" E	Entry for LFPE only	Meaux TWR 120.150 MHz
Meaux-Esbly	SPE	High-voltage line crossing highway A4	48°56'04" N - 003°01'40" E	Exit for LFPE only	Meaux TWR 120.150 MHz
Melun - Villaroche	EPM	Mormant NW - Industrial area	48°37'06" N - 002°52'33" E	Entry for LFPM only	Melun TWR 121.100 MHz
Melun - Villaroche	SM	SM - Chartrettes	48°29'12" N - 002°42'07" E	Exit for LFPM only	Seine Info 118.050 MHz ou Melun TWR 121.100 MHz
Persan-Beaumont	EPA	RTE substation (Terrier electric substation) west of Neuilly-en-Thelle	49°13'04" N - 002°15'33" E	Entry for LFPA only	Paris INFO 125.700 MHz
Persan-Beaumont	SPA	Crossing North Bornel	49°13'47" N - 002°10'53" E	Exit for LFPA only	Paris INFO 125.700 MHz
Le Plessis-Belleville	EPP	North of Lévigney South of Crépy-en-Valois (sand pit)	49°12'23" N - 002°55'14" E	Entry for LFPP only	Paris INFO 125.700 MHz
Le Plessis-Belleville	SPP	Railway East of Rully	49°14'15" N - 002°44'42" E	Exit for LFPP only	Paris INFO 125.700 MHz
La Ferté-Alais	EFQ	Fleury-en-Bière toll station on the A6 freeway	48°25'19" N - 002°32'35" E	Entry for LFFQ only	Paris INFO 126.100 MHz
La Ferté-Alais	SFQ	West of Boutigny-sur-Essonne	48°26'15" N - 002°18'47" E	Exit for LFFQ only	Paris INFO 126.100 MHz
Les Mureaux	FXU	Magnanville south of Mantes-la-Jolie	48°57'55" N - 001°41'04" E	Entry/exit for LFXU only	Paris INFO 125.700 MHz
Note : whenever possible, enter at 1500 ft AGL to ensure good radio contact with the ATS unit. ATC units and frequencies can be adapted in real time as required, and will be communicated via the C3MOA authorization.					
2- Entry and exit points for ZIT COUBERTIN					
AD CONCERNED	NAME	IDENTIFICATION	COORDINATES	SPECIFICATIONS	Unit to contact / frequency
Chavenay-Villepreux	EPX	South of Orgerus	48°49'16" N - 001°42'20" E	Entry for LFPX only	Chavenay TWR 129.525 MHz
Chavenay-Villepreux	SPX	North of Septeuil	48°54'11" N - 001°40'37" E	Exit for LFPX only	Chavenay TWR 129.525 MHz
Lognes-Emerainville	EPL	Railway/QDM 298° BT - North of Mortcerf	48°48'16" N - 002°55'03" E	Entry for LFPL only	Lognes TWR 118.600 MHz
Lognes-Emerainville	SPL	Road bridge over the RN36 road	48°44'56" N - 002°51'29" E	Exit for LFPL only	Lognes TWR 118.600 MHz
Saint-Cyr l'Ecole	EPZ	Bridge over RN12 by Bazainville	48°47'44" N - 001°40'16" E	Entry for LFPZ only	Saint-Cyr TWR 118.000 MHz
Saint-Cyr l'Ecole	SPZ	South of Mantes-la-Jolie	48°55'55" N - 001°41'20" E	Exit for LFPZ only	Saint-Cyr TWR 118.000 MHz

Paris-Saclay-Versailles (ex Toussus-le-Noble)	EPN	A11 North of Ablis	48°31'38" N - 001°49'48" E	Entry for LFPN only	Toussus TWR 120.750 MHz
Paris-Saclay-Versailles (ex Toussus-le-Noble)	SPN	North of city of Epernon	48°37'48" N - 001°40'28" E	Exit for LFPN only	Toussus TWR 120.750 MHz
Note : whenever possible, enter at 1500 ft AGL to ensure good radio contact with "RAKI SURVEILLANCE" (120.075 MHz). Reminder : the identification procedures inherent in LF-R324 penetration remain in force. ATC units and frequencies can be adapted in real time as required, and will be communicated via the C3MOA authorization.					
3- Helicopter route points					
NAME	CODE	COORDINATES	SPECIFICATIONS	Unit to contact / frequency	
Rocquencourt	ROC	48°50'32" N - 002°05'44" E	Motorway junction/ Exit only	Moulineaux TWR 118.500 MHz	
Saint Cloud Bridge	SCL	48°50'29" N - 002°13'24" E	Bridge over the Seine/ Reporting point	Moulineaux TWR 118.500 MHz	
Pont de Sèvres	IH2	48°49'42" N - 002°13'37" E	Bridge over the Seine/ Reporting point	Moulineaux TWR 118.500 MHz	
Gentilly	IH3	48°48'59" N - 002°20'38" E	Ring road and motorway A6 junction/ LFPI/ LFPO integration	Moulineaux TWR 118.500 MHz	
Porte de Bagnolet	IH4	48°51'56" N - 002°24'49" E	Ring road and motorway A4 junction/ Reporting point	Moulineaux TWR 118.500 MHz	
Porte de Bercy	BERCY	48°49'33" N - 002°23'25" E	A4 junction/ Reporting point	Moulineaux TWR 118.500 MHz	
Joinville	JVL	48°48'58" N - 002°26'56" E	A86/ Marne Reporting point	Moulineaux TWR 118.500 MHz	
Nogent	NOGENT	48°49'50" N - 002°29'36" E	Intersection A86/ Marne Reporting point	Moulineaux TWR 118.500 MHz	
Mont d'Est	MTE	48°50'10" N - 002°33'20" E	North Fort de Villiers on A4 Reporting point	Moulineaux TWR 118.500 MHz	
Heliport	LFPI	48°50'00" N - 002°16'22" E		Moulineaux TWR 118.500 MHz	
Aulnay	BH8	48°55'47" N - 002°28'40" E	A3/ railroad Reporting point	Le Bourget VFR 130.865 MHz	
Rosny	BH9	48°53'14" N - 002°28'27" E	Motorway junction/ Reporting point	Le Bourget VFR 130.865 MHz	
Blanc Mesnil	BH1	48°57'02" N - 002°28'28" E	A3/ N2 junction LFPB/ LFPG integration	Le Bourget VFR 130.865 MHz	
G. Roussy Hospital	OH	48°47'26" N - 002°20'39" E	A6 beside hospital/ Transit (or integration) LFPI/LFPO	Orly TWR 118.700 MHz or Moulineaux TWR 118.500 MHz	
Pondorly	OH1	48°45'58" N - 002°21'20" E	Rungis Market/ LFPO/ LFPI integration	Orly TWR 118.700 MHz	
Juvisy station	OH2	48°41'47" N - 002°23'33" E	Marshalling yard/ LFPO/ LFPI integration	Orly TWR 118.700 MHz	
Croix de Villeroi	OH3	48°39'12" N - 002°30'20" E	West crossroad of Croix de Villeroi/ Integration LFPO	Orly TWR 118.700 MHz Paris INFO 126.100 MHz	
Bris sous Forges	OH4	48°37'20" N - 002°08'04" E	Junction A10/ D97 LFPO integration	Orly TWR 118.700 MHz or Paris INFO 126.100 MHz	
Versailles Marchandises	WH1	48°47'31" N - 002°05'50" E	Abeam marshalling yard / Transit LFPV	Villa TWR 128.950 MHz	

Versailles South	WH2	48°47'08" N - 002°09'14" E	Interchange (Pont Colbert A86)/ Transit LFPV	Villa TWR 128.950 MHz
Carrefour de la Patte d'Oie	WH3	48°48'00" N - 002°12'57" E	N118/ Transit LFPV	Villa TWR 128.950 MHz
Favreuse service station	WH4	48°44'48" N - 002°11'47" E	Favreuse East / N118 road Transit LFPV	Villa TWR 128.950 MHz
Christ de Saclay	WH5	48°43'50" N - 002°09'48" E	Crossroad/ Transit LFPV	Villa TWR 128.950 MHz

4- Military only helicopter route points

NAME	CODE	COORDINATES	SPECIFICATIONS	Unit to contact / frequency
Brétigny Air base		48°35'46" N - 002°19'58" E	Helipad	Orly TWR 118.700 MHz
Juvisy station	OH2	48°41'47" N - 002°23'33" E	Marshalling yard / LFPO/ LFPI integration	Orly TWR 118.700 MHz
Bris sous Forges	OH4	48°37'20" N - 002°08'04" E	Crossroad A10 / D97 LFPO integration	Orly TWR 118.700 MHz
South-East entry/exit of ZRT	ZRT SE	48°28'26" N - 002°31'00" E	A6 junction / N37	Melun TWR INFO 121.100 MHz
South-West entry/exit of ZRT	ZRT SO	48°26'48" N - 002°06'28" E	Star roundabout between roads D191, D836, D821 and D201	Paris info 126.100 MHz

5- Intermediate points for military only helicopter routes

NAME	COORDINATES	SPECIFICATIONS	Unit to contact / frequency
Roundabout D31	48°34'18" N – 002°21'52" E	Non-hazardous waste storage centre (Groupe Sémardel)	Paris info 126.100 MHz
Roundabout Nord D191	48°31'55" N – 002°23'19" E	North Ballancourt-sur-Essonne	Paris info 126.100 MHz
Junction A6	48°30'25" N – 002°30'40" E	North Nainville-les-Roches	MELUN TWR INFO 121.100 MHz
D19/ RN20 junction	48°34'22" N - 002°14'03" E	Crossroad	Paris info 126.100 MHz
Mauchamps turning point	48°31'54" N - 002°12'29" E	RN20 / West of Sandpit	Paris info 126.100 MHz
Chauffour turning point	48°30'23" N - 002°09'45" E	North Chauffour-lès-Etrechy	Paris info 126.100 MHz

6- Identification for aviation security reasons

For identification : radio contact and 3/A transponder :

For all flights, radio contact must be established with the ATS unit before departure, or before entering the ZIT COUBERTIN and/or ZRT JOP, in order to confirm the information previously communicated, and to take into account any additional instructions.

In the absence of an ATS unit at aerodromes located in the ZRT JOP (for a departure and/or once landed), contact will be made by telephone with the local "réseau de confiance" correspondent.

In flight, radio contact and the display of the transponder code given by the C3MOA when a flight authorization is issued are maintained at all times. Outside Paris FIC opening hours, radio contact with RAKI Surveillance will be established for identification purposes, and then maintained during transit in ZRT (remember : the identification procedures inherent in entering LF-R324 remain in force).

1 - Aviation security procedures

- Compliance with the VFR entry/exit paths published in Appendix I is **imperative** for arrivals/departures at the following airfields/heliports :

Chavenay, Brétigny, Issy-les-Moulineaux, La Ferté-Alais, Le Plessis-Belleville, Les Mureaux, Lognes, Meaux, Melun, Persan Beaumont, Pontoise, St Cyr and Paris-Saclay-Versailles (*ex Toussus-le-Noble*), Villacoublay-Vélizy.

This means that flights from an aerodrome located in ZIT or ZRT to another aerodrome located in ZIT or ZRT will have to follow the imposed trajectories, which in practice means leaving the ZIT or ZRT to reach the entry points of the imposed paths.

- Any non-based (or assimilated) aircraft entering the ZRT JOP under VFR, bound for an airfield in the ZIT COUBERTIN or ZRT JOP must land at the Pontoise or Melun AD, where the Air Transport Gendarmerie (GTA) will check the identity of the crew and passengers. Take-off to an AD in ZIT Coubertin or ZRT JOP can then take place, in compliance with the published IFR routes or VFR routes described above.

- IFR flights bound for Paris-Saclay-Versailles (*ex Toussus-le-Noble*) will be able to fly directly to the aerodrome. The GTA at Paris-Saclay-Versailles (*ex Toussus-le-Noble*) will be responsible for checking non-based aircraft on arrival.

- Flights are suspended at the St-Cyr aerodrome from H-2 to H+2 for the Olympic and Paralympic equestrian events.

- Flights are suspended at the Paris-Saclay-Versailles aerodrome (*ex Toussus-le-Noble*) from H-2 to H+2 for the Olympic golf events.

- The presence of representatives of the "réseau de confiance" will be effective during periods of air activity on the aerodromes (cf. procedures specified in AIC 07/24).

- Take-offs/landings/circuit patterns on uncontrolled aerodromes located in the ZRT JOP are possible with A/A information in aerodrome traffic, after authorization from the C3MOA and prior coordination with the "réseau de confiance". However, transit in ZRT JOP requires permanent two-way radio contact with an ATS unit or with RAKI surveillance, outside the opening hours of the Paris FIC in its area of responsibility.

- A/A information is prohibited in ZIT COUBERTIN.

- Commercial and leisure helicopter transits to private helipads located in ZRT JOP are prohibited, except in special cases authorized by the C3MOA.

2 - Radio or transponder failure

A VFR or OAT V aircraft with radio and/or transponder failure is considered a potential threat.

As a result, when a failure occurs and is detected :

- outside the ZRT JOP: the VFR or OAT V aircraft is not authorized to enter and must divert to an aerodrome outside the ZRT (*except emergency*)
- in ZRT JOP and ZIT COUBERTIN : VFR or OAT V aircraft continue their route in compliance with published mandatory routes.

In the event of a radio failure, the IFF code 7600 must be displayed instead of the code initially imposed in the authorization to fly.

PROCEDURE FOR ENTERING AND FLYING IN ZIT COUBERTIN AND ZRT JOP UNMANNED AIRCRAFT

The procedures for filing flight intentions are described in AIC n° 07/24.

For reasons of air safety and security, the following general restrictions apply, except in the case of exceptional dispensation by the C3MOA:

- LF-P23 : only state unmanned ACFT and those directly linked to the JOP 2024 will be authorized by the Paris Prefecture ;
- ZIT COUBERTIN : in addition to the above-mentioned unmanned ACFT, flights by professional remote pilots may be authorized, subject to approval by the C3MOA ;
- ZRT JOP : the usual procedures apply.

Note : The usual procedures for contacting the prefectures also apply in addition to the present AIP SUP procedure. If the flight takes place in the airspace of a controlled aerodrome, the usual coordination rules with ATS services remain in force.

RELEVANT AUTHORITIES CONTACT DETAILS

Before 18 July 2024 :

For any information, please contact :

Air Defense and Air Operations Command.
Brigade Aérienne de la Posture Permanente de Sécurité.
National Air Operations Center.
DPSA Division.
Base Aérienne 942 de Lyon Mont-Verdun
BP19
69579 LIMONEST CEDEX
Mail : c3moa-jo.paris.fct@def.gouv.fr
Phone : +33(0)4 87 65 57 58

From 18 July 2024 :

For any information, please contact :

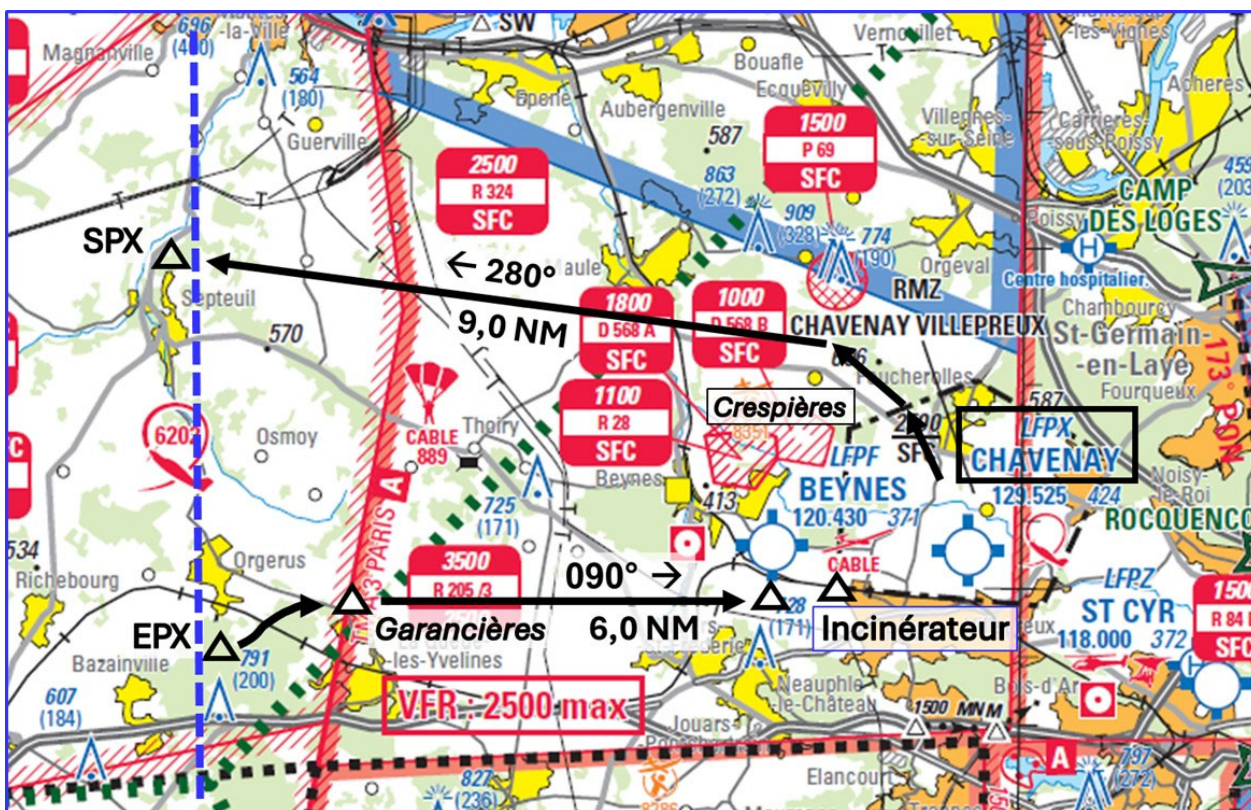
Civil-military air operations coordination center (C3MOA).
Mail : c3moa-jo.paris.fct@def.gouv.fr
Tel: +33(0)1 41 44 59 98 or +33(0)1 41 44 59 96 or + 33(0)6 16 33 92 09

APPENDIX I

VFR ENTRY - EXIT ROUTES BY AERODROME

1 - CHAVENAY (LFPX) :

CHAVENAY departure/arrival chart
Extract from the 1/250 000 aeronautical map of Paris region.



No departures or arrivals, in the absence of TWR control at Chavenay.

Exit route :

Departure from AD, exit North, West of Feucherolles, without flying over it, and East of road D568B. At Crespières, follow MAG 280° for 9 NM to the exit point.

Stay South of LF-P69 and Maule.

Exit point (SPX) : North of Septeuil.

Entry route :

Entry point (EPX) : South of Orgerus.

Fly along the North of Garancières, then follow MAG 090° for 6 NM to the South of the Beynes-Thiverval AD, staying outside the pattern circuit.

Join the Chavenay RMZ by the Incinerator sector.

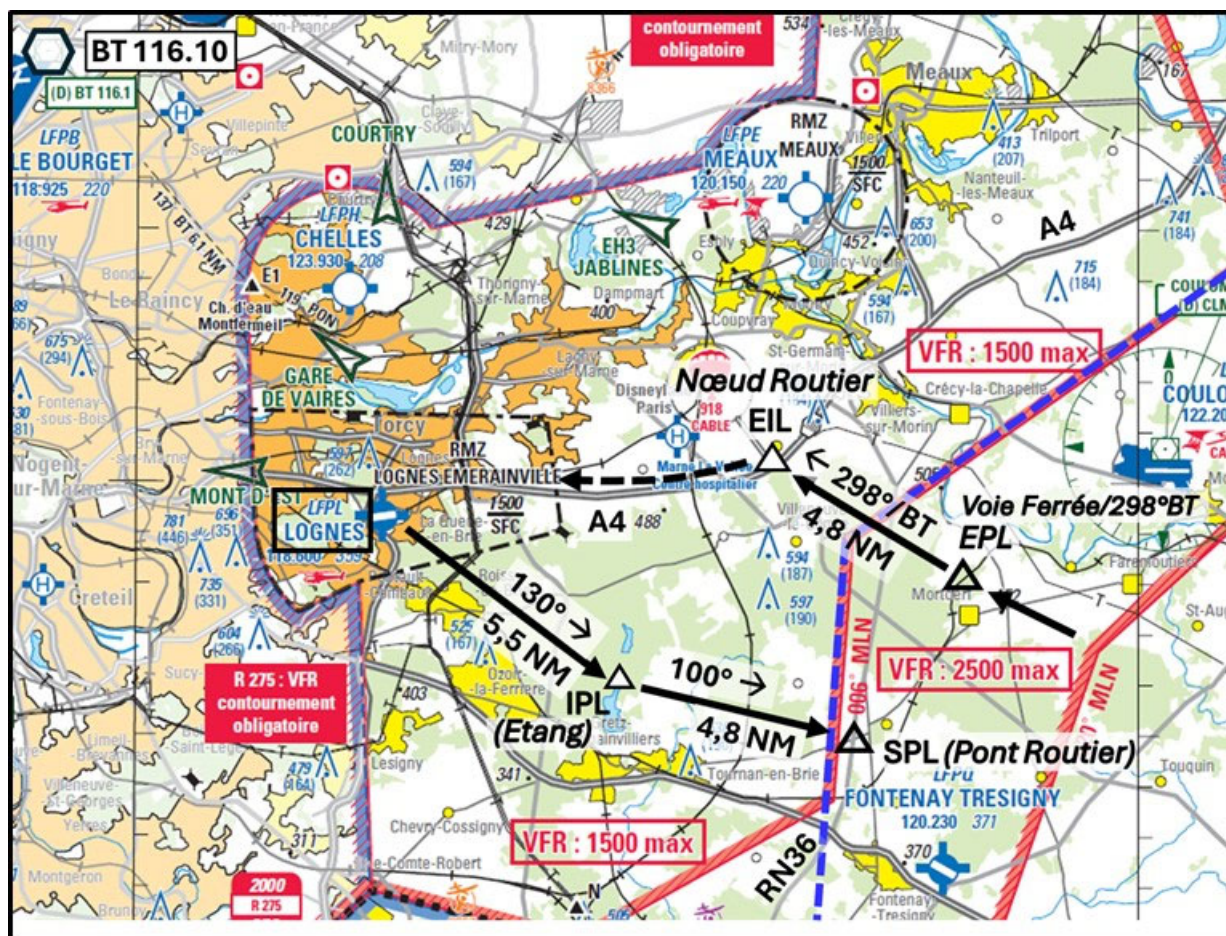
Interruption of radio communications :

1 - If **outside** the ZIT-ZRT : **do not enter** the ZRT-ZIT, squawk 7600, leave immediately for one of the alternate AD mentioned in the flight plan.

2 - If **already** in the ZIT-ZRT : squawk 7600, and **proceed** according to the last instruction received and read back.

2 - LOGNES EMERAINVILLE (LFPL) :

LOGNES departure/arrival chart
Extract from the 1/250 000 aeronautical map of Paris region.



No departures or arrivals, in the absence of TWR control at Lognes.

Exit route :

Follow MAG 130° from the threshold of runway 28, for 5.5 NM to the Gretz-Armainvilliers ponds, then MAG 100°, 4.8 NM to the SPL exit point.
Exit point (SPL) : Road bridge over RN 36.

Entry route :

Entry point (EPL) : Railway/QDM 298° BT, North of Mortcerf.
From the EPL entry point : follow QDM 298° from BT to the A4 freeway junction, then follow the A4 freeway to the AD.

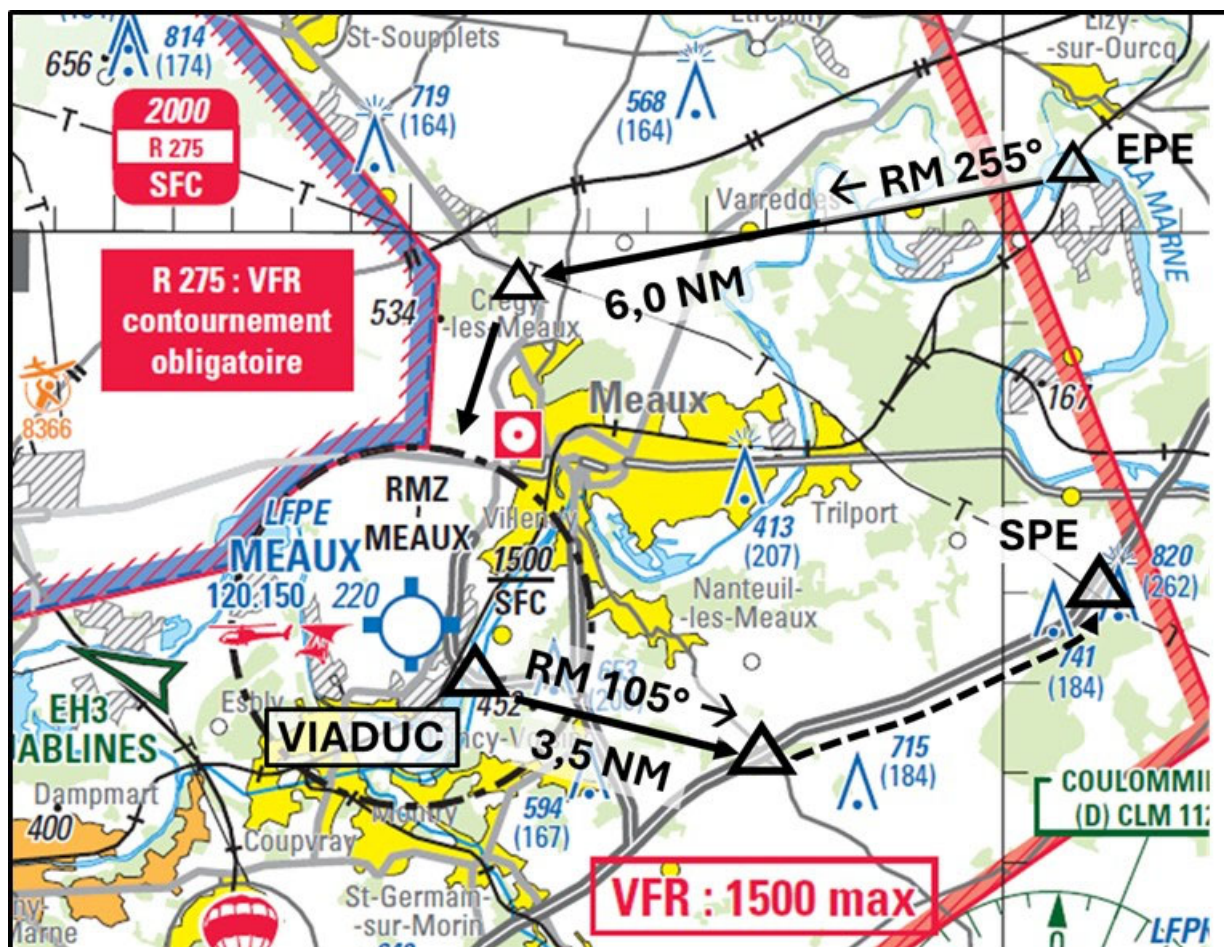
Interruption of radio communications :

- 1- If **outside** the ZIT-ZRT : do not enter the ZRT-ZIT, squawk 7600, leave immediately for one of the alternate AD mentioned in the flight plan.
- 2- If **already in** the ZIT-ZRT : squawk 7600, and **proceed** according to the last instruction received and read back.

Please note : helicopters may be flying from and to Issy-les-Moulineaux on the AD entry and exit routes. Beware of wake turbulence.

3 - MEAUX ESBLY (LFPE) :

MEaux departure/arrival chart
Extract from the 1/250 000 aeronautical map of Paris region.



Exit route :

Leave the circuit via Viaduc A 140 / Canal de Meaux.

Follow MAG 105° for 3.5 NM until you intercept the A4 freeway, avoiding all built-up areas. Fly along the right of the A4 freeway for 4 NM to the exit point.

Exit point (SPE) : High-voltage line crossing the A4 freeway.

Entry route :

Entry point (EPE) : SNCF bridge over the Marne, south of Lizy-sur-Ourcq. Follow MAG 255° for 6 NM to North of Crégy-lès-Meaux.

Head towards Meaux-Esbly AD.

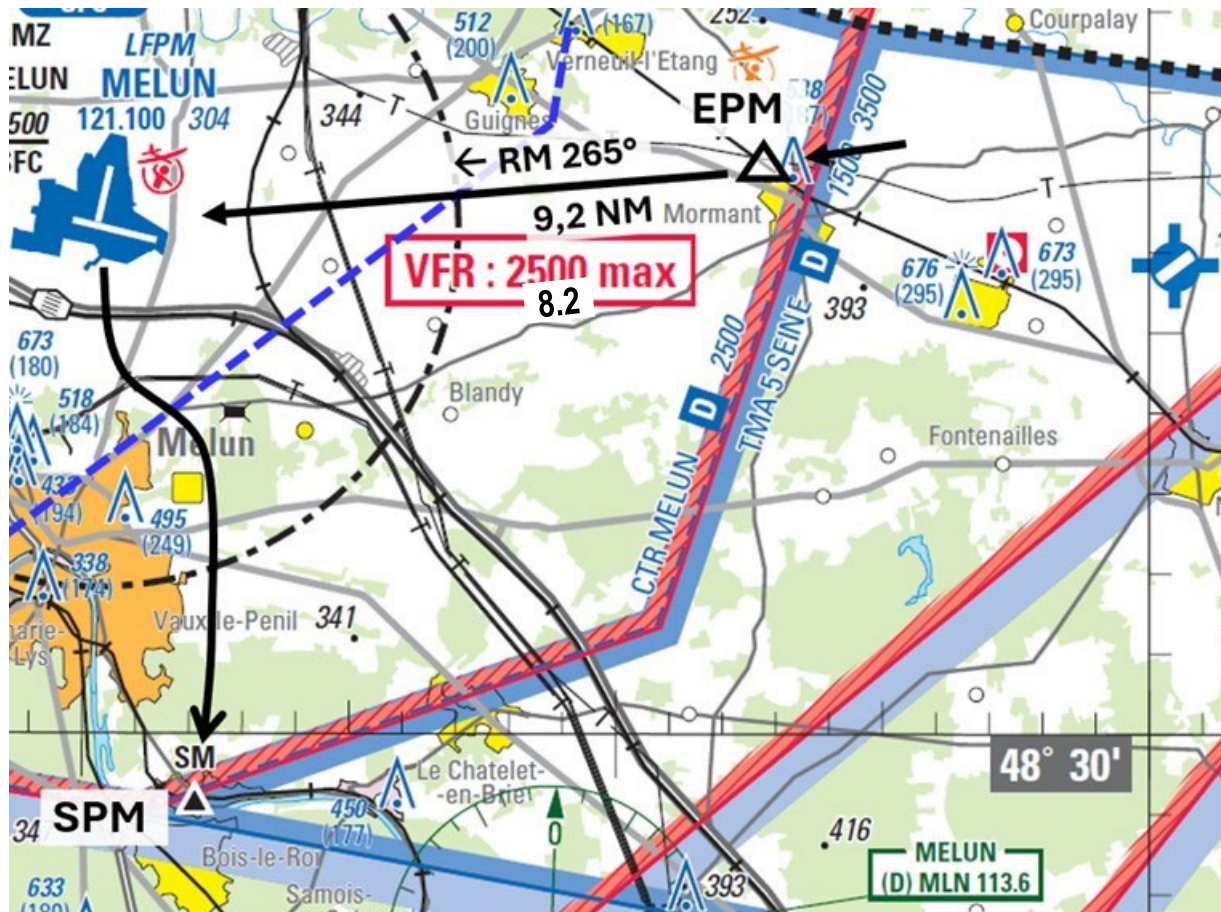
Interruption of radio communications :

1 - If **outside** the ZIT-ZRT : **do not enter** the ZRT-ZIT, squawk 7600, leave immediately for one of the alternate AD mentioned in the flight plan.

2 - If **already in** the ZIT-ZRT : squawk 7600, and **proceed** according to the last instruction received and read back.

4 - MELUN VILLAROCHE (LFPM) :

MELUN departure/arrival chart
Extract from the 1/250 000 aeronautical map of Paris region.

Exit route :

Exit point (SM) : SM Chartrettes, avoiding overflying the town of Melun and the Château of Vaux-le-Vicomte.

Entry route :

Entry point (EPM) : Mormant - NW industrial area.

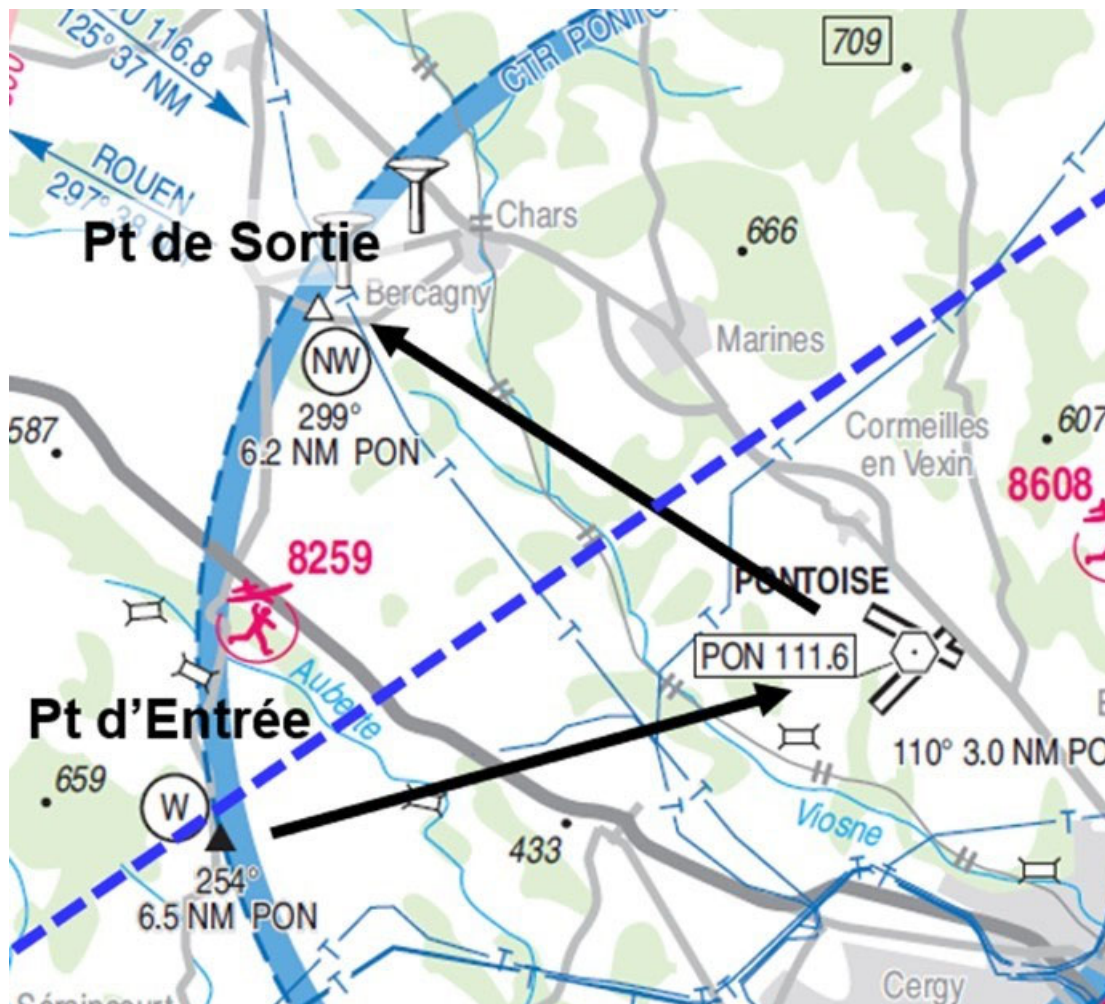
Follow MAG 265°, for 8.2 NM, towards aerodrome.

Interruption of radio communications :

- 1 - If **outside** the ZIT-ZRT : **do not enter** the ZRT-ZIT, squawk 7600, leave immediately for one of the alternate AD mentioned in the flight plan.
- 2 - If **already in** the ZIT-ZRT : squawk 7600, and **proceed** according to the last instruction received and read back.

5 - PONTOISE (LFPT) :

PONTOISE departure/arrival chart
Extract from the VAC chart.

Exit route :

Exit point (NW): Bercagny water tower at 1500 ft AMSL MAX.

Entry route :

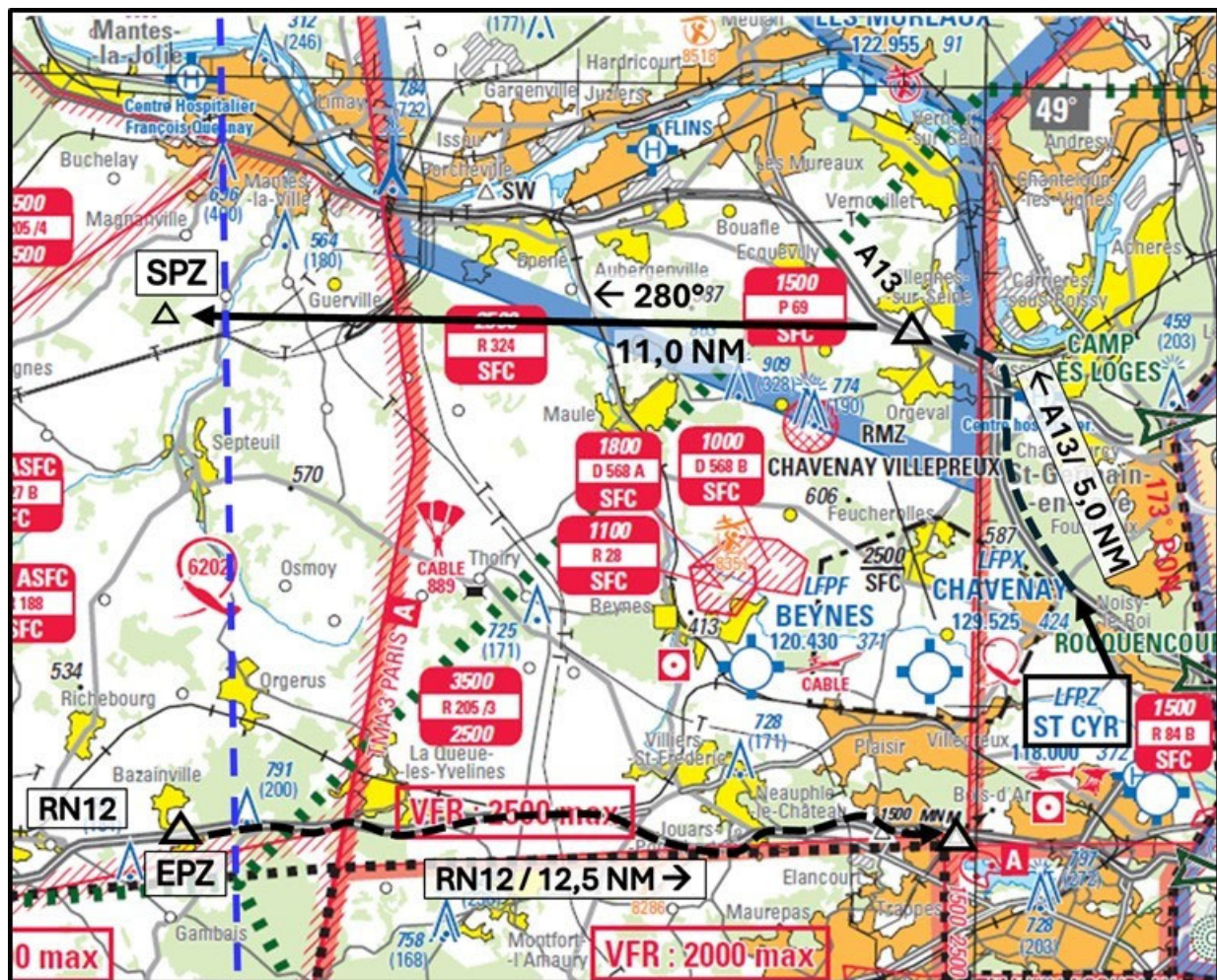
Entry point (W): Frémainville distillery at 1500 ft AMSL MAX then DCT LFPT AD.

Interruption of radio communications :

- 1 - If **outside the** ZIT-ZRT : **do not enter** the ZRT-ZIT, squawk 7600, leave immediately for one of the alternate AD mentioned in the flight plan.
- 2 - If **already in** the ZIT-ZRT : squawk 7600, and **proceed** according to the last instruction received and read back.

6 - SAINT CYR (LFPZ) :

SAINT-CYR departure/arrival chart
Extract from the 1/250 000 aeronautical map of Paris region.



No departures or arrivals, in the absence of TWR control at Saint-Cyr.

Exit route : North AD exit.

Follow the A13 freeway to the North of Orgeval.

Take MAG 270° for 11 NM to exit point. Exit point (SPZ) : South of Mantes-la-Jolie.

Entry route :

Entry point (EPZ) : RN 12 abeam Bazainville.

Follow the RN12 road to the South of La-Queue-les-Yvelines and Neauphle-le-Château. Integration via the western arrival route.

Warning :

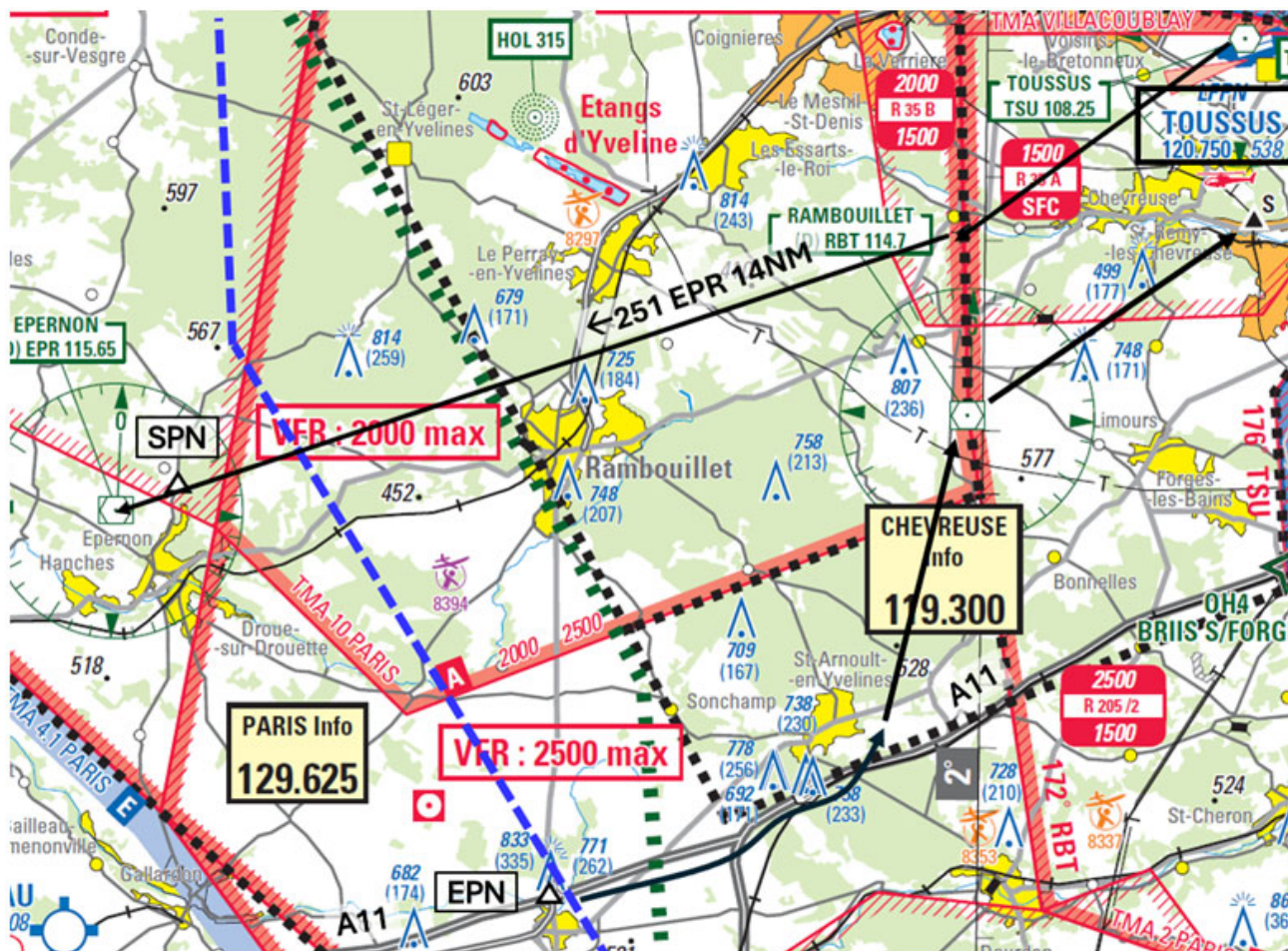
- helicopters may be flying to/from Issy-les-Moulineaux on entry and exit routes of the AD. Beware of wake turbulence.
- for radio range reasons, it is recommended that aircraft arrive at least at 2200 ft at the route entry.

Interruption of radio communications :

- 1 - If **outside** the ZIT-ZRT : **do not enter** the ZRT-ZIT, squawk 7600, leave immediately for one of the alternate AD mentioned in the flight plan.
- 2 - If **already in** the ZIT-ZRT : squawk 7600, and **proceed** according to the last instruction received and read back.

7 - **PARIS-SACLAY-VERSAILLES (EX TOUSSUS-LE-NOBLE) (LFNP) :**

PARIS-SACLAY-VERSAILLES departure/arrival chart
Extract from the 1/250 000 aeronautical map of Paris region.



No departures or arrivals, in the absence of TWR control at Paris-Saclay-Versailles (ex Toussus-le-Noble).

Exit route :

Exit South Dampierre then DCT VOR EPR (MAG 251° for 14 NM) passing between Le Perray-en-Yvelines and Rambouillet.

Exit point (SPN) : North of Epéron city.

Entry route :

Entry point (EPN) : A11 freeway North of Ablis.

Follow the A11 then A10 freeways until you pass Saint-Arnoult-en-Yvelines, then turn left DCT RBT then Sierra.

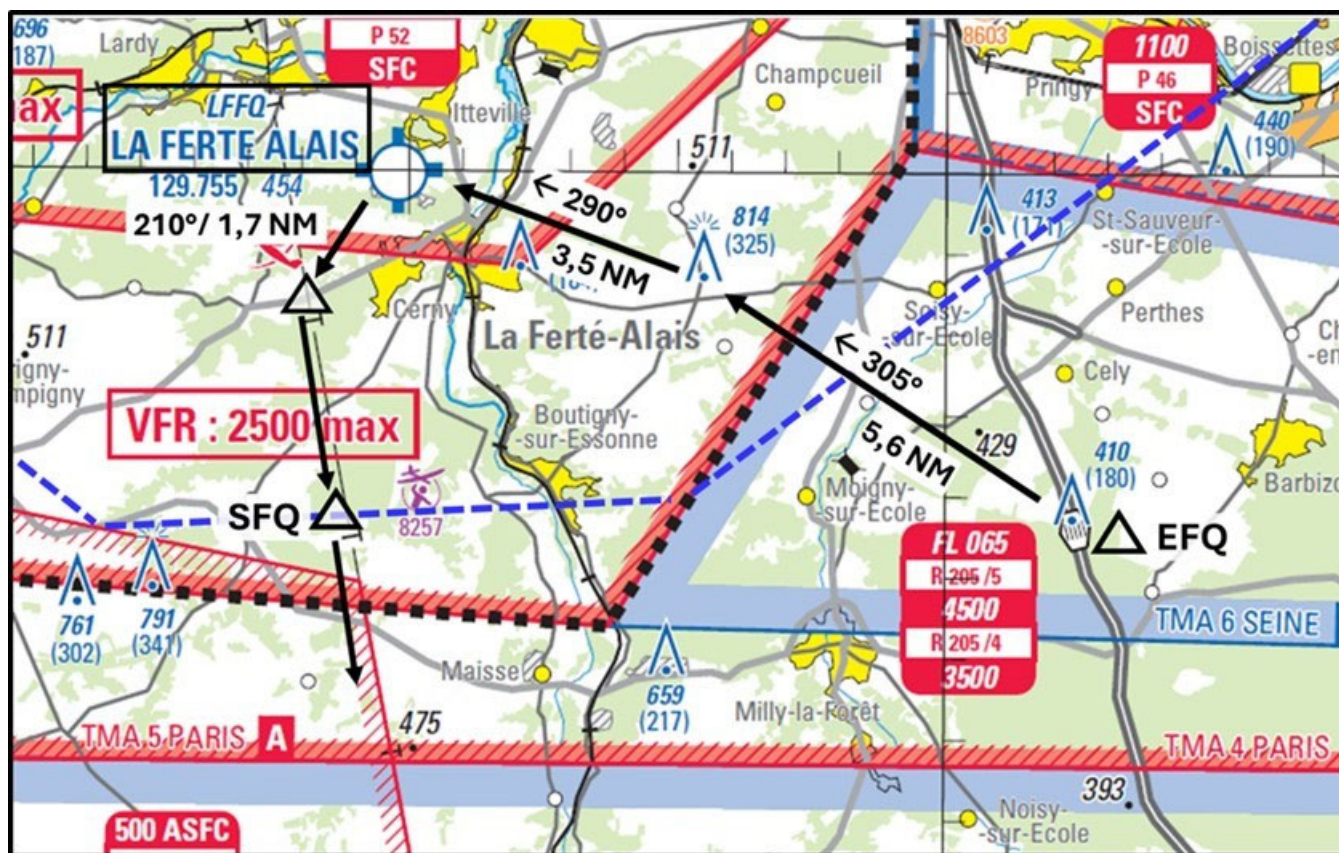
On the entry and exit routes, comply with the speed limit imposed in area LF-R 35 : MAX (1.45 Vs, 100 kts). (Vs : stall speed).

Interruption of radio communications :

- 1 - If **outside** the ZIT-ZRT : **do not enter** the ZRT-ZIT, squawk 7600, leave immediately for one of the alternate AD mentioned in the flight plan.
- 2 - If **already in** the ZIT-ZRT : squawk 7600, and **proceed** according to the last instruction received and read back.

8 - LA FERTE-ALAIS (LFFQ) :

LA FERTE-ALAIS departure/arrival chart
Extract from the 1/250 000 aeronautical map of Paris region.

Exit route :

On taking off from the AD, follow MAG 210° for 1.7 NM to reach and follow the high-voltage line heading South to join the exit point.

Exit point (SFQ) : West of Boutigny-sur-Essonne.

Entry route :

Entry point (EFQ) : Fleury-en-Bière toll station on the A6 freeway.

From the entry point, follow MAG 305° for 5.6 NM to the relay antenna (la Bougie), passing between Moigny-sur-Ecole and Soisy-sur-Ecole.

From the relay antenna, follow MAG 290° for 3.5 NM towards the Cerny La Ferté-Alais AD. Do not fly over La Ferté-Alais (to the South) and Itteville (to the North).

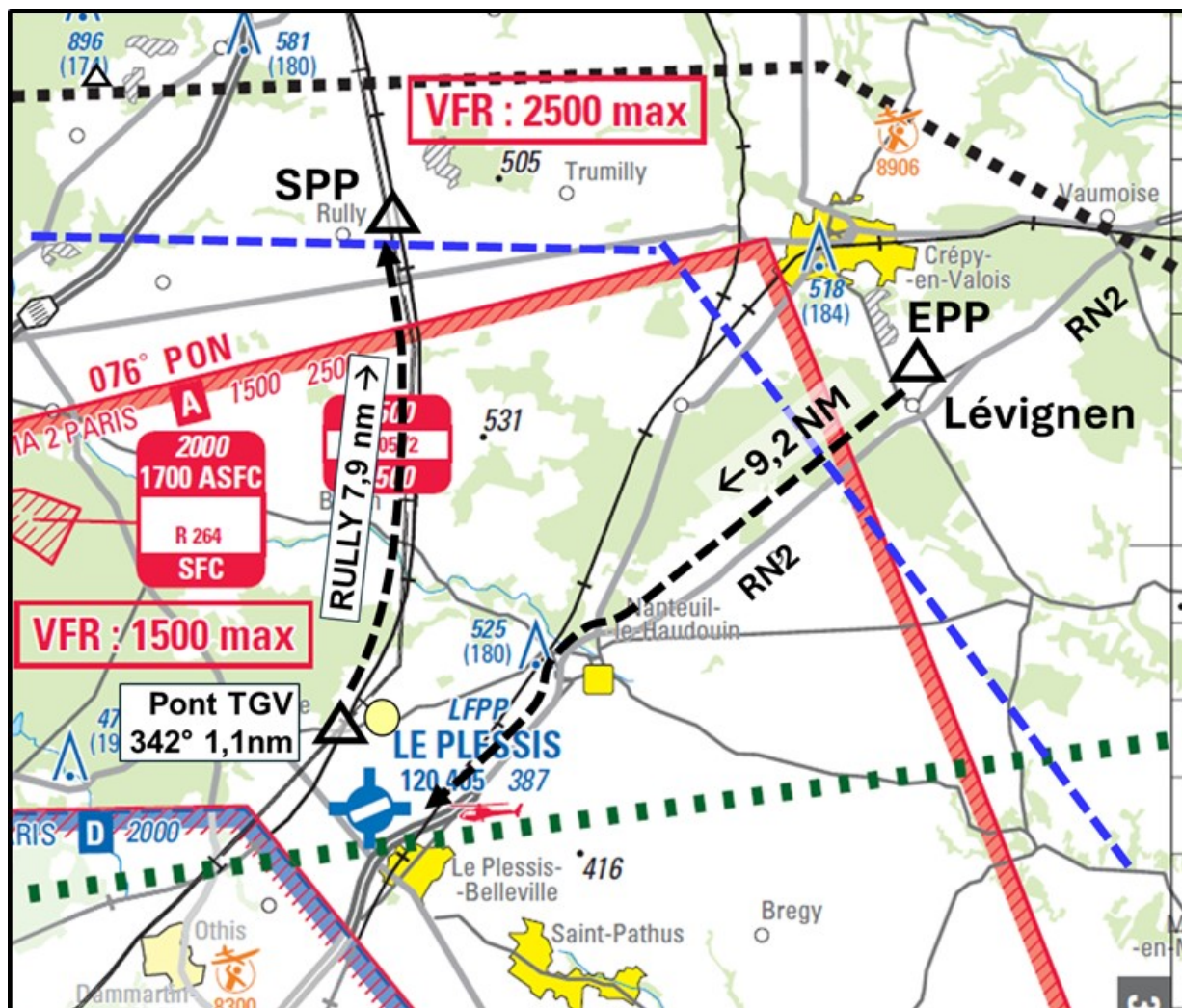
Interruption of radio communications :

1 - If **outside** the ZIT-ZRT : **do not enter** the ZRT-ZIT, squawk 7600, leave immediately for one of the alternate AD mentioned in the flight plan.

2 - If **already in** the ZIT-ZRT : squawk 7600, and **proceed** according to the last instruction received and read back.

9 - LE PLESSIS BELLEVILLE (LFPP) :

LE PLESSIS-BELLEVILLE departure/arrival chart
Extract from the 1/250 000 aeronautical map of Paris region.

Exit route :

On take-off from Plessis-Belleville aerodrome, join the TGV bridge located 342° / 1.1 NM from AD, then head North, avoiding Montagny Ste-Félicité, flying along the TGV line, leaving it on the right-hand side of the aircraft, to the SPP exit point at 7.9 NM.

Exit point (SPP) : railway / East of Rully.

Entry route :

Entry point (EPP) : North of Lévignen, South of Crépy-en-Valois (sandpit).

North of Lévignen, join and follow RN2 road heading South-West to join Le Plessis Belleville airfield.

Leave RN2 on the left side of the aircraft.

Go round Nanteuil-le-Haudouin to the North, then take a heading for the Plessis Belleville airfield.

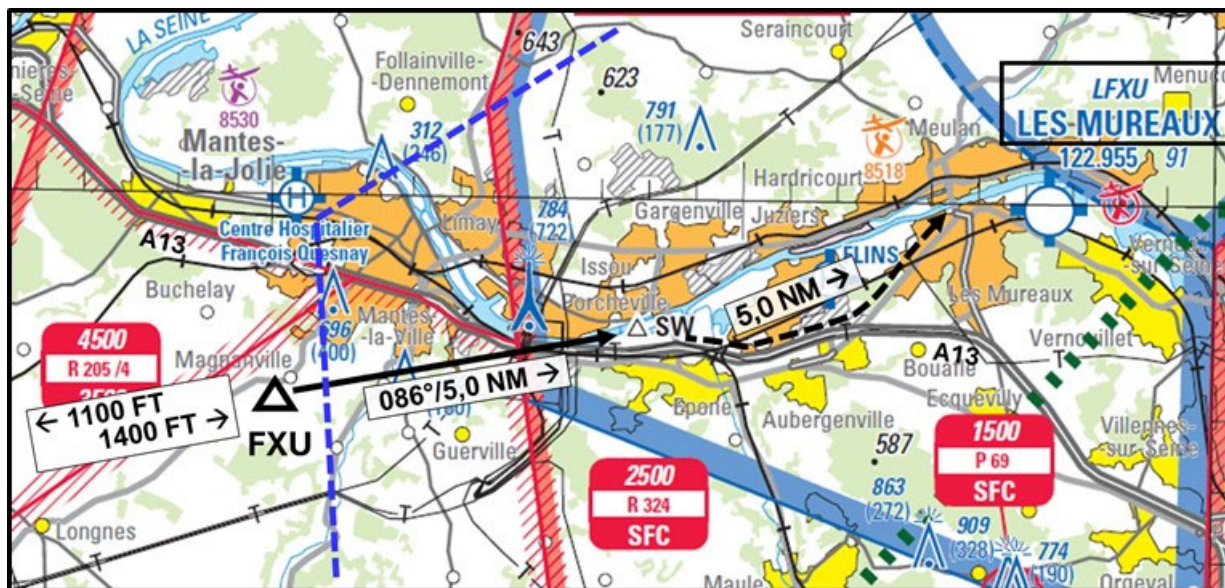
Interruption of radio communications :

1 - If **outside** the ZIT-ZRT : **do not enter** the ZRT-ZIT, squawk 7600, leave immediately for one of the alternate AD mentioned in the flight plan.

2 - If **already in** the ZIT-ZRT : squawk 7600, and **proceed** according to the last instruction received and read back.

10 - LES MUREAUX (LFXU) :

LES MUREAUX departure/arrival chart
Extract from the 1/250 000 aeronautical map of Paris region.



Exit route :

Altitude : 1100 ft AMSL

On leaving the circuit, follow the A13 freeway heading West. Change frequency at Flins car factory.

Abeam North EPONE (SW point of Pontoise aerodrome), take MAG 266° for 5.0 NM to exit point, staying South of Mantes-la-Ville.

Exit point (FXU) : Magnanville, South of Mantes-la-Jolie.

Entry route :

Altitude : 1400 ft AMSL

Entry point (FXU) : Magnanville, South of Mantes-la-Jolie.

Follow MAG 086° for 5.0 NM to North of EPONE (SW point of Pontoise AD), staying South of Mantes-la-Ville.

Follow the A13 freeway to the AD circuit.

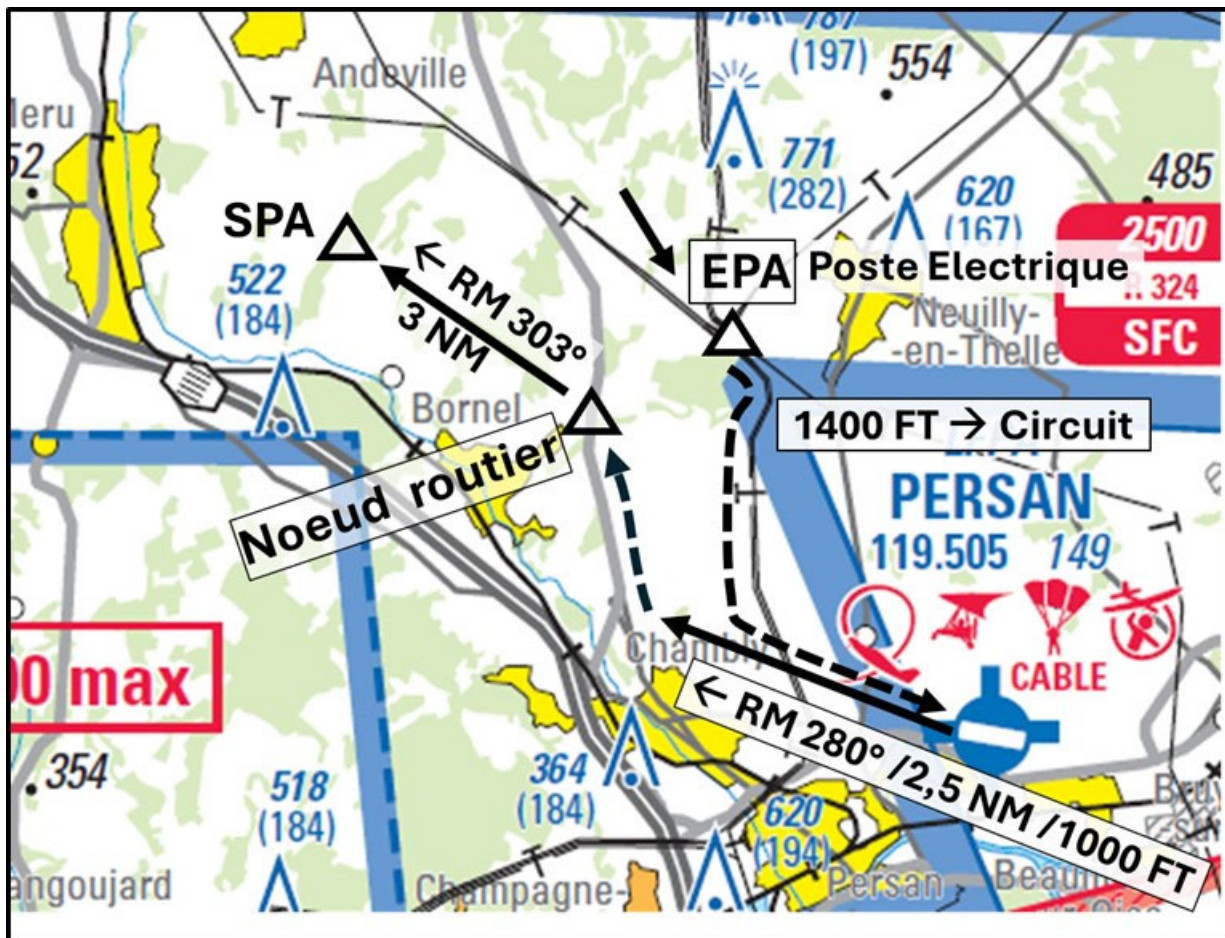
Interruption of radio communications :

1 - If **outside** the ZIT-ZRT : **do not enter** the ZRT-ZIT, squawk 7600, leave immediately for one of the alternate AD mentioned in the flight plan.

2 - If **already** in the ZIT-ZRT : squawk 7600, and **proceed** according to the last instruction received and read back.

11 - **PERSAN BEAUMONT (LFPA) :**

PERSAN-BEAUMONT departure/arrival chart
Extract from the 1/250 000 aeronautical map of Paris region.

Exit route :

Maximum altitude 1000 ft AMSL, free altitude after leaving the conflict zone (Chambly).

Warning : Up to Chambly, aircraft arriving at the aerodrome on opposite route at 1500 ft AMSL may be present.

On take-off from Persan Beaumont AD, follow MAG 280° for 2.5 NM to join the D1001 road North of Chambly and follow it northwards to a road junction abeam North-East of Bornel.

Then take MAG 303° for 3 NM to the exit point.

Warning : do not join, cross or follow the A16 freeway before Méru, as this route is used by aircraft for entry and exit of the Enghien-Moisselles AD.

Exit point (SPA) : North of Bornel.

Possible presence of helicopters leaving Le Bourget on the route : beware of wake turbulence.

Entry route :

Altitude 1400 ft until integration into the runway circuit.

Entry point (EPA) : RTE substation (Terrier electric substation) West of Neuilly-en-Thelle.

Follow the high-voltage power line heading South, leaving it on the aircraft's left, until you reach Chambly, then head for Persan Beaumont AD.

Warning : from Chambly, aircraft departing from the AD may fly on opposite route at 1000 ft AMSL.

Possible presence of helicopters bound for le Bourget on the route : beware of wake turbulence.

Interruption of radio communications :

1 - If **outside** the ZIT-ZRT : **do not enter** the ZRT-ZIT, squawk 7600, leave immediately for one of the alternate AD mentioned in the flight plan.

2 - If **already in** the ZIT-ZRT : squawk 7600, and **proceed** according to the last instruction received and read back.

12 - HELICOPTER ROUTES :

ROC (exit only) : follow the A13 freeway, then exit according to Saint-Cyr AD exit route.

MTE : take the A4 freeway to LFPL, then exit according to Lognes AD exit route.

OH3 : follow the A5A freeway to South of LFPM, then exit according to Melun AD exit route.

OH4 : follow the high-voltage line to the ZRT exit south of Dourdan.

WH1 (entry only) : from EPZ entry point, follow N12 road to WH1 then follow deviation route WH2 - WH3 - IH2 - LFPI.

LFPB : from IH3, BERCY - IH4 - BH9 - BH8 - BH1 DCT.

from MTE, NOGENT - BH9 - BH8 - BH1 DCT.

PH3 : go around Luzarches to the East, then turn to Persan Beaumont, then take the Persan Beaumont exit route.

13 – MILITARY ONLY HELICOPTER ROUTES :

Brétigny - OH2 (joins Orly) :

Follow the D19 road, then the D445 road until you reach the Seine, then follow the Seine to OH2.

Brétigny - OH4 (joins OH4) :

Join and follow the N104 national road heading West until it joins the A10 freeway. Follow A10 freeway southwards to reach OH4.

Brétigny <-> "ZRT SE" point :

Entry/exit point : A6 / N 37 junction.

At the roundabout on the D31 departmental road in the immediate vicinity of the non-hazardous waste storage centre (Groupe Semardel), follow MAG 158°/ 2.6 NM to the Ballancourt-sur-Essonne northern roundabout on the D 191 road.

From the roundabout, take and follow MAG 107°/ 5.1 NM to join the A6 freeway, staying to the North of Champcueil, Loutteville and Nainville-les-Roches.

Then follow the A6 freeway to the A6 / N37 junction.

Brétigny <-> "ZRT SO" point :

Entry/exit point : star roundabout between roads D 191, D 836, D 821 and D 201.

Join and follow the D19 road heading South.

At the junction with the N20, follow the N20 until you pass the town of Mauchamps (West of the N20 and the sandpit).

Take and follow MAG 230°/ 2.3 NM until you reach the North of Chauffour-lès-Etréchy.

Then take and follow MAG 212°/4.2 NM to reach the star roundabout between roads D 191, D 836, D 821 and D 201.