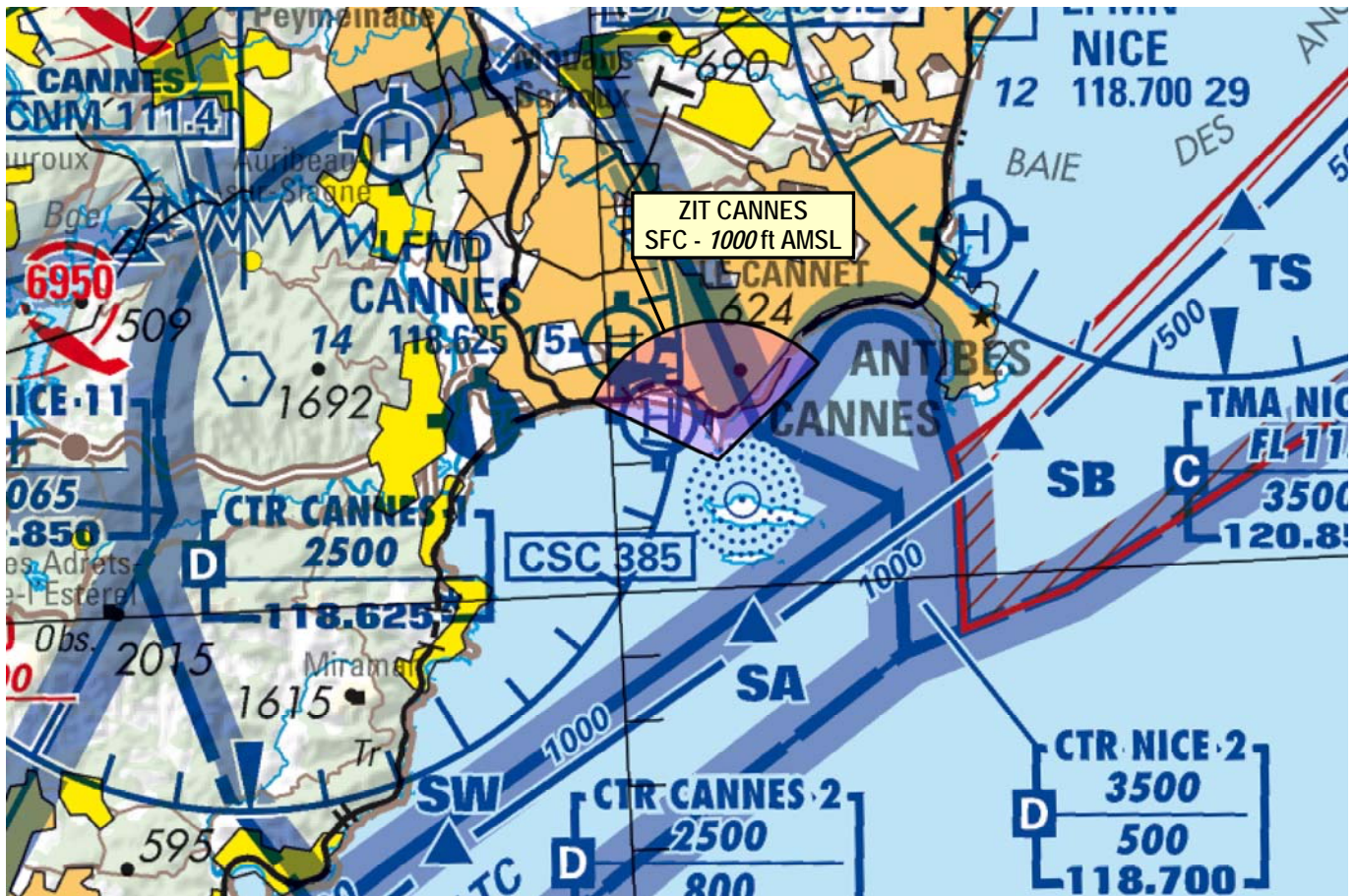


ENR - FIR Marseille - LFMM
Subject : AD - Cannes - LFMD
HEL - Quai du Large - LFTL
Creation of a Temporary Prohibited Area (ZIT) above the city of Cannes.

With effect : From 16 to 28 May 2023

Location : FIR : Marseille LFMM - AD : Cannes LFMD - HEL : Quai du Large LFTL



ACTIVITY

In order to maintain public safety during the Cannes International Film Festival, a temporary prohibited area identified as "ZIT Cannes" has been created in Cannes (Alpes-Maritimes).

DATES AND TIMES OF ACTIVITY

Active from 16 May 2023 0500 UTC to 28 May 2023 0500 UTC.

USERS INFORMATION

Actual activity information provided by :
CANNES TWR : 118.625 MHZ
LERINS TWR : 120.780 MHZ
NICE INFO : 120.850 MHZ
LFTL COM : 131.755MHZ

MANAGING AUTHORITY

SNA-SE

STATUS

Temporary Prohibited Area (ZIT) coexisting with the portions of controlled airspaces with which it overlaps.

ENTRY CONDITIONS**ZIT CANNES :****GAT/OAT :** entry prohibited for any ACFT, including unmanned ACFT, except :

- French ACFT of the defense, customs, police and gendarmerie, civil security or rescue during their missions, when avoidance is not compatible.
- ACFT carrying out EVASAN missions.
- HEL to and from Quai du Large heliport, with PPR from HELIPARTNER. Specific flight security measures might be taken by public authority.
- ACFT accredited by the Alpes-Maritimes Préfecture.

SERVICES PROVIDED

Within ZIT, the usual ATC units provide air traffic services in accordance with the airspace classes with which this area coexists.

LATERAL AND VERTICAL LIMITS**ZIT CANNES****Lateral Limits :**

43°32'00.00" N, 007°02'15.00" E
 43°33'00.66" N, 006°59'37.55" E
 Clockwise thence of 4000 m radius centered on 43°32'00.00" N, 007°02'15.00" E
 43°33'23.99" N, 007°04'30.71" E
 43°32'00.00" N, 007°02'15.00" E

Vertical Limits :

SFC / 1000 ft AMSL

SPECIAL PROVISIONS

NIL

RELEVANT AUTHORITIES CONTACT DETAILS

SNA-SE

For all take-off or landing requests at Cannes heliport : HELIPARTNER : cannes-helistation@helipartner.com / +33(0)6 84 47 65 93