



**Subject : Creation of 29 Temporary Restricted Areas (ZRT) for exercise ORION 2023 / Phase O4 in FIR LFEE and LFFF**

**With effect : From 17 April 2023 to 04 May 2023**

Location : UIR France, FIR : Reims LFEE, Paris LFFF.

AD : Brienne le Château LFFN, Chambley LFJY, Prunay LFQA, Bar Le Duc les Hauts de Chée LFEU, Chaumont Semoutiers LFJA, Joinville Mussey LFFJ, Nancy Malzéville LFEZ, Neufchâteau LFFT, Vitry Le François Vauclerc LFSK, Chalons Ecury sur Coole LFQK, Chalons Vatry LFOK, Juvancourt LFQX, Saint-Dizier Robinson LFSI, Nancy Ochey LFSO, Rethel Perthes LFAP, Epervain Plivot LFSW, Doncourt Les Conflans LFGR, Etain Rouvres LFQE, Villerupt LFAW, Metz Nancy Lorraine LFJL, Nancy Essey LFSN, Nancy Ochey LFSO, Pont Saint-Vincent LFSV.

**The ORION 2023 / Phase O4 exercise is covered by 2 complementary AIP SUPs, each covering a given geographical area. This AIP SUP describes the north-east part of the exercise and describes areas created in LFFF and LFEE FIRs.**

A second SUP AIP describes the southern and central part of the exercise and covers the areas created in FIR LFMM, LFRR and LFBB.

**The additional provisions group together the permanent airspaces activated in addition to the ZRT described into this AIP SUP.**

**With the exception of the start and end dates of its validity, any additional information or any modification of the SUP AIP will be published by modifying only the accompanying NOTAM.**

**All activations of the ZRTs described as "active" or "activatable" in this SUP AIP will be published via a summary NOTAM on D-1.**

#### ACTIVITY

National combined and joint exercise involving a large number of army aircraft operating in CAM, unmanned army aircraft on board, in all flight conditions and at all altitudes, and parachuting activities with infiltration under sail, day and night in all flight conditions and at all altitudes requiring the creation of temporary restricted areas.

#### STATUS

Temporary Restricted Area (ZRT) replacing the portions of airspace and Restricted Areas with which they overlap.

#### SERVICES PROVIDED

**OAT** : Control, flight information and alert services are provided in the ZRTs by the manager.

**GAT** : In the parts of the ZRTs coexisting with controlled airspace, the usual control organizations provide users authorized to enter with air traffic services in accordance with the class of controlled airspace mentioned above.

**ENTRY CONDITIONS**

**GAT / OAT**, compulsory avoidance except for :

- Unmanned aircraft
- ACFT in OAT after agreement of DIREX,
- ACFT conducting assistance, rescue or public safety missions, when the avoidance is not compatible with these missions after contact and agreement of DIREX (Director of exercise),
- ACFT in GAT / OAT on notification to transit on AWY M163 at FL110 and 120 when their performance does not allow them to reach FL155 before entering ZRT Vouziers.

**All sports and recreational air activities located inside the ZRTs are suspended during the activation slots.**

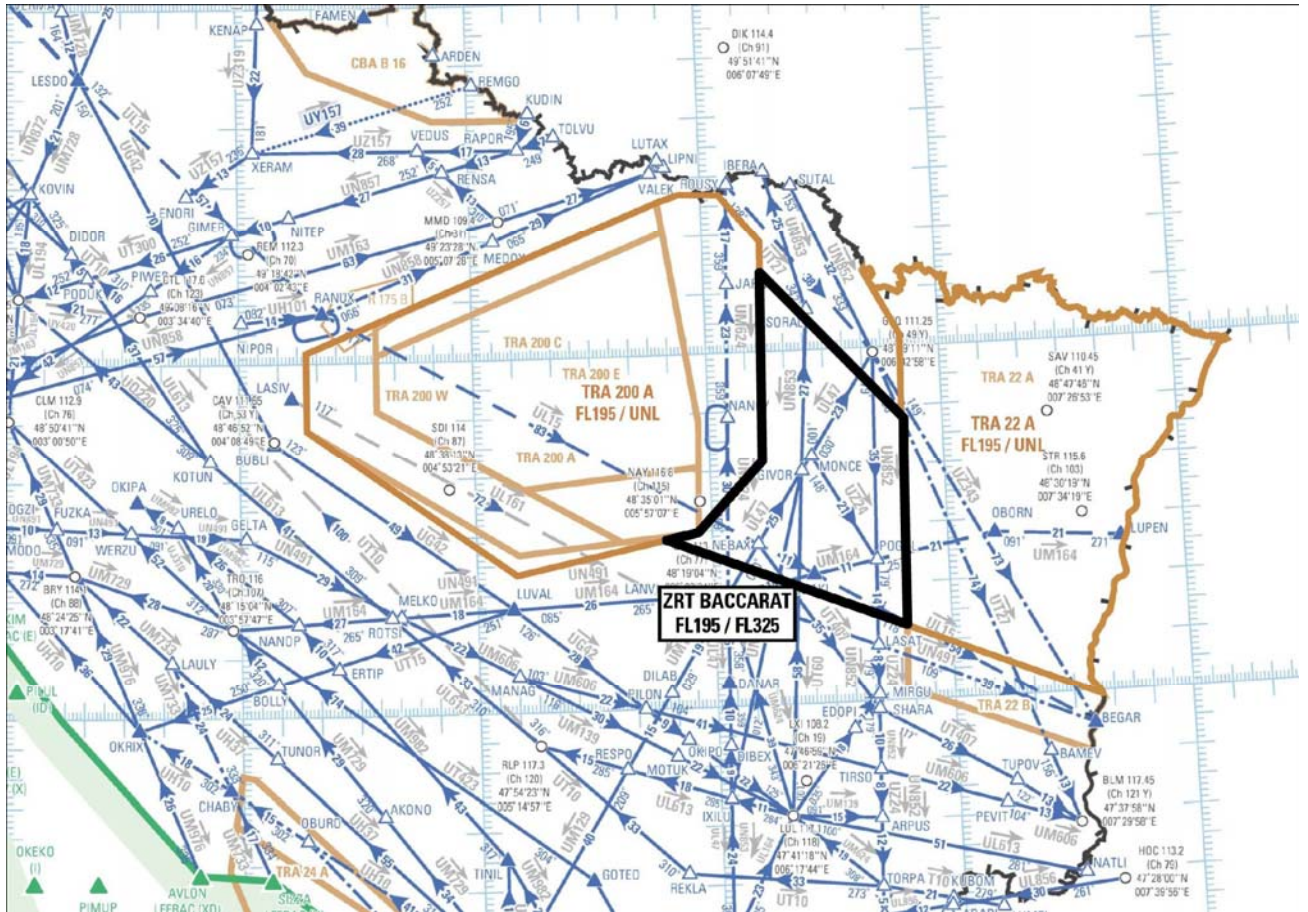
**Users are invited to read the modified or additional NOTAMs published on a daily basis.**

**All ZRT activations (defined as active or activatable in this SUP AIP) will be confirmed by NOTAM on D-1.**

The ORION Exercise zones in the NORTH-EAST region will be activated according to 2 configurations : ORION ALPHA and BRAVO described below.

**ALPHA CONFIGURATION**

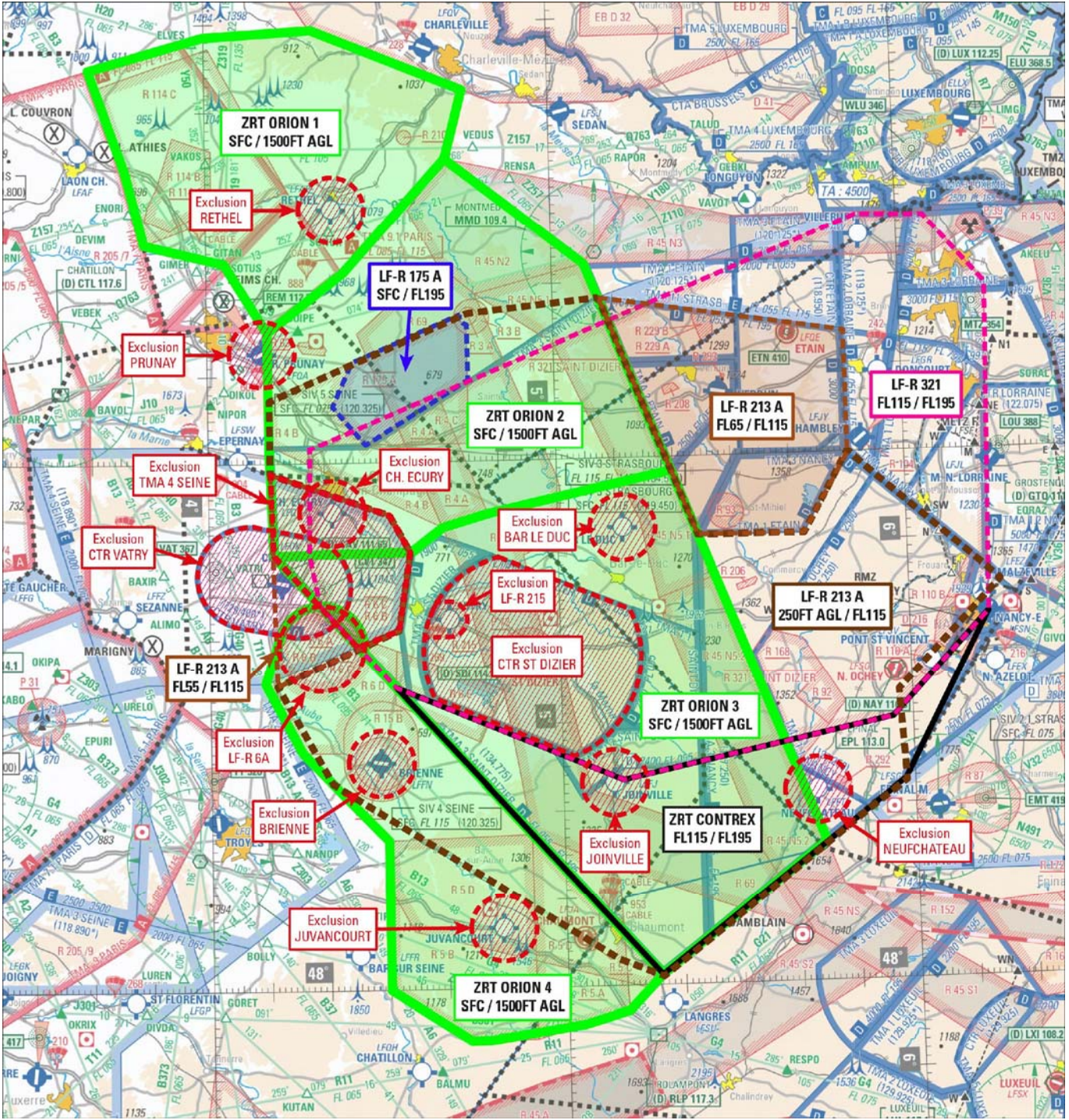
Upper space : ZRT BACCARAT



Extract cruise chart ENR 6.2 1 - 2023 Edition

ALPHA CONFIGURATION

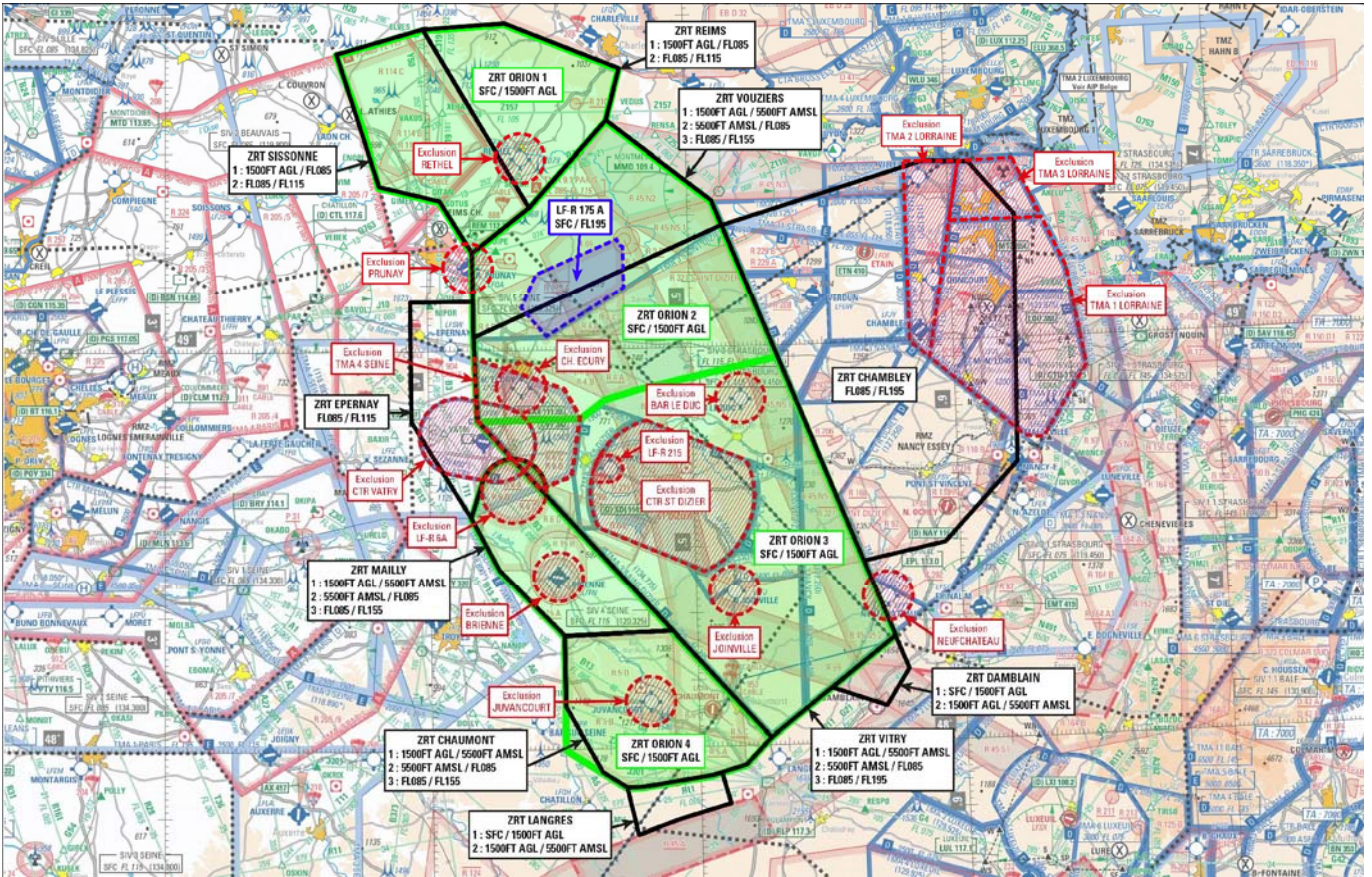
Lower space (SFC/FL195) : ZRT CONTREX and ZRT VOSGES



Extract SIA chart at 1 / 1 000 000 - 2022 edition

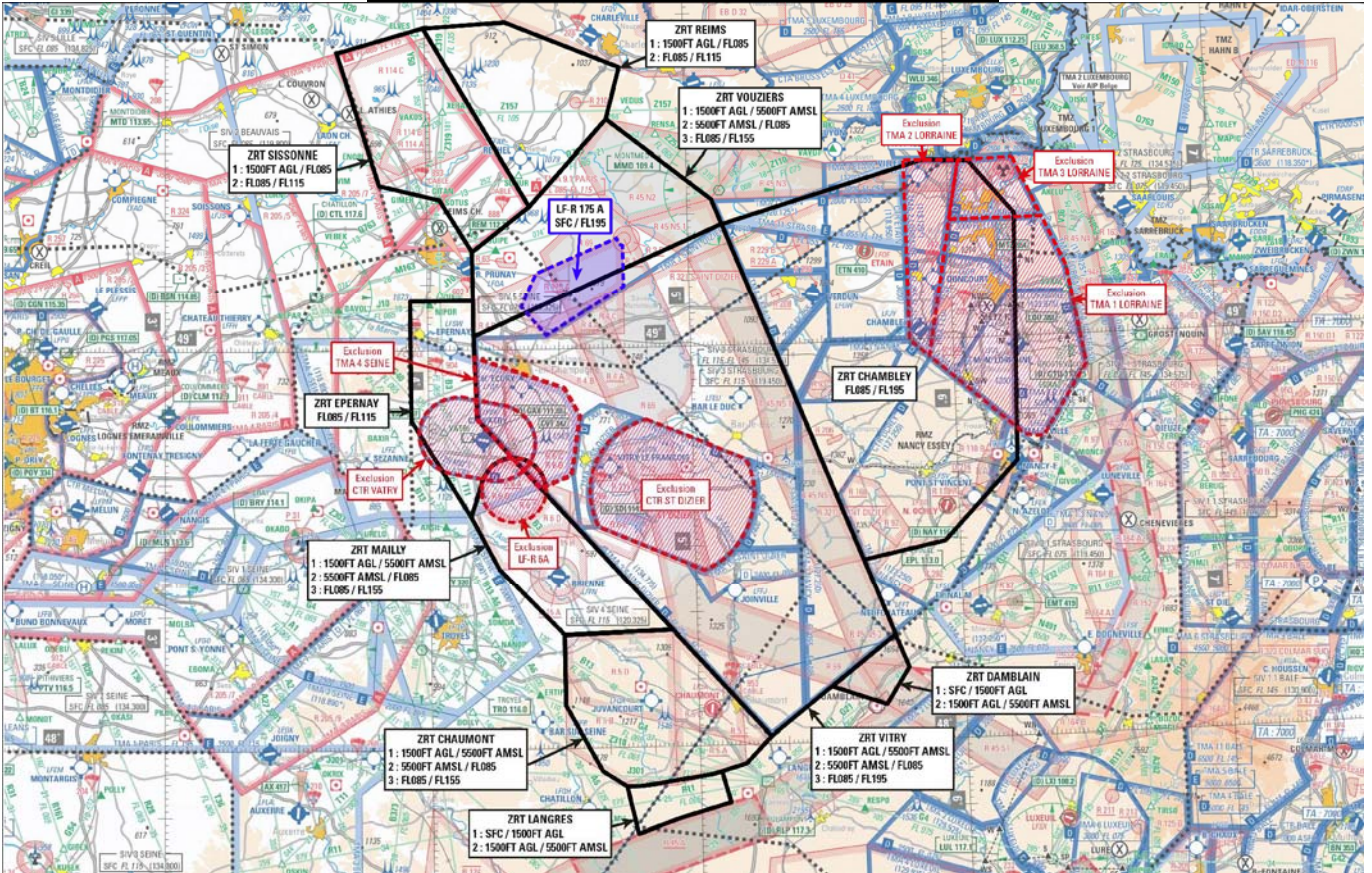
**BRAVO CONFIGURATION**

Lower space : Global view (<FL195)



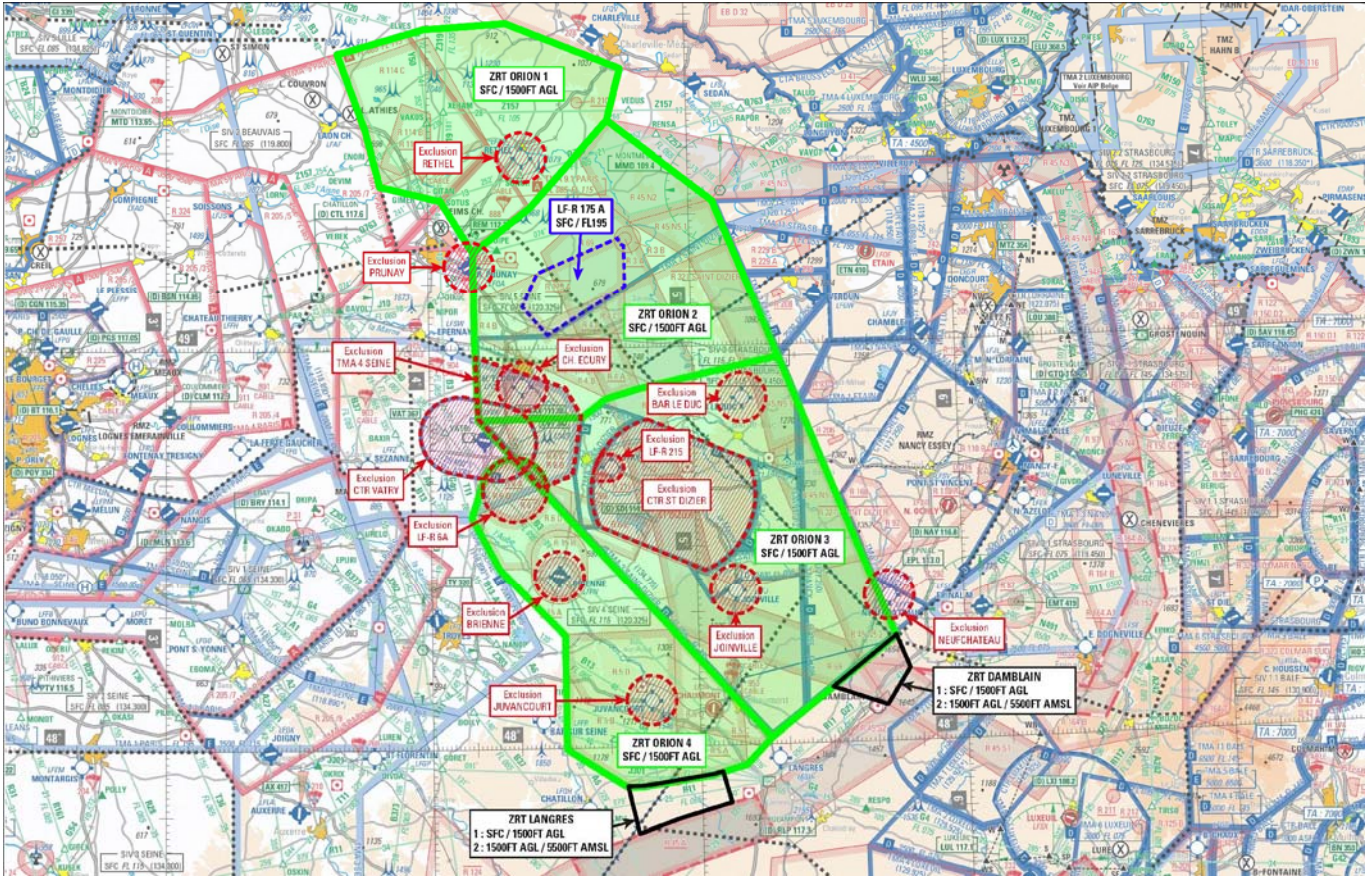
Extract SIA chart at 1 / 1 000 000 - 2022 edition

**Lower space – Low and Medium Altitude View (1500 ft AGL / FL195)**



Extract SIA chart at 1 / 1 000 000 - 2022 edition

Lower space – Very Low Altitude View (< 1500 ft AGL)



Extract SIA chart at 1 / 1 000 000 - 2022 edition

LATERAL AND VERTICAL LIMITS - ALPHA CONFIGURATION

ZRT BACCARAT	ZRT CONTREX	ZRT VOSGES
<p><b>Lateral limits</b></p> <p>49°13'19" N, 006°14'47" E                      48°47'48" N, 006°50'04" E                      48°12'46" N, 006°48'32" E                      48°28'38" N, 005°48'24" E                      48°29'44" N, 005°56'32" E                      48°41'26" N, 006°13'30" E                      49°13'19" N, 006°14'47" E</p> <p><b>Vertical limits</b>                      FL195/ FL325</p>	<p><b>Lateral limits</b></p> <p>48°01'09" N, 005°15'57" E                      48°34'23" N, 004°31'42" E                      48°23'22" N, 005°10'09" E                      48°29'44" N, 005°56'32" E                      48°41'26" N, 006°13'30" E                      48°22'40" N, 005°58'20" E                      48°01'09" N, 005°15'57" E</p> <p><b>Vertical limits</b>                      FL115/ FL195</p>	<p><b>Lateral limits</b></p> <p>49°07'30" N, 007°09'02" E                      frontière franco-allemande                      47°58'20" N, 007°37'19" E                      48°12'46" N, 006°48'32" E                      48°47'48" N, 006°50'04" E                      48°56'51" N, 006°50'28" E                      48°57'39" N, 006°52'02" E                      49°02'02" N, 006°59'35" E                      49°07'30" N, 007°09'02" E</p> <p><b>Vertical limits</b>                      FL155/FL195</p>

## LATERAL AND VERTICAL LIMITS - BRAVO CONFIGURATION

**ZRT ORION 1****Lateral limits**

49°44'54" N, 003°39'37" E  
 49°48'33" N, 003°59'40" E  
 49°49'16" N, 004°18'40" E  
 49°42'14" N, 004°44'56" E  
 49°34'29" N, 004°41'42" E  
 49°21'36" N, 004°23'38" E  
 49°14'55" N, 004°10'21" E  
 49°22'46" N, 004°03'02" E  
 49°25'01" N, 003°49'11" E  
 49°33'22" N, 003°45'56" E  
 49°44'54" N, 003°39'37" E

Excluding the aerodrome sector defined in § B.3 of A/D Rethel.

**Vertical limits**

SFC / 1500 ft AGL

**ZRT ORION 2****Lateral limits**

49°14'55" N, 004°10'21" E  
 49°21'36" N, 004°23'38" E  
 49°34'29" N, 004°41'42" E  
 49°22'10" N, 005°05'30" E  
 49°15'41" N, 005°09'24" E  
 48°58'25" N, 005°19'40" E  
 48°54'00" N, 004°48'00" E  
 48°52'31" N, 004°40'10" E  
 48°49'47" N, 004°34'41" E  
 48°49'33" N, 004°11'03" E  
 49°02'06" N, 004°10'25" E  
 49°07'30" N, 004°10'25" E  
 49°14'55" N, 004°10'21" E

Excluding the LF-R 175 A when active, the interfering part of the CTR VATRY and the TMA 4 Seine when active and the aerodrome sectors defined in § B.3 of the Prunay and Chalons Ecury A/Ds.

**Vertical limits**

SFC / 1500 ft AGL

**ZRT ORION 3****Lateral limits**

48°49'33" N, 004°11'03" E  
 48°49'47" N, 004°34'41" E  
 48°52'31" N, 004°40'10" E  
 48°54'00" N, 004°48'00" E  
 48°58'25" N, 005°19'40" E  
 48°15'50" N, 005°44'31" E  
 48°01'09" N, 005°15'57" E  
 48°31'02" N, 004°36'12" E  
 48°49'33" N, 004°11'03" E

Excluding the interfering part of the CTR Vatry, the TMA 4 Seine and the LF-R215 when active and aerodrome sectors defined in § B.3 of Bar Le Duc, Neufchâteau and Joinville A/Ds.

**Vertical limits**

SFC / 1500 ft AGL

**ZRT ORION 4****Lateral limits**

48°31'02" N, 004°36'12" E  
 48°17'25" N, 004°54'24" E  
 48°01'09" N, 005°15'57" E  
 47°57'12" N, 005°10'14" E  
 47°55'43" N, 005°02'37" E  
 47°54'10" N, 004°46'47" E  
 47°54'10" N, 004°43'21" E  
 48°00'00" N, 004°30'00" E  
 48°17'00" N, 004°30'00" E  
 48°27'02" N, 004°15'33" E  
 48°35'00" N, 004°09'20" E  
 48°40'20" N, 004°11'57" E  
 Circle of 4.86 nm radius centered on  
 48°39'00" N, 004°19'00" E  
 48°38'23" N, 004°26'16" E  
 48°31'02" N, 004°36'12" E

Excluding the interfering part defined in § B.3 Brienne le Château and Juvancourt A/Ds.

**Vertical limits**

SFC / 1500 ft AGL

LATERAL AND VERTICAL LIMITS - BRAVO CONFIGURATION

<p><b>ZRT SISSONNE</b> <u>Lateral limits</u></p> <p>49°48'33" N, 003°59'40" E 49°21'36" N, 004°23'38" E 49°14'55" N, 004°10'21" E 49°22'46" N, 004°03'02" E 49°25'01" N, 003°49'11" E 49°44'54" N, 003°39'37" E 49°48'33" N, 003°59'40" E</p> <p><u>Vertical limits</u> <b>SISSONNE 1</b> : 1500 ft AGL / FL085 <b>SISSONNE 2</b> : FL085 / FL115</p>	<p><b>ZRT REIMS</b> <u>Lateral limits</u></p> <p>49°48'33" N, 003°59'40" E 49°49'16" N, 004°18'40" E 49°42'14" N, 004°44'56" E 49°34'29" N, 004°41'42" E 49°21'36" N, 004°23'38" E 49°48'33" N, 003°59'40" E</p> <p><u>Vertical limits</u> <b>REIMS 1</b> : 1500 ft AGL / FL085 <b>REIMS 2</b> : FL085 / FL115</p>	<p><b>ZRT VOUZIERES</b> <u>Lateral limits</u></p> <p>49°34'29" N, 004°41'42" E 49°22'10" N, 005°05'30" E 49°18'22" N, 005°07'47" E 49°18'21" N, 005°07'33" E 49°02'06" N, 004°27'08" E 49°02'06" N, 004°10'25" E 49°07'30" N, 004°10'25" E 49°14'55" N, 004°10'21" E 49°21'36" N, 004°23'38" E 49°34'29" N, 004°41'42" E</p> <p>Excluding LF-R69, LF-R45N5.1, LF-R45N2 and LF-R 175 A when active.</p> <p><u>Vertical limits</u> <b>VOUZIERES 1</b> : 1500 ft AGL / 5500 ft AMSL <b>VOUZIERES 2</b> : 5500 ft AMSL / FL085 <b>VOUZIERES 3</b> : FL085 / FL155</p>
<p><b>ZRT EPERNAY</b> <u>Lateral limits</u></p> <p>48°49'33" N, 004°11'03" E 48°43'51" N, 004°18'51" E Circle of 4.86 nm radius centered on 48°39'00" N, 004°19'00" E 48°40'20" N, 004°11'57" E 48°35'00" N, 004°09'20" E 48°49'30" N, 003°56'00" E 49°07'30" N, 003°56'00" E 49°07'30" N, 004°10'25" E 49°02'06" N, 004°10'25" E 48°49'33" N, 004°11'03" E</p> <p><u>Vertical limits</u> FL085 / FL115</p>	<p><b>ZRT VITRY</b> <u>Lateral limits</u></p> <p>48°01'09" N, 005°15'57" E 48°49'33" N, 004°11'03" E 49°02'06" N, 004°10'25" E 49°02'06" N, 004°27'08" E 49°18'21" N, 005°07'33" E 49°18'22" N, 005°07'47" E 48°58'25" N, 005°19'40" E 48°15'50" N, 005°44'30" E 48°01'09" N, 005°15'57" E</p> <p>Excluding the CTR Vetry and TMA 4 Seine when active.</p> <p><u>Vertical limits</u> <b>VITRY 1</b> : 1500 ft AGL / 5500 ft AMSL <b>VITRY 2</b> : 5500 ft AMSL / FL085 <b>VITRY 3</b> : FL085 / FL195</p>	<p><b>ZRT CHAMBLEY</b> <u>Lateral limits</u></p> <p>49°18'22" N, 005°07'47" E 49°27'06" N, 005°54'23" E 49°26'47" N, 006°04'46" E 49°18'38" N, 006°15'00" E 48°41'26" N, 006°13'30" E 48°29'44" N, 005°56'32" E 48°27'13" N, 005°37'56" E 48°58'25" N, 005°19'40" E 49°18'22" N, 005°07'47" E</p> <p>Excluding TMA Lorraine 1, 2 and 3 when active.</p> <p><u>Vertical limits</u> FL085 / FL195</p>
<p><b>ZRT MAILLY</b> <u>Lateral limits</u></p> <p>48°31'02" N, 004°36'10" E 48°17'26" N, 004°54'25" E 48°17'00" N, 004°30'00" E 48°27'02" N, 004°15'33" E 48°35'00" N, 004°09'20" E 48°40'20" N, 004°11'57" E Circle of 4.86 nm radius centered on 48°39'00" N, 004°19'00" E 48°38'23" N, 004°26'16" E 48°31'02" N, 004°36'10" E</p> <p>Excluding LF-R6A when active.</p> <p><u>Vertical limits</u> <b>MAILLY 1</b> : 1500 ft AGL / 5500 ft AMSL <b>MAILLY 2</b> : 5500 ft AMSL / FL085 <b>MAILLY 3</b> : FL085 / FL155</p>	<p><b>ZRT CHAUMONT</b> <u>Lateral limits</u></p> <p>48°17'26" N, 004°54'25" E 48°01'09" N, 005°15'57" E 47°57'12" N, 005°10'14" E 47°55'43" N, 005°02'37" E 47°54'10" N, 004°46'47" E 47°54'10" N, 004°43'21" E 47°56'30" N, 004°38'01" E 48°06'25" N, 004°30'00" E 48°17'00" N, 004°30'00" E 48°17'26" N, 004°54'25" E</p> <p><u>Vertical limits</u> <b>CHAUMONT 1</b> : 1500 ft AGL / 5500 ft AMSL <b>CHAUMONT 2</b> : 5500 ft AMSL / FL085 <b>CHAUMONT 3</b> : FL085 / FL155</p>	
<p><b>ZRT LANGRES</b> <u>Lateral limits</u></p> <p>47°47'04" N, 004°45'43" E 47°54'10" N, 004°43'21" E 47°54'10" N, 004°46'47" E 47°55'43" N, 005°02'37" E 47°56'07" N, 005°04'38" E 47°51'25" N, 005°06'31" E 47°49'13" N, 004°54'57" E 47°47'04" N, 004°45'43" E</p> <p><u>Vertical limits</u> <b>LANGRES 1</b> : SFC / 1500 ft AGL <b>LANGRES 2</b> : 1500 ft AGL / 5500 ft AMSL</p>	<p><b>ZRT DAMBLAIN</b> <u>Lateral limits</u></p> <p>48°08'18" N, 005°29'55" E 48°15'48" N, 005°44'28" E 48°10'51" N, 005°47'22" E 48°05'22" N, 005°42'05" E 48°08'18" N, 005°29'55" E</p> <p><u>Vertical limits</u> <b>DAMBLAIN 1</b> : SFC / 1500 ft AGL <b>DAMBLAIN 2</b> : 1500 ft AGL / 5500 ft AMSL</p>	



**ADDITIONAL PROVISIONS**

**Additional activities** are scheduled on the dates and times described below in the following areas :

- TRA 200 A, TRA 22 A ;
- LF-R 175 A SUIPPES, LF-R213 North-East volume A and LF-R 321 Saint-Dizier.

**DRONES activities** : Transit Drone via North Corridors (in accordance with the SUP AIP in force).

**EXCLUSIONS :**

**CTR exclusions** : CTR VATRY and CTR SAINT-DIZIER.

**Aerodrome exclusion sectors :**

An aerodrome exclusion sector corresponds to the volume of a 3.5 Nm circle centered on the ARP of the aerodrome in question, from the ground to 1500 ft AGL. The aerodromes concerned are : Rethel Perthes (LFAP), Reims Prunay (LFQA), Châlons Ecury sur Coole (LFQK), Bar Le Duc Les Hauts de Chée (LFEU), Neufchâteau (LFFT), Juvancourt (LFQX), Joinville Mussey (LFFJ) and Brienne le Château (LFFN).

The exclusion sectors are active :

- when the ZRT ORION 1, ZRT ORION 2, ZRT ORION 3 and ZRT ORION 4 are active for the aerodromes of Rethel Perthes, Châlons-Ecury sur Coole and Reims Prunay.
- when the ZRT ORION 1, ZRT ORION 2, ZRT ORION 3 and ZRT ORION 4 are active and the LF-R213 A is not active for the aerodromes of Bar Le Duc Les Hauts de Chée, Neufchâteau, Juvancourt, Joinville Mussey and Brienne le Chateau.

They allow users in GAT / OAT only :

- to perform runway laps on the aerodromes concerned ;
- arrivals and departures at aerodromes when the exclusion sector allows it.

**RESTRICTIONS :**

The LF-R4 A B and C and the ZRT CTAS (AIP SUP 270 /22) cannot be activated during the ORION exercise.

The LF-R122, LF-R123, LF-R322 and LF-R323 cannot be activated during the ORION exercise.

The ZRT SISSONNE 2 will be deactivated in the event of the opening of the LORNI and / or REM holding sectors.

**DATES AND TIMES OF ACTIVITY**

**ZRT ORION 1, ZRT ORION 2, ZRT ORION 3, and ZRT ORION 4, ZRT LANGRES 1 & 2 and ZRT DAMBLAIN 1 & 2 :**

Can be activated H24 according to the dates indicated in the table below - Actual activity confirmed by NOTAM on D-1.

**ZRT BACCARAT, ZRT VOSGES and ZRT CONTREX, ZRT SISSONE 1 & 2, ZRT REIMS 1 & 2, ZRT VOUIERS 1 & 2 & 3, ZRT EPERNAY, ZRT CHAMBLEY, ZRT VITRY 1 & 2 & 3, ZRT MAILLY 1 & 2 & 3, ZRT CHAUMONT 1 & 2 & 3 :**

Active according to the times indicated in the table below - Actual activity confirmed by NOTAM on D-1.

**All sports and recreational air activities located inside the ZRTs are suspended during the activation slots.**

**User Information :**

Users will be able to find out about the ZRT activity forecast directly from the Airspace Manager Exercise Orion Cell, no later than D-1.

1500 Contact them first by email [orion.asm.fct@intradef.gouv.fr](mailto:orion.asm.fct@intradef.gouv.fr) or failing that by telephone number ASM1 : 02 36 98 85 81 or ASM2 : 04 34 23 31 92.

**Users are invited to read the daily summary NOTAM and the additional NOTAMs published on a daily basis.**

**All ZRT activations (defined as active or activatable in this AIP SUP) will be confirmed by NOTAM on D-1.**

ZONE	LIMITES VERTICALES	SEMAINE 16						
		LUN	MAR	MER	JEU	VEN	SAM	DIM
		17/04	18/04	19/04	20/04	21/04	22/04	23/04
ZRT BACCARAT	FL195 / FL325			0800-0930	1200-1330	1200-1330		
TRA 200 A	FL195 / UNL			0800-0930	1200-1330	1200-1330		
TRA 22 A	FL195 / UNL			0800-0930	1200-1330	1200-1330		
ZRT CONTREX	FL115 / FL195			0800-0930	1200-1330	1200-1330		
ZRT VOSGES	FL155 / FL195			0800-0930	1200-1330	1200-1330		
LF-R321	FL115 / FL195			0800-0930	1200-1330	1200-1330		
LF-R213 A	250 ft ASFC / FL115			0800-0930	1200-1330	1200-1330		
LF-R175 A	SFC / FL195			0800-0930	1200-1330	1200-1330		
ZRT ORION 1	SFC / 1500 ft AGL	Activable H24	Activable H24	Activable H24	Activable H24	Activable H24	Activable H24	Activable H24
ZRT ORION 2	SFC / 1500 ft AGL	Activable H24	Activable H24	Activable H24	Activable H24	Activable H24	Activable H24	Activable H24
ZRT ORION 3	SFC / 1500 ft AGL	Activable H24	Activable H24	Activable H24	Activable H24	Activable H24	Activable H24	Activable H24
ZRT ORION 4	SFC / 1500 ft AGL	Activable H24	Activable H24	Activable H24	Activable H24	Activable H24	Activable H24	Activable H24
ZRT LANGRES 1 ZRT LANGRES 2	SFC / 1500 ft AGL 1500 ft AGL / 5500 ft AMSL		Activable H24	Activable H24	Activable H24	Activable H24	Activable H24	Activable H24
ZRT DAMBLAIN 1 ZRT DAMBLAIN 2	SFC / 1500 ft AGL 1500 ft AGL / 5500 ft AMSL		Activable H24	Activable H24	Activable H24	Activable H24	Activable H24	Activable H24
ZRT SISSONNE 1 ZRT REIMS 1	1500 ft AGL / FL 085						0730-1030 1200-1500 1800-2100	0730-1030 1200-1500 1800-2100
ZRT VOUIERS 1 ZRT VITRY 1 ZRT MAILLY 1 ZRT CHAUMONT 1	1500 ft AGL / 5500 ft AMSL		0730-1030 1200-1500 1800-2100	0730-1030 1200-1500 1800-2100	0730-1030 1200-1500 1800-2100	0730-1030 1200-1500 1800-2100	0730-1030 1200-1500 1800-2100	0730-1030 1200-1500 1800-2100
ZRT SISSONNE 2 ZRT REIMS 2	FL085 / FL115						0730-1030 1230-1430	0730-1030 1230-1430
ZRT VOUIERS 2 ZRT VOUIERS 3	5500 ft AMSL / FL085 FL085 / FL155						0730-1030 1230-1430	0730-1030 1230-1430
ZRT EPERNAY	FL085 / FL115						0730-1030 1230-1430	0730-1030 1230-1430
ZRT VITRY 2 ZRT VITRY 3	5500 ft AMSL / FL085 FL085 / FL195						0730-1030 1230-1430	0730-1030 1230-1430
ZRT CHAMBLEY	FL085 / FL195						0730-1030 1230-1430	0730-1030 1230-1430
ZRT MAILLY 2 ZRT MAILLY 3	5500 ft AMSL / FL085 FL085 / FL155						0730-1030 1230-1430	0730-1030 1230-1430
ZRT CHAUMONT 2 ZRT CHAUMONT 3	5500 ft AMSL / FL085 FL085 / FL155						0730-1030 1230-1430	0730-1030 1230-1430

ZONE	LIMITES VERTICALES	SEMAINE 17						
		LUN	MAR	MER	JEU	VEN	SAM	DIM
		24/04	25/04	26/04	27/04	28/04	29/04	30/04
TRA 200 A	FL195 / UNL	1030-1230		1300-1500				
ZRT ORION 1	SFC / 1500 ft AGL	Activable H24	Activable H24	Activable H24	Activable H24	Activable H24	Activable H24	Activable H24
ZRT ORION 2	SFC / 1500 ft AGL	Activable H24	Activable H24	Activable H24	Activable H24	Activable H24	Activable H24	Activable H24
ZRT ORION 3	SFC / 1500 ft AGL	Activable H24	Activable H24	Activable H24	Activable H24	Activable H24	Activable H24	Activable H24
ZRT ORION 4	SFC / 1500 ft AGL	Activable H24	Activable H24	Activable H24	Activable H24	Activable H24	Activable H24	Activable H24
ZRT LANGRES 1 ZRT LANGRES 2	SFC / 1500 ft AGL 1500 ft AGL / 5500 ft AMSL	Activable H24	Activable H24	Activable H24	Activable H24	Activable H24	Activable H24	Activable H24
ZRT DAMBLAIN 1 ZRT DAMBLAIN 2	SFC / 1500 ft AGL 1500 ft AGL / 5500 ft AMSL	Activable H24	Activable H24	Activable H24	Activable H24	Activable H24	Activable H24	Activable H24
ZRT SISSONNE 1 ZRT REIMS 1	1500 ft AGL / FL085	0730-1030 1200-1500 1800-2100	0730-1030 1200-1500 1800-2100	0730-1030 1200-1500 1800-2100	0730-1030 1200-1500 1800-2100	0730-1030 1200-1500 1800-2100	0730-1030 1200-1500 1800-2100	0730-1030 1200-1500 1800-2100
ZRT VOUZIERES 1 ZRT VITRY 1 ZRT MAILLY 1 ZRT CHAUMONT 1	1500 ft AGL / 5500 ft AMSL	0730-1030 1200-1500 1800-2100	0730-1030 1200-1500 1800-2100	0730-1030 1200-1500 1800-2100	0730-1030 1200-1500 1800-2100	0730-1030 1200-1500 1800-2100	0730-1030 1200-1500 1800-2100	0730-1030 1200-1500 1800-2100
ZRT SISSONNE 2 ZRT REIMS 2	FL085 / FL115	0800-1200 1300-1500	0730-1030 1200-1330 1800-2000	0730-1030 1200-1330	0730-1030 1200-1500	0730-1030 1200-1500	0730-1030 1200-1500	2000-2200
ZRT VOUZIERES 2 ZRT VOUZIERES 3	5500 ft AMSL / FL085 FL085 / FL155	0800-1200 1300-1500	0730-1030 1200-1330 1800-2000	0730-1030 1200-1330	0730-1030 1200-1500	0730-1030 1200-1500	0730-1030 1200-1500	2000-2200
ZRT EPERNAY	FL085 / FL115	0800-1200 1300-1500	0730-1030 1200-1330 1800-2000	0730-1030 1200-1330	0730-1030 1200-1500			2000-2200
ZRT VITRY 2 ZRT VITRY 3	5500 ft AMSL / FL085 FL085 / FL195	0800-1200 1300-1500	0730-1030 1200-1330 1800-2000	0730-1030 1200-1330	0730-1030 1200-1500			2000-2200
ZRT CHAMBLEY	FL085 / FL195	0800-1200 1300-1500	0730-1030 1200-1330 1800-2000	0730-1030 1200-1330	0730-1030 1200-1500			2000-2200
ZRT MAILLY 2 ZRT MAILLY 3	5500 ft AMSL / FL085 FL085 / FL155	0800-1200 1300-1500	0730-1030 1200-1330 1800-2000	0730-1030 1200-1330	0730-1030 1200-1500			2000-2200
ZRT CHAUMONT 2 ZRT CHAUMONT 3	5500 ft AMSL / FL085 FL085 / FL155	0800-1200 1300-1500	0730-1030 1200-1330 1800-2000	0730-1030 1200-1330	0730-1030 1200-1500			2000-2200

ZONE	LIMITES VERTICALES	SEMAINE 18			
		LUN	MAR	MER	JEU
		01/05	02/05	03/05	04/05
TRA 200 A	FL195 / UNL	1300-1430 1800-2000	2030-2230	0800-0930	
ZRT ORION 1	SFC / 1500 ft AGL	Activable H24	Activable H24	Activable H24	Activable H24
ZRT ORION 2	SFC / 1500 ft AGL	Activable H24	Activable H24	Activable H24	Activable H24
ZRT ORION 3	SFC / 1500 ft AGL	Activable H24	Activable H24	Activable H24	Activable H24
ZRT ORION 4	SFC / 1500 ft AGL	Activable H24	Activable H24	Activable H24	Activable H24
ZRT LANGRES 1 ZRT LANGRES 2	SFC / 1500 ft AGL 1500 ft AGL / 5500 ft AMSL	Activable H24	Activable H24	Activable H24	Activable H24
ZRT DAMBLAIN 1 ZRT DAMBLAIN 2	SFC / 1500 ft AGL 1500 ft AGL / 5500 ft AMSL	Activable H24	Activable H24	Activable H24	Activable H24
ZRT SISSONNE 1 ZRT REIMS 1	1500 ft AGL / FL085	0730-1030 1200-1500 1800-2100	0730-1030 1200-1500 1800-2100	0730-1030 1200-1500 1800-2100	0730-1030 1200-1500 1800-2100
ZRT VOUZIERES 1 ZRT MAILLY 1 ZRT CHAUMONT 1	1500 ft AGL / 5500 ft AMSL	0730-1030 1200-1500 1800-2100	0730-1030 1200-1500 1800-2100	0730-1030 1200-1500 1800-2100	0730-1030 1200-1500 1800-2100
ZRT VITRY 1	1500 ft AGL / 5500 ft AMSL	0730-1030 1200-1500 1800-2100	0730-1030 1200-1500 1800-2230	0730-1030 1200-1500 1800-2100	0730-1030 1200-1500 1800-2100
ZRT SISSONNE 2 ZRT REIMS 2	FL085 / FL115	0730-1030 1200-1330 1800-2000	0730-1030 2000-2200	0800-0930 1200-1330	0800-0930 1200-1330
ZRT VOUZIERES 2 ZRT VOUZIERES 3	5500 ft AMSL / FL085 FL085 / FL155	0730-1030 1200-1500 1800-2000	0730-1030 2000-2200	0800-0930 1200-1330	0800-0930 1200-1330
ZRT EPERNAY	FL085 / FL115	0730-1030 1200-1330 1800-2000	0730-1030 2000-2200	0800-0930 1200-1330	0800-0930 1200-1330
ZRT VITRY 2 ZRT VITRY 3	5500 ft AMSL / FL085 FL085 / FL195	0730-1030 1200-1500 1800-2000	0730-1030 1900-2230	0800-0930 1200-1330	0800-0930 1200-1330
ZRT CHAMBLEY	FL085 / FL195	0730-1030 1200-1500 1800-2000	0730-1030 2030-2230	0800-0930 1200-1330	0800-0930 1200-1330
ZRT MAILLY 2 ZRT MAILLY 3	5500 ft AMSL / FL085 FL085 / FL155	0730-1030 1200-1500 1800-2000	0730-1030 2030-2230	0800-0930 1200-1330	0800-0930 1200-1330
ZRT CHAUMONT 2 ZRT CHAUMONT 3	5500 ft AMSL / FL085 FL085 / FL155	0730-1030 1200-1500 1800-2000	0730-1030 2030-2230	0800-0930 1200-1330	0800-0930 1200-1330

**USERS INFORMATION**

<p><b>Actual time slots provided by :</b></p> <p>LORRAINE APP                    119.125 MHz          PHALSBOURG APP                118.450 MHz          STRASBOURG INFO                119.450 MHz and 134.575 MHz          REIMS CTL (East sector)        128.300 MHz          REIMS CTL (South-East sector) 124.950 MHz          BALE INFO                        130.900 MHz and 135.850 MHz          PARIS INFO                        126.100 MHz          SEINE APP / INFO                120.325 MHz          VATRY TWR / INFO                129.400 MHz</p>	<p>RAMBERT (or back-up CRC) : 119.700 MHz / 143.550 MHz / 317.500 MHz          CASCADEUR :                    132.335 MHz          POLO :                            134.660 MHz / 136.430 MHz          RAI Chaumont Semoutiers :    118.775 MHz          SAINT DIZIER APP :            134.775 MHz          LUXEUIL APP :                 129.925 MHz          OCHEY APP :                    127.250 MHz          ETAIN APP :                    120.125 MHz</p>
---	--

**MANAGING AUTHORITY**

**ZRT BACCARAT, ZRT VOSGES and ZRT CONTREX** : RAMBERT (Lyon Mont Verdun Control and Reporting Centre) or back up CRC in case of replacement plan.

**ZRT ORION 1, ZRT ORION 2, ZRT ORION 3, ZRT ORION 4, ZRT SISSONE 1 & 2, ZRT REIMS 1 & 2, ZRT VOUIZIERS 1, 2 & 3, ZRT EPERNAY, ZRT VITRY 1, 2 & 3, ZRT CHAMBLEY, ZRT MAILLY 1, 2 & 3, ZRT CHAUMONT 1, 2 & 3, ZRT LANGRES 1 & 2, ZRT DAMBLAIN 1 & 2** :  
 RAMBERT (Lyon Mont Verdun Control and Reporting Centre) or back up CRC

**RELEVANT AUTHORITIES CONTACT DETAILS**

<p><b>Before the exercise :</b></p> <p>Questions relating to AIP SUP</p> <p>Air Defense and Air Operations Command / EMO A7          (Section EA &amp; Expertise 3D)          Phone : +33 (0)4 87 65 57 98 or 04 87 65 54 05.          PNIA : 864 942 4798 (99).</p> <p>Or</p> <p>PREPA OPS section - Assembly Exercise          ORION 2023 Airspace.          PNIA : Phone : +33 (0)4 87 65 60 65 or 864 942 90 65.</p>	<p><b>During the exercise :</b></p> <p>Airspace Manager EXERCISE ORION          - Phone : ASM1 : 02 36 98 85 81 or ASM2 : 04 34 23 31 92.          - E-mail : <a href="mailto:orion.asm.fct@intra.def.gouv.fr">orion.asm.fct@intra.def.gouv.fr</a>          Military Detection and Control Center (CDC) of Lyon Mont Verdun          Phone : +33 (0)4 81 18 33 27 or 04 78 14 65 21.</p> <p>Cinq Mars la Pile Military Control and Detection Center (CDC)          Phone : +33 (0)2 47 96 28 63 or 02 47 96 30 00.</p> <p>Military Detection and Control Center (CDC) of Mont-de-Marsan          Phone : +33 (0)5 58 06 84 51 or 05 33 94 08 48.</p>
--	--