

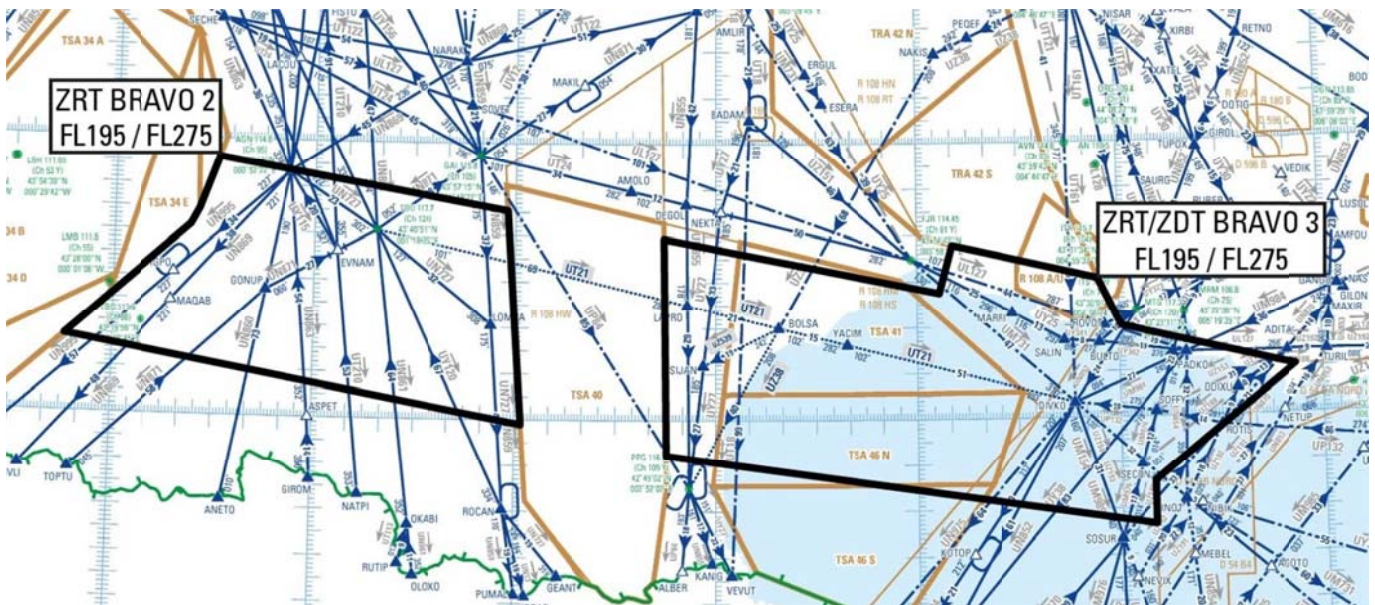
**Subject :** Creation of temporary restricted areas (ZRTs) and temporary danger areas (ZDTs) for the BELOTE 2021-04 exercise in the FIRs and the France UIR

**Validity :** From October 19 to 21, 2021

Place : UIR : France – FIRs : Bordeaux LFBB, Paris LFFF, Brest LFRR, Marseille LFMM - AD : Aurillac LFLW, Brive Souillac LFSL, Cahors Lalbenque LFCC, Le Puy Loudes LFHP, Rodez Aveyron LFCR, Mende Brenoux LFNB, Castres Mazamet LFCK, Montluçon Guéret LFBK, Ruoms LFHF, La Réole Foudès LFDR, Marmande Virazeil LFDN, Villeneuve sur Lot LFCW.

## A: BELOTE - NOMINAL

### BRAVO 2 ZRT and BRAVO 3 ZRT/ZDT



DATES AND TIMES OF ACTIVITY	
<b>BRAVO 2 ZRT</b>	<b>BRAVO 3 ZRT/ZDT</b>
From Tuesday, October 19, 2021 at 2130 to Wednesday, October 20, 2021 at 0020 Possible postponement by 24 hours, same times.	From Tuesday, October 19, 2021 at 2105 to Wednesday, October 20, 2021 at 0005 Possible postponement by 24 hours, same times.

USER INFORMATION	
Actual activity period available from:	
BORDEAUX ACC:	control frequencies
MARSEILLE ACC:	control frequencies
MARINA (Mont-de-Marsan CDC):	143.550 MHz / 317.500 MHz
RAMBERT (Lyon Mont Verdun CDC):	143.550 MHz / 317.500 MHz

**ENTRY CONDITIONS**

**BRAVO 2 ZRT**

GAT/Military Air Traffic: compulsory avoidance except for the following:

- aircraft involved in the exercise,
- aircraft performing assistance, rescue or public safety missions, when avoidance is not compatible with these missions and upon notification to the applicable Military Control and Detection Center (CDC) via the Civil Unit of Coordination (DCC).

**BRAVO 3 ZRT / ZDT**

ZRT part: GAT/Military Air Traffic, compulsory avoidance except for the following:

- aircraft involved in the exercise,
- aircraft performing assistance, rescue or public safety missions, when avoidance is not compatible with these missions and upon notification to the applicable Military Control and Detection Center (CDC) via the Civil Unit of Coordination (DCC).

ZDT part: GAT/Military Air Traffic, comply with the instructions of the usual air traffic control units.

Air users' attention is drawn to the particularly dangerous nature of the activities performed in these areas. Therefore, during the activity time slots, it is strongly recommended to avoid entering these areas.

**STATUS**

**BRAVO 2 ZRT:**

Temporary restricted area (ZRT).

**BRAVO 3 ZRT / ZDT:**

Temporary restricted area (ZRT) for the part located within 12 NM from coasts (limit of international waters).

Temporary danger area (ZDT) for the part located beyond 12 NM from coasts (limit of international waters).

These areas coexist with the controlled airspaces with which they interfere, and replace the portions of restricted areas with which they interfere.

**MANAGING AUTHORITY**

**BRAVO 2 ZRT:**

MARINA (Mont-de-Marsan Detection and Control Center) or the center taking over in case of replacement plan.

**BRAVO 3 ZRT:**

RAMBERT (Lyon Mont Verdun Detection and Control Center) or the center taking over in case of replacement plan.

**SERVICES PROVIDED**

**Military Air Traffic:** The control, flight information and alert services are provided in the ZRTs and the ZDT by the managing authorities.

**GAT:** In the ZRT and ZDT parts coexisting with controlled airspaces, the usual control authorities provide the users authorized to enter with the air traffic services in compliance with the class of the above-mentioned controlled airspaces.

**LATERAL AND VERTICAL LIMITS**

**BRAVO 2 ZRT**

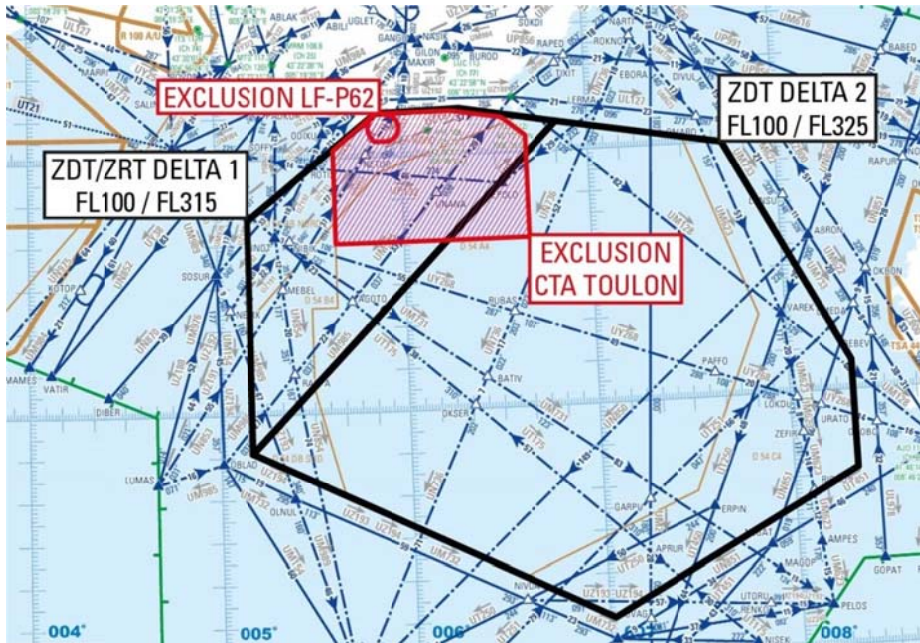
43°56'00.00" N,00°31'00.00" E  
 43°45'22.40" N,01°57'39.00" E  
 42°58'59.20" N,02°01'55.20" E  
 43°16'40.00" N,00°14'00.00" W  
 43°41'15.00" N,00°22'55.00" E  
 43°44'40.00" N,00°25'23.00" E  
 43°56'00.00" N,00°31'00.00" E

**BRAVO 3 ZRT/ZDT**

43°39'24.65" N,02°44'23.30" E  
 43°27'28.00" N,04°06'36.00" E  
 43°37'48.00" N,04°10'30.00" E  
 43°30'21.00" N,04°53'47.00" E  
 43°19'57.00" N,05°00'36.00" E  
 43°10'30.00" N,05°52'00.00" E  
 42°46'00.00" N,05°10'00.00" E  
 42°36'30.00" N,05°10'00.00" E  
 42°52'17.45" N,02°45'13.55" E  
 43°39'24.65" N,02°44'23.30" E

FL195 / FL275

DELTA 1 and DELTA 2 ZRT/ZDT



**DATES AND TIMES OF ACTIVITY**

**DELTA 1 ZDT/ZRT and DELTA 2 ZDT**

Tuesday, October 19, 2021 from 2045 to 2350.  
Possible postponement by 24 hours, same times.

**USER INFORMATION**

**Actual activity period available from:**

MARSEILLE ACC:	control frequencies
RAMBERT (Lyon Mont Verdun CDC):	143.550 MHz / 317.500 MHz
FANNY CTL (CCMAR Méditerranée):	127.975 MHz / 118.500 MHz
PROVENCE INFO:	132.950 MHz
PROVENCE APP:	121.430 MHz
NICE INFO:	122.925 MHz

**ENTRY CONDITIONS**

**DELTA 1 ZRT/ZDT and DELTA 2 ZDT**

ZRT part: GAT/Military Air Traffic, compulsory avoidance except for the following:

- aircraft involved in the exercise,
- aircraft performing assistance, rescue or public safety missions, when avoidance is not compatible with these missions and upon notification to the applicable Military Control and Detection Center (CDC) via the Civil Unit of Coordination (DCC).

ZDT parts: GAT/Military Air Traffic, comply with the instructions of the usual air traffic control units.

Air users' attention is drawn to the particularly dangerous nature of the activities performed in these areas. Therefore, during the activity time slots, it is strongly recommended to avoid entering these areas.

**STATUS**

**DELTA 1 ZRT/ZDT:**

Temporary restricted area (ZRT) for the part located within 12 NM from coasts (limits of territorial waters);  
Temporary danger area (ZDT) for the part located beyond 12 NM from coasts (limit of international waters).

**DELTA 2 ZDT:**

Temporary Danger Area (ZDT).  
These areas coexist with the controlled airspaces, and replace the portions of areas with special status with which they interfere.

**MANAGING AUTHORITY**

RAMBERT (Lyon Mont Verdun Detection and Control Center) or the center taking over in case of replacement plan.



SERVICES PROVIDED

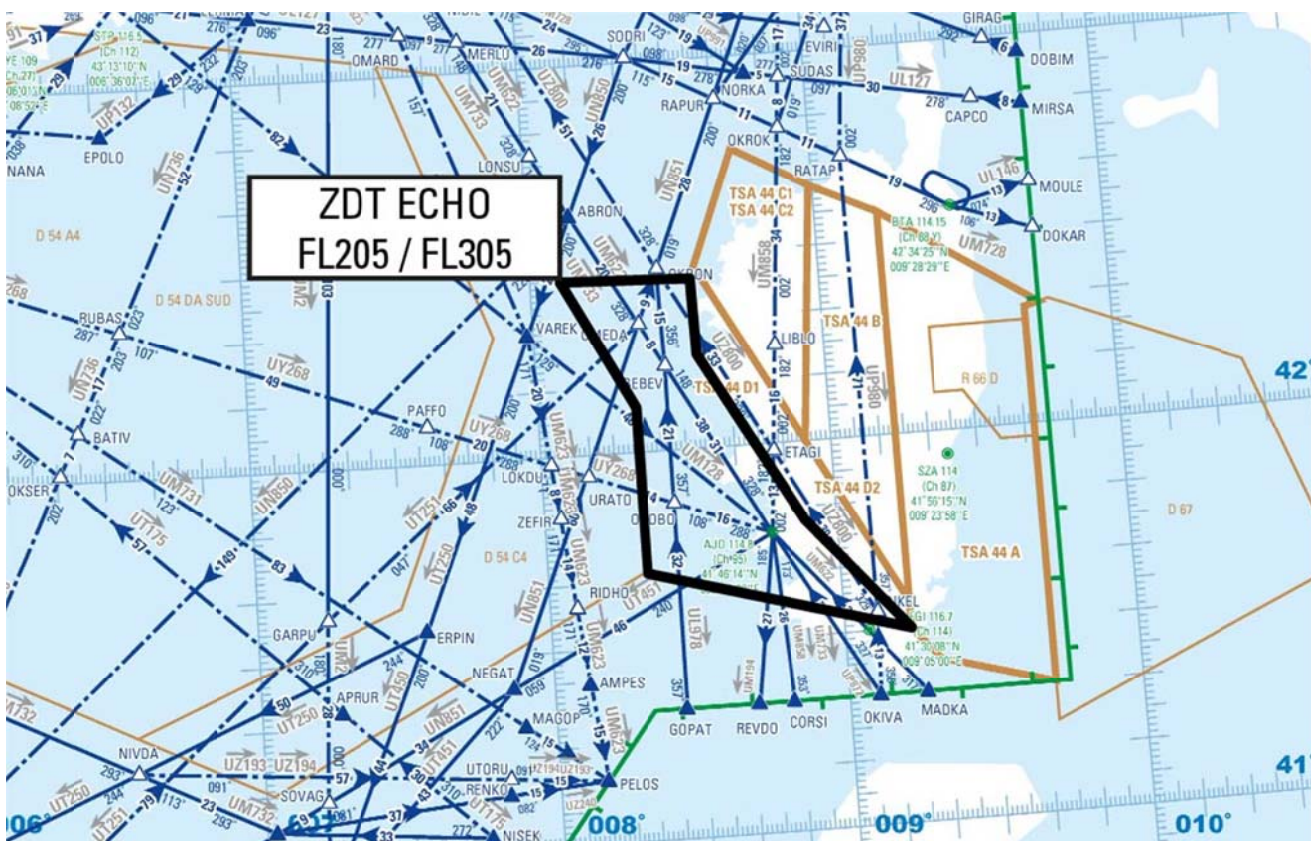
**Military Air Traffic:** The control, flight information and alert services are provided in the ZDT by the managing authorities.

**GAT:** In the ZDT parts coexisting with the controlled airspaces, the usual control authorities provide the users authorized to enter with the air traffic services in compliance with the class of the above-mentioned controlled airspaces.

LATERAL AND VERTICAL LIMITS

DELTA 1 ZDT	DELTA 2 ZDT
41°51'00.00" N,05°10'00.00" E 42°36'22.77" N,05°10'01.79" E 42°45'58.47" N,05°09'59.47" E 43°10'29.65" N,05°52'00.05" E 43°11'00.00" N,06°19'00.00" E 43°07'00.00" N,06°50'00.00" E 41°51'00.00" N,05°10'00.00" E	41°51'00.00" N,05°10'00.00" E 43°07'00.00" N,06°50'00.00" E 43°00'00.00" N,07°43'00.00" E 42°07'00.00" N,08°20'00.00" E 41°41'33.00" N,08°20'00.00" E 41°09'37.76" N,07°01'37.83" E 41°51'00.00" N,05°10'00.00" E
Excluding the LF-P62 TOULON and the Toulon CTA when active. FL100 / FL315	Excluding the Toulon CTA when active. FL100 / FL325

ECHO ZRT/ZDT



## DATES AND TIMES OF ACTIVITY

## ECHO ZRT/ZDT

Tuesday, October 19, 2021 from 2040 to 2320.  
Possible postponement by 24 hours, same times.

## USER INFORMATION

## Actual activity period available from:

MARSEILLE CONTROL: 133.875 MHz / 130.950 MHz  
RAMBERT (Lyon Mont Verdun CDC): 143.550 MHz / 317.500 MHz  
FANNY CTL (CCMAR Méditerranée): 127.975 MHz / 118.500 MHz

## ENTRY CONDITIONS

## ECHO ZRT/ZDT:

ZRT part: GAT/Military Air Traffic, compulsory avoidance except for the following:

- aircraft involved in the exercise,
- aircraft performing assistance, rescue or public safety missions, when avoidance is not compatible with these missions and upon notification to the applicable Military Control and Detection Center (CDC) via the Civil Unit of Coordination (DCC).

ZDT part: GAT/Military Air Traffic, comply with the instructions of the usual air traffic control units.

Air users' attention is drawn to the particularly dangerous nature of the activities performed in this area. Therefore, during the activity time slots, it is strongly recommended to avoid entering this area.

## STATUS

## ECHO ZRT/ZDT:

Temporary restricted area (ZRT) for the part located within 12 NM from coasts (limits of territorial waters),  
Temporary danger area (ZDT) for the part located beyond 12 NM from coasts (limit of international waters).

These areas coexist with the controlled airspaces with which they interfere, and replace the portions of restricted areas with which they interfere.

## MANAGING AUTHORITY

RAMBERT (Lyon Mont Verdun Detection and Control Center) or the center taking over in case of replacement plan.

## SERVICES PROVIDED

**Military Air Traffic**: The control, flight information and alert services are provided in the ZRT and the ZDTs by the managing authorities.

**GAT**: In the ZRT and ZDT parts coexisting with controlled airspaces, the usual control authorities provide the users authorized to enter with the air traffic services in compliance with the class of the above-mentioned controlled airspaces.

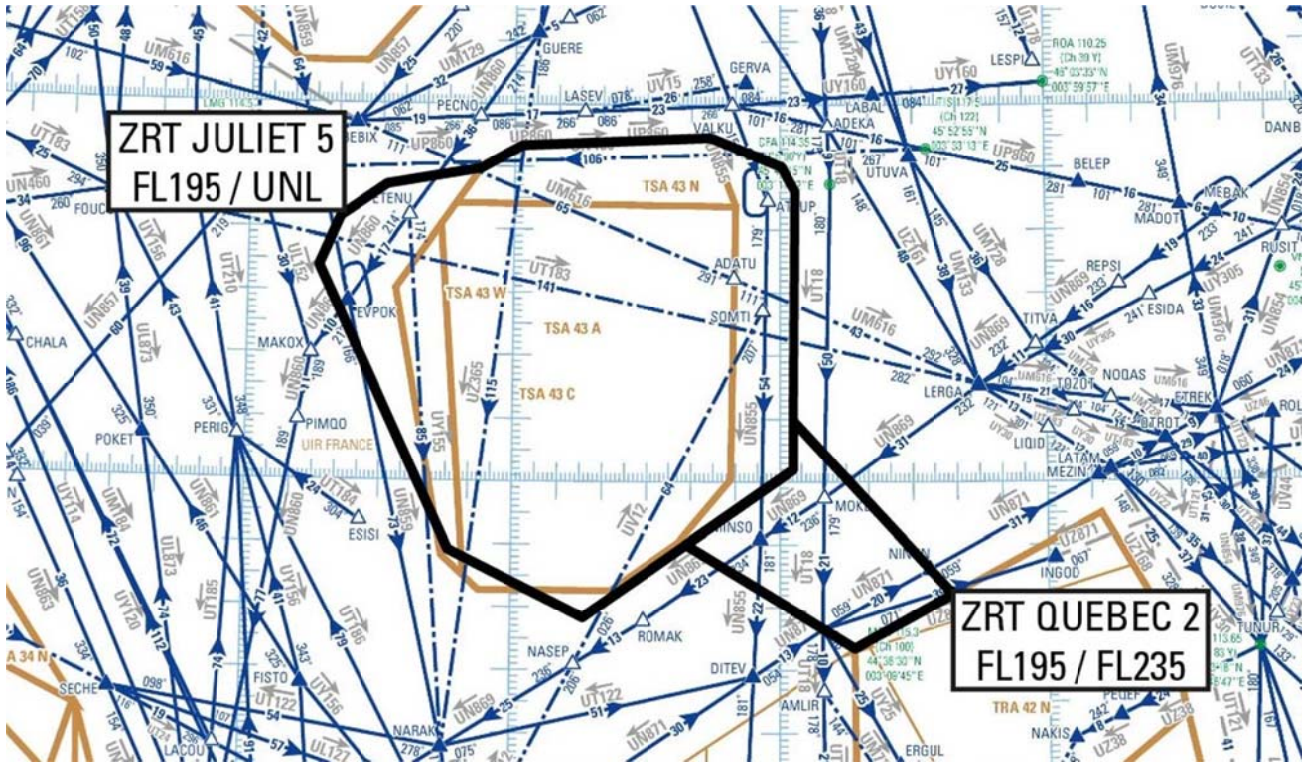
## LATERAL AND VERTICAL LIMITS

## ECHO ZDT

42°26'54.40" N,08°06'11.00" E  
42°26'14.00" N,08°33'07.00" E  
42°14'26.00" N,08°33'26.00" E  
41°47'53.00" N,08°53'22.00" E  
41°30'05.00" N,09°13'30.00" E  
41°41'17.00" N,08°20'16.00" E  
42°06'53.00" N,08°20'06.00" E  
42°26'54.40" N,08°06'11.00" E

FL205/FL305

JULIET 5 and QUEBEC 2 ZRTs



DATES AND TIMES OF ACTIVITY	
<b>QUEBEC 2 ZRT</b>	<b>JULIET 5 ZRT</b>
From Tuesday, October 19, 2021 at 2140 to Wednesday, October 20, 2021 at 0145 Possible postponement by 24 hours, same times.	From Tuesday, October 19, 2021 at 2220 to Wednesday, October 20, 2021 at 0145 Possible postponement by 24 hours, same times.

USER INFORMATION	
Actual activity period available from:	
BORDEAUX ACC:	control frequencies
MARSEILLE ACC:	control frequencies
RAMBERT (Lyon Mont Verdun CDC):	143.550 MHz / 317.500 MHz

ENTRY CONDITIONS
<b>JULIET 5 ZRT and QUEBEC 2 ZRT</b> GAT/Military Air Traffic: compulsory avoidance except for the following: - aircraft involved in the exercise, - aircraft performing assistance, rescue or public safety missions, when avoidance is not compatible with these missions and upon notification to the applicable Military Control and Detection Center (CDC) via the Civil Unit of Coordination (DCC).

STATUS
<b>JULIET 5 and QUEBEC 2 ZRTs</b> Temporary restricted areas (ZRTs) replacing the portions of controlled airspaces and restricted areas with which they interfere.

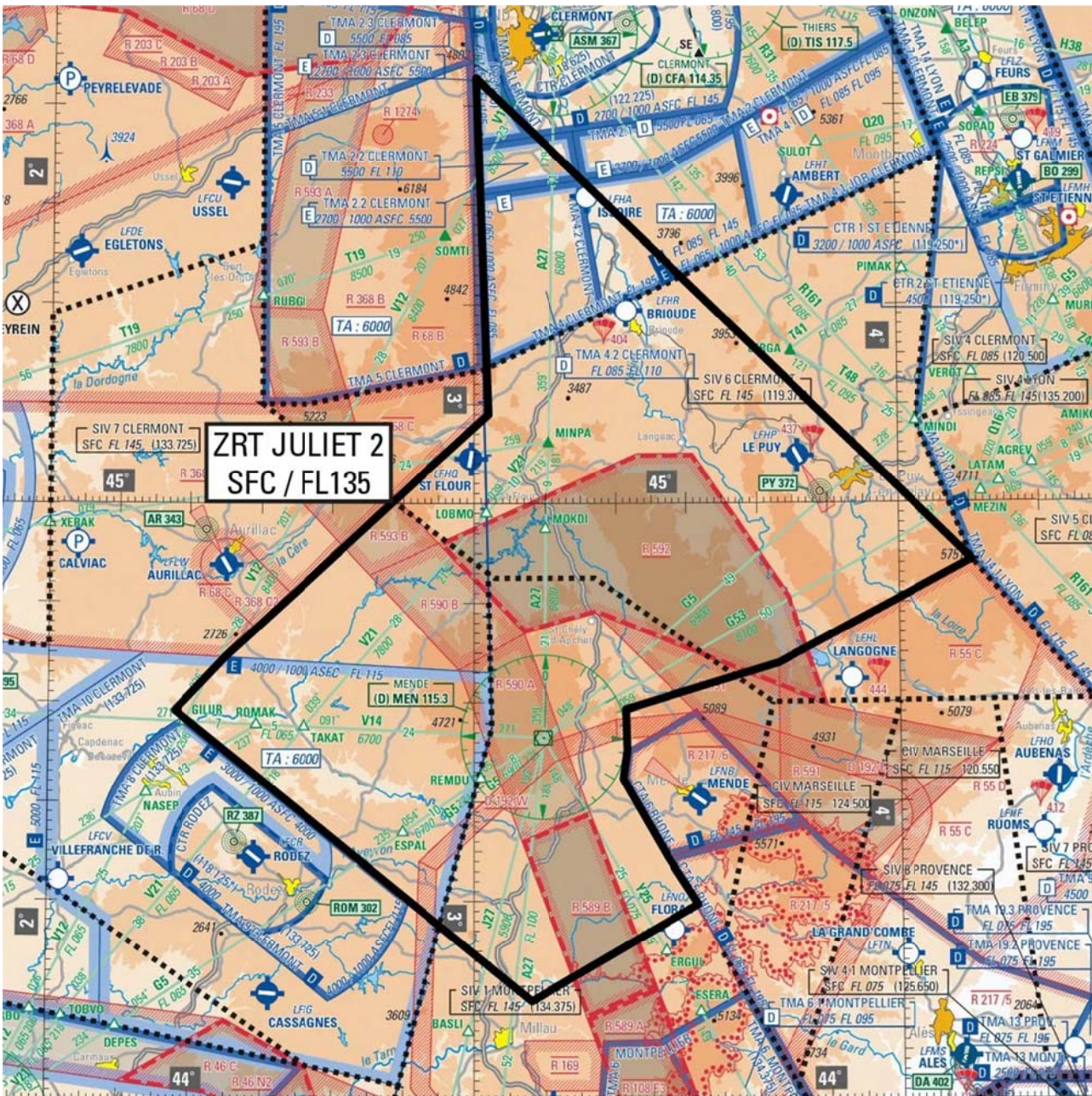
MANAGING AUTHORITY
RAMBERT (Lyon Mont Verdun Detection and Control Center) or the center taking over in case of replacement plan.

SERVICES PROVIDED
<b>Military Air Traffic:</b> The control, flight information and alert services are provided in the ZRT by the managing authority. <b>GAT:</b> Flight information and alert services.

LATERAL AND VERTICAL LIMITS	
JULIET 5	QUEBEC 2 ZRT
44°49'04.00" N,01°45'47.00" E 45°34'00.00" N,01°15'48.00" E 45°41'45.00" N,01°20'30.00" E 45°46'58.00" N,01°30'59.00" E 45°49'40.00" N,01°52'15.00" E 45°53'22.00" N,02°01'41.00" E 45°54'44.00" N,02°44'10.00" E 45°50'03.00" N,03°00'23.00" E 45°46'07.00" N,03°03'27.00" E 45°09'29.00" N,03°03'01.00" E 45°02'00.00" N,03°03'01.00" E 44°38'21.00" N,02°16'02.00" E 44°43'43.50" N,02°00'55.90" E 44°49'04.00" N,01°45'47.00" E	45°09'47.53" N,03°03'02.48" E 44°42'06.00" N,03°38'46.74" E 44°33'30.00" N,03°16'48.00" E 44°50'00.00" N,02°39'00.00" E 45°02'00.00" N,03°03'01.00" E 45°09'47.53" N,03°03'02.48" E
FL195 / UNL	FL195/FL235



JULIET 2 ZRT



**DATES AND TIMES OF ACTIVITY**

**JULIET 2 ZRT**

From Tuesday, October 19, 2021 at 2220 to Wednesday, October 20, 2021 at 0145  
Possible postponement by 24 hours, same times.



## USER INFORMATION

## Actual activity period available from:

CLERMONT INFO / APP:	122.225 MHz / 119.375 MHz / 133.725 MHz
MONTPELLIER APP:	131.055 MHz / 127.280 MHz
MONTPELLIER INFO:	134.375 MHz
RAMBERT (Lyon Mont Verdun CDC):	143.550 MHz / 317.500 MHz

## ENTRY CONDITIONS

**GAT/Military Air Traffic:** compulsory avoidance except for the following:

- aircraft involved in the exercise,
- GAT/IFR, guaranteed after coordination with RAMBERT (Lyon Mont Verdun CDC) or the replacement CDC, for aircraft inbound for or outbound from AURILLAC (LFLW) and LE PUY (LFHP) aerodromes;
- aircraft performing emergency, rescue, customs, police or civil security missions when avoidance is not compatible with these missions, upon notification to the Control and Detection Center via the Civil Unit of Coordination.

## STATUS

Temporary restricted area (ZRT) replacing the portions of airspaces and restricted areas with which it interferes.

## MANAGING AUTHORITY

RAMBERT (Lyon Mont Verdun Detection and Control Center) or the center taking over in case of replacement plan.

## SERVICES PROVIDED

**Military Air Traffic:** The control, flight information and alert services are provided in the ZRTs by the managing authorities.  
**GAT:** Flight information and alert services.

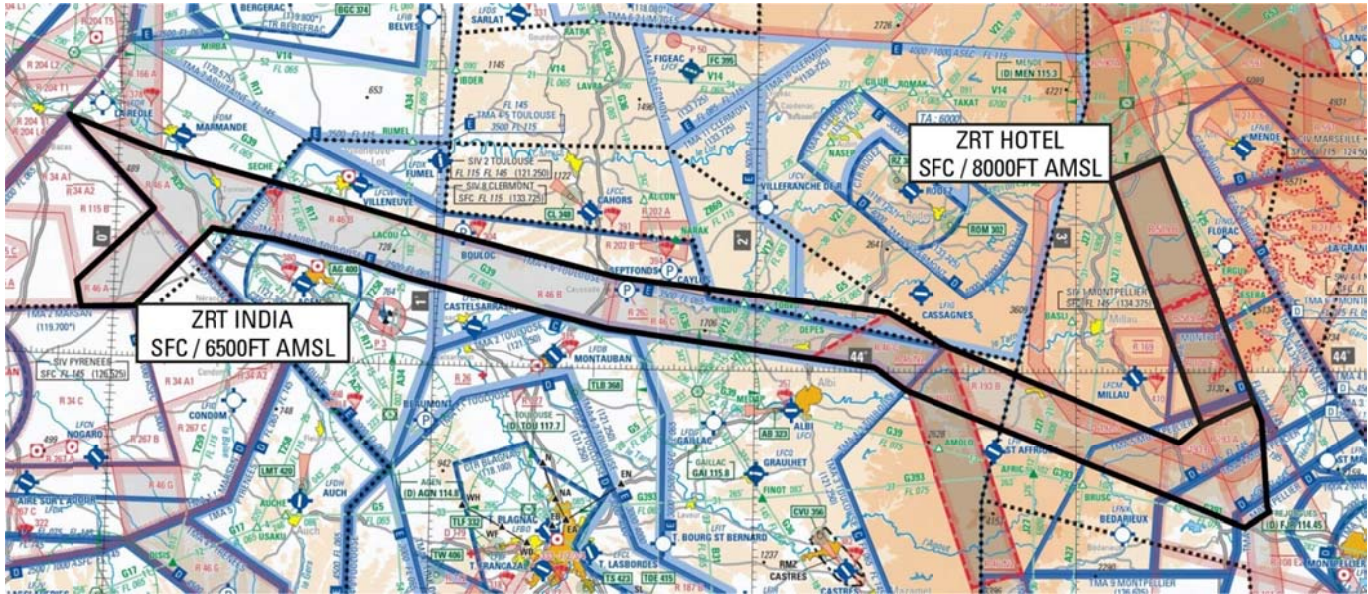
## LATERAL AND VERTICAL LIMITS

## JULIET 2 ZRT

44°54'16.00" N,04°10'18.00" E
45°42'45.00" N,03°00'16.00" E
45°09'00.00" N,03°02'00.00" E
44°44'40.00" N,02°25'00.00" E
44°39'12.00" N,02°17'53.52" E
44°20'03.52" N,02°50'52.56" E
44°10'00.00" N,03°08'00.00" E
44°19'43.00" N,03°31'24.86" E
44°24'26.00" N,03°27'12.00" E
44°32'21.00" N,03°20'56.00" E
44°35'15.00" N,03°21'30.00" E
44°39'20.00" N,03°21'20.00" E
44°44'00.00" N,03°43'00.00" E
44°54'16.00" N,04°10'18.00" E

SFC/FL135

INDIA and HOTEL ZRTs



DATES AND TIMES OF ACTIVITY	
<p><b>INDIA ZRT</b> From Tuesday, October 19, 2021 at 2155 to Wednesday, October 20, 2021 at 0105 Possible postponement by 24 hours, same times.</p>	<p><b>HOTEL ZRT</b> From Tuesday, October 19, 2021 at 2215 to Wednesday, October 20, 2021 at 0105 Possible postponement by 24 hours, same times.</p>

USER INFORMATION	
<p><b>INDIA ZRT</b> Actual activity period available from: MARINA (Mont-de-Marsan CDC): 143.550 MHz / 317.500 MHz Mont de Marsan TWR: 122.100 MHz Mont de Marsan APP: 119.700 MHz Toulouse FIS: 121.250 MHz AQUITAINE INFO: 120.575 MHz CLERMONT INFO / APP: 133.725 MHz MONTPELLIER APP: 131.055 MHz / 127.280 MHz MONTPELLIER INFO: 134.375 MHz</p>	<p><b>HOTEL ZRT</b> Actual activity period available from: RAMBERT (Lyon Mont Verdun CDC): 143.550 MHz / 317.500 MHz CLERMONT INFO: 133.725 MHz / 119.375 MHz MONTPELLIER APP: 131.055 MHz / 127.280 MHz MONTPELLIER INFO: 134.375 MHz</p>

ENTRY CONDITIONS
<p><b>INDIA and HOTEL ZRTs</b> GAT/Military Air Traffic: During the activity, compulsory avoidance for aircraft not involved in the exercise.</p>

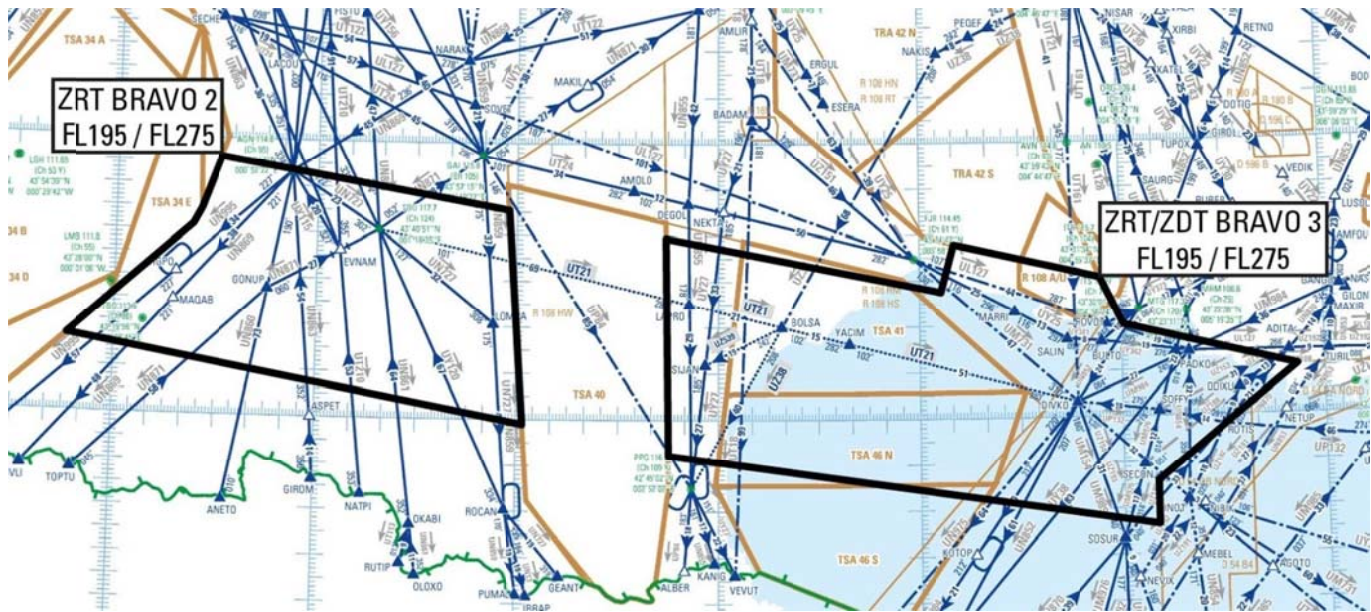
STATUS
<p><b>INDIA and HOTEL ZRTs</b> Temporary restricted areas (ZRTs) replacing the portions of controlled airspaces and restricted areas with which they interfere.</p>

MANAGING AUTHORITY
<p><b>INDIA ZRT:</b> MARINA (Mont-de-Marsan Detection and Control Center) or the center taking over in case of replacement plan. <b>HOTEL ZRT:</b> RAMBERT (Lyon Mont Verdun Detection and Control Center) or the center taking over in case of replacement plan.</p>

SERVICES PROVIDED
<p><b>Military Air Traffic:</b> The control, flight information and alert services are provided in the ZRTs by the managing authority. <b>GAT:</b> Flight information and alert services.</p>

LATERAL AND VERTICAL LIMITS	
INDIA ZRT	HOTEL ZRT
44°32'15.00" N,00°09'46.00" W 44°27'41.00" N,00°08'01.00" E 44°23'55.00" N,00°30'00.00" E 44°18'06.00" N,01°01'19.00" E 44°15'19.17" N,01°17'40.28" E 44°12'30.00" N,01°34'00.00" E 44°08'10.00" N,02°25'00.00" E 44°03'30.00" N,02°36'20.00" E 43°50'34.00" N,03°19'17.00" E 43°53'00.00" N,03°23'30.00" E 43°56'08.00" N,03°33'24.00" E 43°53'30.00" N,03°34'45.00" E 43°42'00.00" N,03°35'38.00" E 43°41'14.00" N,03°36'04.00" E 43°39'10.00" N,03°31'30.00" E 43°54'00.00" N,02°41'00.00" E 43°57'40.00" N,02°28'30.00" E 44°00'40.00" N,02°22'30.00" E 44°02'19.11" N,02°05'47.58" E 44°03'55.78" N,01°49'04.24" E 44°05'30.00" N,01°32'20.00" E 44°08'41.56" N,01°13'28.51" E 44°11'50.00" N,00°54'35.00" E 44°13'49.00" N,00°45'35.00" E 44°16'29.00" N,00°30'00.00" E 44°17'38.00" N,00°18'00.00" E 44°06'51.00" N,00°04'00.00" E 44°06'30.00" N,00°06'00.00" W 44°10'00.00" N,00°07'00.00" W 44°20'00.00" N,00°07'00.00" E 44°32'15.00" N,00°09'46.00" W	The lateral limits are identical to those of LF-R 589 A, LF-R 589 B.
SFC / 6500 FT AMSL.	SFC / 8000 FT AMSL



**A: BELOTE - ONSHORE****BRAVO 2 ZRT and BRAVO 3 ZRT/ZDT****DATES AND TIMES OF ACTIVITY**

BRAVO 2 ZRT	BRAVO 3 ZRT/ZDT
From Tuesday, October 19, 2021 at 2130 to Wednesday, October 20, 2021 at 0020	From Tuesday, October 19, 2021 at 2050 to Wednesday, October 20, 2021 at 0005
Possible postponement by 24 hours, same times.	Possible postponement by 24 hours, same times.

**USER INFORMATION**

<b>Actual activity period available from:</b>	
BORDEAUX ACC:	control frequencies
MARSEILLE ACC:	control frequencies
MARINA (Mont-de-Marsan CDC):	143.550 MHz / 317.500 MHz
RAMBERT (Lyon Mont Verdun CDC):	143.550 MHz / 317.500 MHz

**ENTRY CONDITIONS**

<p><b>BRAVO 2 ZRT</b> GAT/Military Air Traffic: compulsory avoidance except for the following:</p> <ul style="list-style-type: none"> <li>- aircraft involved in the exercise,</li> <li>- aircraft performing assistance, rescue or public safety missions, when avoidance is not compatible with these missions and upon notification to the applicable Military Control and Detection Center (CDC) via the Civil Unit of Coordination (DCC).</li> </ul>
<p><b>BRAVO 3 ZRT / ZDT</b> <u>ZRT part:</u> GAT/Military Air Traffic, compulsory avoidance except for the following:</p> <ul style="list-style-type: none"> <li>- aircraft involved in the exercise,</li> <li>- aircraft performing assistance, rescue or public safety missions, when avoidance is not compatible with these missions and upon notification to the applicable Military Control and Detection Center (CDC) via the Civil Unit of Coordination (DCC).</li> </ul> <p><u>ZDT part:</u> GAT/Military Air Traffic, comply with the instructions of the usual air traffic control units. Air users' attention is drawn to the particularly dangerous nature of the activities performed in these areas. Therefore, during the activity time slots, it is strongly recommended to avoid entering these areas.</p>

**STATUS**

<p><b>BRAVO 2 ZRT:</b> Temporary restricted area (ZRT).</p>
<p><b>BRAVO 3 ZRT / ZDT:</b> Temporary restricted area (ZRT) for the part located within 12 NM from coasts (limit of international waters). Temporary danger area (ZDT) for the part located beyond 12 NM from coasts (limit of international waters).</p>
<p>These areas coexist with the controlled airspaces with which they interfere, and replace the portions of restricted areas with which they interfere.</p>

**MANAGING AUTHORITY**

**BRAVO 2 ZRT:**  
 MARINA (Mont-de-Marsan Detection and Control Center) or the center taking over in case of replacement plan.  
**BRAVO 3 ZRT:**  
 RAMBERT (Lyon Mont Verdun Detection and Control Center) or the center taking over in case of replacement plan.

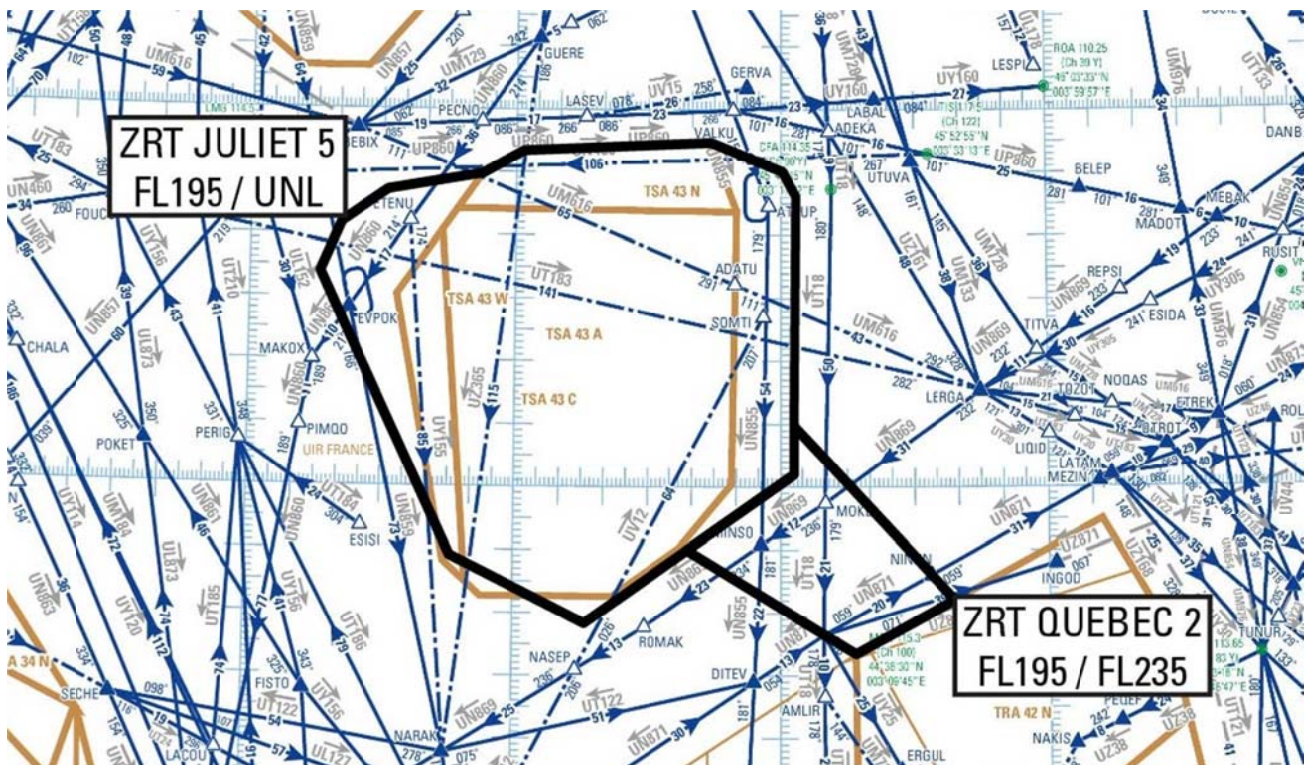
**SERVICES PROVIDED**

**Military Air Traffic:** The control, flight information and alert services are provided in the ZRTs and the ZDT by the managing authorities.  
**GAT:** In the ZRT and ZDT parts coexisting with controlled airspaces, the usual control authorities provide the users authorized to enter with the air traffic services in compliance with the class of the above-mentioned controlled airspaces.

**LATERAL AND VERTICAL LIMITS**

BRAVO 2 ZRT	BRAVO 3 ZRT/ZDT
43°56'00.00" N,00°31'00.00" E 43°45'22.40" N,01°57'39.00" E 42°58'59.20" N,02°01'55.20" E 43°16'40.00" N,00°14'00.00" W 43°41'15.00" N,00°22'55.00" E 43°44'40.00" N,00°25'23.00" E 43°56'00.00" N,00°31'00.00" E	43°39'24.65" N,02°44'23.30" E 43°27'28.00" N,04°06'36.00" E 43°37'48.00" N,04°10'30.00" E 43°30'21.00" N,04°53'47.00" E 43°19'57.00" N,05°00'36.00" E 43°10'30.00" N,05°52'00.00" E 42°46'00.00" N,05°10'00.00" E 42°36'30.00" N,05°10'00.00" E 42°52'17.45" N,02°45'13.55" E 43°39'24.65" N,02°44'23.30" E
FL195 / FL275	

**JULIET 5 and QUEBEC 2 ZRTs**



**DATES AND TIMES OF ACTIVITY**

QUEBEC 2 ZRT	JULIET 5 ZRT
From Tuesday, October 19, 2021 at 2140 to Wednesday, October 20, 2021 at 0145 Possible postponement by 24 hours, same times.	From Tuesday, October 19, 2021 at 2220 to Wednesday, October 20, 2021 at 0145 Possible postponement by 24 hours, same times.

**USER INFORMATION**

**Actual activity period available from:**

BORDEAUX ACC: control frequencies  
 MARSEILLE ACC: control frequencies  
 RAMBERT (Lyon Mont Verdun CDC): 143.550 MHz / 317.500 MHz

**ENTRY CONDITIONS**

**JULIET 5 ZRT and QUEBEC 2 ZRT**

GAT/Military Air Traffic: compulsory avoidance except for the following:

- aircraft involved in the exercise,
- aircraft performing assistance, rescue or public safety missions, when avoidance is not compatible with these missions and upon notification to the applicable Military Control and Detection Center (CDC) via the Civil Unit of Coordination (DCC).

**STATUS**

**JULIET 5 and QUEBEC 2 ZRTs**

Temporary restricted areas (ZRTs) replacing the portions of controlled airspace and restricted areas with which they interfere.

**MANAGING AUTHORITY**

RAMBERT (Lyon Mont Verdun Detection and Control Center) or the center taking over in case of replacement plan.

**SERVICES PROVIDED**

**Military Air Traffic:** The control, flight information and alert services are provided in the ZRT by the managing authority.

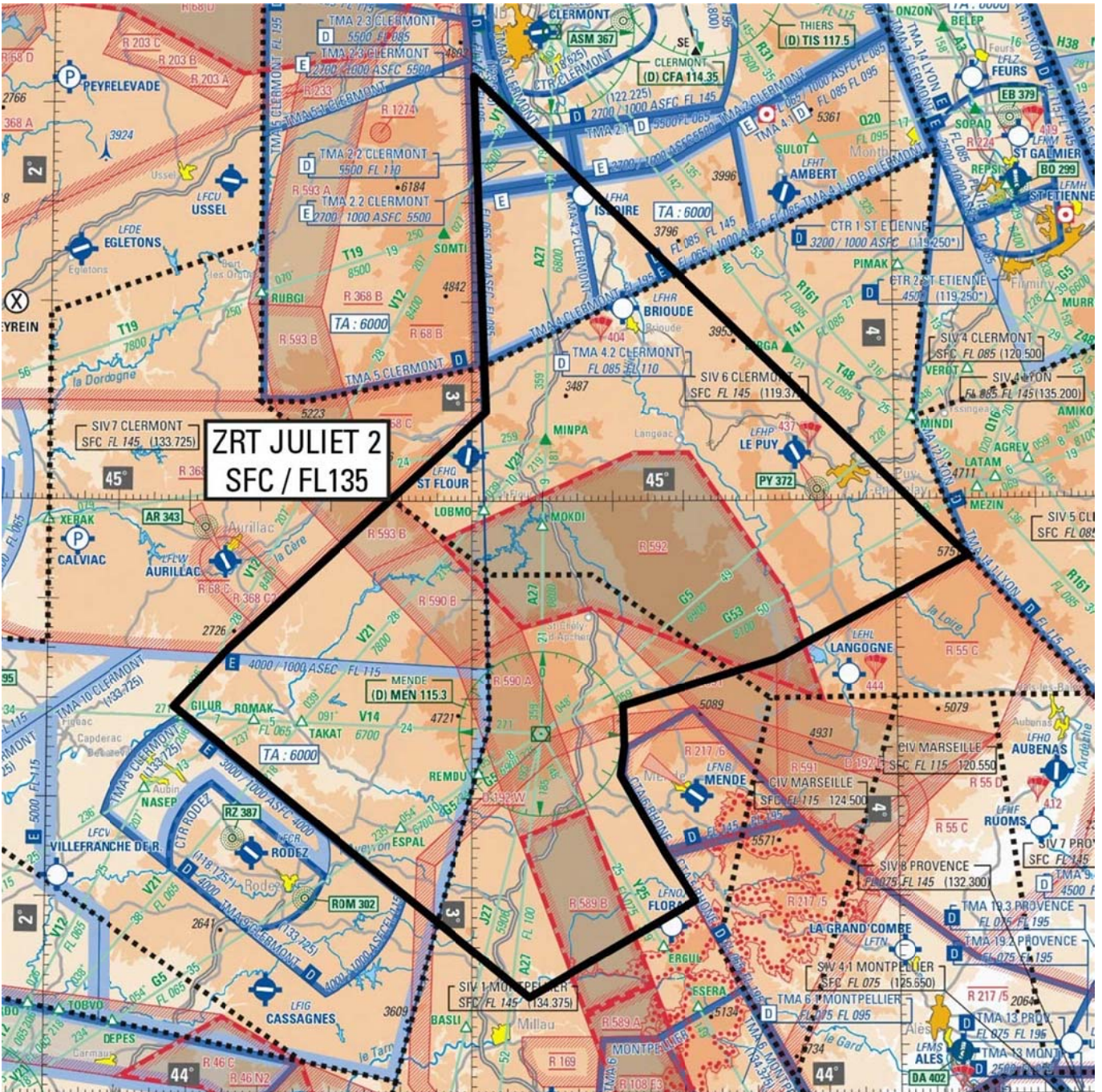
**GAT:** Flight information and alert services.

**LATERAL AND VERTICAL LIMITS**

JULIET 5	QUEBEC 2 ZRT
44°49'04.00" N,01°45'47.00" E	45°09'47.53" N,03°03'02.48" E
45°34'00.00" N,01°15'48.00" E	44°42'06.00" N,03°38'46.74" E
45°41'45.00" N,01°20'30.00" E	44°33'30.00" N,03°16'48.00" E
45°46'58.00" N,01°30'59.00" E	44°50'00.00" N,02°39'00.00" E
45°49'40.00" N,01°52'15.00" E	45°02'00.00" N,03°03'01.00" E
45°53'22.00" N,02°01'41.00" E	45°09'47.53" N,03°03'02.48" E
45°54'44.00" N,02°44'10.00" E	
45°50'03.00" N,03°00'23.00" E	
45°46'07.00" N,03°03'27.00" E	
45°09'29.00" N,03°03'01.00" E	
45°02'00.00" N,03°03'01.00" E	
44°38'21.00" N,02°16'02.00" E	
44°43'43.50" N,02°00'55.90" E	
44°49'04.00" N,01°45'47.00" E	
FL195 / UNL	FL195 / FL235



JULIET 2 ZRT



DATES AND TIMES OF ACTIVITY

JULIET 2 ZRT

From Tuesday, October 19, 2021 at 2220 to Wednesday, October 20, 2021 at 0145

Possible postponement by 24 hours, same times.

## USER INFORMATION

**Actual activity period available from:**  
 CLERMONT INFO / APP: 122.225 MHz / 119.375 MHz / 133.725 MHz  
 MONTPELLIER APP: 131.055 MHz / 127.280 MHz  
 MONTPELLIER INFO: 134.375 MHz  
 RAMBERT (Lyon Mont Verdun CDC): 143.550 MHz / 317.500 MHz

## ENTRY CONDITIONS

**GAT/Military Air Traffic:** compulsory avoidance except for the following:  
 - aircraft involved in the exercise,  
 - GAT/IFR, guaranteed after coordination with RAMBERT (Lyon Mont Verdun CDC) or the replacement CDC, for aircraft inbound for or outbound from AURILLAC (LFLW) and LE PUY (LFHP) aerodromes;  
 - aircraft performing emergency, rescue, customs, police or civil security missions when avoidance is not compatible with these missions, upon notification to the Control and Detection Center via the Civil Unit of Coordination.

## STATUS

Temporary restricted area (ZRT) replacing the portions of airspaces and restricted areas with which it interferes.

## MANAGING AUTHORITY

RAMBERT (Lyon Mont Verdun Detection and Control Center) or the center taking over in case of replacement plan.

## SERVICES PROVIDED

**Military Air Traffic:** The control, flight information and alert services are provided in the ZRTs by the managing authorities.  
**GAT:** Flight information and alert services.

## LATERAL AND VERTICAL LIMITS

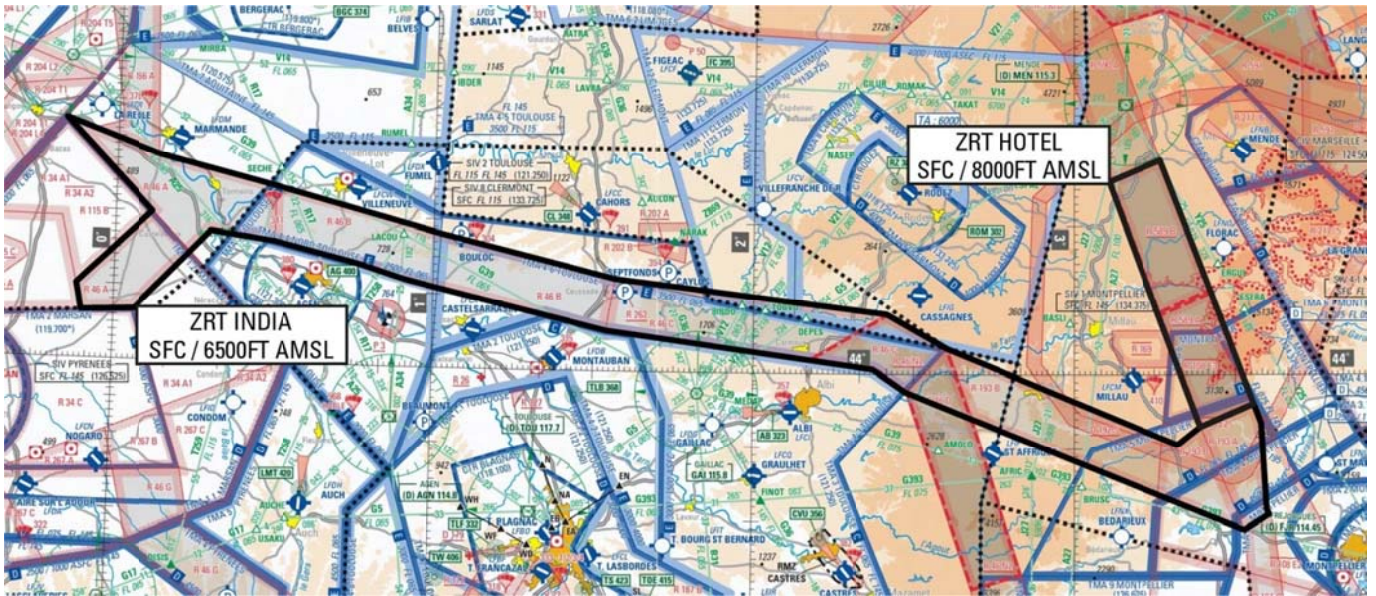
## JULIET 2 ZRT

44°54'16.00" N,04°10'18.00" E  
 45°42'45.00" N,03°00'16.00" E  
 45°09'00.00" N,03°02'00.00" E  
 44°44'40.00" N,02°25'00.00" E  
 44°39'12.00" N,02°17'53.52" E  
 44°20'03.52" N,02°50'52.56" E  
 44°10'00.00" N,03°08'00.00" E  
 44°19'43.00" N,03°31'24.86" E  
 44°24'26.00" N,03°27'12.00" E  
 44°32'21.00" N,03°20'56.00" E  
 44°35'15.00" N,03°21'30.00" E  
 44°39'20.00" N,03°21'20.00" E  
 44°44'00.00" N,03°43'00.00" E  
 44°54'16.00" N,04°10'18.00" E

SFC/FL135



INDIA and HOTEL ZRTs



DATES AND TIMES OF ACTIVITY	
<b>INDIA ZRT</b>	<b>HOTEL ZRT</b>
From Tuesday, October 19, 2021 at 2155 to Wednesday, October 20, 2021 at 0105 Possible postponement by 24 hours, same times.	From Tuesday, October 19, 2021 at 2215 to Wednesday, October 20, 2021 at 0105 Possible postponement by 24 hours, same times.

USER INFORMATION	
<b>INDIA ZRT</b>	<b>HOTEL ZRT</b>
Actual activity period available from:  MARINA (Mont-de-Marsan CDC): 143.550 MHz / 317.500 MHz Mont de Marsan TWR: 122.100 MHz Mont de Marsan APP: 119.700 MHz Toulouse FIS: 121.250 MHz AQUITAINE INFO: 120.575 MHz CLERMONT INFO / APP: 133.725 MHz MONTPELLIER APP: 131.055 MHz / 127.280 MHz MONTPELLIER INFO: 134.375 MHz	Actual activity period available from:  RAMBERT (Lyon Mont Verdun CDC): 143.550 MHz / 317.500 MHz CLERMONT INFO: 133.725 MHz / 119.375 MHz MONTPELLIER APP: 131.055 MHz / 127.280 MHz MONTPELLIER INFO: 134.375 MHz

ENTRY CONDITIONS
<b>INDIA and HOTEL ZRTs</b> GAT/Military Air Traffic: During the activity, compulsory avoidance for aircraft not involved in the exercise.

STATUS
<b>INDIA and HOTEL ZRTs</b> Temporary restricted areas (ZRTs) replacing the portions of controlled airspaces and restricted areas with which they interfere.

MANAGING AUTHORITY
INDIA ZRT: MARINA (Mont-de-Marsan Detection and Control Center) or the center taking over in case of replacement plan. HOTEL ZRT: RAMBERT (Lyon Mont Verdun Detection and Control Center) or the center taking over in case of replacement plan.

SERVICES PROVIDED
<b>Military Air Traffic:</b> The control, flight information and alert services are provided in the ZRTs by the managing authority. <b>GAT:</b> Flight information and alert services.



LATERAL AND VERTICAL LIMITS	
INDIA ZRT	HOTEL ZRT
44°32'15.00" N,00°09'46.00" W 44°27'41.00" N,00°08'01.00" E 44°23'55.00" N,00°30'00.00" E 44°18'06.00" N,01°01'19.00" E 44°15'19.17" N,01°17'40.28" E 44°12'30.00" N,01°34'00.00" E 44°08'10.00" N,02°25'00.00" E 44°03'30.00" N,02°36'20.00" E 43°50'34.00" N,03°19'17.00" E 43°53'00.00" N,03°23'30.00" E 43°56'08.00" N,03°33'24.00" E 43°53'30.00" N,03°34'45.00" E 43°42'00.00" N,03°35'38.00" E 43°41'14.00" N,03°36'04.00" E 43°39'10.00" N,03°31'30.00" E 43°54'00.00" N,02°41'00.00" E 43°57'40.00" N,02°28'30.00" E 44°00'40.00" N,02°22'30.00" E 44°02'19.11" N,02°05'47.58" E 44°03'55.78" N,01°49'04.24" E 44°05'30.00" N,01°32'20.00" E 44°08'41.56" N,01°13'28.51" E 44°11'50.00" N,00°54'35.00" E 44°13'49.00" N,00°45'35.00" E 44°16'29.00" N,00°30'00.00" E 44°17'38.00" N,00°18'00.00" E 44°06'51.00" N,00°04'00.00" E 44°06'30.00" N,00°06'00.00" W 44°10'00.00" N,00°07'00.00" W 44°20'00.00" N,00°07'00.00" E 44°32'15.00" N,00°09'46.00" W	The lateral limits are identical to those of LF-R 589 A, LF-R 589 B.
SFC / 6500FT AMSL.	SFC / 8000FT AMSL

## ADDITIONAL PROVISIONS

**Choice of the Belote plan.**

Depending on the weather forecast, on Day D at 1100 the Air Force chooses to implement a plan:

**Belote "Nominal":** use of areas B2, B3, D1, D2, E, Q2, J2, J5, H, I.

Additional activities:

- LF-TRA 10 A (FL195 / FL295): from 19/10/21 at 2120 to 20/10/21 at 0145 (possible postponement by 24 hours),
- LF-TRA 10 B (FL195 / FL285): from 19/10/21 at 2120 to 20/10/21 at 0145 (possible postponement by 24 hours),
- LF-TSA 34 (FL195 / FL325): from 19/10/21 at 2140 to 20/10/21 at 0025 (possible postponement by 24 hours),
- LF-TSA 40 (FL195/ FL305): from 19/10/21 at 2120 to 20/10/21 at 0010 (possible postponement by 24 hours),
- LF-TRA 42 N and S (FL195/ FL325): from 19/10/21 at 2015 to 20/10/21 at 0145 (possible postponement by 24 hours),
- LF-R 34 A2: from 19/10/21 at 2140 to 20/10/21 at 0035 (possible postponement by 24 hours),
- LF-R 217-1, 2, 3 and 4 can be activated by Istres Approach (possible postponement by 24 hours).
- LF-TSA 44 ABCD (FL195 / FL325): on 19/10/21 from 1945 to 2305 (possible postponement by 24 hours),
- LF-R 20 H3: from 19/10/21 at 2300 to 20/10/21 at 0215 (possible postponement by 24 hours),
- LF-R 368 A, B, C1, C2: from 19/10/21 at 2215 to 20/10/21 at 0200 (possible postponement by 24 hours),
- LF-R 68 A, B, C: from 19/10/21 at 2215 to 20/10/21 at 0200 (possible postponement by 24 hours).

**Belote "Onshore"** (case of bad weather in the Mediterranean): use of areas B2, B3, Q2, J2, J5, H, I.

Additional activities:

- LF-TRA 10 A (FL195 / FL295): from 19/10/21 at 2120 to 20/10/21 at 0145 (possible postponement by 24 hours),
- LF-TRA 10 B (FL195 / FL285): from 19/10/21 at 2120 to 20/10/21 at 0145 (possible postponement by 24 hours),
- LF-TSA 34 (FL195 / FL325): from 19/10/21 at 2140 to 20/10/21 at 0025 (possible postponement by 24 hours),
- LF-TSA 40 (FL195/ FL305): from 19/10/21 at 2120 to 20/10/21 at 0010 (possible postponement by 24 hours),
- LF-TRA 42 N and S (FL195/ FL325): from 19/10/21 at 2015 to 20/10/21 at 0145 (possible postponement by 24 hours),
- LF-R 34 A2: from 19/10/21 at 2140 to 20/10/21 at 0035 (possible postponement by 24 hours),
- LF-R 217-1, 2, 3 and 4 can be activated by Istres Approach (possible postponement by 24 hours).
- LF-R 20 H3: from 19/10/21 at 2300 to 20/10/21 at 0215 (possible postponement by 24 hours),
- LF-R 368 A, B, C1, C2: from 19/10/21 at 2215 to 20/10/21 at 0200 (possible postponement by 24 hours),
- LF-R 68 A, B, C: from 19/10/21 at 2215 to 20/10/21 at 0200 (possible postponement by 24 hours).

**Aerodromes**

Aircraft in GAT/IFR, outbound from or inbound for AURILLAC (LFLW), LE PUY LOUDES (LFHP) and RODEZ-MARCILLAC (LFCR) aerodromes in the event of a delay on the regular line, are guaranteed after coordination with the relevant management authority (Mont-de-Marsan CDC).

## AUTHORITIES TO BE CONTACTED

**Before the exercise:**

CFAS / BRIGADE OPERATIONNELLE / SC5 AIR PLANS  
ELEMENT AIR RATTACHE 921  
95155 TAVERNY CEDEX  
Tel.: 01 82 41 36 55 / 01 82 41 38 81  
TELEGRAPHIC ADDRESS  
AFTN: LFPJZXVS  
CFAS / BRIGADE OPERATIONNELLE: 01 532X  
For SC5 AIR PLANS / BUREAU DIVISION CHASSE.

**During the exercise:**

Airspace managing authority (OGE)