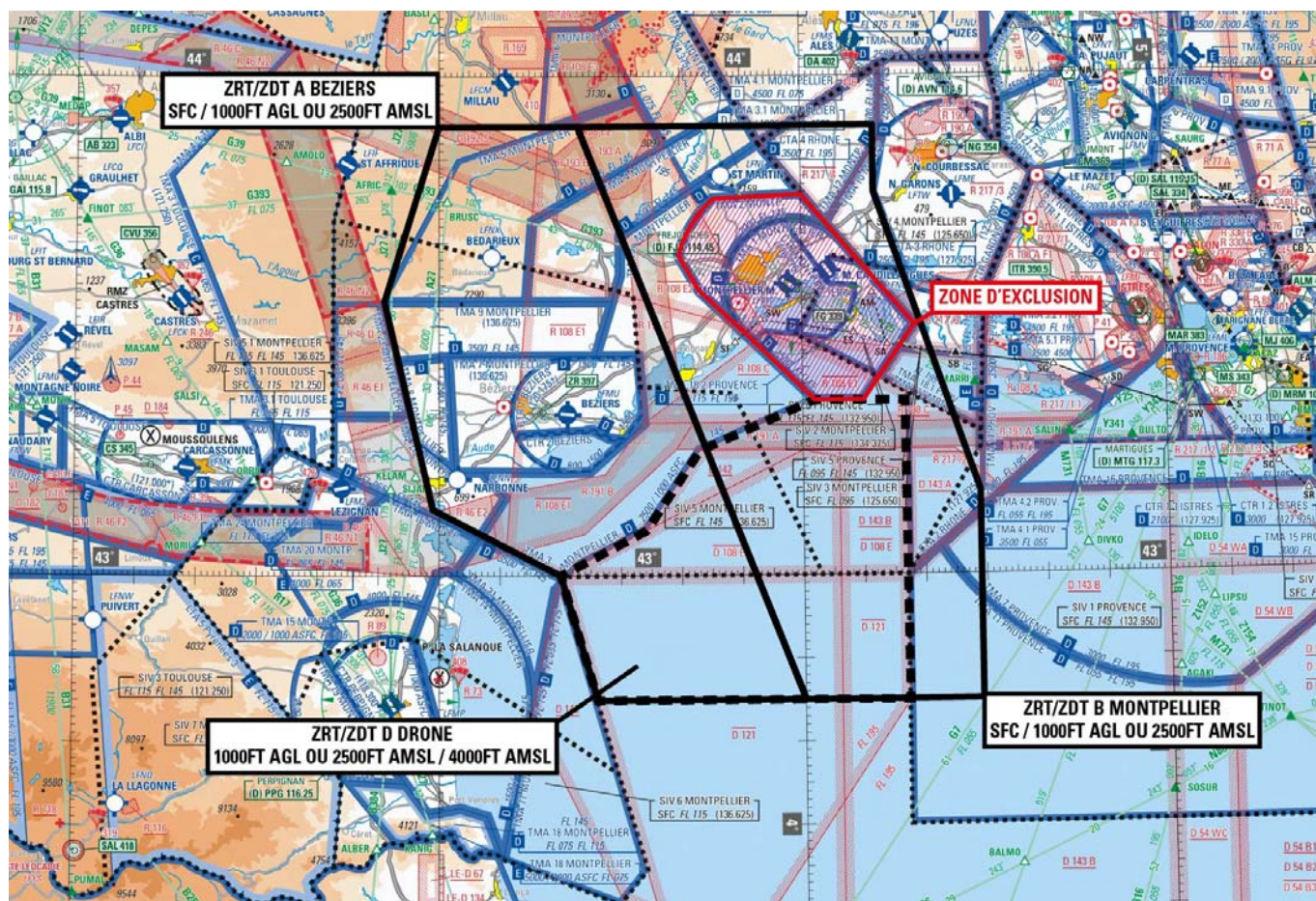


Subject : Creation of 4 temporary restricted areas (ZRT) for the 2021 CORMORAN exercise in the region of Montpellier, Béziers and in Corsica

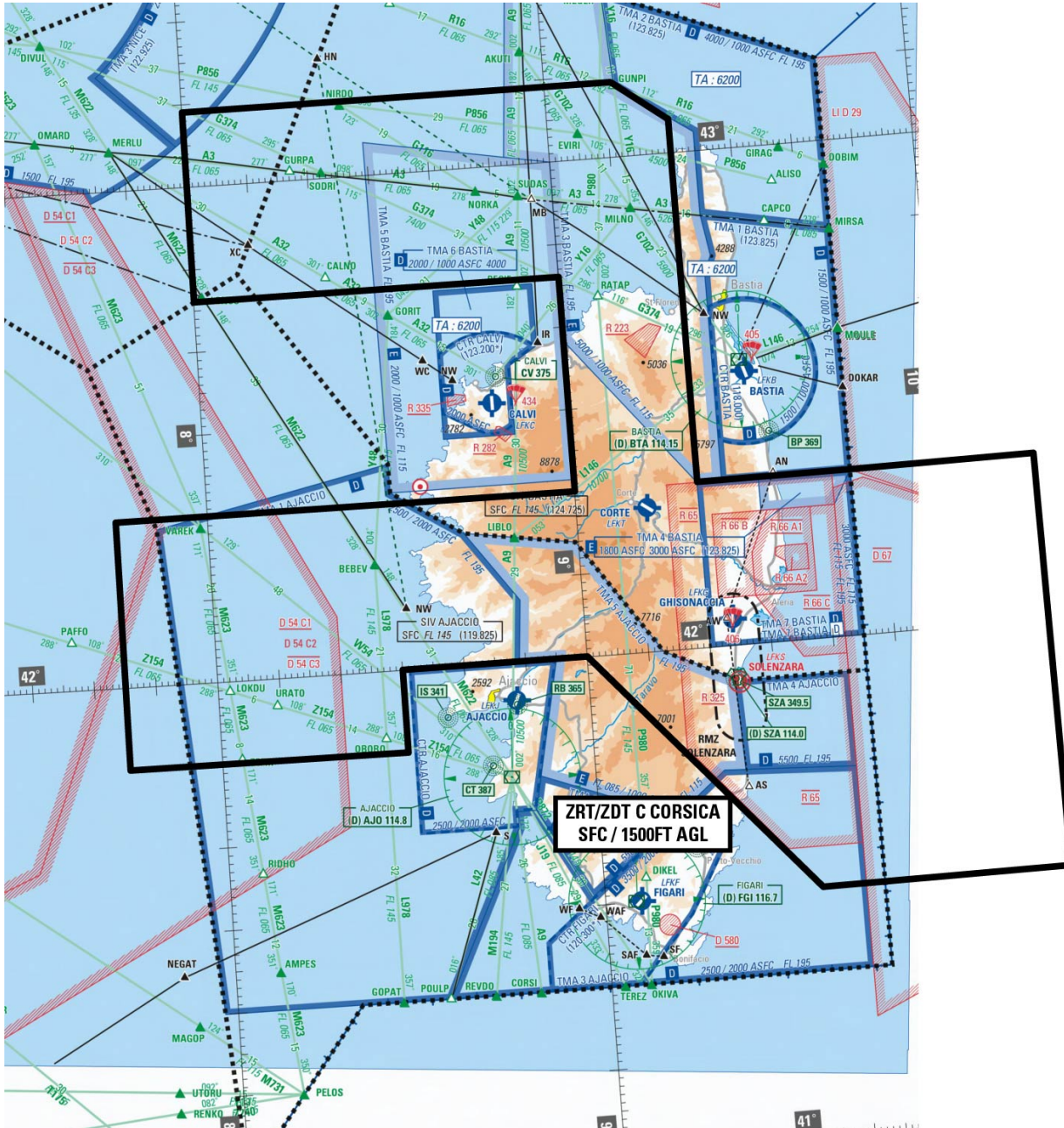
With effect : From Thursday October 7, 2021 to Friday October 15, 2021

Location : FIRs : MARSEILLE LFMM – AD : Montpellier Méditerranée LFMT, Montpellier Candillargues LFNG, Béziers Vias LFMU, Bédarieux LFNX, Narbonne LFNN, St Martin LFNL, Corte LFKT, Solenzara LFKS, Ghisonaccia-Alzitone LFKG

BEZIERS ZRT/ZDT A, MONTPELLIER ZRT/ZDT B and DRONE ZRT/ZDT D



CORSICA ZRT/ZDT C



ACTIVITY

Exercise involving a large number of Defense helicopters and unmanned aircraft flying in Military Air Traffic conditions, in all flight conditions, at low altitude, by night.

DATES AND TIMES OF ACTIVITY

BEZIERS ZRT/ZDT A active :

From October 7 to 8, 2021 : from 1830 to sunrise-30 min (possible postponement from October 8 to 9, 2021: from 1830 to sunrise-30 min).
 From October 10 to 11, 2021 : from 1830 to sunrise-30 min (possible postponement from October 11 to 12, 2021: from 1830 to sunrise-30 min).

MONTPELLIER ZRT/ZDT B and DRONE ZRT/ZDT D active :

From October 7 to 8, 2021 : from sunset+30 min to sunrise-30 min (possible postponement from October 8 to 9, 2021 : from sunset+30 min to sunrise-30 min).
 From October 10 to 11, 2021 : from sunset+30 min to sunrise-30 min (possible postponement from October 11 to 12, 2021 : from sunset+30 min to sunrise-30 min).

CORSICA ZRT/ZDT C active :

From October 13 to 14, 2021 : (possible postponement from October 14 to 15, 2021) : from sunset+30 min to sunrise-30 min.

MANAGING AUTHORITY

Exercise Director

USER INFORMATION

Actual activity period available from :

RHONE CTL : 127.925 MHz
MARSEILLE CTL : 128.850 MHz
PROVENCE INFO : 132.950 MHz, 124.350 MHz, 134.800 MHz
CAMARGUE CTL : 127.925 MHz
MONTPELLIER APP : 125.650 MHz, 134.375 MHz, 136.625 MHz
MONTPELLIER INFO : 135.850 MHz
AJACCIO INFO : 119.825 MHz
BASTIA INFO : 124.725 MHz

STATUS

Temporary restricted areas (ZRTs) or temporary danger areas (ZDTs) replacing the airspaces and parts of airspaces with special status with which they interfere.

Temporary restricted areas (ZRTs) for the part located within 12 NM from coasts (limit of territorial waters).

Temporary danger areas (ZDT) for the part located beyond 12 NM from coasts (limit of territorial waters).

ENTRY CONDITIONS

GAT and Military Air Traffic :

ZRT parts : compulsory avoidance except for the following :

- aircraft involved in the exercise ;
- aircraft performing emergency, rescue, customs, police or civil security missions when avoidance is not compatible with these missions, after contacting the managing authority ;
- night-time VFRs on the continent-Corsica transit with transponder 7741.

ZDT parts : air users' attention is drawn to the particularly dangerous nature of the activities performed in these areas.
Therefore, during the activity time slots, it is strongly recommended to avoid entering these areas.

SERVICES PROVIDED

Military Air Traffic : control, flight information and alert.

GAT : the flight information and alert services are provided by the usual service providers.

LATERAL AND VERTICAL LIMITS

BEZIERS ZRT/ZDT A	MONTPELLIER ZRT/ZDT B	CORSICA ZRT/ZDT C	DRONE ZRT/ZDT D
<p><u>Lateral limits</u></p> <p>43°54'00.00" N,003°00'00.00" E 43°54'00.00" N,003°23'00.00" E 42°45'00.00" N,004°00'00.00" E 42°45'00.00" N,003°26'00.00" E 43°00'00.00" N,003°20'00.00" E 43°08'00.00" N,002°59'00.00" E 43°33'00.00" N,002°51'00.00" E 43°54'00.00" N,003°00'00.00"E</p> <p><u>Vertical limits</u></p> <p>SFC / 1000 ft ASFC or 2500 ft AMSL</p>	<p><u>Lateral limits</u></p> <p>43°54'00.00" N,003°23'00.00" E 43°54'00.00" N,004°12'00.00" E 43°46'00.00" N,004°12'00.00" E 43°10'00.00" N,004°29'00.00" E 42°45'00.00" N,004°29'00.00" E 42°45'00.00" N,004°00'00.00" E 43°54'00.00" N,003°23'00.00" E</p> <p>excluding MONTPELLIER CTR and TMA 1 and 2</p> <p><u>Vertical limits</u></p> <p>SFC / 1000 ft ASFC or 2500 ft AMSL</p>	<p><u>Lateral limits</u></p> <p>43°09'00"N,008°00'00"E 43°09'00"N,009°11'00"E 43°04'00"N,009°20'00"E 42°20'00"N,009°20'00"E 42°20'00"N,009°45'00"E 42°20'00"N,010°15'00"E 41°30'00"N,010°15'00"E 41°30'00"N,009°35'00"E 42°00'00"N,009°00'00"E 42°00'00"N,008°30'00"E 41°50'00"N,008°30'00"E 41°50'00"N,007°45'00"E 42°20'00"N,007°45'00"E 42°20'00"N,009°00'00"E 42°46'00"N,009°00'00"E 42°46'00"N,008°00'00"E 43°09'00"N,008°00'00"E</p> <p><u>Vertical limits</u></p> <p>SFC / 1500 ft ASFC</p>	<p><u>Lateral limits</u></p> <p>43°00'00.00" N,003°20'00.00" E 43°05'24.00" N,003°34'05.00" E 43°15'00.00" N,003°42'58.00" E 43°21'00.00" N,004°02'00.00" E 43°20'54.39" N,004°16'48.29" E 42°44'55.40" N,004°17'01.27" E 42°45'00.00" N,003°26'00.00" E 43°00'00.00" N,003°20'00.00" E</p> <p><u>Vertical limits</u></p> <p>1000 ft ASFC or 2500 ft AMSL / 40000 ft AMSL</p>

AUTHORITIES TO BE CONTACTED

<p><u>Before the activity :</u></p> <p>4th BAC : Phone : +33 (0)4 63 08 07 56 / 08 41.</p> <p>COMALAT / Airspace section : Phone : +33 (0)1 41 28 82 13 / 14.</p>	<p><u>During the activity :</u></p> <p>Exercise Director : Phone : +33 (0)6 85 03 69 93.</p>
--	---

ADDITIONAL INFORMATION

- ZRT/ZDT D DRONE : Sea overflight only complying with a minimum distance of 1 NM from the coast.
- The sport and recreational air activities located within the ZRTs are suspended when the ZRTs are active.
- The areas of the RTBA network affected by the ZRTs will not be activated when the ZRTs are active.