



**Temporary replacement of the VOR/DME « PPG ».**

**Subject : Impact on aerodrome IFR procedures and on the ATS route network in lower airspace.  
Cancels and replaces the AIRAC AIP SUP 195/21**

**With effect : From 30 September 2021 to 26 January 2022**

Location : FIR : Marseille LFMM, Bordeaux LFBB – AD : Perpignan Rivesaltes LFMP, Montpellier Méditerranée LFMT, Béziers Vias LFMU, Istres le Tubé LFMI, Toulouse Blagnac LFBO, Carcassonne Salvaza LFMK, Pamiers lès Pujols LFDJ.

**1. Commissioning of a provisional VOR/DME without change of call sign (PPG) :**

As part of the renewal of the Perpignan Rivesaltes VOR/DME "PPG", will be unavailable from Thursday 9 September 2021 (AIRAC cycle 09/21) to Wednesday 26 January 2022 included.

To compensate for this interruption, a temporary Mobile VOR/DME will be put into service nearby (140 m) from 9 September 2021 until 26 January 2022 included.

This temporary mobile VOR/DME **will keep the same call sign (PPG) and will have the specific characteristics defined below :**

**Temporary mobile VOR/DME**

**Call sign : PPG**

**Frequency : 117.2 MHz / 119 X**

**Location : 42°44'57.6"N 002°52'04.8"E**

A NOTAM will confirm the shutdown of the PPG VOR/DME published in AIP France (ENR 4.1) and the commissioning of the replacement VOR/DME (FIR NOTAM and NOTAM per affected airfield).

**2. Impacts on approach, holding, departure (SID) and arrival (STAR) procedures :**

Given the proximity of the location of the temporary mobile VOR/DME to the "PPG" VOR/DME which is temporarily replaced, the radials and DME distances of the PPG-based procedures remain unchanged.

Within this framework, the trajectories of the various instrument flight procedures of the aerodromes concerned (see ANNEX 1) remain identical with the **exception of the APIs of the ILS Z, LOC Z and VOR RWY 33 approach procedures of Perpignan-Rivesaltes (LFMP) - see ANNEX 2**

**Warning :** During the validity of this SUP AIP the conventional omnidirectional BAMGO Type B RWY 15/33 **"BAMGO 4N" and "BAMGO 4S" departures of Perpignan-Rivesaltes (LFMP)** (ref. AIP France AD2 LFMP SID RWY ALL CONV BAMGO) **are not usable.**

A NOTAM will confirm the unavailability of the BAMGO 4N and BAMGO 4S departures (NOTAM LFMP).

**3. Impacts on the ATS route network (AWY) and on standard transit routes in low-level airspace :**

The provisional mobile VOR/DME replaces the PPG VOR/DME published in AIP France (ENR 4.1) in the definition :

- ATS routes (AWY réf AIP France ENR3.1) :
  - A27
  - B384
  - G36
  - J27
  - R17
  
- Standardised transit routes (réf AIP France AD2 LFMT ARC 02)
  - AKUNU – PPG
  - SUBIL – PPG

**Impacted maps and aeronautical information components**

The provisional mobile VOR/DME defined in §1 replaces the PPG VOR/DME published in AIP France for the following procedures (AIP France reference in brackets) :

**Perpignan Rivesaltes (LFMP)**

- **Departure procedures**  
All SID CONV RWY15 (ref. AD2 LFMP SID RWY15 CONV)  
All SID CONV RWY33 (ref. AD2 LFMP SID RWY33 CONV)  
Reminder : Conventional omnidirectional BAMGO departures Type B RWY 15/33 **BAMGO 4N/4S** (ref. AIP France AD2 LFMP SID RWY ALL CONV BAMGO) **NOT USABLE**.
- **Arrival procedures**  
STAR FJR 2P – SUBIL 2P – KANIG 2P – HLDG PPG – HLDG LANET (ref. AD2 LFMP STAR RWY ALL RNAV CONV)
- **Approach**  
VPT RWY 15 (ref. AD2 LFMP IAC RWY15 VPT)

**Montpellier Méditerranée (LFMT)**

- **Departure procedures**  
SID CONV KELAM 6N/6S and PPG 6N/6S (ref. AD2 LFMT SID RWY12L-30R CONV and AD2 LFMT SID RWY 12L-30R CONV INI)
- **Arrival procedures**  
STAR KELAM 6T and PPG 6T (ref. AD2 LFMT STAR RWY ALL RNAV CONV)
- **Holding**  
HLDG AKUNU (ref. AD2 LFMT ARC 01/02)

**Béziers Vias (LFMU)**

- **Departure procedures**  
SID KELAM 6E and AFRIC 6E (ref. AD2 LFMU SID RWY09 CONV)  
SID KELAM 6W and AFRIC 6W (ref. AD2 LFMU SID RWY27 CONV)
- **Arrival procedures**  
STAR SIJAN 2Z and AFRIC 2Z (ref. AD2 LFMU STAR RWY ALL CONV)
- **Approach**  
NDB RWY 09 (ref. AD2 LFMU IAC RWY 09 NDB)

**Toulouse Blagnac (LFBO)**

- **Departure procedures**  
SID PPG 5A (ref. AD2 LFBO SID RWY14 CONV and AD2 LFBO SID RWY 14L-14R CONV INI)  
SID PPG 5B (ref. AD2 LFBO SID RWY32 CONV and AD2 LFBO SID RWY 32L-32R CONV INI)

**Carcassonne Salvaza(LFMK)**

- **Departure procedures**  
SID PPG 2E (ref. AD2 LFMK SID RWY10 CONV)  
SID PPG 2W (ref. AD2 LFMK SID RWY28 CONV) **Pamiers Iès Pujols (LFDJ)**
- **Arrival procedures**  
Specified arrival PPG NDB RWY 09 (ref. AD2 LFDJ IAC RWY09 NDB)

**Istres le Tubé (LFMI)**

- **Departure procedures**  
SID PPG 7D (ref. AD2 LFMI SID RWY ALL RNAV CONV)
- **Arrival procedures**  
STAR PPG 3D (ref. AD2 LFMI STAR RWY ALL CONV)

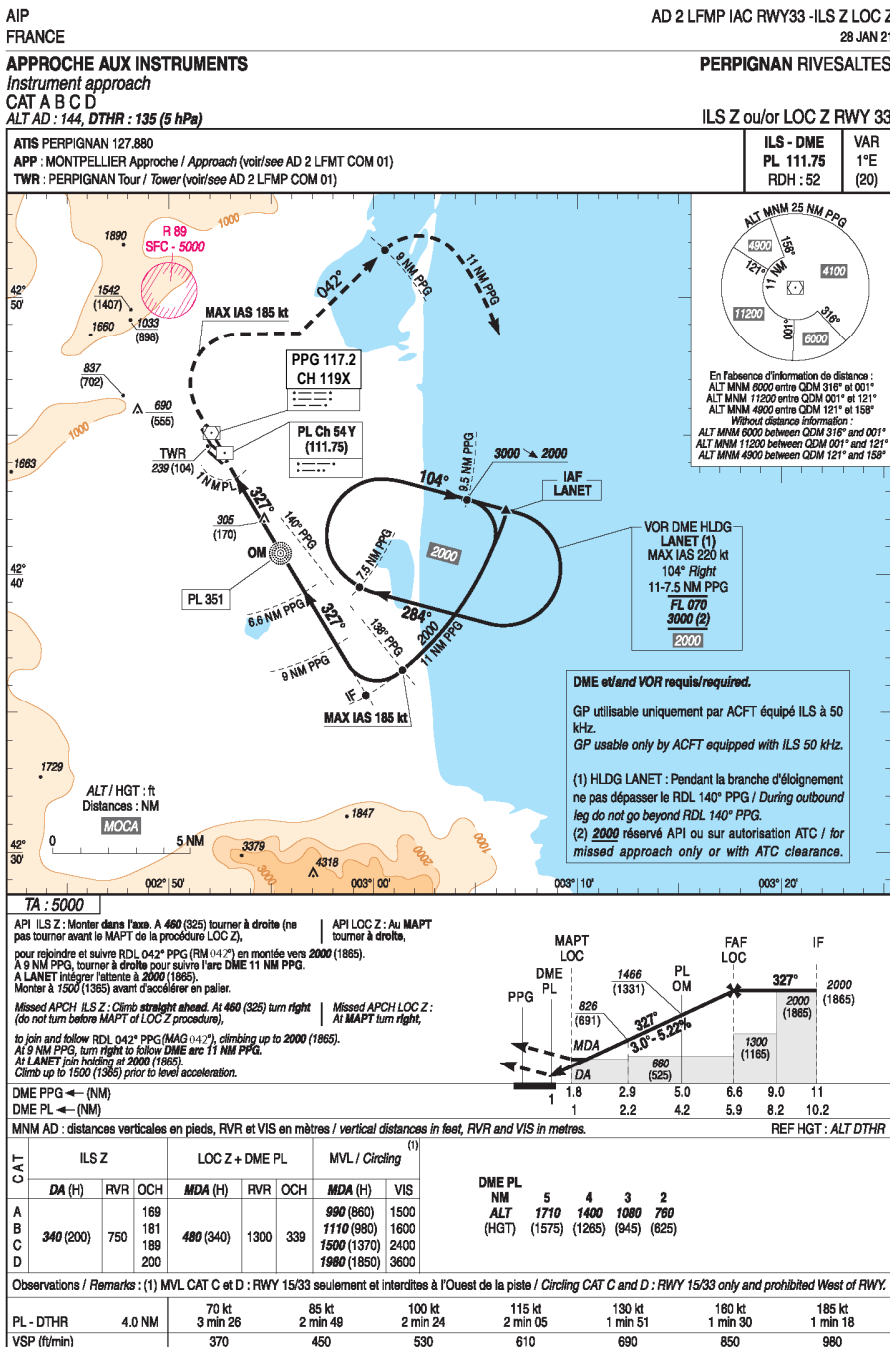
**Amended maps and aeronautical information components**

**Perpignan Rivesaltes (LFMP)**

The temporary use of the provisional mobile VOR/DME to replace the PPG VOR/DME published in AIP France changes the API segment definition of PPG-based conventional approach procedures.

The approach procedures and charts (IAC) in force during the duration of this SUP AIP are as follows :

- ILS Z and LOC Z RWY 33 (ref. AD2 LFMP IAC RWY 33 – ILS Z LOC Z)



➔ New PPG FREQ

VOR RWY 33 (ref. AD2 LFMP IAC RWY 33 VOR)

AIP  
FRANCE

AD 2 LFMP IAC RWY33 VOR  
28 JAN 21

APPROCHE AUX INSTRUMENTS

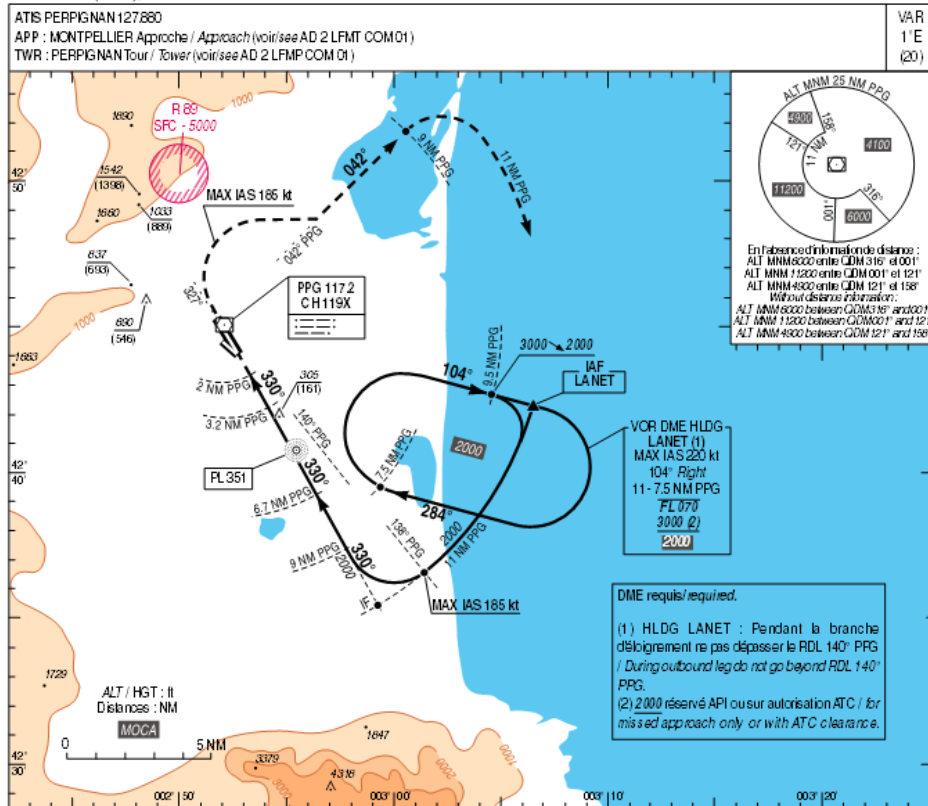
PERPIGNAN RIVESALTES

Instrument approach

CAT A B C D

ALT AD : 144 (6 hPa), DTHR : 135

VOR RWY 33

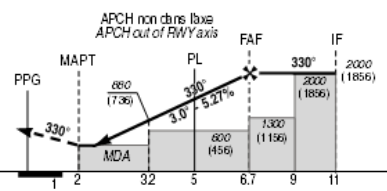


TA : 5000

API : Monteur RDL 150° PPG (RM 330°).  
 A PPG, tourner à droite pour rejoindre et suivre RDL 042° PPG (RM 042°) en montée vers 2000 (1856). A 9 NM PPG, tourner à droite pour suivre l'arc DME 11 NM PPG. A LANET intégrer la pente à 2000 (1856). Monter à 1500 (1356) avant d'accélérer en palier.

Missed APCH : Climb RDL 150° PPG (MAG 330°).  
 At PPG, turn right to join and follow RDL 042° PPG (MAG 042°) climbing up to 2000 (1856). At 9 NM PPG, turn right to follow DME arc 11 NM PPG. At LANET, join holding at 2000 (1856). Climb up to 1500 (1356) prior to level acceleration.

PPG ← (NM)  
 DTHR ← (NM)



MNMDA : distances verticales en pieds, RVFR et VIS en mètres / vertical distances in feet, RVFR and VIS in metres.

CAT	VOR+DME PPG			MVL / Circling		DME PPG
	MDA (H)	RVFR	COCH	MDA (H)	VIS	
A				990 (860)	1500	6 5 4 3
B	530 (390)	1500	362	1110 (960)	1600	ALT 1780 1460 1140 820
C				1500 (1370)	2400	(HGT) (1636) (1316) (996) (676)
D				1980 (1850)	3300	

Observations/Remarks : (1) MVL CAT C et D : RWY 1533 seulement et interdites à l'Ouest de la piste / Circling CAT C and D : RWY 1533 only and prohibited West of RWY.

VSP (ft/min)	70 kt	85 kt	100 kt	115 kt	130 kt	160 kt	185 kt
	370	450	530	610	690	880	960



→ New PPG FREQ  
 → New radial

© SIA