



Subject : Creation of 14 temporary restricted areas (ZRTs) for the 2021 GORGONES exercise

Validity : From October 5 to October 18, 2021

Location: FIRs: Bordeaux LFBB, Marseilles LFMM - AD: Ussel LFCU, Saint Flour LFHQ, Issoire LFHA, Clermont Ferrand Auvergne LFLC

ACTIVITY

National exercise involving a large number of defense aircraft, drones and parachute drops operating day and night, in all flight conditions.

STATUS

SAINT FLOUR, SAINT OURS, ALLANCHES, ISSOIRE, MONTGRELEIX, MESSEIX, UAV A/B/C/D/E/F/G/H ZRTs:

Temporary restricted areas (ZRTs) replacing the airspace parts with which they interfere.

ENTRY CONDITIONS

SAINT FLOUR, SAINT OURS, ALLANCHES, ISSOIRE, MONTGRELEIX, MESSEIX, UAV A/B/C/D/E/F/G/H ZRTs:

GAT/OAT:

compulsory avoidance except for the following:

- aircraft involved in the exercise,
- aircraft performing assistance, rescue or public safety missions, when avoidance is not compatible with these missions, after obtaining the agreement of the managing authority.

SERVICES PROVIDED

SAINT FLOUR, SAINT OURS, ALLANCHES, ISSOIRE, MONTGRELEIX, MESSEIX ZRTs:

OAT: The control, flight information and alert services are provided in the ZRT by the managing authority.

GAT: Flight information and alert services provided by the managing authority.

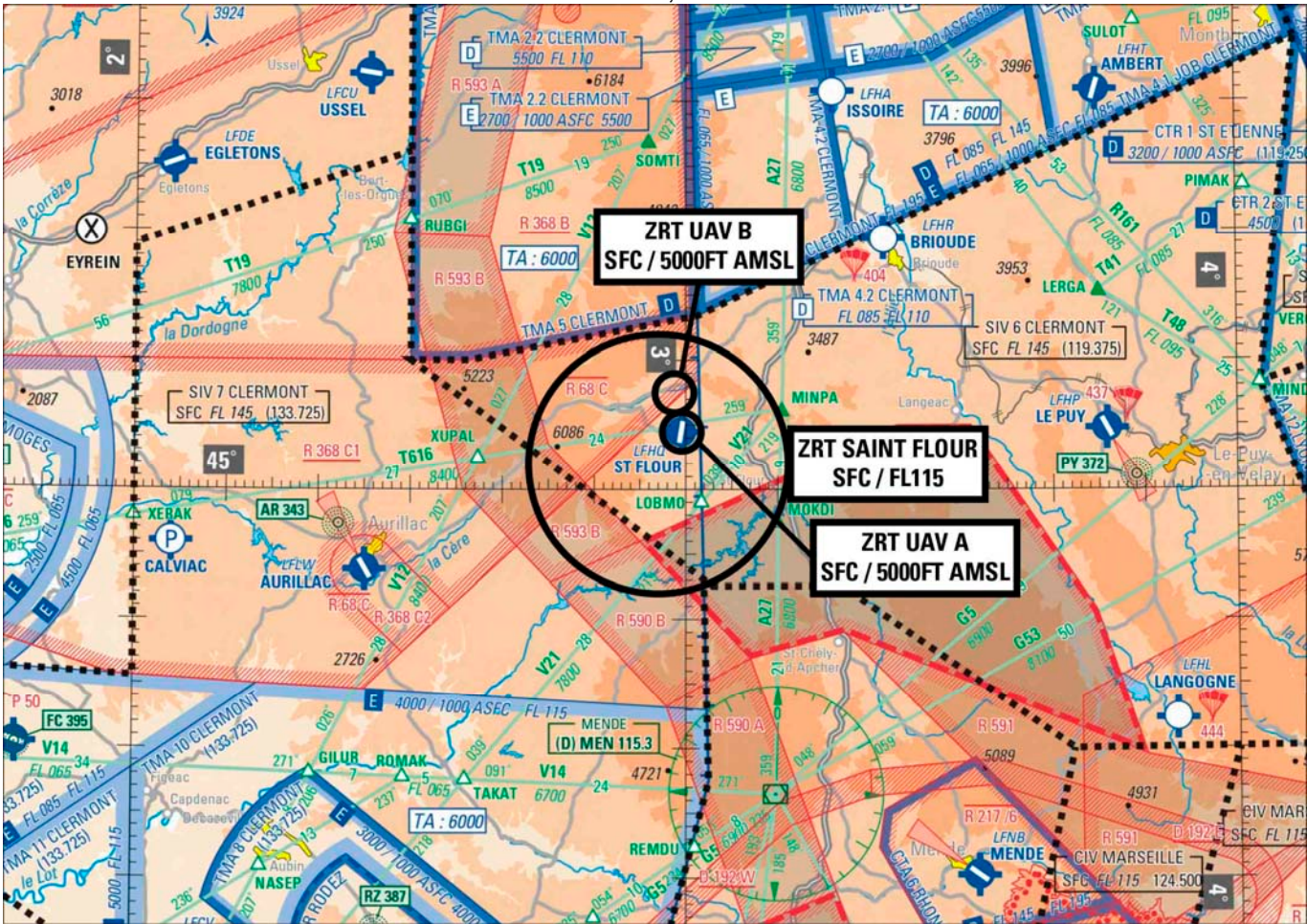
UAV A/B/C/D/E/F/G/H ZRTs:

GAT/OAT: Flight information and alert services provided by RAMBERT (or replacement CDC).

ADDITIONAL INFORMATION SPECIAL PROVISIONS

It will be possible to activate all the ZRTs during the specified time slots with 24 hours' notice, forecasts available from the Exercise Director (DIREX).

SAINT FLOUR ZRT, UAV A/B ZRTs



DATES AND TIMES OF ACTIVITY RELEVANT AUTHORITIES CONTACT DETAILS

SAINT FLOUR ZRT: one 45-min time slot can be activated every day

- Oct 5: 2000-2359
- Oct 6: 0000-0800 and 1530-2359

UAV A ZRT: a maximum of three 1h30 time slots can be activated every day

- Oct 5: 0000-0800 and 2000-2359
- Oct 6: 0000-0800 and 2000-2359
- Oct 7: 2000-2359
- Oct 8: 0000-0800

UAV B ZRT: a maximum of three 1h30 time slots can be activated every day

- Oct 5: 2000-2359
- Oct 6: 0000-0800 and 0930-2359
- Oct 7: 2000-2359
- Oct 8: 0000-0800, 1030-1330 and 1500-2359
- Oct 9: 0000-2359

USER INFORMATION

SAINT FLOUR ZRT and UAV A/B ZRTs:

Actual activity period available from:
 Clermont INFO: 119.375 MHz
 Rambert (Lyon Mont Verdun CDC): 143.550 MHz / 317.500 MHz

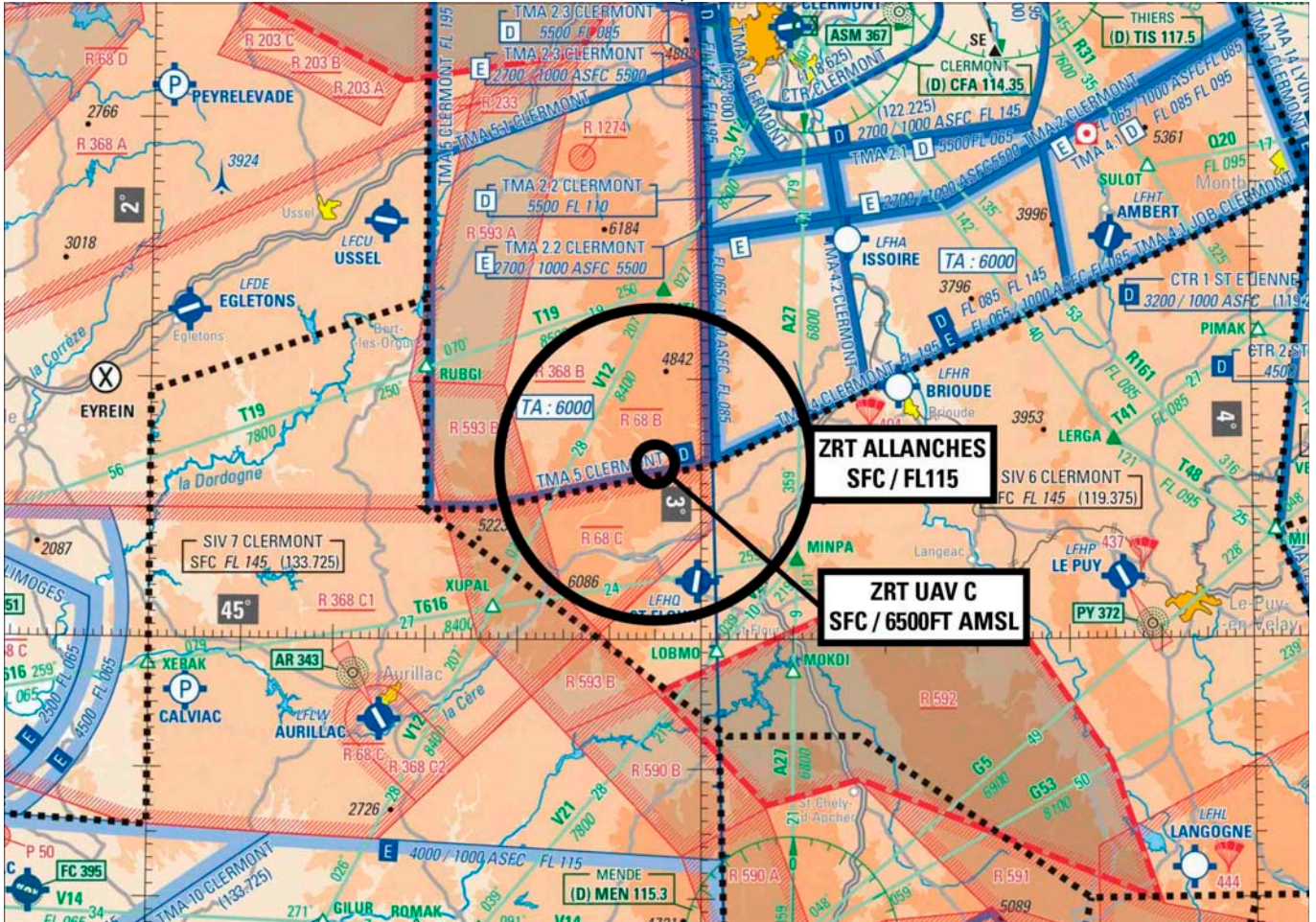
MANAGING AUTHORITY

SAINT FLOUR ZRT
 Rambert (Lyon Mont Verdun CDC) or replacement CDC.

UAV A/B ZRTs
 Exercise Director.

LATERAL AND VERTICAL LIMITS		
SAINT FLOUR ZRT	UAV A ZRT	UAV B ZRT
<p>Lateral limits circle of 10.00 nm radius centered on 45°02'00.00"N, 002°57'00.00" E</p> <p>Vertical limits SFC / FL115</p>	<p>Lateral limits circle of 1.50 nm radius centered on 45°04'30.00"N, 002°59'33.00"E</p> <p>Vertical limits SFC / 5000' AMSL</p>	<p>Lateral limits circle of 1.50 nm radius centered on 45°07'30.00"N, 002°58'45.00"E</p> <p>Vertical limits SFC / 5000' AMSL</p>

ALLANCHES ZRT, UAV C ZRT



DATES AND TIMES OF ACTIVITY

ALLANCHES ZRT: a maximum of two 1h30 to 2h30 time slots can be activated every day

- Oct 5: 2000-2359
- Oct 6: 0000-0800, 0930-1230 and 2000-2359
- Oct 7: 0000-0800 and 2000-2359
- Oct 8: 0000-0800, 1030-1330 and 1530-2359

UAV C ZRT: a maximum of three 1h30 time slots can be activated every day

- Oct 5: 0000-0800, 0930-1230, 2000-2359
- Oct 6: 0000-0800, 2000-2359
- Oct 7: 0000-0800, 2000-2359
- Oct 8: 0000-0800, 1030-1330 and 1530-2359
- Oct 9: 0000-2359
- Oct 10: 0000-2359

USER INFORMATION

ALLANCHES ZRT, UAV C ZRT

Clermont INFO/APP: 122.225 MHz / 119.375 MHz
Rambert (Lyon Mont Verdun CDC): 143.550 MHz / 317.500 MHz

MANAGING AUTHORITY

ALLANCHES ZRT

Rambert (Lyon Mont Verdun CDC) or replacement CDC.

UAV C ZRT:

Exercise Director.

LATERAL AND VERTICAL LIMITS

ALLANCHES ZRT

Lateral limits

circle of 12.00 nm radius centered on 45°13'30.00" N, 002°55'00.00" E

Vertical limits

SFC / FL115

UAV C ZRT

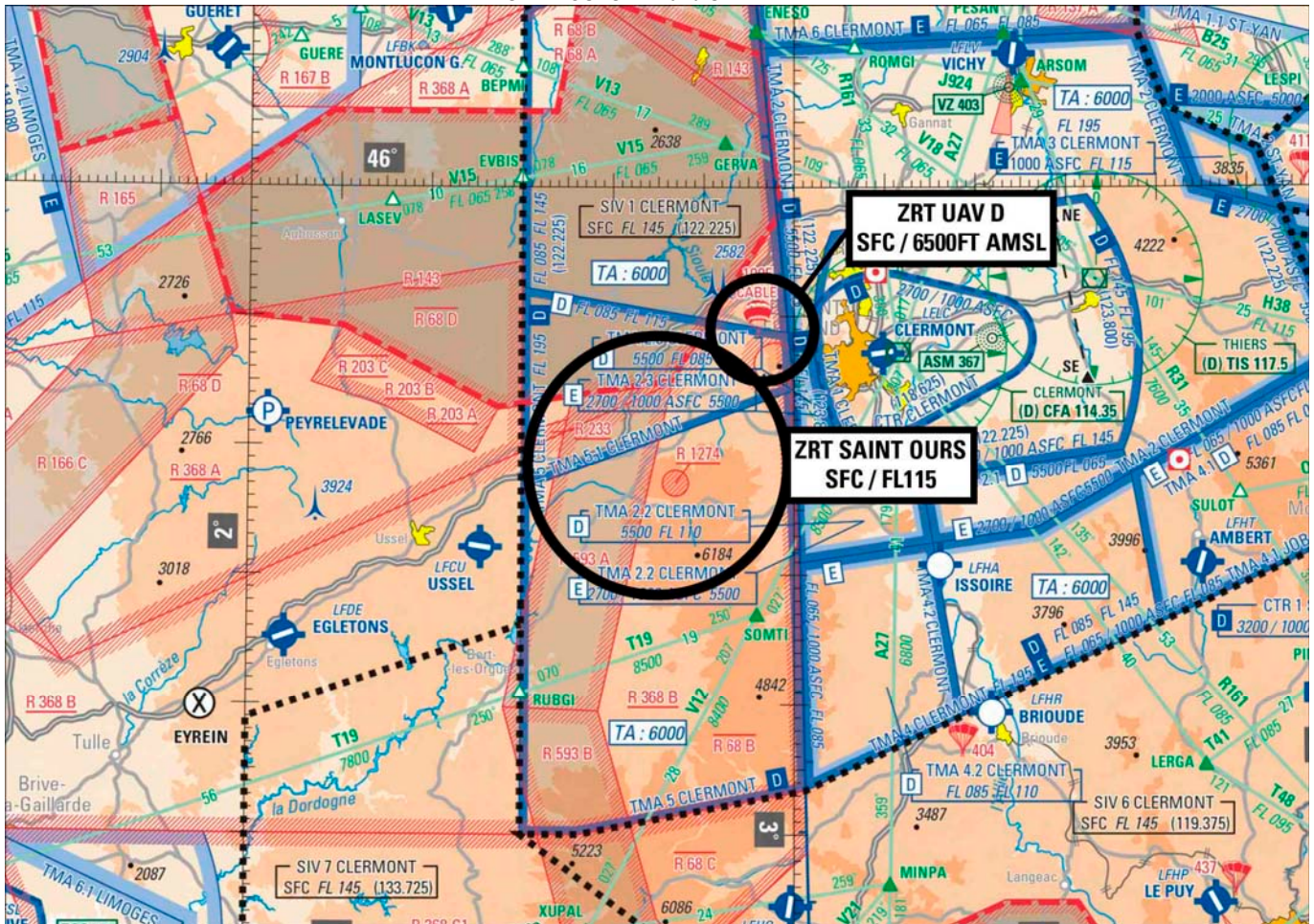
Lateral limits

circle of 1.50 nm radius centered on 45°13'30.00" N, 002°55'00.00" E

Vertical limits

SFC / 6500 FT AMSL

SAINT OURS ZRT and UAV D ZRT



DATES AND TIMES OF ACTIVITY

SAINT OURS ZRT: one 45-min time slot can be activated every day

- Oct 9: 0000-1000, 1600-2359
- Oct 10: 0000-1000, 1600-2359
- Oct 11: 0000-1000, 1600-2359

UAV D ZRT: a maximum of three 1h30 time slots can be activated every day

- Oct 9: 0000-0700, 1600-2359
- Oct 10: 0000-0700, 1600-2359
- Oct 11: 0000-1300, 1500-2359
- Oct 12: 0000-0800

USER INFORMATION

SAINT OURS ZRT:

Actual activity period available from:

- Clermont INFO/APP: 122.225 MHz / 119.375 MHz
- Rambert (Lyon Mont Verdun CDC): 143.550 MHz / 317.500 MHz

MANAGING AUTHORITY

SAINT OURS ZRT:

Rambert (Lyon Mont Verdun CDC) or replacement CDC.

UAV D ZRT:

Exercise Director.

LATERAL AND VERTICAL LIMITS

SAINT OURS ZRT

Lateral limits

circle of 10.00 nm radius centered on 45°38'30.00" N,002°45'00.00" E

Vertical limits

SFC / FL115

UAV D ZRT

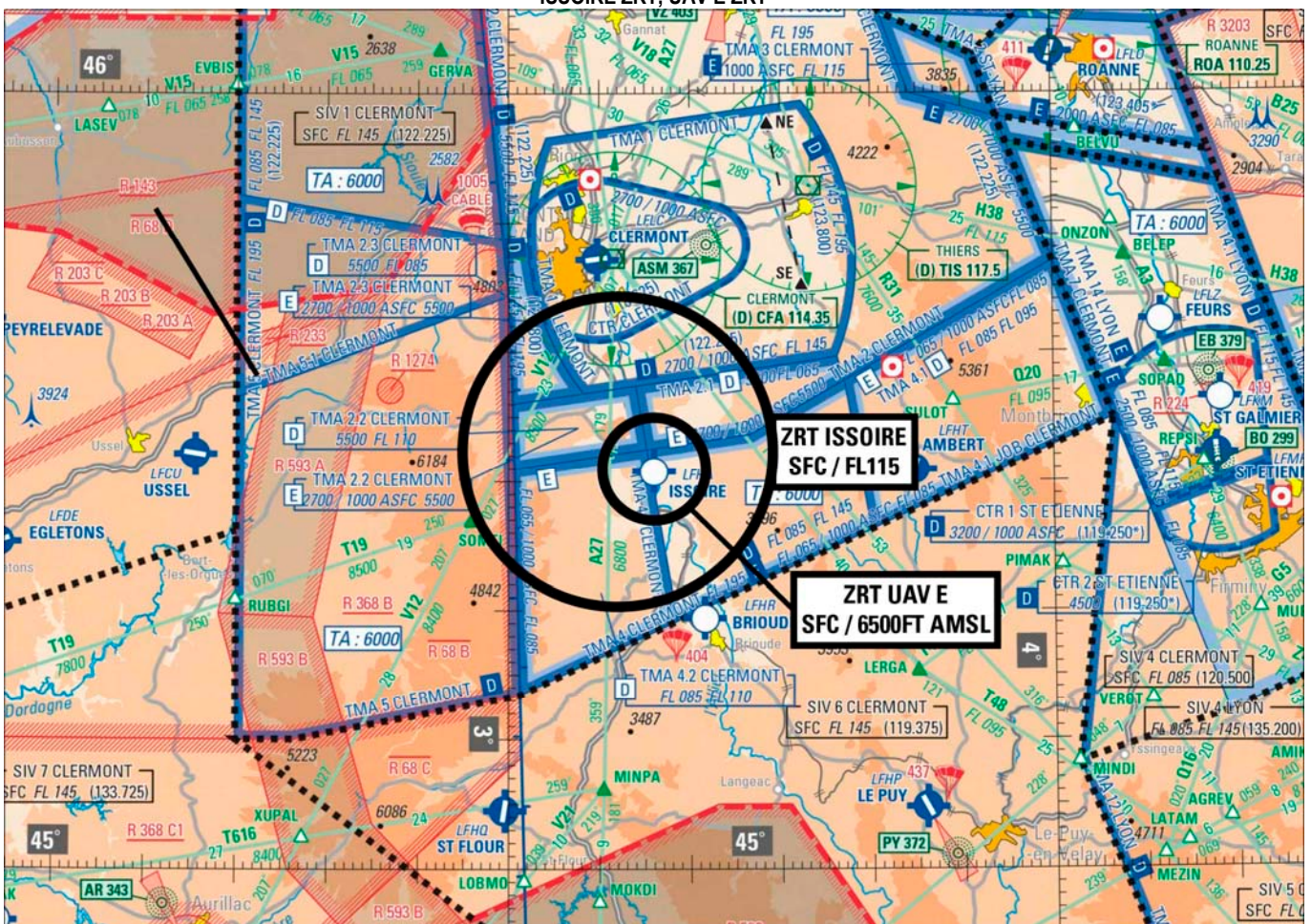
Lateral limits

circle of 4 nm radius centered on 45°49'00.00" N,002°56'30.00" E

Vertical limits

SFC / 6500'AMSL

ISSOIRE ZRT, UAV E ZRT



DATES AND TIMES OF ACTIVITY

ISSOIRE ZRT: one 45-min time slot can be activated every day

- Oct 13: 1600-2359
- Oct 14: 0000-0700 and 1600-2359
- Oct 15: 2000-2359

UAV E ZRT : a maximum of three 1h30 time slots can be activated every day

- Oct 13: 0000-0700, 1700-2359
- Oct 14: 0000-0700
- Oct 15: 0000-0700 and 2000-2359

USER INFORMATION

ISSOIRE ZRT, UAV E ZRT:

Clermont INFO/APP: 122.225 MHz

Rambert (Lyon Mont Verdun CDC): 143.550 MHz / 317.500 MHz

MANAGING AUTHORITY

ISSOIRE ZRT

Rambert (Lyon Mont Verdun CDC) or replacement CDC.

UAV E ZRT:

Exercise Director.

LATERAL AND VERTICAL LIMITS

ISSOIRE ZRT

Lateral limits

circle of 12.00 nm radius centered on
45°32'20.00" N, 003°12'00.00" E
excluding CLERMONT CTR

Vertical limits

SFC / FL115

UAV E ZRT

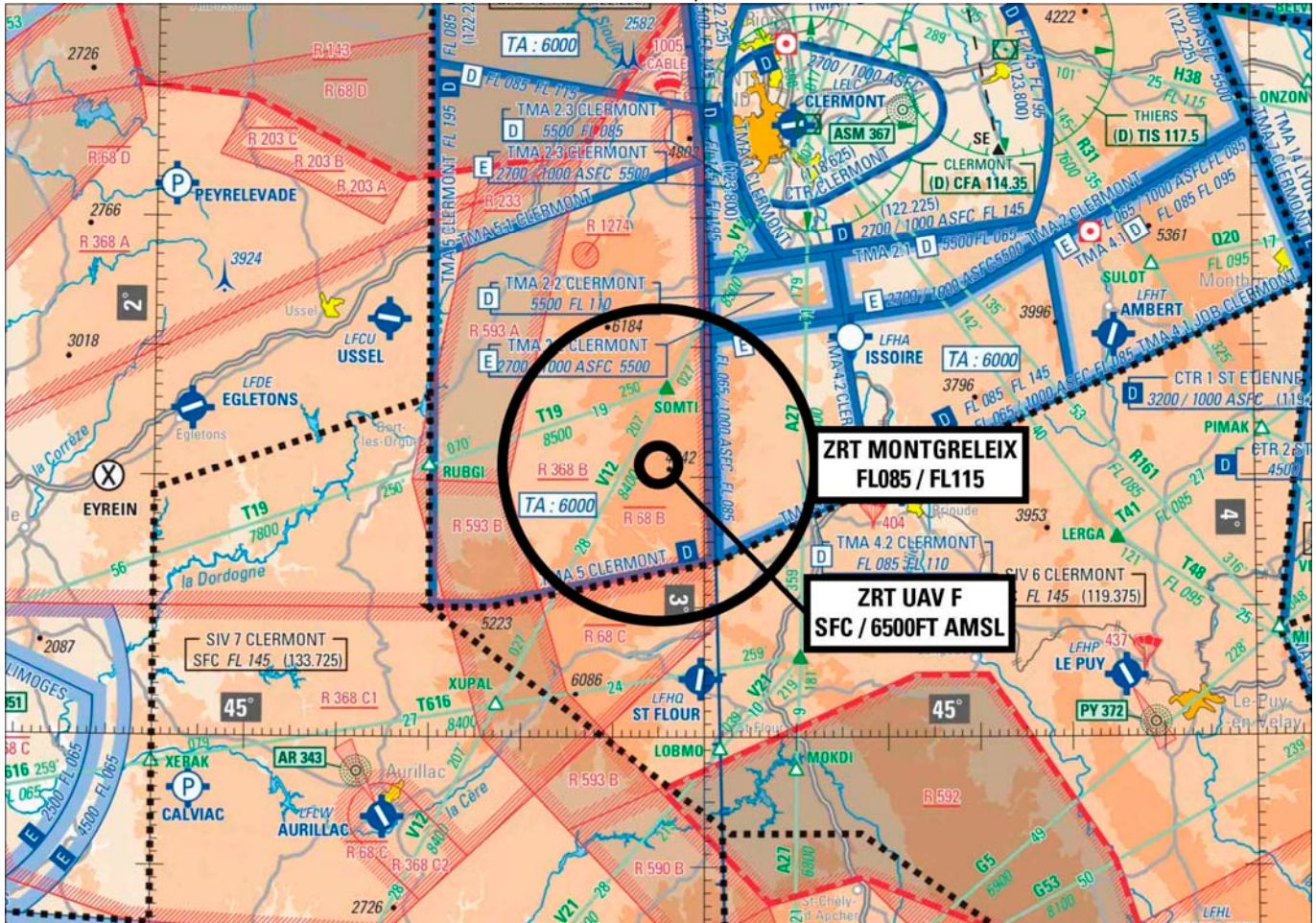
Lateral limits

circle of 4 nm radius centered on
45°31'00.00" N, 003°16'00.00" E

Vertical limits

SFC / 6500 FT AMSL

MONTGRELEIX ZRT, UAV F ZRT



DATES AND TIMES OF ACTIVITY

MONTGRELEIX ZRT: a maximum of two 1h30 to 2h30 time slots can be activated every day

Oct 13: 0000-0800, 0930-1230 and 1430-2359

Oct 14: 0000-0800, 0930-1300 and 2000-2359

UAV F ZRT: a maximum of three 1h30 time slots can be activated every day

Oct 13: 0000-0800, 0930-1230 and 1430-2359

Oct 14: 0000-0800 / 0930-1300 and 2000-2359

Oct 16: 2000-2359

Oct 17: 0000-0500

USER INFORMATION

MONTGRELEIX ZRT, UAV F ZRT:

Actual activity period available from:

Clermont INFO/APP: 122.225 MHz / 119.375 MHz

Rambert (Lyon Mont Verdun CDC): 143.550 MHz / 317.500 MHz

MANAGING AUTHORITY

MONTGRELEIX ZRT

Rambert (Lyon Mont Verdun CDC) or replacement CDC.

UAV F ZRT:

Exercise Director.

LATERAL AND VERTICAL LIMITS

MONTGRELEIX ZRT

Lateral limits

circle of 12.00 nm radius centered on 45°21'00.00" N,002°55'00.00" E

Vertical limits

FL85 / FL115

UAV F ZRT

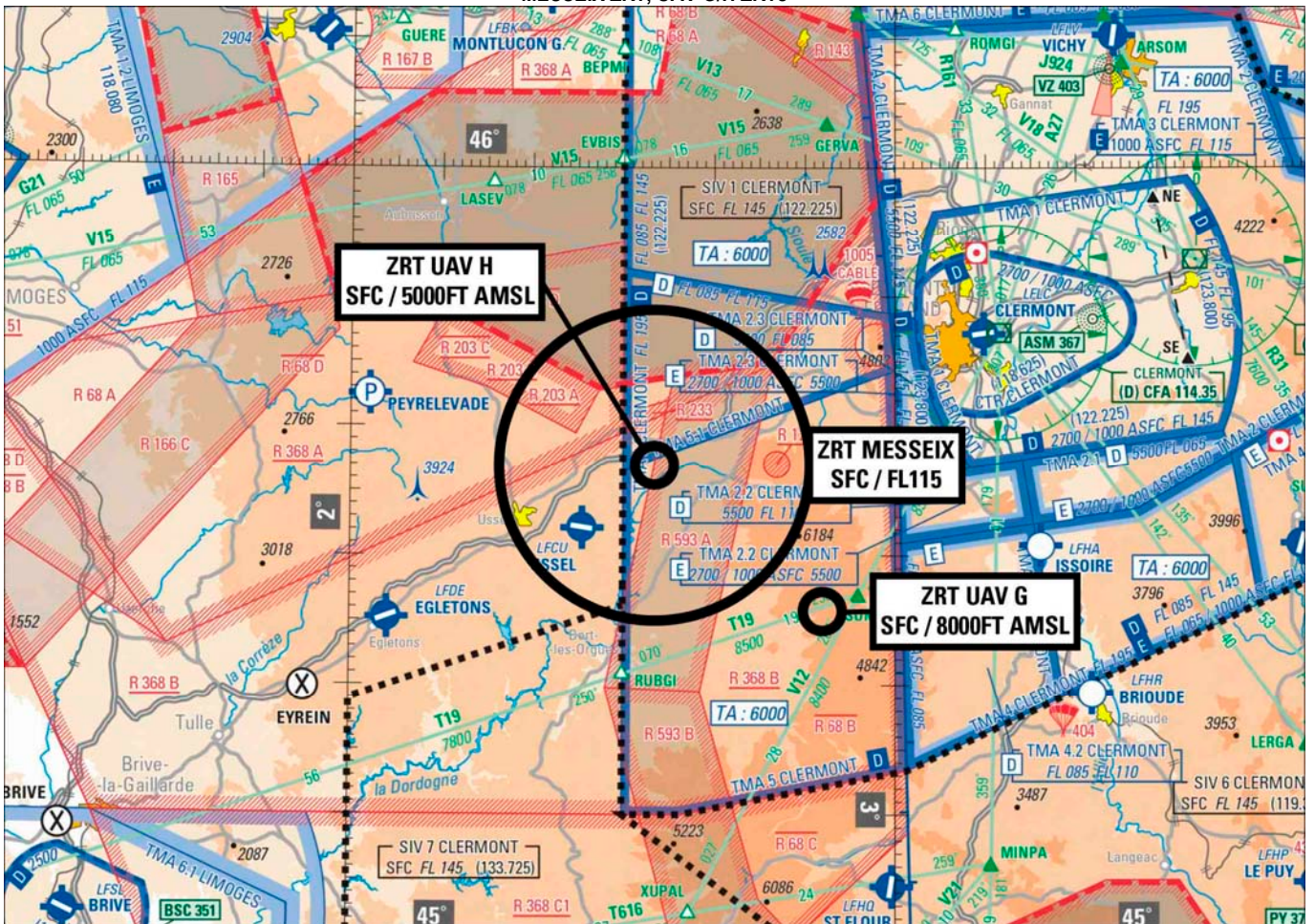
Lateral limits

circle of 1.50 nm radius centered on 45°21'00.00" N,002°55'00.00" E

Vertical limits

SFC / 6500 FT AMSL

MESSEIX ZRT, UAV G/H ZRTs



DATES AND TIMES OF ACTIVITY

MESSEIX ZRT: a maximum of two 1h30 to 2h30 time slots can be activated every day

Oct 13: 0000-0800,0930-1230 and 1430-2359

Oct 14: 0000-0800, 0930-1300 and 2000-2359

Oct 15: 0000-0800 and 0930-1300

Oct 18: 0000-0800, 0930-1300 and 2000-2359

UAV G ZRT: a maximum of three 1h30 to 2h30 time slots can be activated every day

Oct 13: 1430-2359

Oct 14: 0000-0800

Oct 15: 0000-0800, 1600-1800 and 2000-2359

Oct 16: 0000-0500, 1600-1800 and 2000-2359

Oct 17: 0000-0500

UAV H ZRT: a maximum of two 1h30 time slots can be activated every day

Oct 13: 0000-0800, 0930-1230 and 1430-2359

Oct 14: 0000-0800, 0930-1300 and 2000-2359

Oct 15: 0000-0800, 0930-1300 and 2000-2359

Oct 16: 0000-0800, 0930-1300 and 2000-2359

Oct 17: 0000-0800, 0930-1300 and 2000-2359

Oct 18: 0000-0800, 0930-1300 and 2000-2359

USER INFORMATION

MESSEIX ZRT, UAV G/H ZRTs:

Actual activity period available from:

Clermont INFO/APP: 122.225 MHz

Rambert (Lyon Mont Verdun CDC): 143.550 MHz / 317.500 MHz

MANAGING AUTHORITY

MESSEIX ZRT:

Rambert (Lyon Mont Verdun CDC) or replacement CDC.

UAV G/H ZRTs:

Exercise Director.

LATERAL AND VERTICAL LIMITS

<u>MESSEIX ZRT</u>	<u>UAV G ZRT</u>	<u>UAV H ZRT</u>
<p>Lateral limits circle of 12.00 nm radius centered on 45°37'00.00" N,002°33'30.00" E</p>	<p>Lateral limits circle of 1.50 nm radius centered on 45°25'45.00" N,002°52'00.00" E</p>	<p>Lateral limits circle of 1.50 nm radius centered on 45°37'00.00" N,002°33'30.00" E</p>
<p>Vertical limits SFC / FL115</p>	<p>Vertical limits SFC / 8000 FT AMSL</p>	<p>Vertical limits SFC / 5000 FT AMSL</p>

ADDITIONAL PROVISIONS

- **The floor of the following ATS routes will be raised to FL115 when the ZRT is activated:**

- MONTGRELEIX ZRT:
 - A27 between CLERMONT and MINPA
 - T19 between CLERMONT and RUBGI
 - V12 between CLERMONT and ZUPAL
- SAINT FLOUR ZRT:
 - V21 between MINPA and TAKAT
 - T616 between MINPA and XUPAL
 - A27 between MINPA and MOKDI
- ALLANCHES ZRT:
 - A27 between CLERMONT and MINPA
 - V12 between XUPAL and SOMTI
- ISSOIRE ZRT:
 - V12 between CLERMONT and SOMTI
 - A27 between CLERMONT and MINPA
 - T48 between CLERMONT and LERGA
 - R161 between CLERMONT and MINDI

- **All light sport and recreational air activities located within the ZRT are suspended during the activation time slots.**

- **Special provisions for emergency missions:**

- For aircraft involved in emergency missions in the ZRTs (EMS (SAMU), civil security, gendarmerie, police, etc.), initiation of the mission must be coordinated by the Exercise Management Unit (see organization to be contacted during the exercise).
- Provide the following information:
 - number and type of aircraft,
 - call sign,
 - estimated take-off time and duration of the mission,
 - estimated ZRT entry/exit times,
 - expected path and flight altitude,
 - possibly, mode 3/A transponder,
- End the mission by contacting the Exercise Management Unit.

- **Additional activities are scheduled in the following airspaces (REAPER DRONE)**

- LF-R 49 COGNAC A2/E1/E2/H2/H3
- LF-R 203 A/B/C LA COURTINE
- LF-R 261 LIMOGES
- LF-R 68 A/B/C/D

The activation time slots of the "manageable" areas are notified at D-1 before 1200 by the CDPGE (French National Airspace Management Unit).

- **Occasional parachuting activities relating to the exercise will be published via NOTAM.**

- **The following areas will not be activated during the ZRT activation times affecting them:**

- LF-R 368 A/B/C1,
- LF-R 68 A/B/C/D,
- LF-R 143 AUVERGNE,
- LF R 203 A/B/C LA COURTINE,
- LF-R 233 BOURG LASTIC,
- LF-R 590 B MENDE NORD,
- LF-R 592 CANTAL,
- LF-R 593 A/B LES PUYs,
- LF-R 1274 BANNE D'ORDANCHE.

Nevertheless, throughout the duration of the VOLFA 2021 exercise (AIP SUP 218/21), the GORGONES EXERCISE ZRTs affected will not be activated.

- **The Issoire and Montgreleix ZRTs will not be activated simultaneously.**

- **Possible restrictions on the Ussel LFCU, Saint Flour LFHQ and Issoire LFHA aerodromes will be published via NOTAM.**

AUTHORITIES TO BE CONTACTED

Before the exercise:

- COMALAT / Airspace section:
Phone : +33(0)1 73 95 22 83 / 01 73 95 22 84

- Com FST:
Phone : +33(0)5 40 03 71 34 / 05 40 03 71 24

- 4^{ème} Régiment d'Hélicoptères des Forces Spéciales (4th Special Forces Helicopter Regiment)
Phone : +33(0)5 40 03 73 51 / 50

During the exercise:

CELLULE CONDUITE EXERCICE (Exercise Management Unit)
3D Coordinator- Exercise Director (DIREX)
Phone : +33(0)6 75 33 48 71

Lyon-Mont-Verdun Military Control and Detection Center (CDC)
Phone : +33(0)4 26 72 83 99

Mont-de-Marsan Military Control and Detection Center (CDC)
Phone : +33(0)5 58 05 49 03

Cinq-Mars-La-Pile Military Control and Detection Center (CDC)
Phone : +33(0)2 47 96 28 63 or 30 00