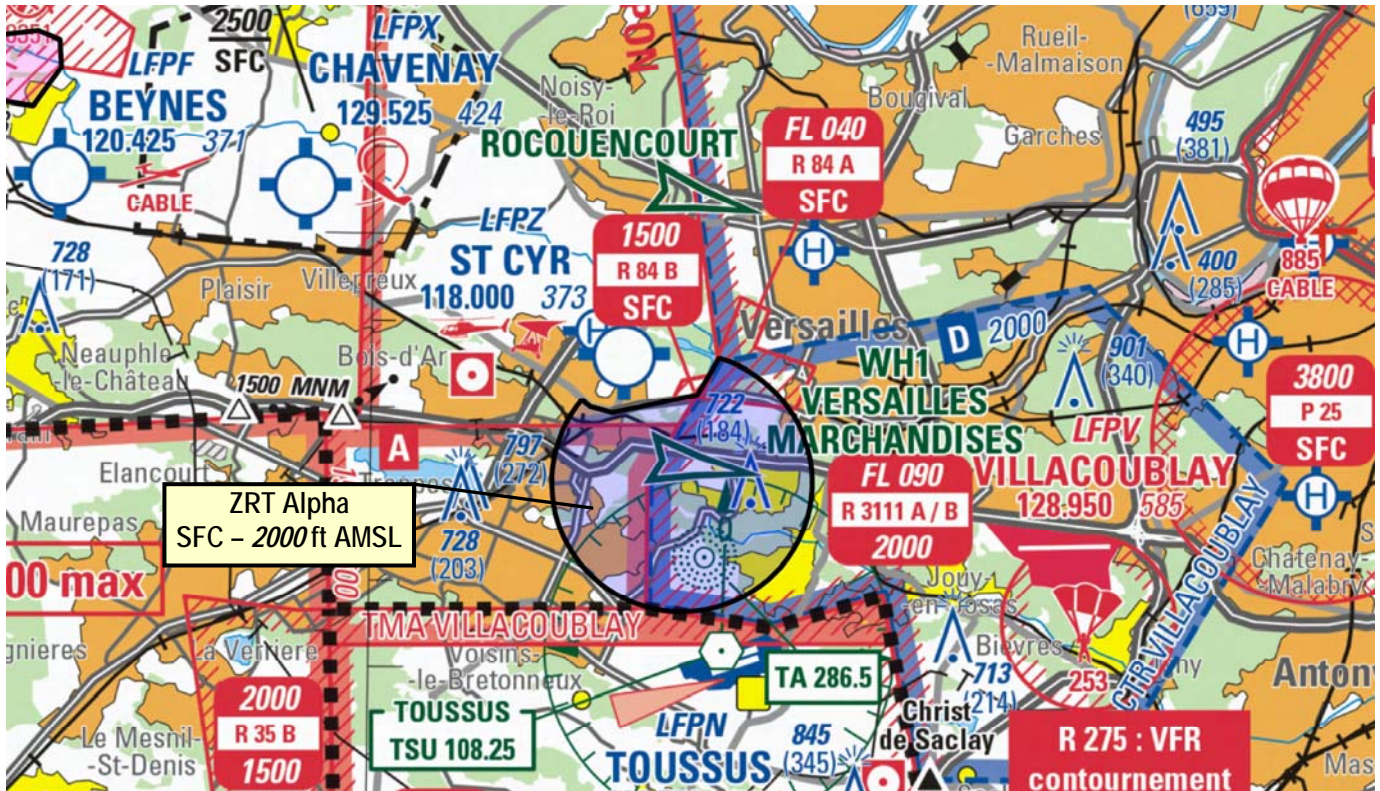


Subject : Creation of a Temporary Restricted Area (ZRT) over Versailles for demonstration flights

With effect : From 27 September to 07 October 2021

Location: FIR : Paris LFFF - AD : Villacoublay LFPV - Heliport : Paris Issy-les-Moulineaux LFPJ



from 1 : 250 000 « Région Parisienne » SIA map 2021 edition

ACTIVITY

Helicopter and unmanned ACFT demonstration flights.

DATES AND TIMES OF ACTIVITY

ZRT Alpha activation is possible :
From 27 September to 07 October : 0600-1000, 1100-1600.

USERS INFORMATION

Villacoublay TWR : 128.950 MHz
Villacoublay APP : 119.425 MHz
Toussus TWR : 120.750 MHz
Moulineaux TWR : 118.500 MHz
Saint-Cyr TWR : 118.000 MHz
Chevreuse INFO : 119.300 MHz
« Directeur des vols » (Flight Manager) : +33(0)6 17 90 72 84

MANAGING AUTHORITY

Villacoublay APP

STATUS

Tempo Restricted Area replacing the portions of airspace with which it overlaps.

ENTRY CONDITIONS

GAT / OAT : compulsory avoidance except for :
- aircraft involved in the demonstration.
- aircraft to and / or from Villacoublay AD.
- French aircraft conducting assistance, rescue or public safety missions, when the ZRT avoidance is not compatible with these missions; entry is possible after contact with « Directeur des vols »

SERVICES PROVIDED

Flight information and alert provided by Villacoublay APP

LATERAL AND VERTICAL LIMITS

ZRT Alpha :

Lateral limits :

48°48'06.70" N - 002°03'40.40" E

48°48'02.00" N - 002°03'49.00" E

48°47'58.00" N - 002°04'12.00" E

48°48'11.00" N - 002°05'41.00" E

48°48'36.49" N - 002°06'03.30" E

Thence clockwise by the arc of a circle radius 1.5 NM centred at 48°47'10" N - 002°05'26" E

48°48'06.70" N - 002°03'40.40" E

Excluding the portions overlapping with Areas LF-R 84 A and B

Vertical limits :

SFC / 2000 ft AMSL

SPECIAL PROVISIONS

When ZRT Alpha is active :

- ◆ The Helicopter route in Villacoublay CTR is closed on segment WH1-WH3.
- ◆ Access to Satory helistation is available subject to PPR from "Directeur des vols".

RELEVANT AUTHORITIES CONTACT DETAILS

Prior to demonstration :

« COMALAT Section Espace » :

e-mail : : comalat.section-espace.lst@intradef.gouv.fr

Phone : +33(0)1 73 95 22 84 or +33(0)1 73 95 22 83

During demonstration :

DIREX : phone : +33(0)6 17 90 72 84

« Officier Sécurité des vols », phone : +33(0)6 85 34 26 50