



Service
de l'Information
Aéronautique

DSNA



Liberté • Égalité • Fraternité
RÉPUBLIQUE FRANÇAISE

E-mail : sia.qualite@aviation-civile.gouv.fr
Internet : www.sia.aviation-civile.gouv.fr

AIP SUP 208/21
Publication date : 26 AUG

Subject : Creation of a RNP approach procedure for RWY 30 at Beauvais Tillé AD LFOB

With effect : From 09 September 2021 to 29 December 2021

This AIP SUP supersedes AIRAC AIP SUP 027/21
(CHG : Magnetic variation, new VOR/DME BOV, THR 30 coordinates, SBAS FAS DATA BLOCK)

DESCRIPTION

From 16 July 2020, a new RNP procedure for runway 30 will be available at Beauvais Tillé aerodrome.
This new approach procedure has LPV, LNAV / VNAV and LNAV operational minima.

This procedure will be included into the FRANCE AIP.

CONDITION OF USE

The new approach procedure can be flown by aircraft equipped with an RNP APCH approved navigation system.

IAC CHARTS, DATA AND CODING PROPOSAL

See APPENDIXES 1 to 5.

INTENTIONALLY BLANK

ANNEXE 1 / APPENDIX 1**POINTS / REPERES ESSENTIELS DES PROCEDURES
WAYPOINTS / PROCEDURES MAIN FIXES**

Identification	Coordonnées <i>Coordinates</i>	RNAV	CONV	SID STAR	IAC
MATID	REF ENR 4.4	X	X	X	X
OBOBI	REF ENR 4.4	X		X	X
MTD	REF ENR 4.1	X	X	X	X
OB504	49°23'31.1" N 002°29'07.1" E	X			X
OB510	49°28'26.0" N 002°04'04.6" E	X			X
INMOC	49°19'22.4" N 002°24'51.1" E	X			X
FOB30	49°22'09.3" N 002°18'30.1" E	X			X
RW30	49°26'46.34" N 002°07'54.24" E	X			X

(INMOC sera publié dans / will be published in FRANCE AIP ENR 4.4)

ANNEXE 2 / APPENDIX 2

PRECODING RNP RWY 30

RNP RWY30												
RMK	MAG VAR 2020 0.9°E							REF NAVAID :-				
Leg sequence	Path Terminator	Waypoint Identification	Fly Over	Direction MAG (°)	Direction True (°)	Distance (NM)	Turn direction	MNM Altitude (FL or AMSL ft)	MAX Altitude (FL or AMSL ft)	MAX IAS (kt)	Vertical angle (°) / TCH (m)	NAV Spec
HLDG	-	MATID	-	-	-	-	-	-	-	-	-	-
HLDG	-	MTD	-	-	-	-	-	-	-	-	-	-
INA MATID	IF	MATID	-	-	-	-	-	-	-	-	-	RNP APCH
	TF	MTD	-	095	096.1	28.4	-	-	-	-	-	RNP APCH
	TF	OB504	-	180	181.0	9.6	-	-	-	-	-	RNP APCH
INA MTD	TF	INMOC	-	213	213.9	5.0	-	-	-	-	-	RNP APCH
	IF	MTD	-	-	-	-	-	-	-	-	-	RNP APCH
	TF	OB504	-	180	181.0	9.6	-	-	-	-	-	RNP APCH
INA OBOBI	TF	INMOC	-	213	213.9	5.0	-	-	-	-	-	RNP APCH
	IF	OBOBI	-	-	-	-	-	-	-	-	-	RNP APCH
	TF	INMOC	-	265	265.9	26.2	-	-	-	-	-	RNP APCH
APCH	IF	INMOC	-	-	-	-	-	-	-	-	-	RNP APCH
	TF	FOB30	-	303	303.9	5.0	-	3000	3000	-	-	RNP APCH
	TF	RW30	Yes	303	303.8	8.3	-	-	-	-	-3.0° / 16.2	RNP APCH
	TF	OB510	Yes	303	303.7	3.0	-	-	-	-	-	RNP APCH
	DF	MTD	-	-	-	-	R	3000	-	-	-	RNP APCH

ANNEXE 3 / APPENDIX 3

SBAS FAS DATA BLOCK RNP RWY 30

Input data

Operation Type	0
SBAS Provider	1 (EGNOS)
Airport Identifier	LFOB
Runway	30
Runway Letter	0 (None)
Approach Performance Designator	0
Route Indicator	
Reference Path Data Selector	0
Reference Path Identifier	E30A
LTP/FTP Latitude	492646.3430N
LTP/FTP Longitude	0020754.2370E
LTP/FTP Ellipsoidal Height (metres)	134.5
FPAP Latitude	492729.9250N
Delta FPAP Latitude (seconds)	43.5820
FPAP Longitude	0020613.8690E
Delta FPAP Longitude (seconds)	-100.3680
Threshold Crossing Height	16.15
TCH Units Selector	1 (meters)
Glidepath Angle (degrees)	3.00
Course Width (metres)	105.00
Length Offset (metres)	0
HAL (metres)	40.0
VAL (metres)	35.0

Output data

Data Block	10 02 0F 06 0C 1E 00 00 01 30 33 05 8E 52 38 15 FA 32 EA 00 41 19 7C 54 01 E0 EF FC 43 81 2C 01 64 00 C8 AF 27 49 D9 9B
Calculated CRC Value	2749D99B

Required Additional Data

ICAO Code	LF
LTP/FTP Orthometric Height (metres)	90.6

ANNEXE 4 / APPENDIX 4

AIP SUP
FRANCE

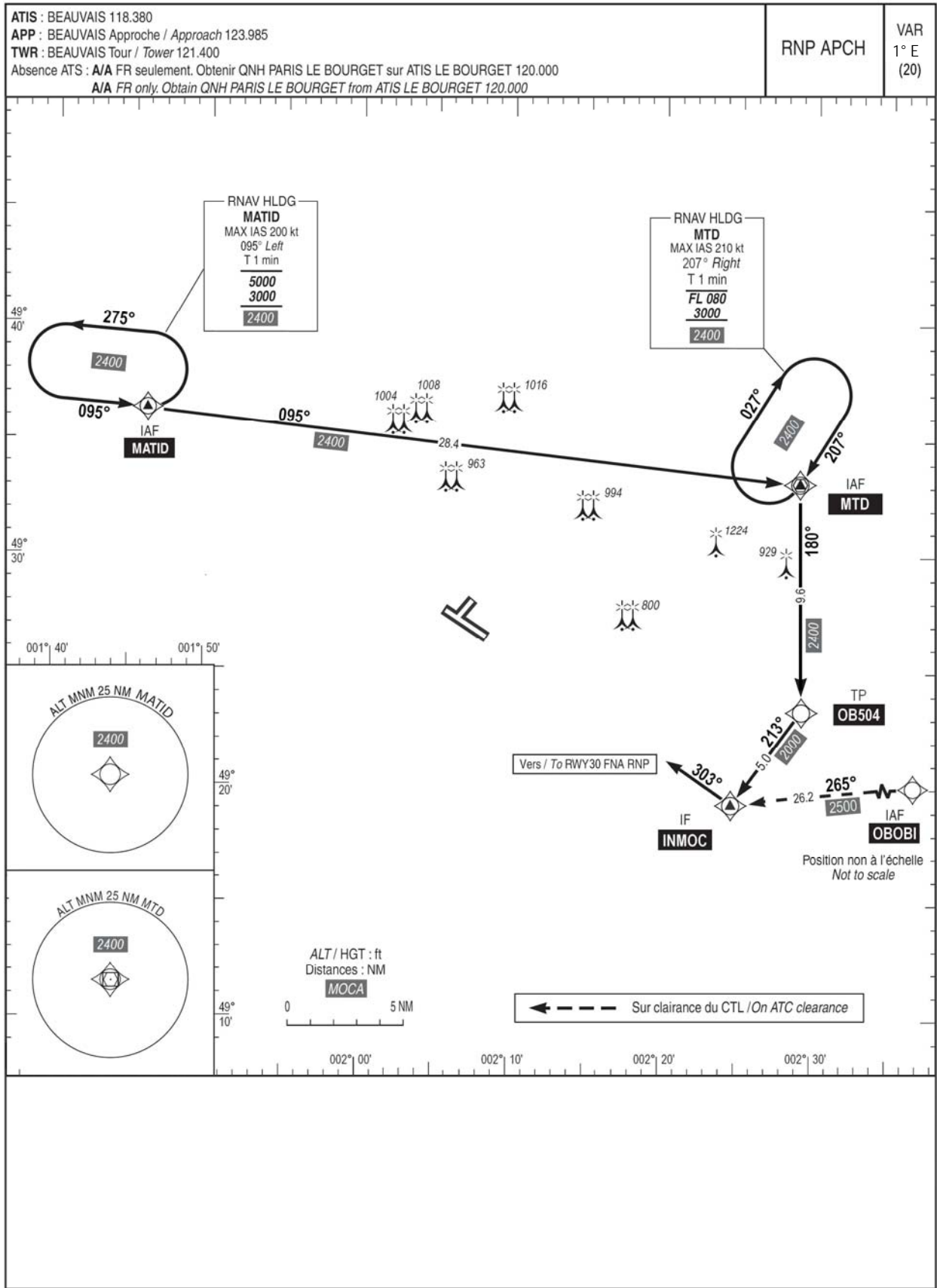
AD 2 LFOB IAC RWY30 INA RNP

APPROCHE AUX INSTRUMENTS

Instrument approach
CAT A B C D

BEAUVAIS TILLE

INA RNP RWY 30



ANNEXE 5 / APPENDIX 5

AIP SUP
FRANCE

AD 2 LFOB IAC RWY30 FNA RNP

APPROCHE AUX INSTRUMENTS

BEAUVAIS TILLE

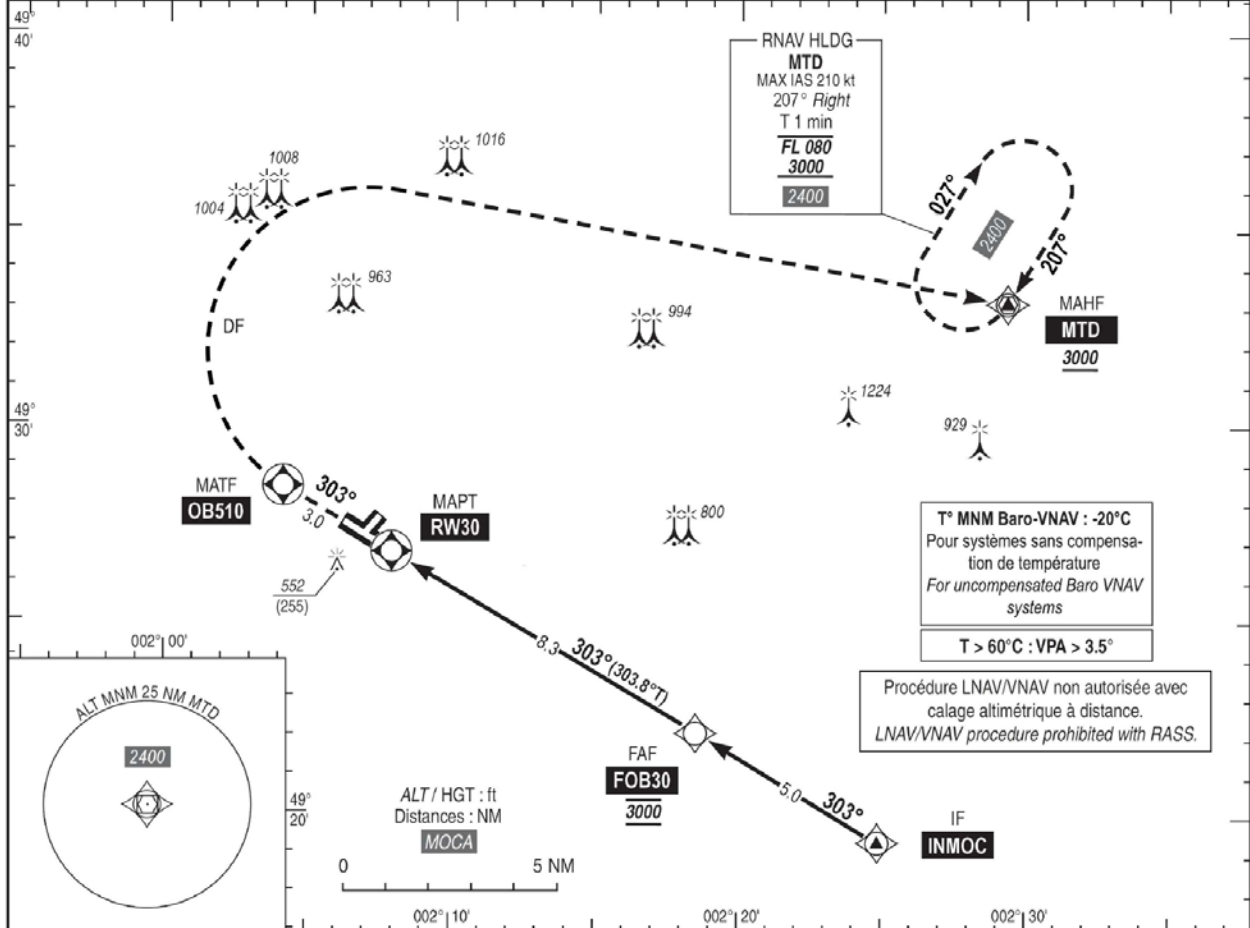
Instrument approach

CAT A B C D

ALT AD : 359, THR : 297 (11 hPa)

FNA RNP RWY 30

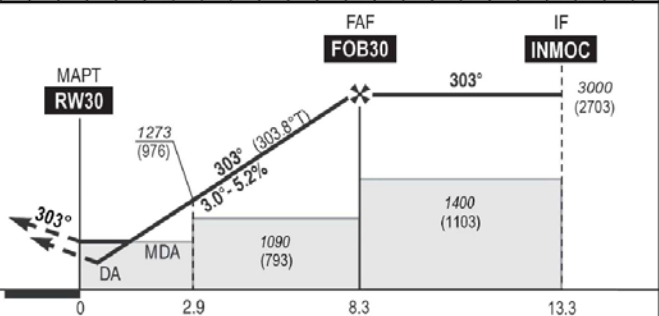
ATIS : BEAUVAIS 118.380 APP : BEAUVAIS Approche / Approach 123.985 TWR : BEAUVAIS Tour / Tower 121.400 Absence ATS : A/A FR seulement. Obtenir QNH PARIS LE BOURGET sur ATIS LE BOURGET 120.000 A/A FR only. Obtain QNH PARIS LE BOURGET from ATIS LE BOURGET 120.000	RNP APCH	EGNOS Ch 70898 E30A RDH : 53	VAR 1° E (20)
---	----------	---------------------------------------	---------------------



TA : 5000

API : Monter vers **OB510**, puis tourner à droite direct vers **MTD** pour intégrer l'attente en montée vers **3000** (2703) ou suivre les instructions du contrôle.
 Monter à **1600** (1303) avant d'accélérer en palier.

Missed APCH : Climb to **OB510**, then turn right direct to **MTD** to enter holding climbing up to **3000** (2703) or proceed according to ATC instructions.
 Climb up to **1600** (1303) prior to level acceleration.



MNM AD : distances verticales en pieds, RVR et VIS en mètres / vertical distances in feet, RVR and VIS in metres. REF HGT : ALT THR

CAT	LPV (2)			LNAV/VNAV (2)			LNAV			MVL / Circling (1)		MVL / Circling Absence ATS HJ seulement/only (1)		DIST RW30				
	DA (H)	RVR	OCH	DA (H)	RVR	OCH	MDA (H)	RVR	OCH	MDA (H)	VIS	MDA (H)	VIS	NM	8	7	6	5
A			157			227				860 (560)	1500	1000 (700)	1500		2900	2580	2260	1940
B			166			239				900 (600)	1600	1040 (860)	1600		(2603)	(2283)	(1963)	(1643)
C	550 (250)	550	180	600(300)	750	248	640(350)	1500	343	-	-	-	-	4	3	2	1	
D			190			275								(1323)	(1013)	(693)	(373)	

Observations / Remarks : (1) MVL CAT C et D interdites / Circling CAT C and D prohibited. (2) Minimums majorés. / Increased minimums.
 Panne de guidage GNSS lors de l'approche / Loss of GNSS guidance during approach : voir / see AIP ENR 1.5

FAF - MAPT	8.3 NM	70 kt 7 min 08	85 kt 5 min 52	100 kt 5 min 00	115 kt 4 min 21	130 kt 3 min 50	160 kt 3 min 07	185 kt 2 min 42
VSP (ft/min)		370	450	530	610	690	850	980