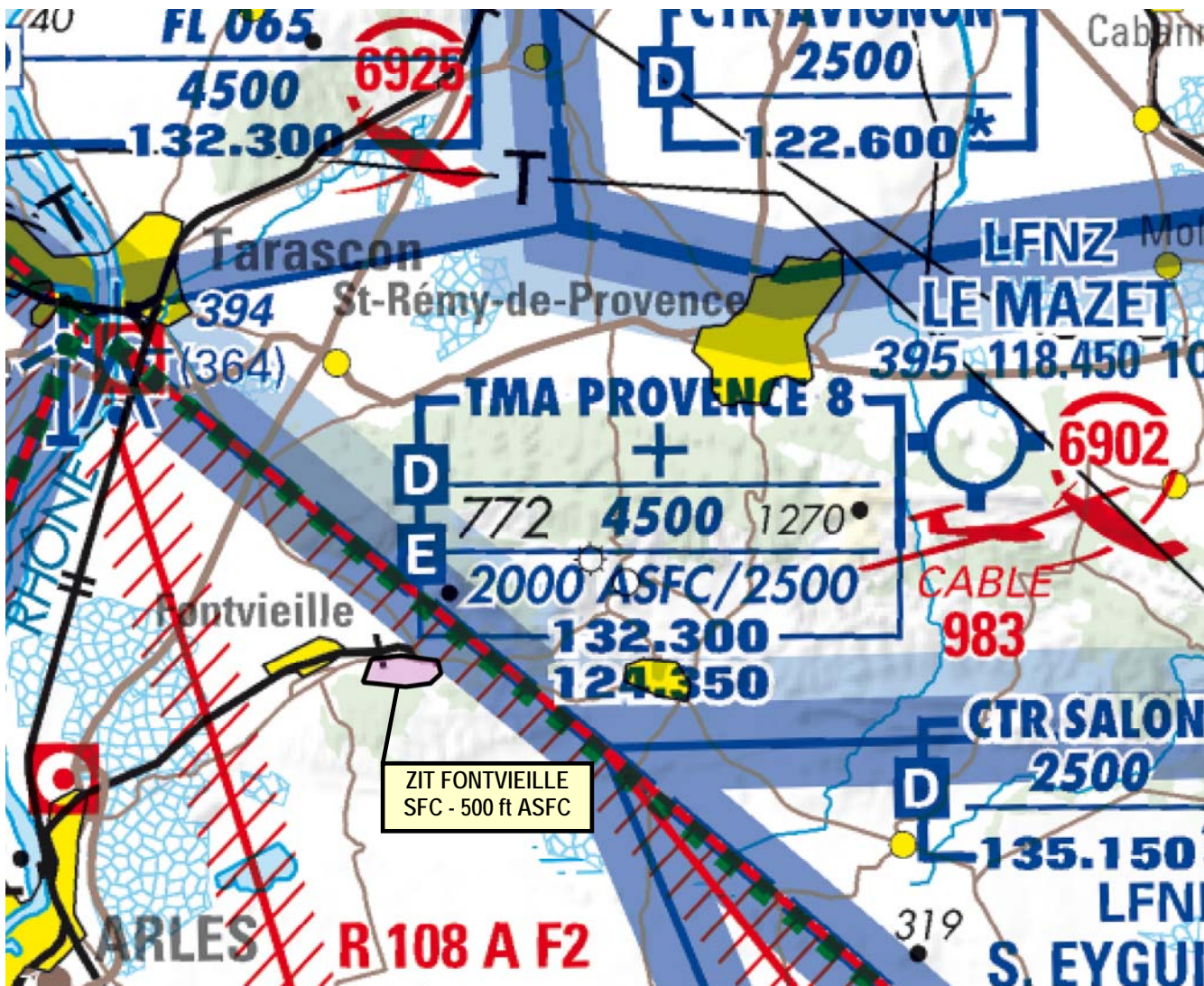


**Subject** : Creation of a Tempo Prohibited Area (ZIT) FONTVIEILLE (13)

**With effect** : From 12 August 2021 to 20 April 2022

**Location** : FIR : Marseille LFMM - AD : Istres le Tube LFMI



#### ACTIVITY

Overflight of specific defense installations prohibited.

#### DATES AND TIMES ACTIVITY

H24

#### MANAGING AUTHORITY

ISTRES TWR / « Service interarmées des munitions »

#### ENTRY PENETRATION

Entry prohibited for any unmanned ACFT, except unmanned ACFT conducting a mission for State services (defense, gendarmerie, police, customs, public safety and rescue).

Derogation subject to the agreement of the managing authority with minimum PPR PN 5 working days.

Contact : [simu-versailles.sec-secu-defense.fct@intra.def.gouv.fr](mailto:simu-versailles.sec-secu-defense.fct@intra.def.gouv.fr)

**AIP SUP N° 190/21**

**STATUS**

Temporary Prohibited Area (ZIT) coexisting with the portions of airspaces with which it overlaps.

**SERVICES PROVIDED**

The services provided are in accordance with the classes of parts of airspace with which the ZIT coexists.

**LATERAL AND VERTICAL LIMITS**

Lateral limits :

43°43'46"N - 004°43'24"E  
43°43'29"N - 004°43'15"E  
43°43'25"N - 004°43'58"E  
43°43'27"N - 004°44'23"E  
43°43'34"N - 004°44'34"E  
43°43'44"N - 004°44'31"E  
43°43'48"N - 004°43'54"E  
43°43'46"N - 004°43'24"E

Vertical limits :

SFC / 500 ft ASFC