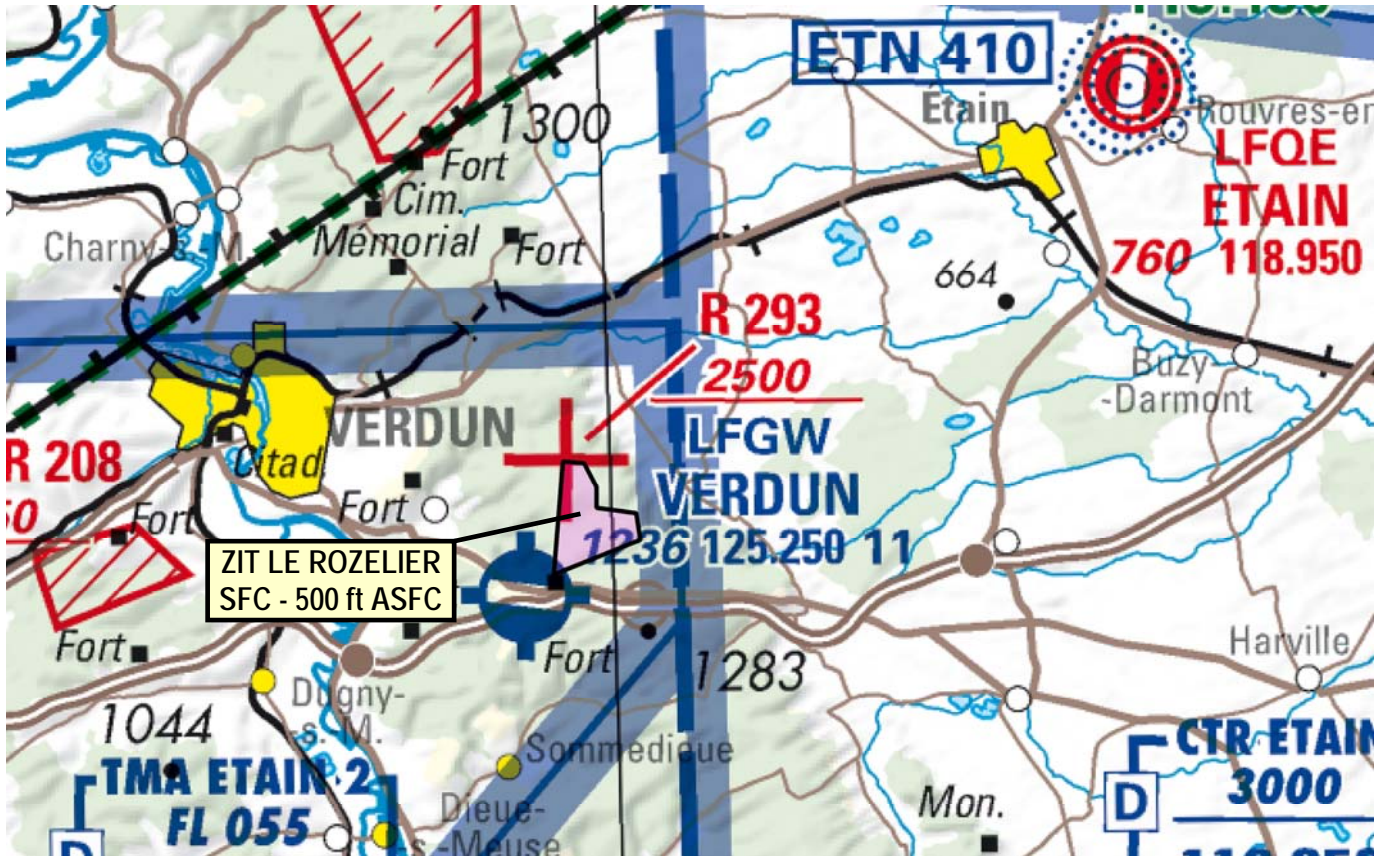


Subject : Creation of a Tempo Prohibited Area (ZIT) LE ROZELIER (55)

With effect : From 12 August 2021 to 20 April 2022

Location : FIR : Reims LFEE - AD : Verdun LFGW



Excerpt from 1 / 500 000 OACI VFR IGN map 2021 edition

ACTIVITY

Overflight of specific defense installations prohibited.

DATES AND TIMES ACTIVITY

H24

MANAGING AUTHORITY

Ammunitions department (Service interarmées des munitions).

ENTRY CONDITIONS

Entry prohibited for any unmaned ACFT, except unmaned ACFT conducting a mission for State services (defense, gendarmerie, police, customs, public safety and rescue).

Derogation subject to the agreement of the managing authority with PPR PN 5 worked days.

Contact : simu-versailles.sec-secu-defense.fct@intradef.gouv.fr

STATUS

Temporary Prohibited Area (ZIT) replacing the portions of airspace with wich it overlaps.

SERVICES PROVIDED

Flight information and alert.

LATERAL AND VERTICAL LIMITS

Lateral Limits :

49°09'04"N - 005°29'05"E
49°09'02"N - 005°29'30"E
49°08'43"N - 005°29'44"E
49°08'27"N - 005°29'43"E
49°08'22"N - 005°30'30"E
49°08'01"N - 005°30'34"E
49°07'36"N - 005°28'50"E
49°09'04"N - 005°29'05"E

Vertical Limits :

SFC / 500 ft ASFC