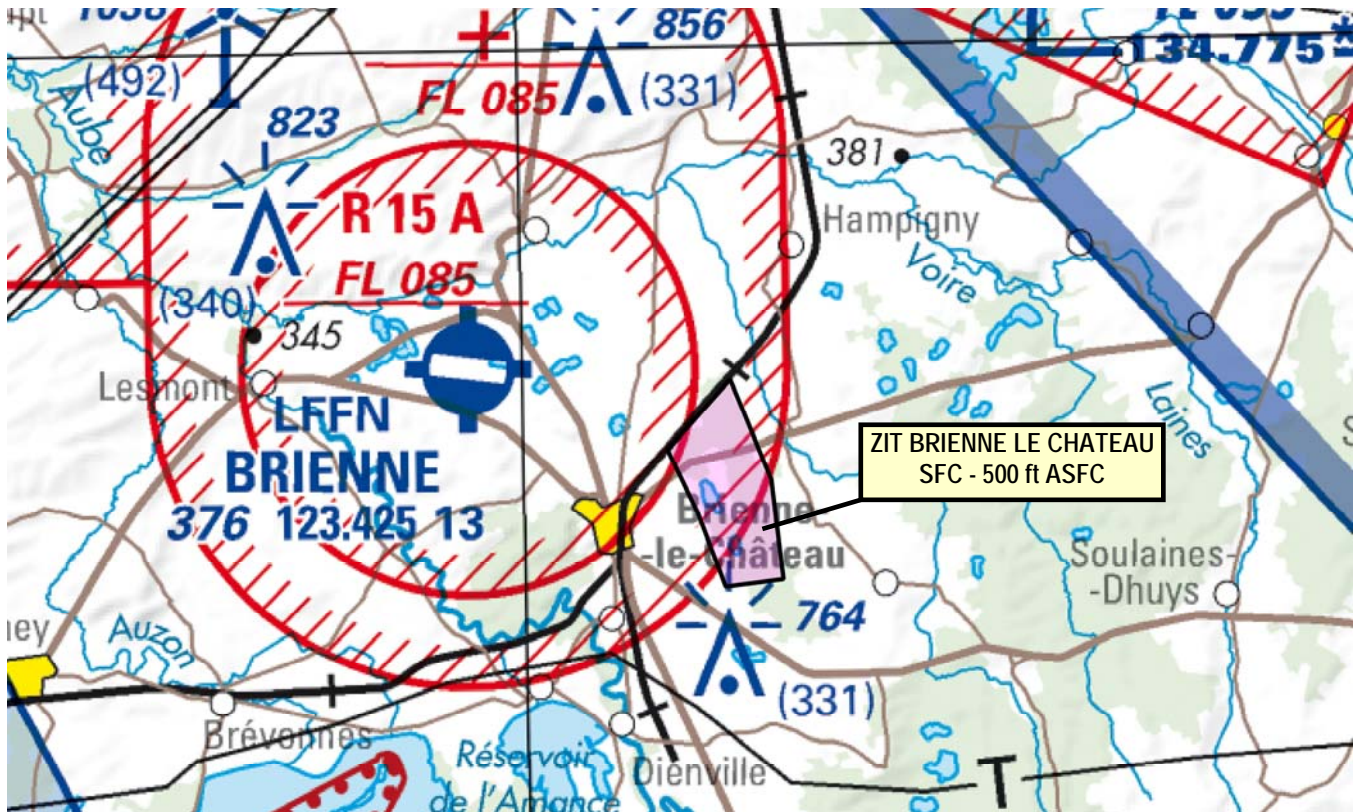


Subject : Creation of a Tempo Prohibited Area (ZIT) BRIENNE-LE-CHATEAU (10)
With effect : From 12 August 2021 to 20 April 2022

Location : FIR : Paris LFFF - AD : Brienne LFFN



Excerpt from 1 / 500 000 OACI IGN map 2021 edition

ACTIVITY

Overflight of specific defense installations prohibited.

DATES AND TIMES ACTIVITY

H24

MANAGING AUTHORITY

Ammunitions department (Service interarmées des munitions).

ENTRY PENETRATION

Entry prohibited for any unmanned ACFT, except unmanned ACFT conducting a mission for State services (defense, gendarmerie, police, customs, public safety and rescue).

Derogation subject to the agreement of the managing authority with minimum PPR PN 5 working days.
Contact : simu-versailles.sec-secu-defense.fct@intradef.gouv.fr

STATUS

Temporary Prohibited Area (ZIT) replacing the portions of airspaces with which it overlaps.

SERVICES PROVIDED

Flight information and alert.

LATERAL AND VERTICAL LIMITS

Lateral limits :

48°25'35"N - 004°34'09"E

48°24'15"N - 004°34'56"E

48°22'55"N - 004°35'08"E

48°22'50"N - 004°33'59"E

48°23'50"N - 004°33'27"E

48°24'40"N - 004°32'53"E

48°25'35"N - 004°34'09"E

Vertical limits :

SFC / 500 ft ASFC