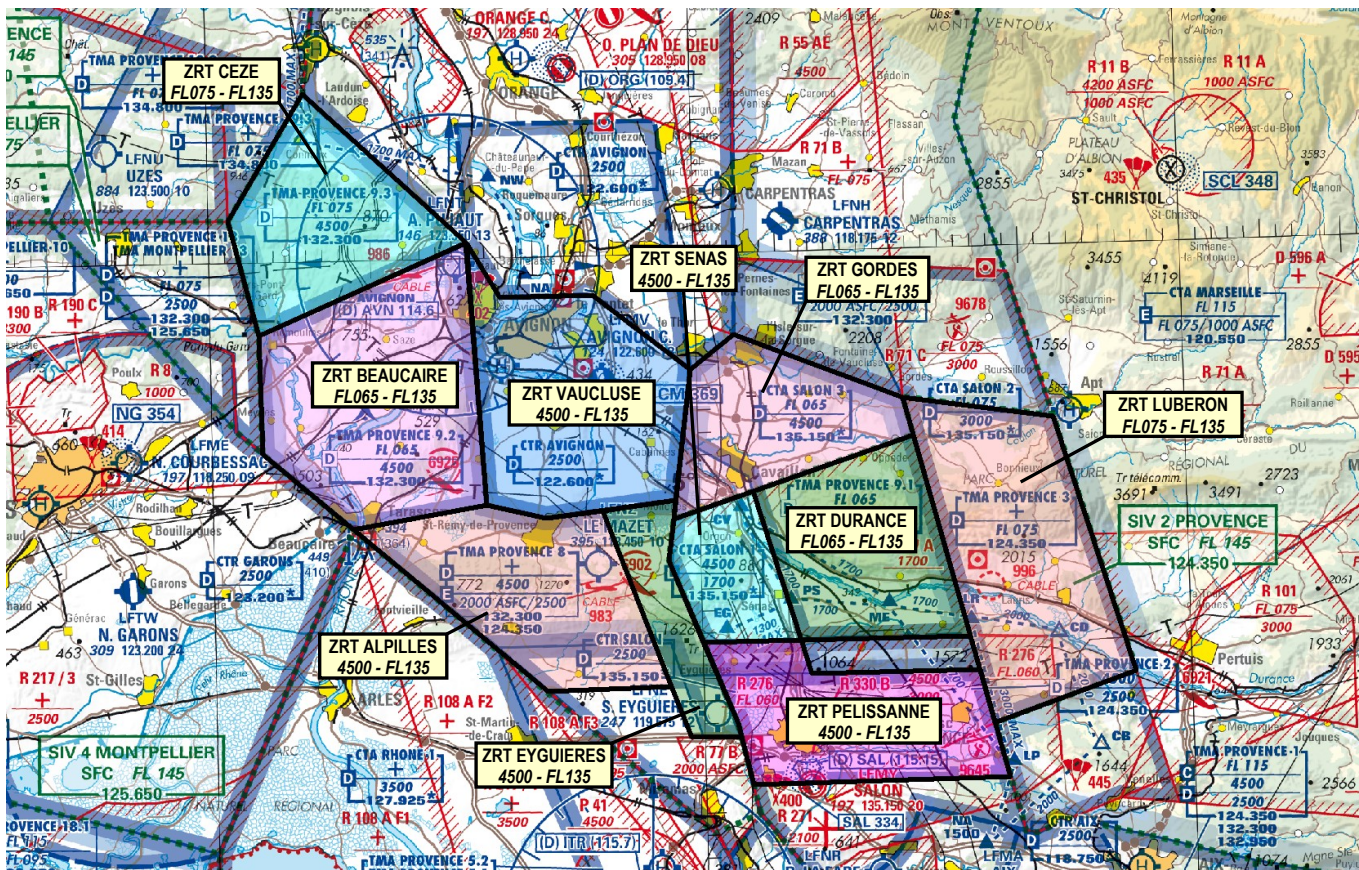


Subject : Creation of 10 Temporary Restricted Areas (ZRT) : CEZE, BEAUCAIRE, VAUCLUSE, EYGUIERES, GORDES, ALPILLES, SENAS, PELISSANNE, DURANCE, LUBERON (FIR : Marseille LFMM)

With effect : From 16 July 2021 to 15 January 2022



Excerpt from 1 / 500 000 ICAO map 2021 IGN edition

ACTIVITY

Gliding activities reserved only for the organisations who signed a Protocol with the ZRT managing authority.
Glinters flying without transponder during activity time slots.

DATES AND TIMES OF ACTIVITY

From 16 JUL 2021 to 15 JAN 2022, from SR-30' to SS+30'

USER INFORMATION

Actual activity and upper limit provided by PROVENCE APP 124.350 MHz or 132.300 MHz – see paragraph « Relevant authority contact details » below

STATUS

Tempo Restricted Areas (ZRT) replacing the portions of airspace they overlap.

MANAGING AUTHORITY

PROVENCE APP

ENTRY CONDITIONS

GAT IFR / OAT I and T :

Compulsory avoidance during activity except for :

- ACFT conducting rescue, assistance or public safety missions, when their mission is not compatible with the ZRT avoidance,
- ACFT with ATC clearance

GAT VFR, OAT V :

Entry is possible for VFR upon authorization from Provence APP; Radio contact is mandatory with Provence APP

SERVICES PROVIDED

Flight information or alerting

LATERAL AND VERTICAL LIMITS	
ZRT CEZE 44°07'31" N,004°35'59" E 44°01'53" N,004°31'14" E 43°56'45" N,004°33'00" E 44°00'44" N,004°45'56" E 44°07'31" N,004°35'59" E FL075 / FL135	ZRT BEUCAIRE 44°00'44" N,004°45'55" E 43°49'00" N,004°46'50" E 43°48'01" N,004°38'37" E 43°51'29" N,004°33'07" E 43°56'45" N,004°33'00" E 44°00'44" N,004°45'55" E FL065 / FL135
ZRT VAUCLUSE 43°58'15" N,004°47'57" E 44°00'44" N,004°45'56" E 43°49'00" N,004°46'50" E 43°48'20" N,004°50'30" E 43°49'00" N,004°58'30" E 43°54'50" N,004°59'35" E 43°58'15" N,004°53'40" E 43°58'15" N,004°47'57" E 4500FT AMSL / FL135	ZRT ALPILLES 43°48'01" N,004°38'37" E 43°49'00" N,004°46'50" E 43°48'20" N,004°50'30" E 43°48'38" N,004°54'00" E 43°40'43" N,004°57'58" E 43°40'36" N,004°50'21" E 43°48'01" N,004°38'37" E 4500FT AMSL / FL135
ZRT EYGUIERES 43°38'23" N,005°02'12" E 43°38'25" N,004°59'07" E 43°40'43" N,004°57'58" E 43°48'38" N,004°54'00" E 43°49'00" N,004°58'30" E 43°48'10" N,004°58'21" E 43°46'20" N,004°58'00" E 43°42'38" N,005°00'00" E 43°39'00" N,005°02'00" E 43°38'23" N,005°02'12" E 4500FT AMSL / FL135	ZRT GORDES 43°48'10" N,004°58'21" E 43°54'50" N,004°59'35" E 43°56'20" N,005°02'20" E 43°53'21" N,005°12'39" E 43°51'40" N,005°13'15" E 43°49'19" N,005°03'17" E 43°48'10" N,004°58'21" E FL065 / FL135
ZRT SENAS 43°49'19" N,005°03'17" E 43°42'38" N,005°06'00" E 43°42'38" N,005°00'01" E 43°46'20" N,004°58'00" E 43°48'10" N,004°58'21" E 43°49'19" N,005°03'17" E 4500FT AMSL / FL135	ZRT PELISSANNE 43°42'38" N,005°06'00" E 43°42'38" N,005°00'01" E 43°39'00" N,005°02'00" E 43°38'23" N,005°02'12" E 43°36'15" N,005°02'52" E 43°36'16" N,005°18'40" E 43°41'05" N,005°16'58" E 43°41'08" N,005°06'37" E 43°42'38" N,005°06'00" E 4500FT AMSL / FL135
ZRT DURANCE 43°42'37" N,005°16'26" E 43°42'38" N,005°06'00" E 43°49'19" N,005°03'17" E 43°51'40" N,005°13'15" E 43°42'37" N,005°16'26" E FL065 / FL135	ZRT LUBERON 43°53'21" N,005°12'39" E 43°52'19" N,005°21'55" E 43°40'51" N,005°26'34" E 43°38'42" N,005°17'48" E 43°42'37" N,005°16'26" E 43°53'21" N,005°12'39" E FL075 / FL135

SPECIAL PROVISIONS
ZRT LUBERON : defined excluding Area LF-R 71 A ZRT PELISSANNE : activation not possible if Area LF-R 276 is active

RELEVANT AUTHORITY CONTACT DETAILS
For ZRT SENAS, DURANCE, LUBERON, PELISSANNE : PROVENCE APP, 124.350 MHz For ZRT CEZE, BEUCAIRE, VAUCLUSE, ALPILLES, EYGUIERES, GORDES : PROVENCE APP, 132.300 MHz