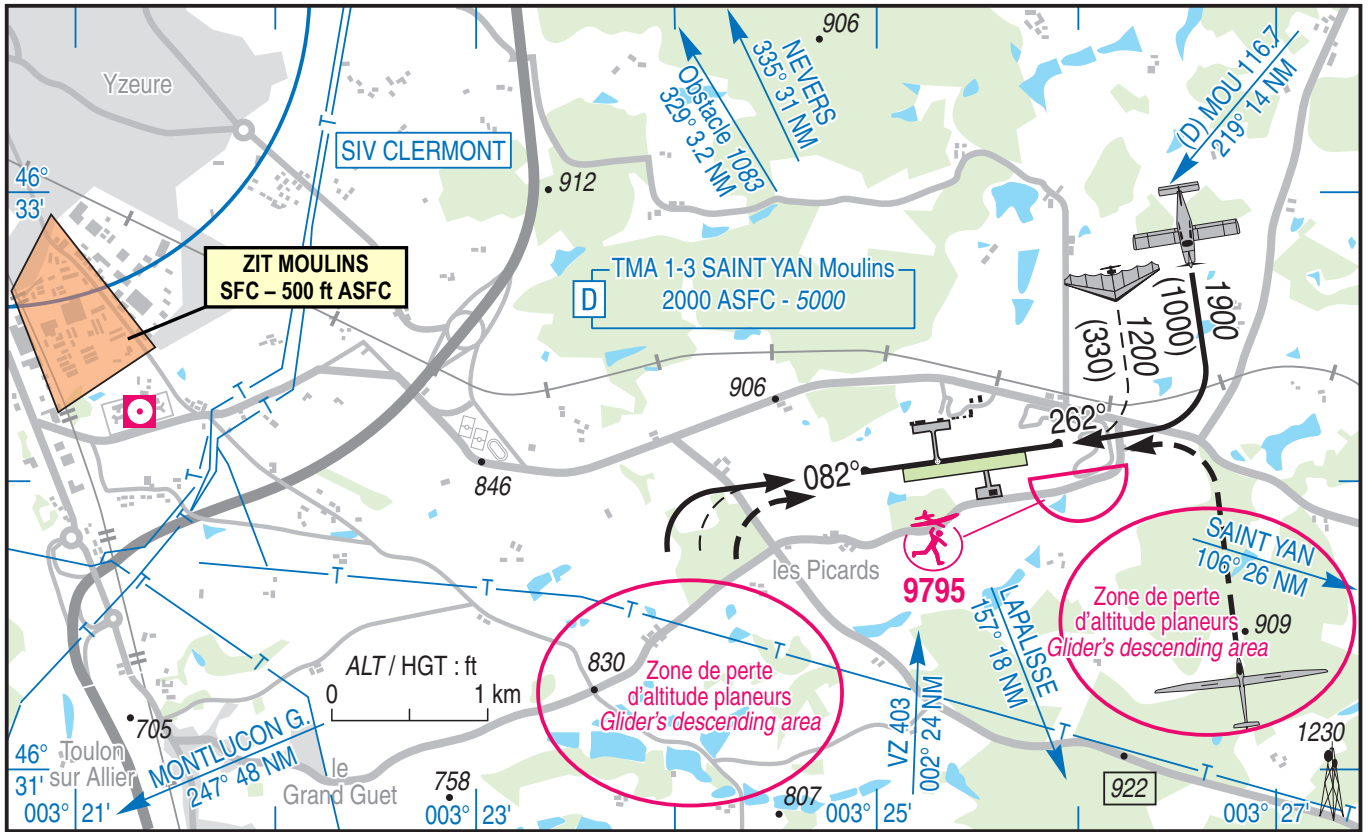


Subject : Creation of a Tempo Prohibited Area (ZIT) over MOULINS

With effect : From 01 juillet 2021 to 20 avril 2022

Location : FIR : Paris LFFF - AD : Moulins Montbeugny LFHY



Excerpt from VAC AD 2 LFHY ATT 01 - 05 NOV 2020 edition

ACTIVITY

Overflight of specific Defense installations prohibited.

DATES AND TIMES ACTIVITY

H24

STATUS

Temporary Prohibited Area (ZIT) replacing the portions of airspaces with which it overlaps.

ENTRY CONDITIONS

Entry prohibited for any unmaned ACFT, except unmaned ACFT conducting a mission for State services (defense, gendarmerie, police, customs, public safety, rescue and EDF).

Derogation subject to the agreement of the « Commandement de la Défense Aérienne et des Opérations Aériennes ».

Request form : consult the website : <https://sites.google.com/site/derogzonesinterdites>

and E-mail : cdaoa-bao-cnoa-accord-zones-interdites.resp.fct@intra.def.gouv.fr

« Centre National des Opérations Aériennes ».

Phone : +33(0)8 00 39 73 75 (Toll free) or +33(04 37 50 38 23

SERVICES PROVIDED

Flight information and alert.

LATERAL AND VERTICAL LIMITS

Lateral limits :

46° 32' 52" N, 003° 20' 52" E
46° 32' 28" N, 003° 21' 21" E
46° 32' 16" N, 003° 20' 55" E
46° 32' 39" N, 003° 20' 42" E
46° 32' 52" N, 003° 20' 52" E

Vertical limits :

SFC / 500 ft ASFC