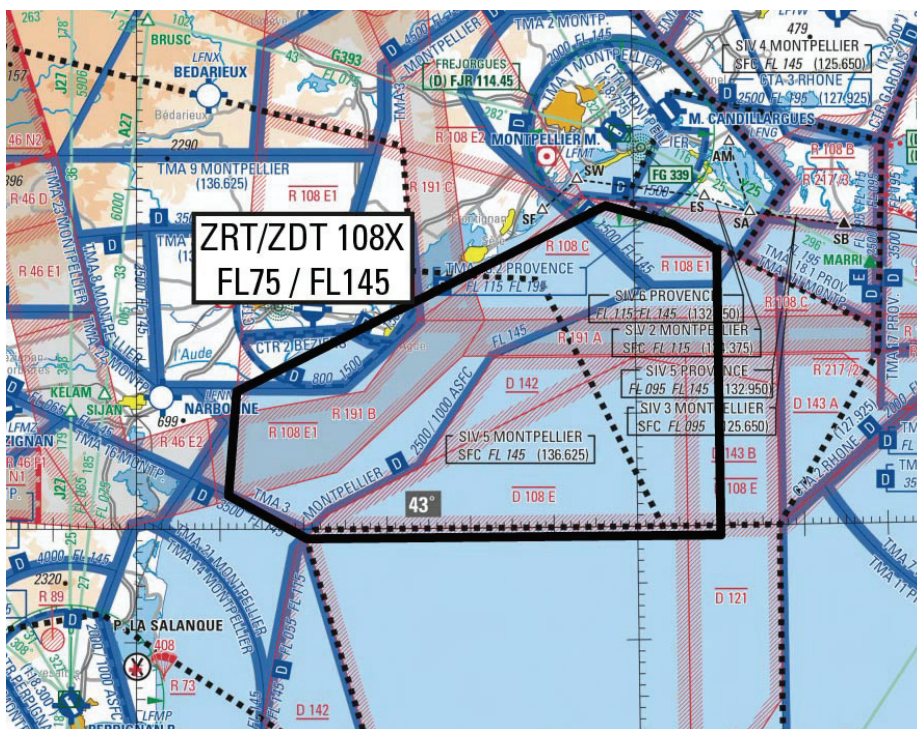


**Subject : Creation of a Tempo Restricted Area and Tempo Danger Area (ZRT/ZDT) 108 X (FIR : Marseille LFMM)**

**With effect : From 17 June to 16 December 2021**



From 1 : 1 000 000 « France Sud » SIA map 2021 edition

| ACTIVITY  |
|---|
| Test and airworthiness approval flights   |
| DATES AND TIMES OF ACTIVITY   |
| <b>Activation possible from 17 JUN 2021 to 16 DEC 2021 :</b><br><b>0830-1730 (SUM : - 1 HR)</b><br>Simultaneous activation of Tempo Area 108 X and Areas LF-R 108 E1, LF-D 108 E or LF-D 121 is not possible. |
| USER INFORMATION  |
| <b>Actual activity provided by :</b><br>- MARSEILLE CONTROLE/INFO<br>- MONTPELLIER APP/INFO   |
| MANAGING AUTHORITY  |
| « Centre de Contrôle d'Essais et de Réception d'Aix en Provence » (CCER Aix).   |

#### STATUS

Temporary Restricted Area (ZRT) for the portion located within 12 NM from coasts (territorial waters limit),  
Temporary Danger Area (ZDT) for the portion located beyond 12 NM from coasts (territorial waters limit).

These Tempo Areas coexist with the controlled airspace (parts of MONTPELLIER TMA) with which they overlap.

#### ENTRY CONDITIONS

- **For the portions overlapping with MONTPELLIER TMA and/or for the ZRT :** OAT (not involved in the activity) and GAT, entry is possible upon authorization from MONTPELLIER APP.
- **For the portions out of MONTPELLIER TMA and/or for the ZDT :** Airspace users must be aware of the particularly dangerous nature of the activities taking place in these Areas. It is highly recommended not to enter these Areas. Comply with the instructions of the usual ATC units.

#### SERVICES PROVIDED

OAT conducting test flights or airworthiness approval flights : control, flight information and alert are provided within the ZRT/ZDT by the managing authority.

GAT and OAT not involved in the activity : within the portions of ZRT/ZDT coexisting with the controlled airspace of Montpellier approach control centre, MONTPELLIER APP provides, to users cleared into these tempo Areas, the Air Traffic Services in accordance with the class of this controlled airspace, and the Letter Of Agreement in force between the Montpellier APP control centre and the "centre de contrôle d'essais et réception d'Aix en Provence" ("CCER Aix").

#### LATERAL AND VERTICAL LIMITS

43°28'21" N,003°56'35" E  
43°12'10" N,003°12'00" E  
43°03'00" N,003°11'00" E  
42°59'10" N,003°20'23" E  
42°59'10" N,004°09'56" E  
43°24'19" N,004°09'56" E  
43°26'37" N,004°04'42" E  
43°28'21" N,003°56'35" E

FL075 / FL145

**SPECIAL PROVISIONS**

**Urgent missions :**

Aircraft flying as part of urgent missions (Emergency Medical Service, customs, public safety, Gendarmerie, Police, Maritime Patrol...) and not able to avoid these Temporary Areas (ZRT/ZDT 108 X) where activities are taking place, will be prioritized so they can fly through ZRT/ZDT 108 X. Transiting of these flights will be coordinated with "CCER Aix".

**ZRT/ZDT 108X :**

The activation of ZRT/ZDT 108 X implies the activation Montpellier TMA parts 1 and 3 and MONTPELLIER SIV parts 5 and 1.  
The activation of ZRT/ZDT 108 X implies the non activation of the following Areas : LF-R 108 E1, LF-D 108 E, LF-D 121.

**RELEVANT AUTHORITIES CONTACT DETAILS**

**Before activity :**

DGA Essais en Vol / Division CER / Coordination  
Site d'essai d'Istres  
13804 Istres Cedex  
Phone : +33(0)4.42.48.36.09 – +33(0)4.42.48.36.67 or 36.68 / Fax : +33(0)4.42.48.36.82

**During activity :**

Centre de Contrôle d'Essais et de Réception d'Aix en Provence (CCER Aix) :  
Phone : +33(0)4.42.33.75.05