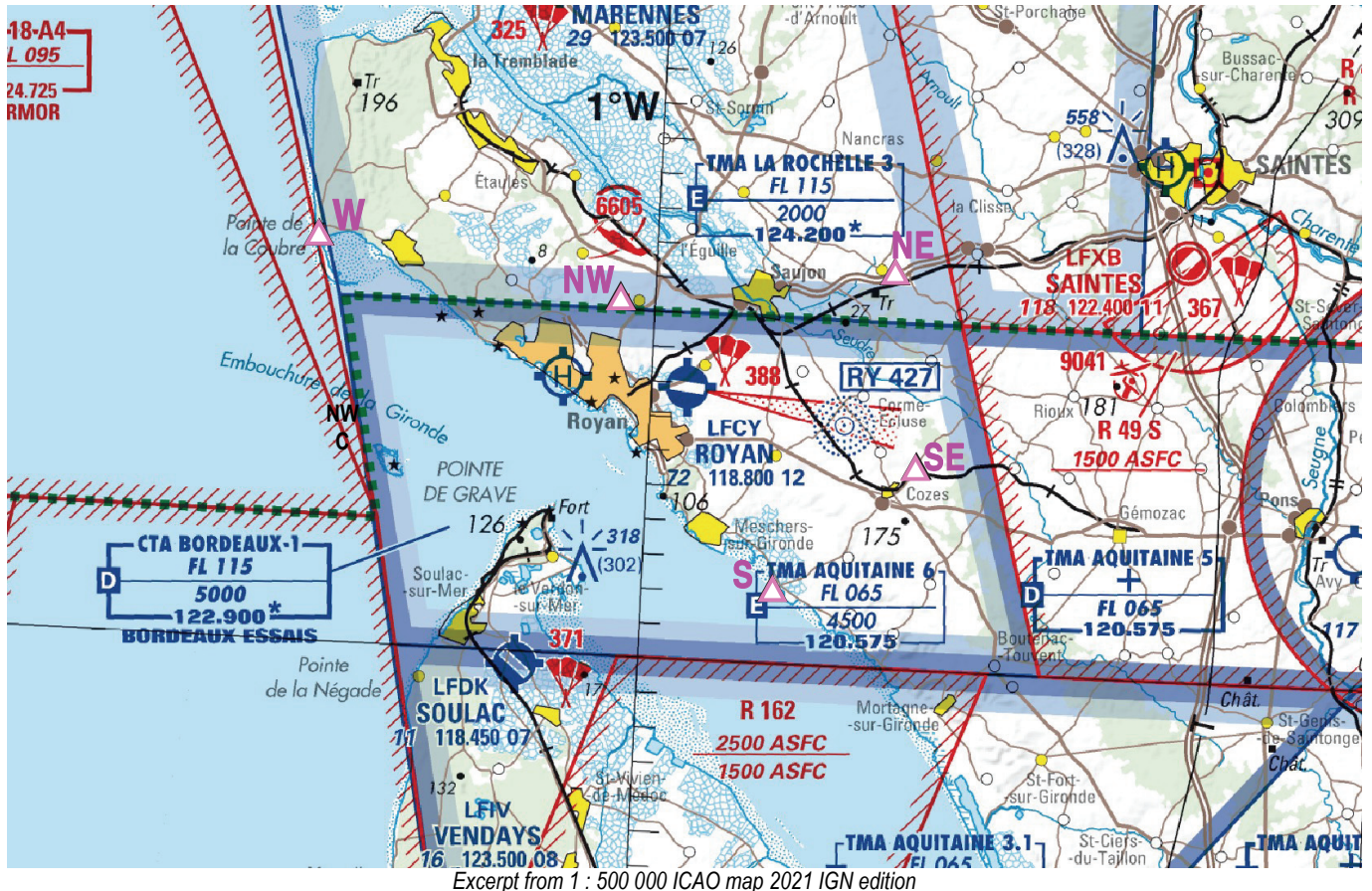


Subject : Creation of VFR reporting points for Royan (FIR : Bordeaux LFBB)

With effect : From 15 JUL 2021 to 27 JAN 2022

Location: FIR : Bordeaux LFBB - AD : Royan Médis LFCY



DESCRIPTION

VFR reporting points have been created in the vicinity of Royan LFCY in order to improve identifications of VFR position reports and clarify radio communications on ROYAN AFIS FREQ.

DATES AND TIMES OF ACTIVITY

H24

STATUS

Recommended VFR reporting point.

POINT COORDINATES

Point W : La Coubre guiding light	45°41'47"N 001°14'00"W
Point NW : Saint-Sulpice Water Tower	45°40'16"N 001°01'18"W
Point NE : Saint-Romain interchange	45°41'21"N 000°50'07"W
Point SE : Cozes quarries	45°35'45"N 000°48'54"W
Point S : Talmont church	45°32'05"N 000°54'33"W