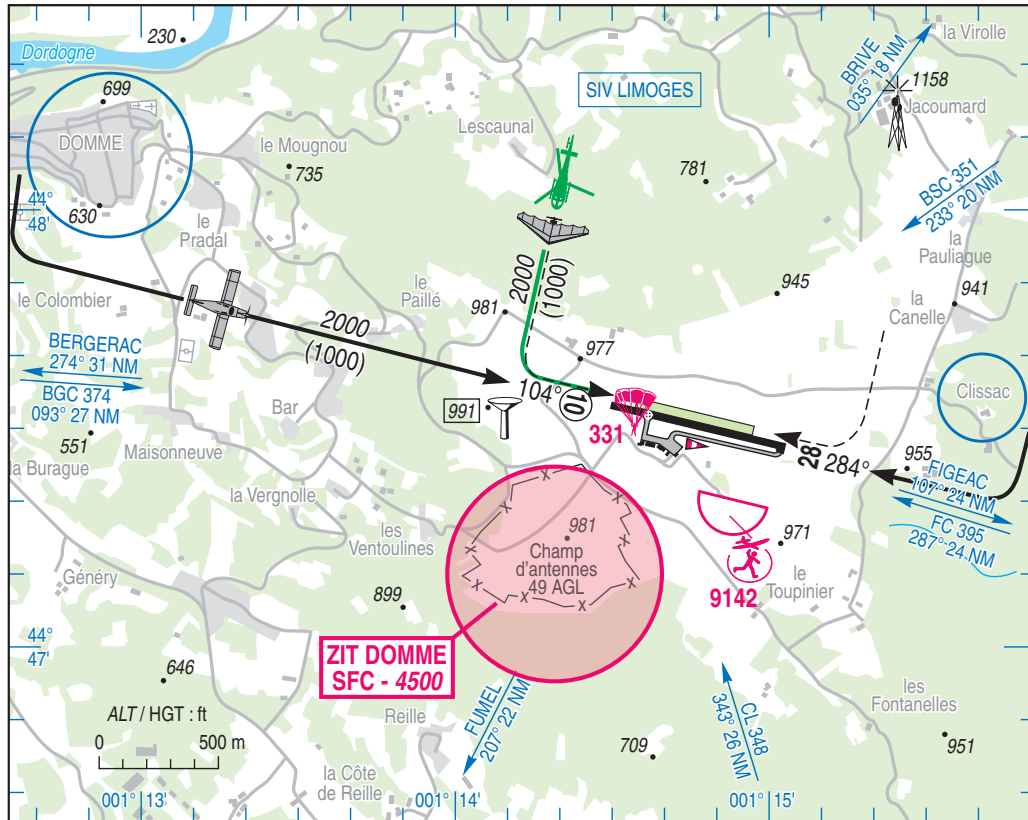


**Subject** : Creation of a Temporary Prohibited Area (ZIT) Domme (FIR : Bordeaux LFBB - AD : Sarlat-Domme LFDS)  
**With effect** : From 27 May 2021 to 20 April 2022

This AIP SUP supersedes AIP SUP 070/21 (CHG : chart).



Excerpt from AIP VAC "AD 2 LFDS ATT 01" WEF 14 SEP 2017

ACTIVITY
Low altitude flying prohibited over specific Defence installations
DATES AND TIMES OF ACTIVITY
H24
STATUS
Temporary Prohibited Area (ZIT) replacing the portions of airspace it overlaps.
ENTRY CONDITIONS
GAT/OAT : entry is prohibited H24, including for unmanned ACFT; entry is possible for : ♦ ACFT conducting assistance, rescue or public safety missions when the avoidance is not compatible with these missions ; ♦ ACFT with authorization from the Centre manager (Defense ACFT, State unmanned ACFT).
SERVICES PROVIDED
Flight information and alert.
LATERAL AND VERTICAL LIMITS
Circle radius 450 m centred at : 44°47'10"N - 001°14'19"E SFC - 4500 FT AMSL
RELEVANT AUTHORITIES CONTACT DETAILS
Centre manager Phone : +33(0)5 53 30 85 36 Cellphone : +33(0)6 38 73 49 98 E-mail : <a href="mailto:bur.c2sq05@intradef.gouv.fr">bur.c2sq05@intradef.gouv.fr</a>