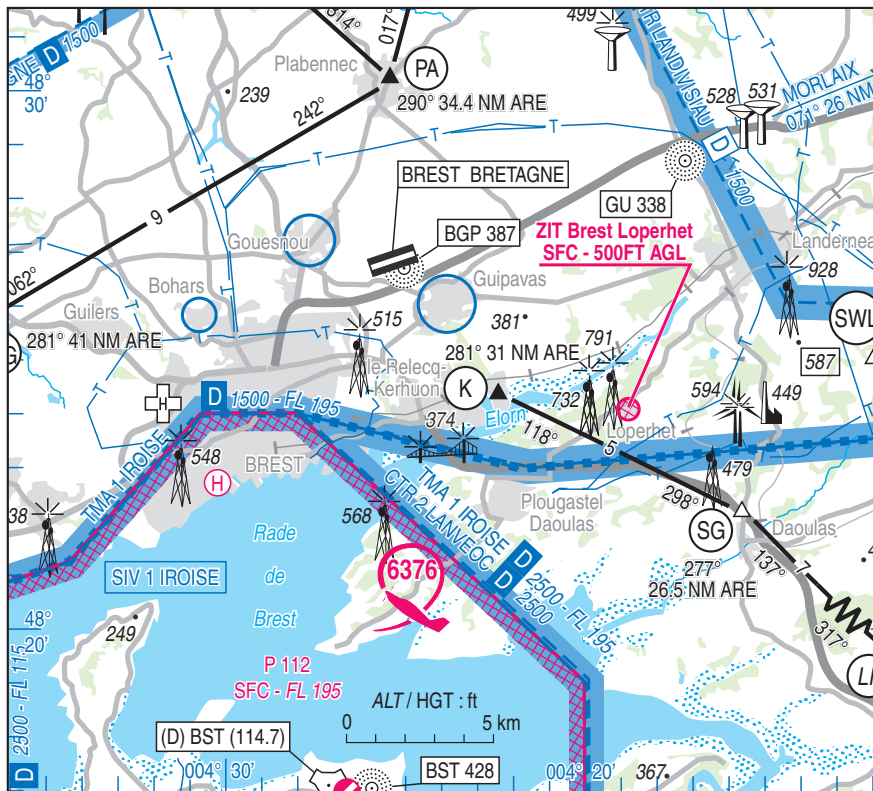


**Subject** : Creation of 3 Temporary Prohibited Areas (ZIT) in Brest FIR LFRR  
**With effect** : From 22 APR 2021 to 20 APR 2022

**Location**: FIR : Brest LFRR - AD : Landivisiau LFRJ, Lorient Lann Bihoué LFRH – out of AD : Brest Loperhet

ACTIVITY
Low altitude flying prohibited over Defense facilities
DATES AND TIMES OF ACTIVITY
H24

**1. ZIT BREST LOPERHET**



MANAGING AUTHORITY
NIL

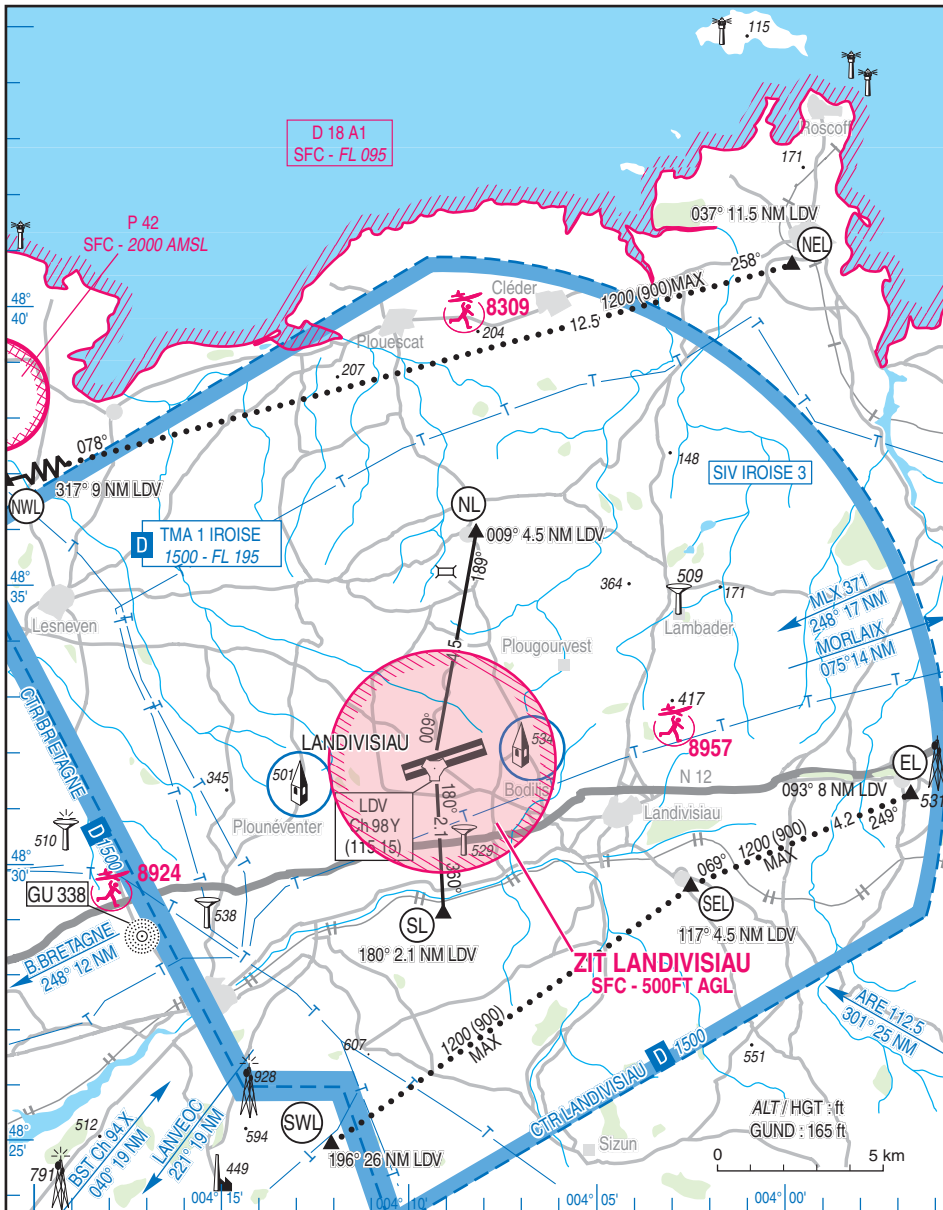
STATUS
Temporay Prohibited Area (ZIT) replacing the portions of airspace with which it overlaps.

SERVICES PROVIDED
Flight information and alert

LATERAL AND VERTICAL LIMITS
<u>Lateral limits</u> : circle radius 0.2 Nm (370 metres) centred at : 48° 24' 05" N - 004° 18' 51" W
<u>Vertical limits</u> : SFC / 500 ft AGL

ENTRY CONDITIONS
Entry is prohibited for all unmanned UAV ACFT, except unmanned ACFT conducting State missions (Defense, gendarmerie, police, customs public safety, rescue missions or mission for EDF) Entry is possible upon agreement from "Commandement de la Défense Aérienne et des Opérations Aériennes", Request form available at : <a href="https://sites.google.com/site/derogzonesinterdites">https://sites.google.com/site/derogzonesinterdites</a> ; e-mail : <a href="mailto:cdaoa-bao-cnoa-accord-zones-interdites.resp.fct@intra.def.gouv.fr">cdaoa-bao-cnoa-accord-zones-interdites.resp.fct@intra.def.gouv.fr</a> Centre National des Opérations Aériennes, phone : +33(0)800 39 73 75 (toll free) or +33(0)4 37 50 38 23

2. ZIT LANDIVISIAU



Excerpt from Landivisiau DIA VAC « AD 2 LFRJ APP 01 » WEF 28 MAR 2019

MANAGING AUTHORITY
LANDI TWR

STATUS
Tempo Prohibited Area (ZIT) coexisting with the airspace with which it overlaps.

SERVICES PROVIDED
Services provided in accordance with the classes of the portions of airspace with which the ZIT coexists.

LATERAL AND VERTICAL LIMITS
<p><u>Lateral limits</u> Circle radius 2 Nm centred at : 48°31'49"N - 004°09'06"W (LFRJ ARP)</p> <p><u>Vertical limits</u> SFC / 500 FT AGL</p>

ENTRY CONDITIONS

GAT/OAT : entry is prohibited, including for unmanned ACFT;

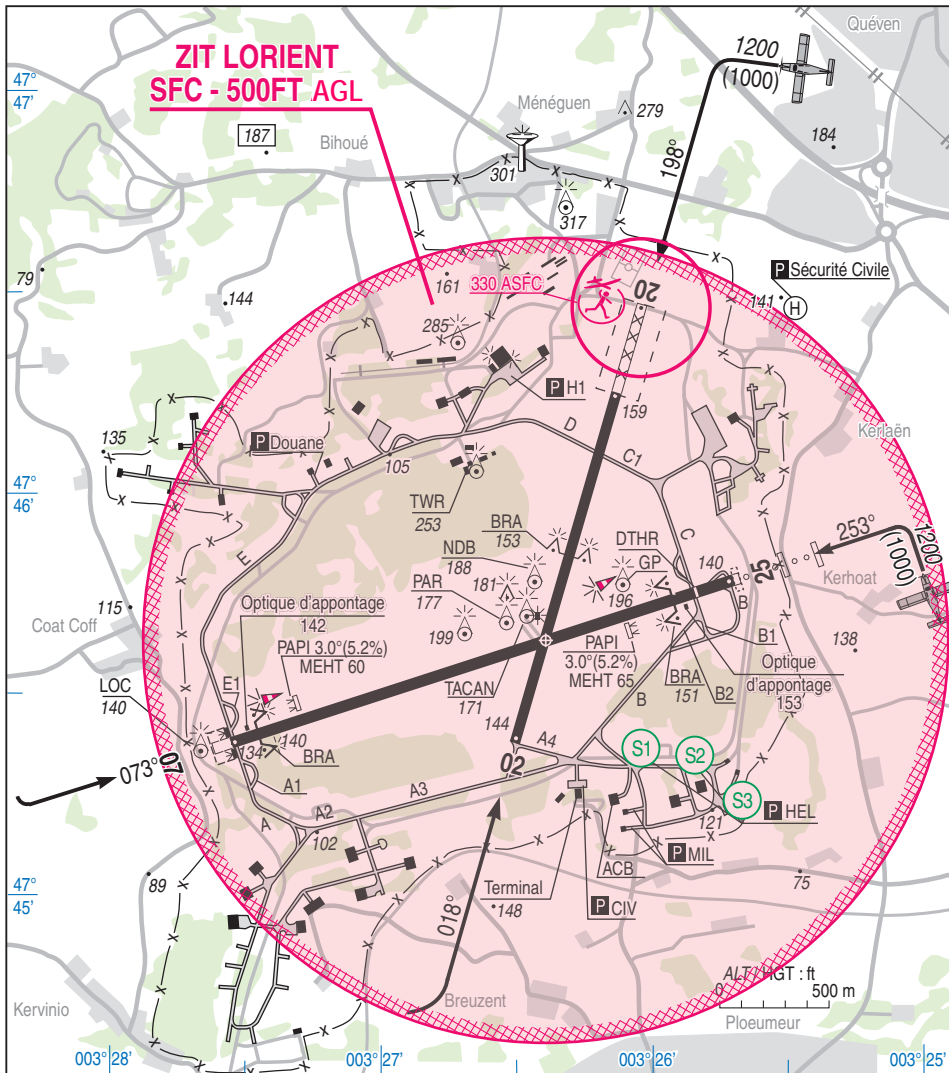
Entry is possible for :

- aircraft conducting assistance, rescue or public safety missions, when the avoidance is not compatible with these missions;
- Defense ACFT, including State unmanned ACFT;
- Outbound and inbound ACFT at Landivisiau AD with prior authorization from Managing Authority or ATC clearance.

ADDITIONAL PROVISIONS

Aeronautical activities under protocol with Managing Authority remain available.

3. ZIT LORIENT



MANAGING AUTHORITY
Lorient TWR
STATUS
Temporary Prohibited Area (ZIT) coexisting with the airspace with which it overlaps.
SERVICES PROVIDED
Services provided in accordance with the classes of the portions of airspace with which the ZIT coexists.
LATERAL AND VERTICAL LIMITS
Circle radius 1 NM centred at 47°45'38"N, 003°26'24"W (Lorient Lann Bihoué ARP)
SFC / 500 FT AGL

ENTRY CONDITIONS
GAT/OAT : entry is prohibited including for unmanned UAV ACFT;
Entry is possible for :
<ul style="list-style-type: none"> <li>aircraft conducting assistance, rescue or public safety missions, when the avoidance is not compatible with these missions;</li> <li>Defense ACFT, including State unmanned ACFT;</li> <li>Outbound and inbound ACFT at Landivisiau AD with prior authorization from Managing Authority or ATC clearance.</li> <li>Aeronautical activities under protocol with Managing Authority remain available.</li> </ul>

ADDITIONAL PROVISIONS
Aeronautical activities under protocol with Managing Authority remain available.