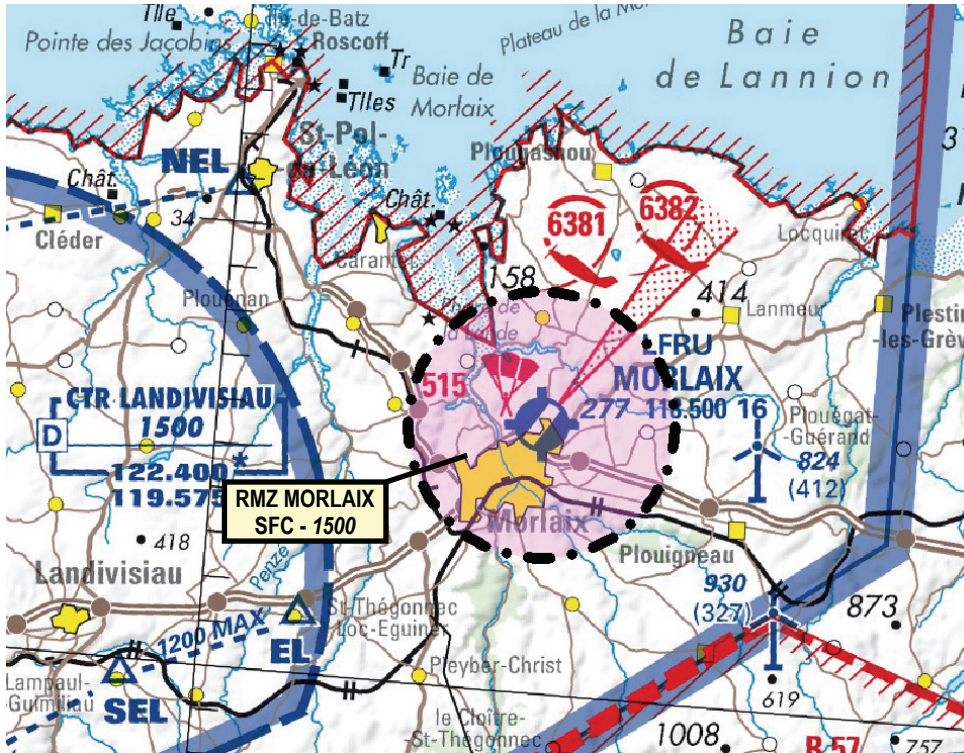


Subject : Creation of a RMZ (Radio Mandatory Zone) over Morlaix Ploujean AD LFRU

With effect : From 22 April 2021 to 20 April 2022

Location: FIR : Brest LFRR - AD : Morlaix Ploujean LFRU

As part of an experiment which started last year, a RMZ is created to protect air traffic and aerodrome procedures at Morlaix Ploujean AD during AFIS hours until 20 April 2022.



Excerpt from 1 : 500 000 IGN map 2021 edition

ACTIVITY
Aerodrome circuit and procedures
DATES AND TIMES OF ACTIVITY
RMZ active during AFIS hours (see VAC AD 2 LFRU TXT) Pilots must be aware that AFIS may be provided without prior notice out of published hours.
USER INFORMATION
Actual activity provided by : MORLAIX INFO : 118.500 MHz LANDI APP / INFO : 122.400 MHz IROISE APP : 119.575 MHz IROISE INFO : 119.575 MHz
CONTACT
Morlaix INFO
ENTRY CONDITIONS
GAT/OAT : radio contact is mandatory with Morlaix INFO : 118.500 MHz

STATUS AND SERVICES PROVIDED

When the RMZ is active, the services provided are those of class G airspace (flight information and alerting) and provided by Morlaix INFO.

LATERAL AND VERTICAL LIMITS

Circle radius 3 NM centred at :
48°36'03"N-003°49'00"W (LFRU ARP)

SFC / 1500 FT AMSL