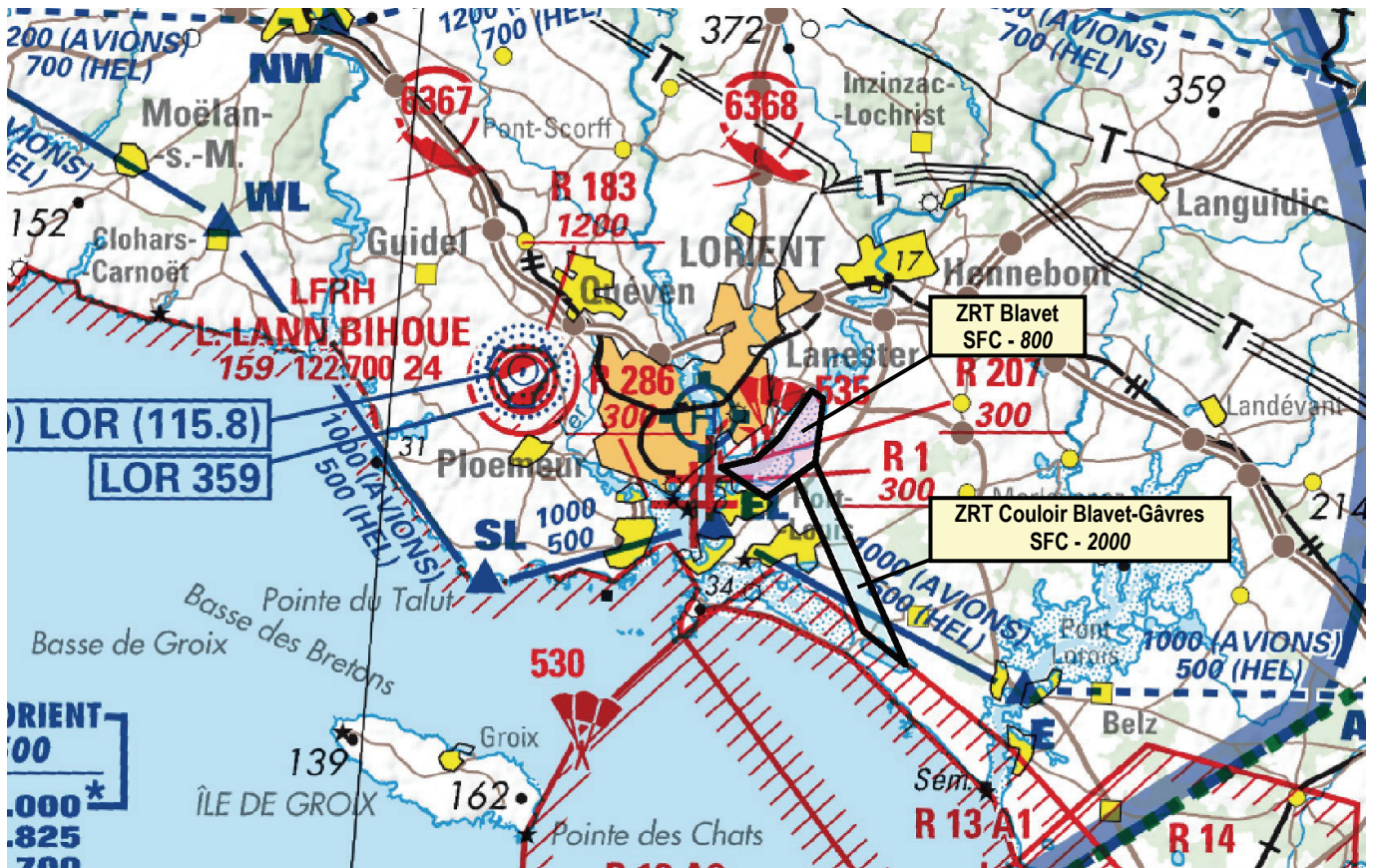


Subject : Creation of 2 Temporary Restricted Areas (ZRT) in Lorient CTR

With effect : From 23 April 2021 to 20 April 2022

Location: FIR : Brest LFRR - AD : Lorient Lann-Bihoué LFRH



Excerpt from 1 : 500 000 ICAO map 2021 IGN edition

ACTIVITY	
Unmanned State ACFT flying in Lorient CTR	
DATES AND TIMES OF ACTIVITY	
From MON to FRI except public HOL Activation is possible H24 with 15-minute prior notice.	
USER INFORMATION	
Lorient INFO (ATIS) :	129.125 MHz
Lorient TWR :	122.700 MHz
Lorient APP :	123.000 MHz
MANAGING AUTHORITY	
« Bureau OPS BFMC (Base des Fusiliers Marins et des Commandos) »	
STATUS	
Tempo Restricted Areas (ZRT) replacing the portions of airspace with which they overlap.	
ENTRY CONDITIONS	
GAT / OAT : compulsory avoidance.	
SERVICES PROVIDED	
NIL	

LATERAL AND VERTICAL LIMITS

ZRT Blavet

47°43'50"N - 003°19'29"W
 47°44'33"N - 003°18'14"W
 47°45'45"N - 003°18'08"W
 47°45'53"N - 003°18'28"W
 47°44'56"N - 003°19'17"W
 47°44'32"N - 003°19'52"W
 47°44'20"N - 003°20'48"W
 47°43'50"N - 003°19'29"W

SFC / 800 ft AMSL

ZRT Couloir Blavet-Gâvres

47°44'16.00"N - 003°18'44.00"W
 47°44'33.00"N - 003°18'14.00"W
 47°40'56.80"N - 003°15'18.79"W
 47°41'30.62"N - 003°16'32.04"W
 47°44'16.00"N - 003°18'44.00"W

SFC / 2000 ft AMSL

ADDITIONAL PROVISIONS

- ◆ ZRT "Blavet" and ZRT "Couloir Blavet-Gâvres" activation is possible only if Lorient CTR is active.
- ◆ When ZRT "Blavet" is active, parachuting activity No 535 Lorient Esperance is suspended.
- ◆ When ZRT "Couloir Blavet-Gâvres" is active, daytime transit VFR route is unavailable (in both directions) between points "EL" and "E", below 2000 ft AMSL.

RELEVANT AUTHORITIES CONTACT DETAILS

Outside of the activity :

« Bureau opération » : +33(0)2 97 12 64 74 or +33(0)2 97 12 62 57 or +33(0)2 97 12 66 85

During the activity :

Remote pilot : +33(0)6 75 88 50 33.