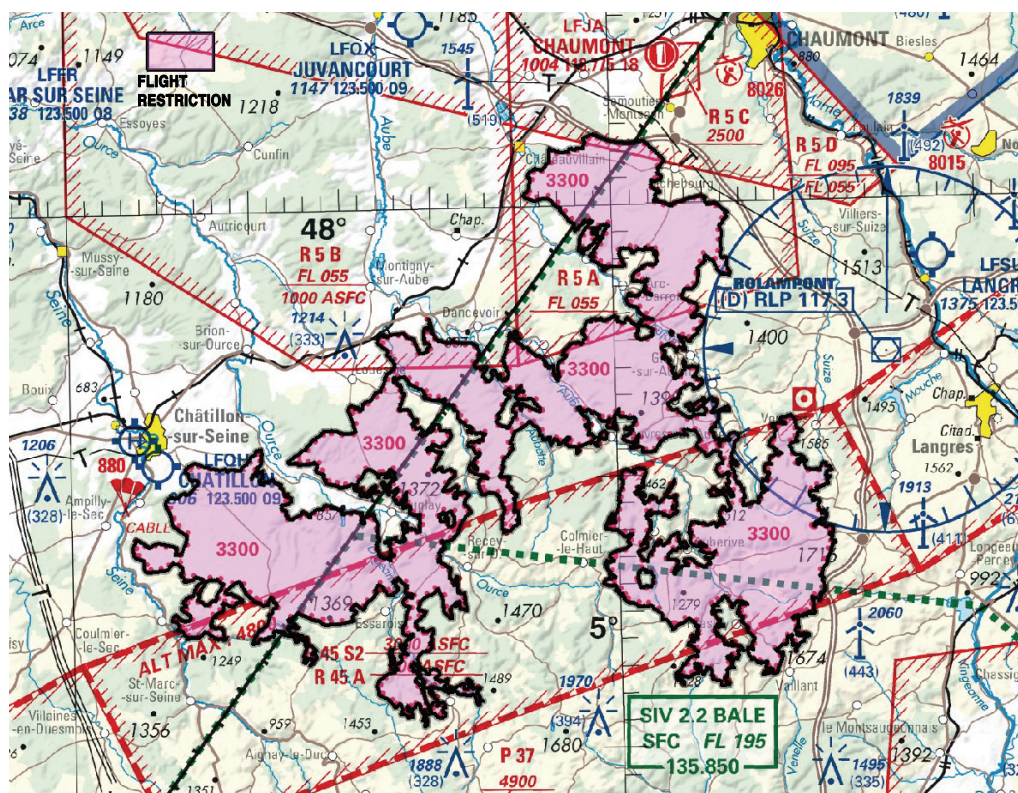


Subject : Flight restriction over « Parc national de forêts » (FIR : Paris LFFF, Reims LFEE)

With effect : From 22 April 2021 to 20 April 2022



Excerpt from 1 : 500 000 ICAO map 2021 IGN edition

TYPE OF RESTRICTION

Flying over National Park restricted.

IDENTIFICATION AND LATERAL LIMITS

« Parc national de forêts »
47°51'00" N - 004°55'00" E

MINIMUM OVERFLIGHT HEIGHT

3300 FT AGL

LOCATION

FIR : Paris LFFF, Reims LFEE.

Departments : Côte-d'Or and Haute-Marne

GENERAL OVERFLIGHT CONDITIONS

General conditions for GAT and OAT :

Flying over the park is prohibited below one thousand metres AGL (3 300 ft AGL) except for :

- Rescue, public safety, police and custom operational missions ;
- Defense training missions, including unmanned ACFT flights, in accordance with the conditions included in the Park charter ;
- Flights authorized by the Head of the Park (public enterprise) in accordance with the Park charter.

SPECIAL PROVISIONS

All the overflying conditions are specified in book 3, paragraph 3.9, condition 34 of the "Parc national de forêts" charter which can be consulted at "Parc national de forêts" headquarters and at their website :

<http://www.forets-parcnational.fr/fr/download/file/fid/1666>

RELEVANT AUTHORITIES CONTACT DETAILS

Parc national de Forêts
4, ruelle du monument
21290 LEUGLAY
Phone : +33(0)3 80 93 10 92
<http://www.forets-parcnational.fr>