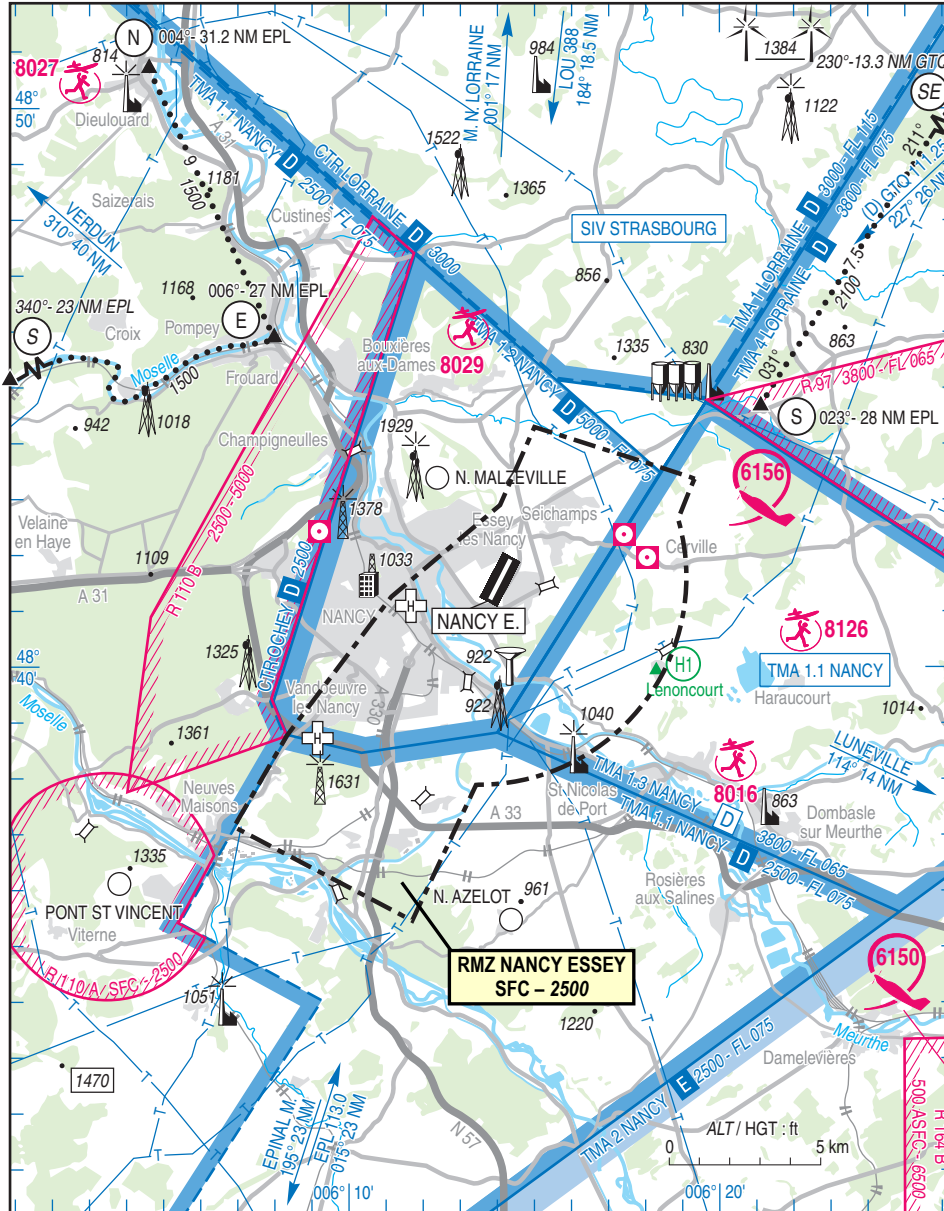


Subject : Creation of an experimental RMZ (Radio Mandatory Zone) over Nancy Essey AD LFSN
With effect : From 22 April 2021 to 20 April 2022

Location: FIR : Reims LFEE - AD : Nancy Essey LFSN

This AIP SUP supersedes AIRAC AIP SUP 038/21.



Excerpt from VAC « AD 2 LFSN APP 01 » WEF 05 DEC 2019

ACTIVITY
Aerodrome traffic and procedures

DATES AND TIMES OF ACTIVITY
AFIS HOR

USER INFORMATION
Nancy INFO : 119.600 MHz
Lorraine/Ochey APP : 127.250 MHz
Strasbourg INFO : 119.450 MHz

MANAGING AUTHORITY
NANCY ESSEY AFIS

STATUS
Radio Mandatory Zone (RMZ)

ENTRY CONDITIONS
GAT / OAT : compulsory radio contact with Nancy INFO

SERVICES PROVIDED
Flight information and alert

LATERAL AND VERTICAL LIMITS
Lateral limits
48°44'09"N - 006°15'02"E
48°43'21"N - 006°19'19"E
48°42'36"N - 006°18'50"E
thence clockwise by the arc of a circle radius 3.65 Nm centred at 48°41'32"N - 006°13'34"E (LFSN ARP)
48°37'54"N - 006°13'27"E
48°35'25"N - 006°11'42"E
48°37'06"N - 006°06'54"E
48°38'45"N - 006°08'20"E
48°41'14"N - 006°11'08"E
48°42'53"N - 006°14'04"E
Vertical limits:
SFC / 2500ft AMSL

ADDITIONAL INFORMATION

Users must be aware that AFIS services may be provided outside of published HOR.