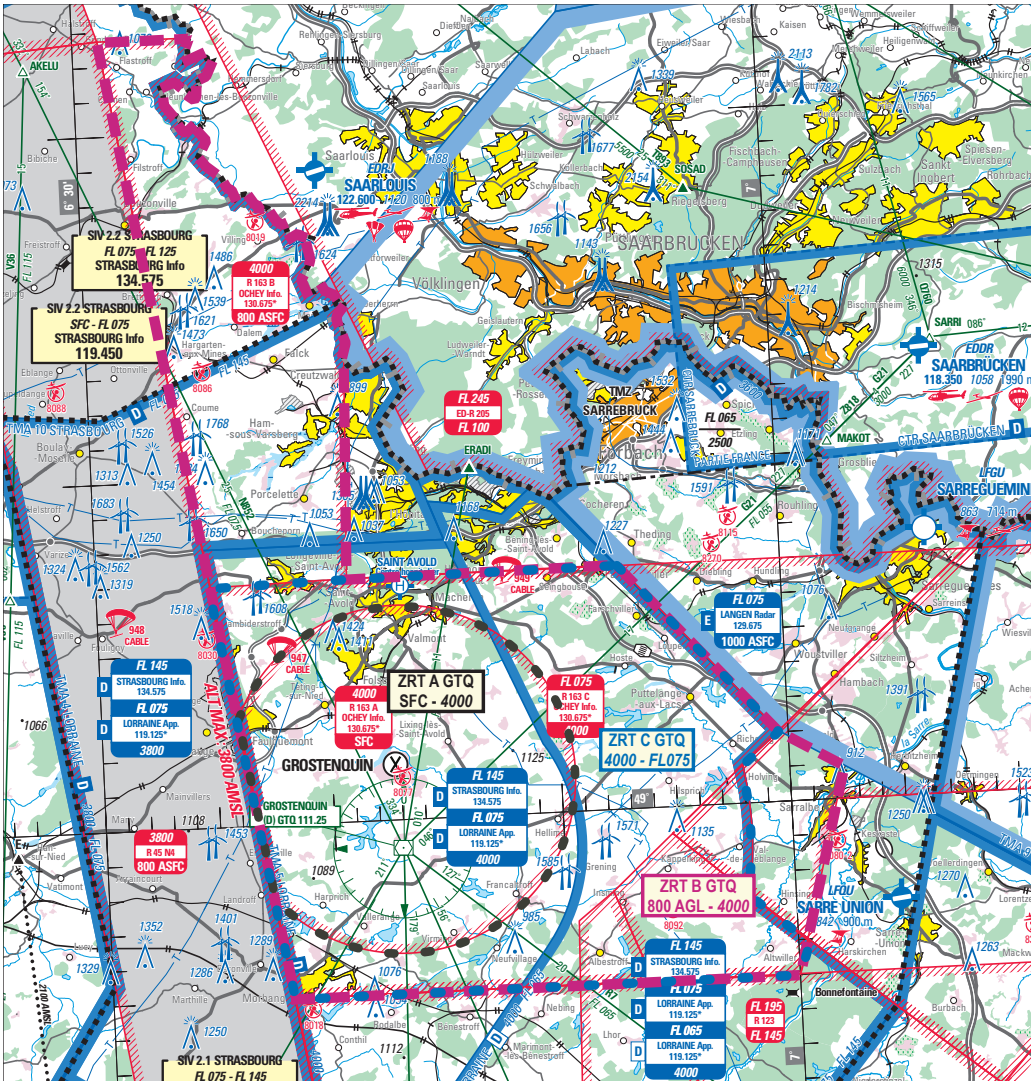


Subject : Creation of 3 Temporary Restricted Areas (ZRT) for MIL exercises over GROSTENQUIN (FIR : Reims LFEF)

With effect : From 04 JAN to 31 DEC 2021



Excerpt from 1 / 250 000 « Strasbourg Alsace Lorraine » SIA map 2020 edition

ACTIVITY
Parachuting and MIL ACFT flying as part of a MIL regional exercise

DATES AND TIMES OF ACTIVITY
From MON to FRI except public HOL
ZRT A and B activation is possible by NOTAM with 48 HR prior notice
ZRT C activation is possible according to Protocol

USER INFORMATION
Actual activity known by :
Lorraine APP : 119.125 MHz
Strasbourg INFO : 119.450 MHz
Ochey APP : 127.250 MHz

MANAGING AUTHORITY
EA-CCPGE

STATUS
Tempo Restricted Areas (ZRT) replacing, when they are active, the portions of airspace with which they overlap.

SERVICES PROVIDED
Flight information and alert

ENTRY CONDITIONS

GAT/OAT: compulsory avoidance except for ACFT involved in the exercise and ACFT conducting public safety, assistance or rescue missions, when the avoidance is not compatible with these missions; entry possible after permission from the managing authority

LATERAL AND VERTICAL LIMITS

ZRT A GTQ	ZRT B GTQ	ZRT C GTQ
<p>Identical to those of Restricted Area LF-R 163 A GROSTENQUIN POLYGONE</p> <p align="center">SFC/4000ft AMSL</p>	<p>49°07'00.00" N,006°41'00.00" E 49°07'03.00" N,006°52'50.00" E 49°02'02.00" N,006°59'35.00" E 49°00'57.00" N,007°02'23.00" E 48°55'00.00" N,007°00'00.00" E parallel 48°55'00.00" N 48°55'00.00" N,006°37'56.00" E 49°22'45.00" N,006°31'07.00" E 49°22'45.00" N,006°35'10.00" E French-German border 49°13'22.00" N,006°41'20.00" E 49°07'00.00" N,006°41'00.00" E excluding ZRT A GTQ and TMA 4 Lorraine</p> <p align="center">800FT AGL / 4000ft AMSL</p>	<p>Identical to those of Restricted Area LF-R 163 C GROSTENQUIN POLYGONE</p> <p align="center">4000ft AMSL / FL075</p>

ADDITIONAL PROVISIONS

Restricted areas LF-R 163 A, B and C GROSTENQUIN POLYGONE can not be activated during the ZRT A, B and C GTQ time slots.
 Model ACFT activities No 8077 GROSTENQUIN and No 8200 FOSCHVILLER remain available according to aeronautical publication.

RELEVANT AUTHORITIES CONTACT DETAILS

Before the activity:	During the activity:
<p>EA-CCPGE PHONE : 0049 63 71 83 86 040 / 0033 6 71 51 95 44 / 0033 6 32 26 52 89</p>	<p>EA-CCPGE PHONE : 0033 6 71 51 95 44 / 0033 6 32 26 52 89</p>