

APPROCHE AUX INSTRUMENTS

LA REUNION-ROLAND GARROS

Instrument approach

CAT A B C D

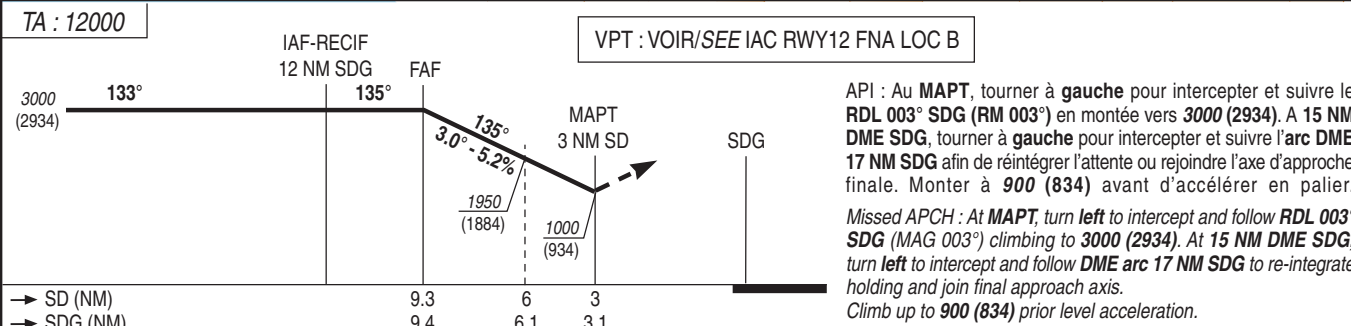
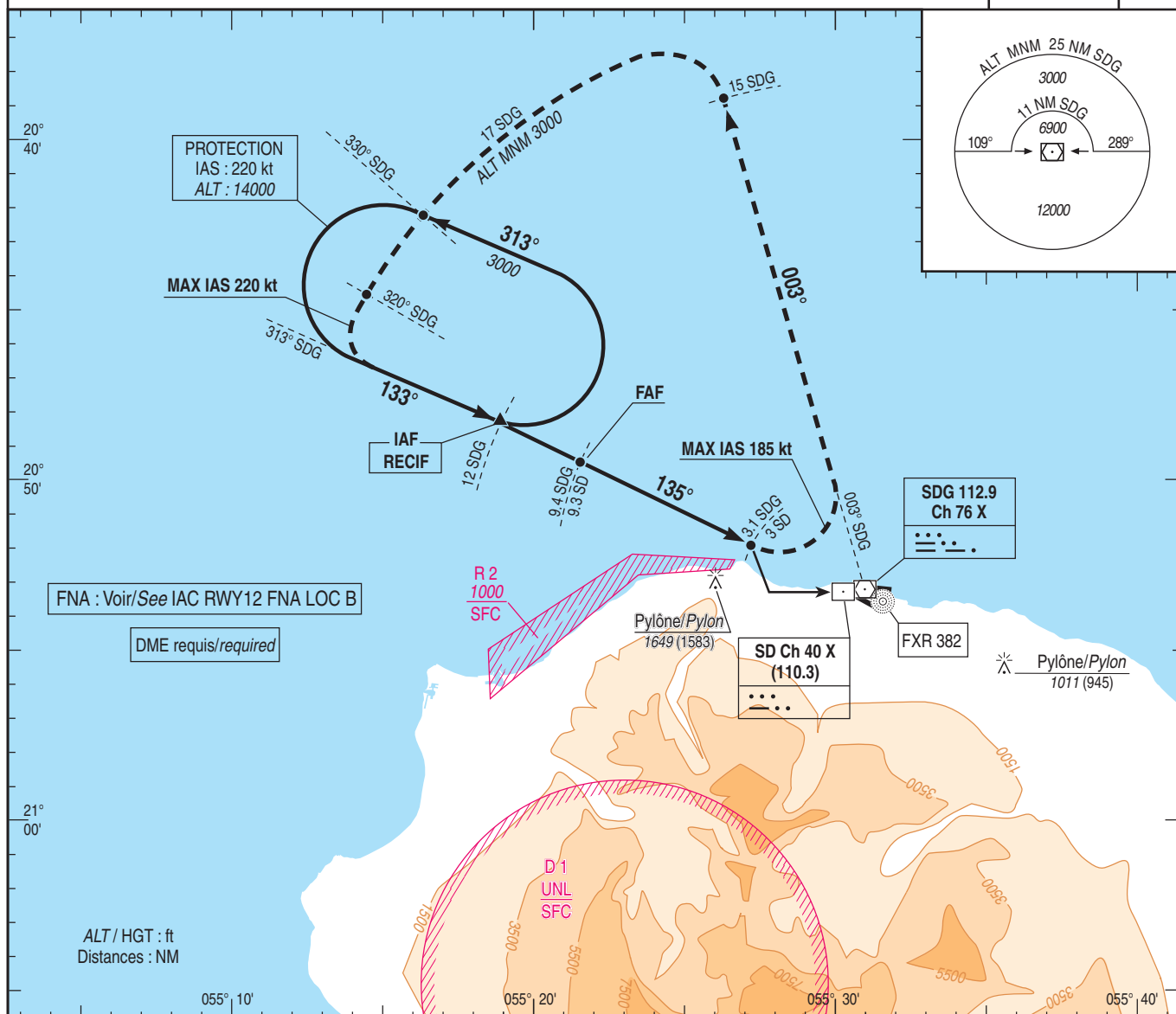
ALT AD : 66 (3 hPa), DTHR : 38

INA LOC b

ATIS : LA REUNION 126.800
APP : ROLAND GARROS Approche/Approach 127.200
TWR : ROLAND GARROS Tour/Tower 118.400

LOC - DME
SD 110.3
RDH : 61

VAR
19° W
(15)



MNM AD : distances verticales en pieds, VIS en mètres./Vertical distances in feet, VIS in metres. REF HGT : ALT AD

CAT	VPT		DME SD					
	MDA (H)	VIS	NM	7	6	5	4	3
A	1000 (930)	1500	ALT	2270	1950	1630	1310	1000
B		1600	(HGT)	(2204)	(1884)	(1564)	(1244)	(934)
C		2400						
D		3600						

Observations/Remarks : MVL interdites au Sud des pistes - PAPI RWY 12 : Pente 3,3° - 5,8° - MVL et VPT interdites en l'absence d'indication PAPI.
Circling prohibited S of RWY - PAPI RWY 12: Slope 3.3° - 5.8° - Circling and VPT prohibited when no PAPI indication.
Base OCH/OCH base : NIL