

APPROCHE AUX INSTRUMENTS

MOOREA TEMAÉ

Instrument approach

CAT A B

RNP RWY 12

ALT AD : 16 (1 hPa), THR : 13

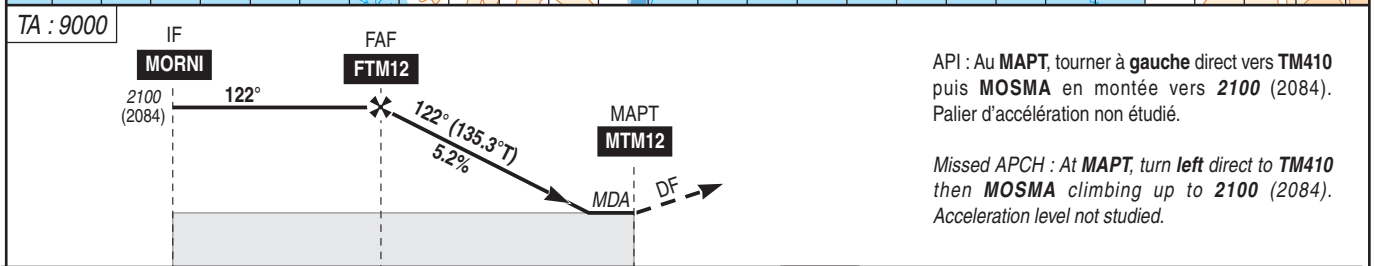
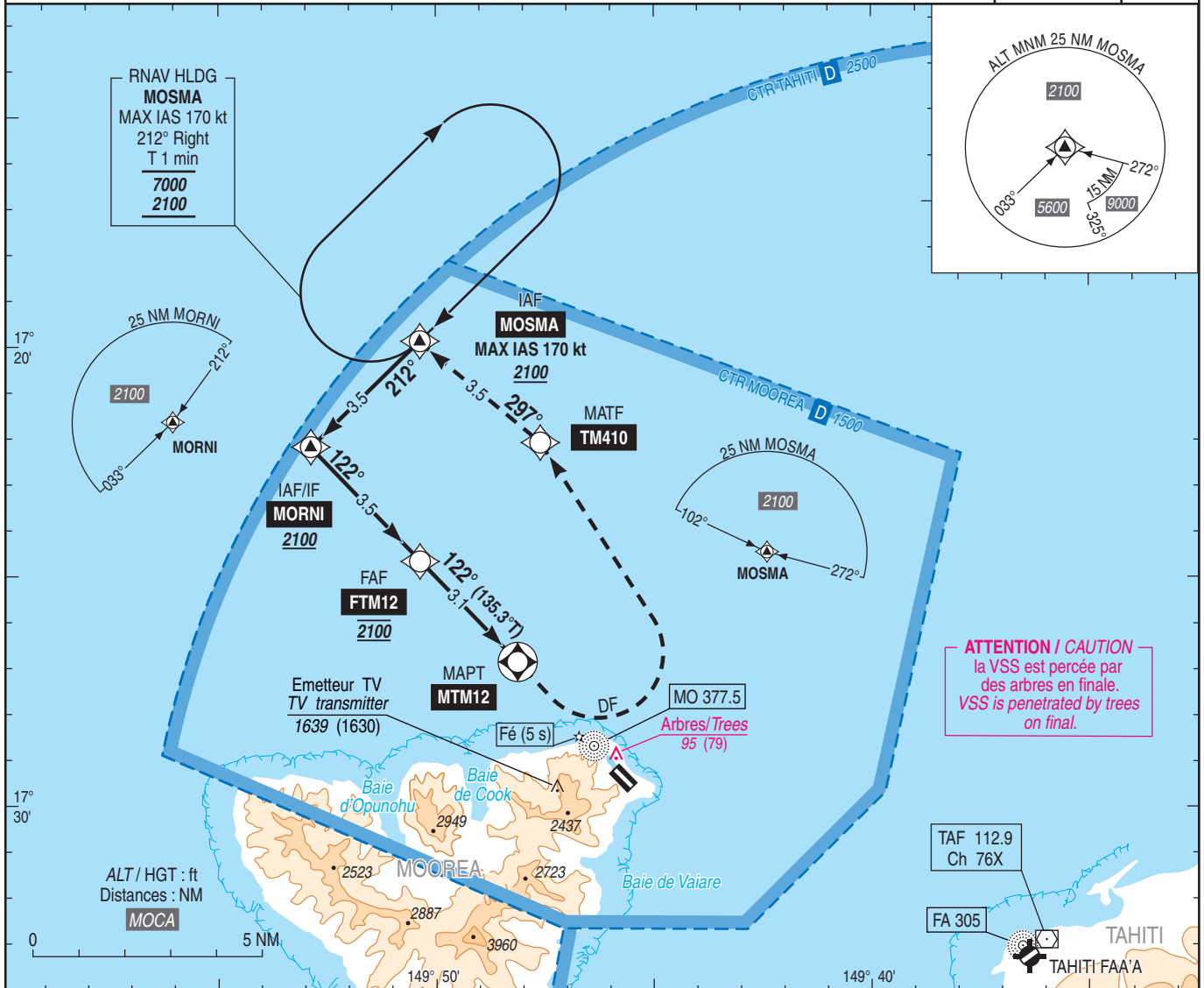
APP : assurée par/provided by TAHITI Approche/Approach 121.300

TWR : TEMAÉ Tour/Tower 118.700

Absence ATS : **AIA** (118.700) FR seulement / only. Obtenir / Obtain QNH auprès de / from TAHITI CTL

RNP APCH

VAR
13° E
(20)



API : Au MAPT, tourner à gauche direct vers TM410 puis MOSMA en montée vers 2100 (2084). Palier d'accélération non étudié.

Missed APCH : At MAPT, turn left direct to TM410 then MOSMA climbing up to 2100 (2084). Acceleration level not studied.

→ THR (NM) 9.9 6.4 3.3 0 REF HGT : ALT AD

| CAT | LNAV | | | MVL / Circling (1) | | MVL / Circling (1) Absence ATS (2) | | DIST MTM12 | | | |
|-----|-------------|------|------|--------------------|------|------------------------------------|------|------------|-------------|-------------|-------------|
| | MDA (H) | RVR | OCH | MDA (H) | VIS | MDA (H) | VIS | NM | 3 | 2 | 1 |
| A | 1120 (1100) | 1500 | 1097 | 1320 (1300) | 1500 | 1400 (1390) | 1500 | ALT (HGT) | 2070 (2054) | 1750 (1734) | 1430 (1414) |
| B | | | | 1450 (1430) | 1600 | 1530 (1520) | 1600 | | | | |

Observations / Remarks : (1) Circuit AD RWY 30 : Main droite. MVL interdites au Sud de la piste / AD circuit RWY 30 : Right hand. Circling prohibited South of RWY. (2) Absence ATS : MVL : HJ seulement si PCL hors service / Circling : daytime only if PCL U/S. Panne de guidage GNSS lors de l'approche / Loss of GNSS guidance during approach : voir/see AIP ENR 1.5.

| | | 70 kt | 85 kt | 100 kt | 110 kt | 120 kt | 130 kt |
|--------------|--------|----------|----------|----------|----------|----------|----------|
| FAF - MTM12 | 3.1 NM | 2 min 39 | 2 min 11 | 1 min 52 | 1 min 41 | 1 min 33 | 1 min 26 |
| FAF - THR | 6.4 NM | 5 min 29 | 4 min 31 | 3 min 50 | 3 min 29 | 3 min 12 | 2 min 57 |
| VSP (ft/min) | | 370 | 450 | 530 | 585 | 635 | 690 |