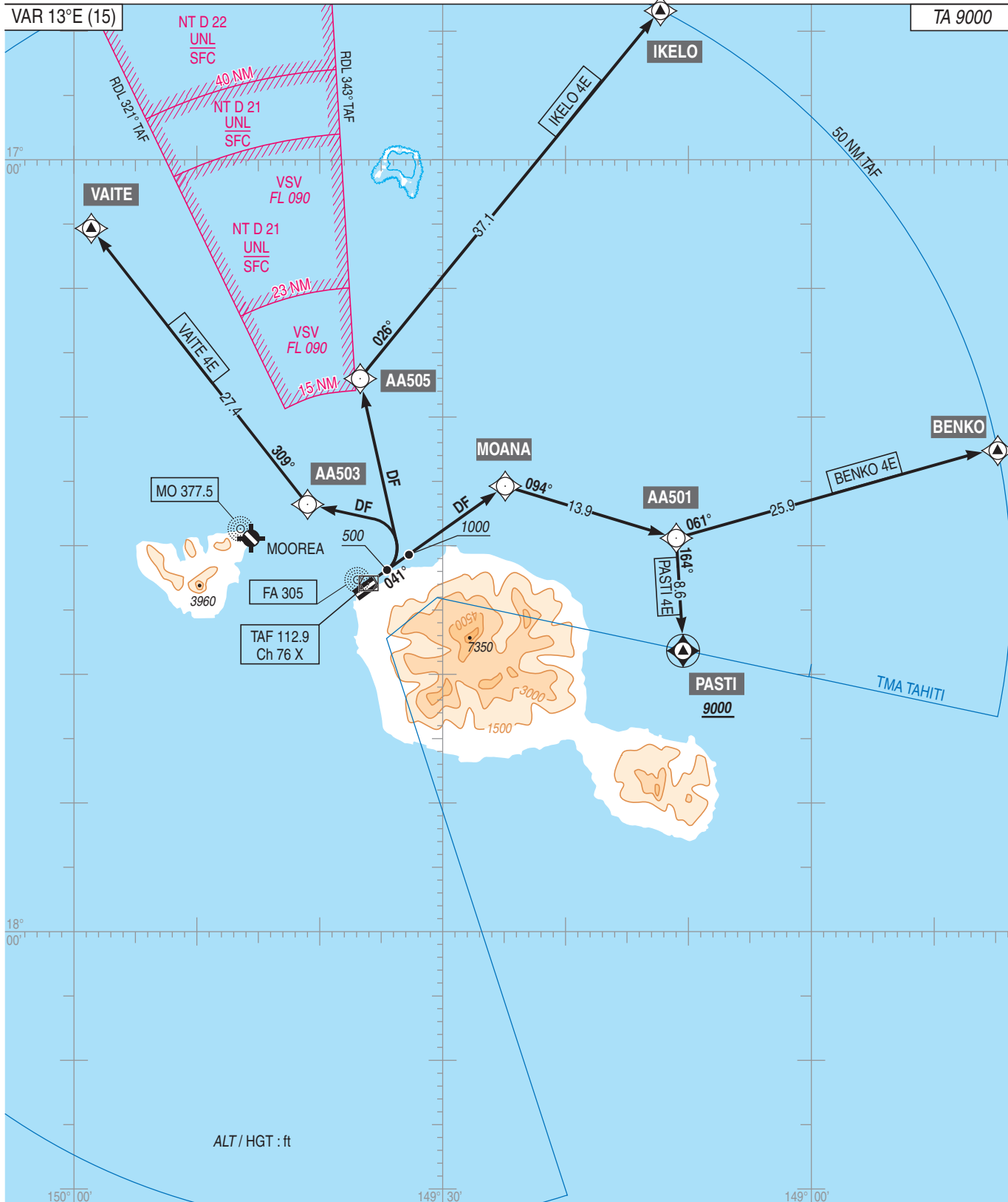


TMA TAHITI
SID RNAV RWY 04 TAHITI FAA'A

ATIS : TAHITI 128.8
APP : TAHITI Approche / Approach 121.3
TWR : TAHITI Tour / Tower 118.1

RNAV 1
GNSS uniquement / only



General instructions
Some departures can be accompanied by speed limitations or minimum slope. In case of impossibility, the pilot must advise ATS at the first contact.
Radiocommunication failure
In VMC : reverse your course and land on the RWY in use at the moment of the departure.
In IMC : continue the flight up to the limits of the CTR, at the last assigned FL, then, proceed climbing towards the FL as stipulated in the current flight plan.