

APPROCHE AUX INSTRUMENTS

TAHITI FAA'A

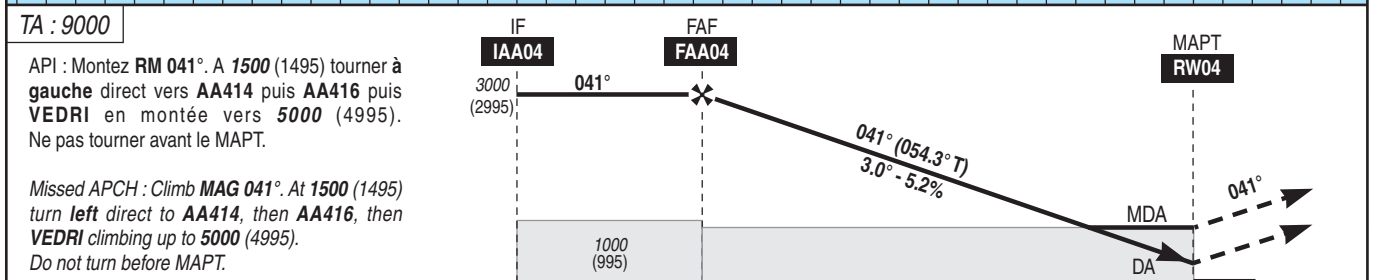
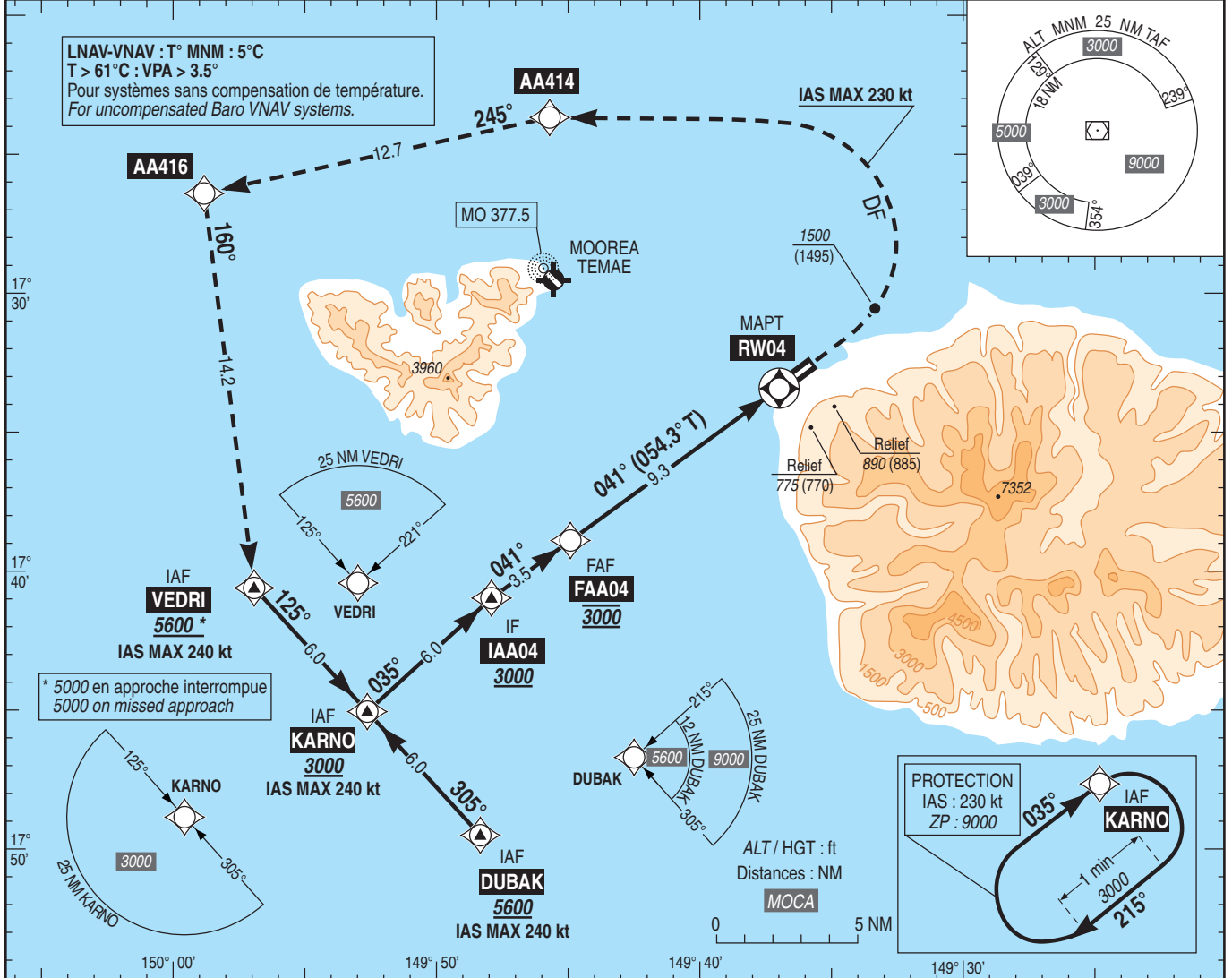
Instrument approach

CAT A B C D

RNP RWY 04

ALT AD : 5 (1 hPa), DTHR : 5

ATIS TAHITI : 128.800 APP : TAHITI Approche/Approach 121.300 TWR : TAHITI Tour/Tower 118.100	RNP APCH	RDH : 50	VAR 13° E (15)
--	----------	----------	----------------------



DTHR ← (NM) 12.8 9.3 0

MNM AD : distances verticales en pieds, RVR et VIS en mètres / vertical distances in feet, RVR and VIS in metres. REF HGT : ALT AD

CAT	LNAV / VNAV			LNAV			MVL / Circling ⁽¹⁾		DIST RWY04									
	DA (H)	RVR	OCH	MDA (H)	RVR	OCH	MDA (H)	VIS	NM	9	8	7	6	5	4	3		
A	610 (610)	1500	606	890 (890)	1500	885	960 (950)	1500	NM	9	8	7	6	5	4	3		
B	620 (620)	1500	616		960 (950)		1600	ALT	2930	2610	2290	1970	1650	1330	1020			
C	630 (630)	2000	626		1050 (1050)		2400	HGT	(2920)	(2600)	(2280)	(1970)	(1650)	(1330)	(1010)			
D	640 (640)	2000	636		1050 (1050)		3600											

Observations / Remarks : Panne de guidage GNSS lors de l'approche / Loss of GNSS guidance during approach : voir / see ENR 1.5
(1) MVL interdites au Sud de la piste / Circling prohibited South of RWY

FAF - DTHR	9.3 NM	70 kt 7 min 59	85 kt 6 min 34	100 kt 5 min 35	115 kt 4 min 52	130 kt 4 min 18	160 kt 3 min 30	185 kt 3 min 01
VSP (ft/min)		370	450	530	610	690	850	980