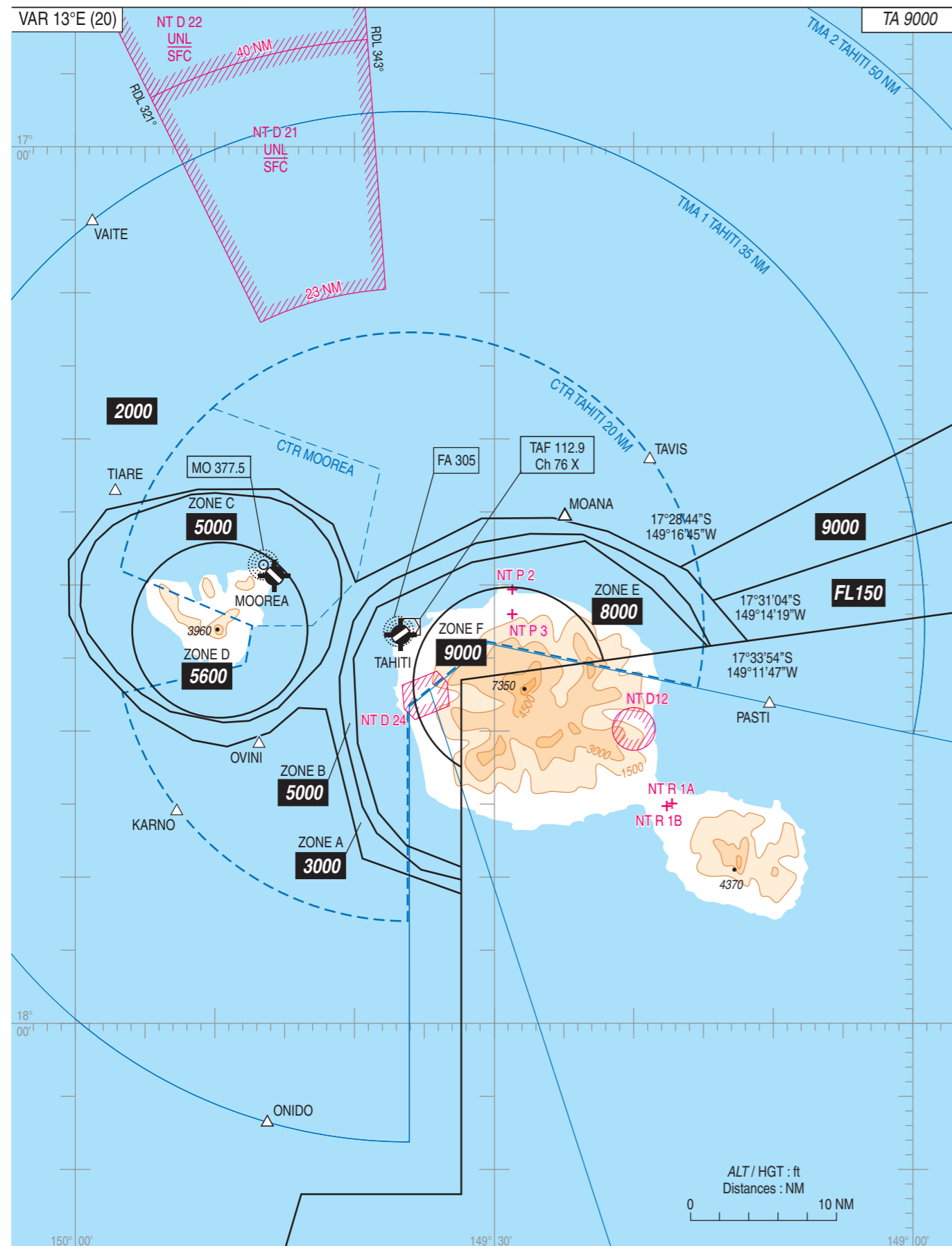


TAHITI
Altitudes Minimales de Sécurité Radar
Minimum Radar Safety Altitudes

ATIS TAHITI 128.800
APP : TAHITI Approche / Approach 121.300
TWR : TAHITI Tour / Tower 118.100



Coordonnées des zones / Areas coordinates :

SECTEUR 2000 ft :
Voir / see AD 2 NTAA AMSR 01 :
Zone délimitée par / Area delimited by :
16°49'18"S, 152°01'08"W -
arc de cercle anti-horaire de rayon 150 NM centré sur /
arc of circle counter-clockwise of a 150 NM radius centered on :
17°36'21"S, 149°32'15"W (Radar de Tahiti) -
19°51'46"S, 150°41'23"W - 19°25'00"S, 150°27'00"W
19°25'00"S, 150°04'56"W - 18°12'00"S, 149°44'00"W
18°11'50"S, 149°32'17"W - 17°51'10"S, 149°32'18"W
17°48'44"S, 149°39'25"W - 17°38'30"S, 149°42'02"W
17°38'25"S, 149°44'00"W - 17°40'06"S, 149°46'03"W
17°41'04"S, 149°49'07"W - 17°40'37"S, 149°51'36"W
17°38'35"S, 149°55'17"W - 17°34'56"S, 149°58'56"W
17°32'05"S, 150°00'26"W - 17°28'16"S, 150°00'28"W
17°24'50"S, 149°57'45"W - 17°23'27"S, 149°51'14"W
17°23'26"S, 149°45'25"W - 17°25'51"S, 149°41'32"W
17°29'48"S, 149°39'55"W - 17°25'27"S, 149°30'54"W
17°25'24"S, 149°25'47"W - 17°26'20"S, 149°21'51"W
17°28'44"S, 149°16'45"W - 16°27'00"S, 147°13'00"W
arc de cercle anti-horaire de rayon 150 NM centré sur /
arc of circle counter-clockwise of a 150 NM radius centered on :
17°36'21"S, 149°32'15"W (Radar de Tahiti) -
15°59'38"S, 151°32'09"W - 16°08'31"S, 151°12'27"W
16°41'16"S, 151°21'56"W - 16°49'13"S, 151°15'58"W
16°59'49"S, 151°15'53"W - 17°00'32"S, 151°44'02"W
16°49'18"S, 152°01'08"W
à l'exclusion de la ZONE 1 à 3400 ft de Huahine /
except Huahine ZONE 1 at 3400 ft. Voir / see AD 2 NTTB AMSR 01.

ZONE A 3000 ft :
Zone délimitée par / Area delimited by :
17°51'10"S, 149°32'18"W -
17°48'44"S, 149°39'25"W - 17°38'30"S, 149°42'02"W
17°38'25"S, 149°44'00"W - 17°40'06"S, 149°46'03"W
17°41'04"S, 149°49'07"W - 17°40'37"S, 149°51'36"W
17°38'35"S, 149°55'17"W - 17°34'56"S, 149°58'56"W
17°32'05"S, 150°00'26"W - 17°28'16"S, 150°00'28"W
17°24'50"S, 149°57'45"W - 17°23'27"S, 149°51'14"W
17°23'26"S, 149°45'25"W - 17°25'51"S, 149°41'32"W
17°29'48"S, 149°39'55"W - 17°25'27"S, 149°30'54"W
17°25'24"S, 149°25'47"W - 17°26'20"S, 149°21'51"W
17°29'01"S, 149°16'08"W - 17°33'54"S, 149°11'47"W
17°34'14"S, 149°14'28"W - 17°31'21"S, 149°16'00"W
17°29'23"S, 149°17'52"W - 17°27'43"S, 149°20'48"W
17°26'32"S, 149°23'40"W - 17°26'30"S, 149°27'26"W
17°27'08"S, 149°31'18"W - 17°29'40"S, 149°37'17"W
17°30'51"S, 149°38'58"W - 17°32'28"S, 149°40'04"W
17°36'18"S, 149°41'04"W - 17°38'02"S, 149°41'01"W
17°40'16"S, 149°40'42"W - 17°45'10"S, 149°39'26"W
17°46'59"S, 149°38'24"W - 17°49'29"S, 149°35'14"W
17°50'11"S, 149°32'18"W - 17°51'10"S, 149°32'18"W
à l'exclusion de la / except ZONE C 5000 ft.

ZONE B 5000 ft :
Zone délimitée par / Area delimited by :
17°50'11"S, 149°32'18"W - 17°49'29"S, 149°35'14"W
17°46'59"S, 149°38'24"W - 17°45'10"S, 149°39'26"W
17°40'16"S, 149°40'42"W - 17°38'02"S, 149°41'01"W
17°36'18"S, 149°41'04"W - 17°32'28"S, 149°40'04"W
17°30'51"S, 149°38'58"W - 17°29'40"S, 149°37'17"W
17°27'08"S, 149°31'18"W - 17°26'30"S, 149°27'26"W
17°26'32"S, 149°23'40"W - 17°27'43"S, 149°20'48"W
17°29'23"S, 149°17'52"W - 17°31'21"S, 149°16'00"W
17°34'14"S, 149°14'28"W - 17°34'15"S, 149°14'39"W
17°30'15"S, 149°18'42"W - 17°26'59"S, 149°23'29"W
17°28'27"S, 149°31'35"W - 17°31'31"S, 149°38'23"W
17°35'02"S, 149°40'04"W - 17°40'51"S, 149°39'46"W
17°45'35"S, 149°38'18"W - 17°47'50"S, 149°36'16"W
17°49'20"S, 149°32'17"W - 17°50'11"S, 149°32'18"W

ZONE C 5000 ft :
Zone délimitée par / Area delimited by :
17°23'49"S, 149°51'42"W - 17°23'42"S, 149°49'59"W
17°24'02"S, 149°46'03"W - 17°24'32"S, 149°44'30"W
17°25'34"S, 149°43'02"W - 17°26'58"S, 149°41'52"W
17°28'18"S, 149°41'12"W - 17°29'35"S, 149°40'56"W
17°30'54"S, 149°40'57"W - 17°34'15"S, 149°41'48"W
17°35'23"S, 149°42'26"W - 17°38'26"S, 149°45'28"W
17°39'18"S, 149°47'33"W - 17°39'25"S, 149°49'23"W
17°38'40"S, 149°53'13"W - 17°37'27"S, 149°55'15"W
17°35'58"S, 149°57'00"W - 17°33'16"S, 149°59'07"W
17°31'26"S, 149°59'38"W - 17°29'13"S, 149°59'31"W
17°28'00"S, 149°59'04"W - 17°27'00"S, 149°58'33"W
17°25'55"S, 149°57'18"W - 17°25'12"S, 149°55'59"W
17°23'49"S, 149°51'42"W
à l'exclusion de la / except ZONE D 5600 ft.

ZONE D 5600 ft :
Cercle de 6 NM de rayon centré sur /
Circle of a 6 NM radius centered on : 17°33'05"S, 149°49'39"W

ZONE E 8000 ft :
Zone délimitée par / Area delimited by :
17°34'15"S, 149°14'39"W - 17°30'15"S, 149°18'42"W
17°26'59"S, 149°23'29"W - 17°28'27"S, 149°31'35"W
17°31'31"S, 149°38'23"W - 17°35'02"S, 149°40'04"W
17°40'51"S, 149°39'46"W - 17°45'35"S, 149°38'18"W
17°47'50"S, 149°36'16"W - 17°49'20"S, 149°32'17"W
17°42'31"S, 149°32'17"W -
arc de cercle de rayon 6.6 NM centré sur /
arc of circle of a 6.6 NM radius centered on : 17°36'45"S, 149°28'53"W -
17°35'08"S, 149°22'10"W - 17°34'15"S, 149°14'39"W

ZONE F 9000 ft :
Zone délimitée par / Area delimited by :
17°35'08"S, 149°22'10"W - 17°36'20"S, 149°32'16"W
17°42'31"S, 149°32'17"W -
arc de cercle de rayon 6.6 NM centré sur /
arc of circle of a 6.6 NM radius centered on : 17°36'45"S, 149°28'53"W
17°35'08"S, 149°22'10"W

SECTEUR 9000 :
Voir / see AD 2 NTAA AMSR 01.

SECTEUR FL150 :
Voir / see AD 2 NTAA AMSR 01.