

APPROCHE AUX INSTRUMENTS

NIMES GARONS

Instrument approach

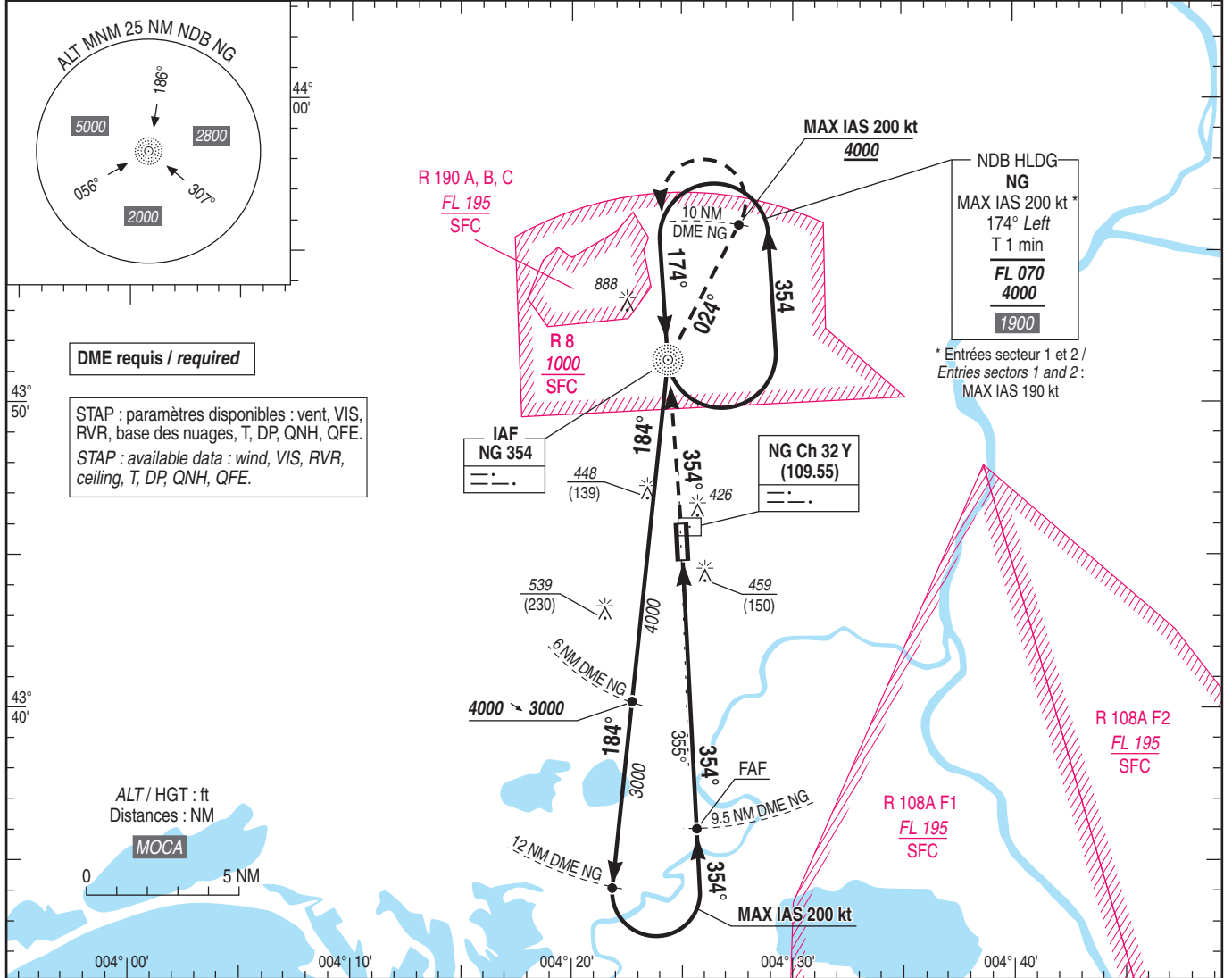
CAT A B C D

NDB RWY 36

ALT AD : 309 (11hPa), THR : 309

ATIS GARONS 129.355
APP : MONTPELLIER Approche / Approach : voir/see AD 2 LFMT COM 01
RHONE Contrôle / Control 119.475
TWR : GARONS Tour / Tower : voir/see AD 2 LFTW COM 01.
Absence ATS : A/A. Obtenir QNH local sur STAP / Obtain local QNH on STAP.

VAR
2°E
(20)

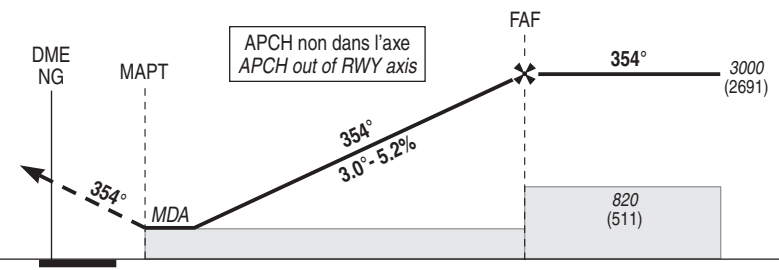


DME requis / required

STAP : paramètres disponibles : vent, VIS, RVR, base des nuages, T, DP, QNH, QFE.
STAP : available data : wind, VIS, RVR, ceiling, T, DP, QNH, QFE.

TA : 5000

API : Monter au **QDM 354°** de NG. A NG poursuivre en montée vers **4000** (3691) MNM **QDR 024°** jusqu'au **10 NM DME NG** (voir contrainte sur carte). Ensuite tourner à **gauche** (MAX IAS 200 kt) vers NG et intégrer l'attente.
Note: Pente ATS. Monter à 5% MNM jusqu'à **4000** (3691).
Missed APCH : Climb on **QDM 354°** from NG. At NG keep on climbing to **4000** (3691) MNM **QDR 024°** till **10 NM DME NG** (see restriction on chart). Then turn **left** (MAX IAS 200 kt) towards NG and enter the holding.
Note : ATS slope. Climb at 5% MNM up to **4000** (3691).



THR ← (NM) 0.8 8.3
DME NG ← (NM) 0 2.0 9.5

MNM AD : distances verticales en pieds, RVR et VIS en mètres / vertical distance in feet, RVR and VIS in metres. REF HGT : ALT AD

CAT	NDB			MVL / Circling (1)		DME NG NM ALT (HGT)	9	8	7	6	5	4	3
	MDA (H)	RVR	OCH	MDA (H)	VIS								
A		1500		750 (450)	1500								
B	710 (400)	1500	396	810 (500)	1600								
C		1800		940 (640)	2400								
D		1800		1010 (700)	3600								

Observations / Remarks : (1) MVL interdites à l'Est de la piste / Circling prohibited East of RWY.