

**APPROCHE AUX INSTRUMENTS**

**HYERES LE PALYVESTRE**

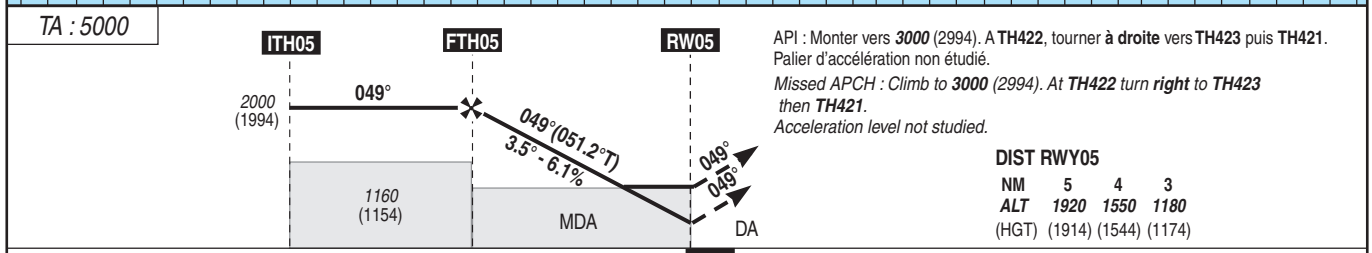
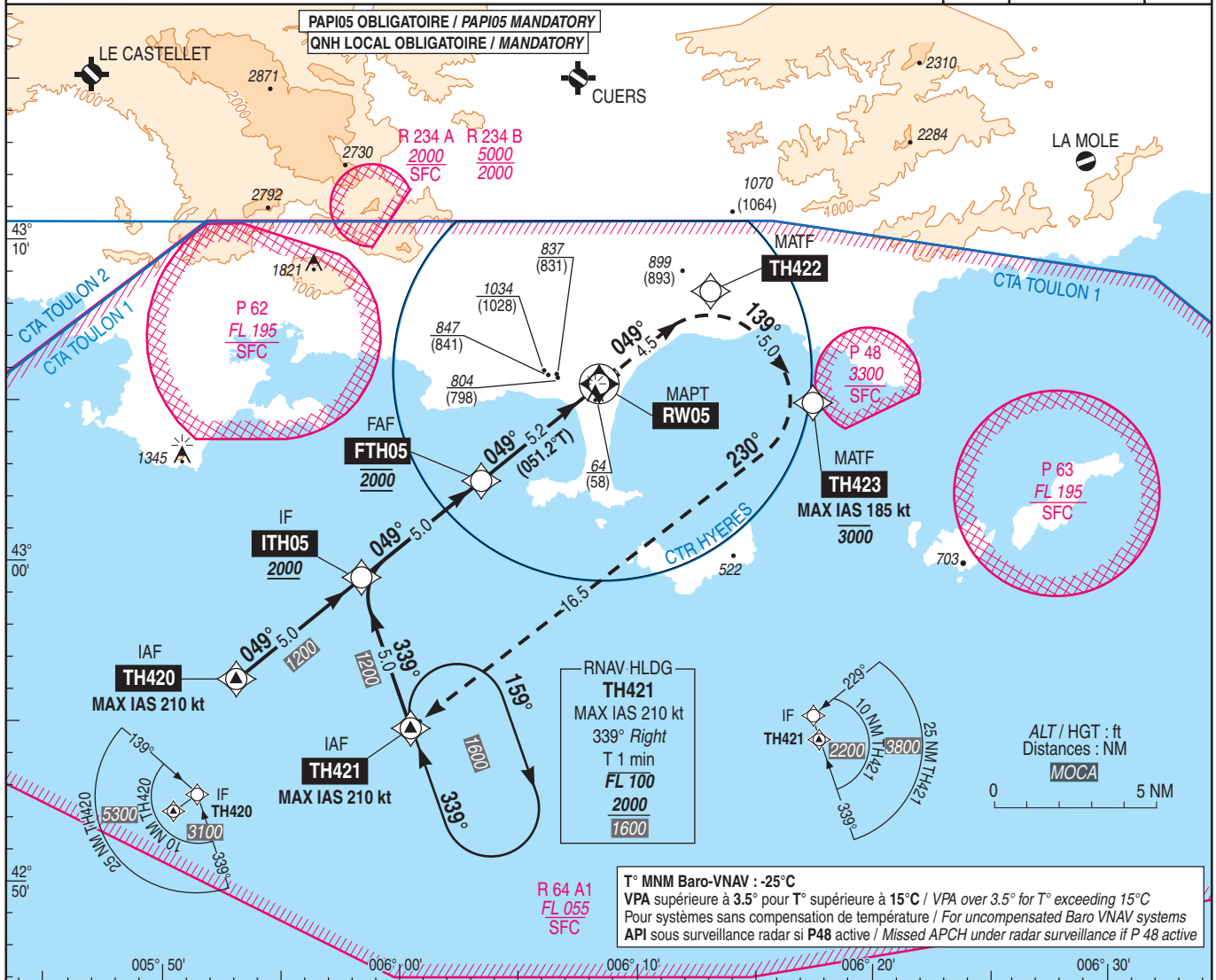
Instrument approach

CAT A B C D

ALT AD : 13, DTNR : 6 (1 hPa)

**RNP RWY05**

ATIS : 129.650 APP : TOULON Approche / Approach 126.325 339.250 (1) - TOULON Radar 125.200 342.575 (1) TOULON Précision : 123.300 232.525 (1) TWR : HYERES Tour / Tower 121.000 121.8(S) 343.325 (1) (1) Réservée MIL / Reserved MIL ACFT	RNAV 1 RNP APCH	EGNOS Ch 94006 E05A RDH : 51	VAR 2°E (20)
---	-----------------------	---------------------------------------	--------------------



MMN AD : distances verticales en pieds, RVR et VIS en mètres / vertical distances in feet, RVR and VIS in metres. REF HGT : ALT THR

CAT	LPV API 2.5%			LPV (1) API 4.5%			LNAV / VNAV			LNAV			MVL (3)	
	DA (H)	RVR (2)	OCH	DA (H)	RVR (2)	OCH	MDA (H)	RVR (2)	OCH	MDA (H)	RVR (2)	OCH	MDA (H)	VIS
A	520 (510)	1500	506			194	880 (870)	1500	870				1100 (1100)	1500
B	530 (520)	1500	520	260 (250)	1300	209	900 (890)	1500	885	910 (910)	1500	903	1140 (1130)	1600
C	540 (530)	2400	530			219	920 (910)	2400	907				1240 (1230)	2400
D	550 (550)	2400	543			231	910 (910)	2400	903				1430 (1430)	3600

Observations / remarks : (1) Minima majorés / increased minimums. (2) de nuit appliquer VIS MVL / by night, apply MVL VIS. (3) MVL interdites au nord de l'axe 05/23 - MVL 13 : interdite / MVL not authorized north of 05/23 runway axis - MVL 13 : not authorized.

FAF - MAPT	5.2 NM	70 kt	85 kt	100 kt	115 kt	130 kt	160 kt	185 kt
VSP (ft/min)		4 min 29	3 min 41	3 min 08	2 min 44	2 min 25	1 min 58	1 min 42
		430	530	620	710	810	990	1150