

APPROCHE AUX INSTRUMENTS

HYERES LE PALYVESTRE

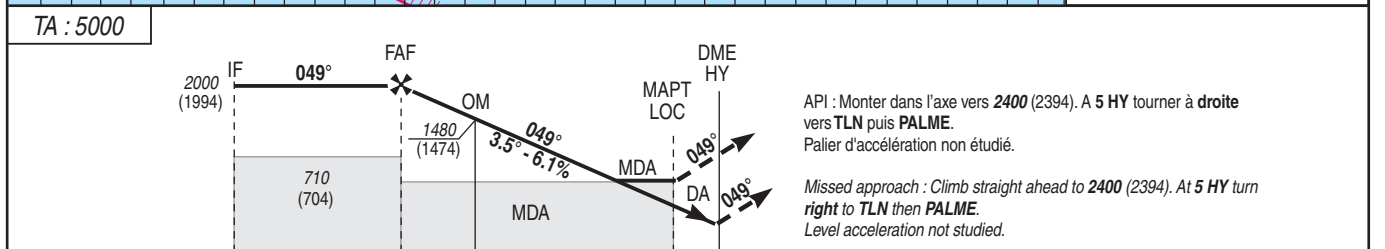
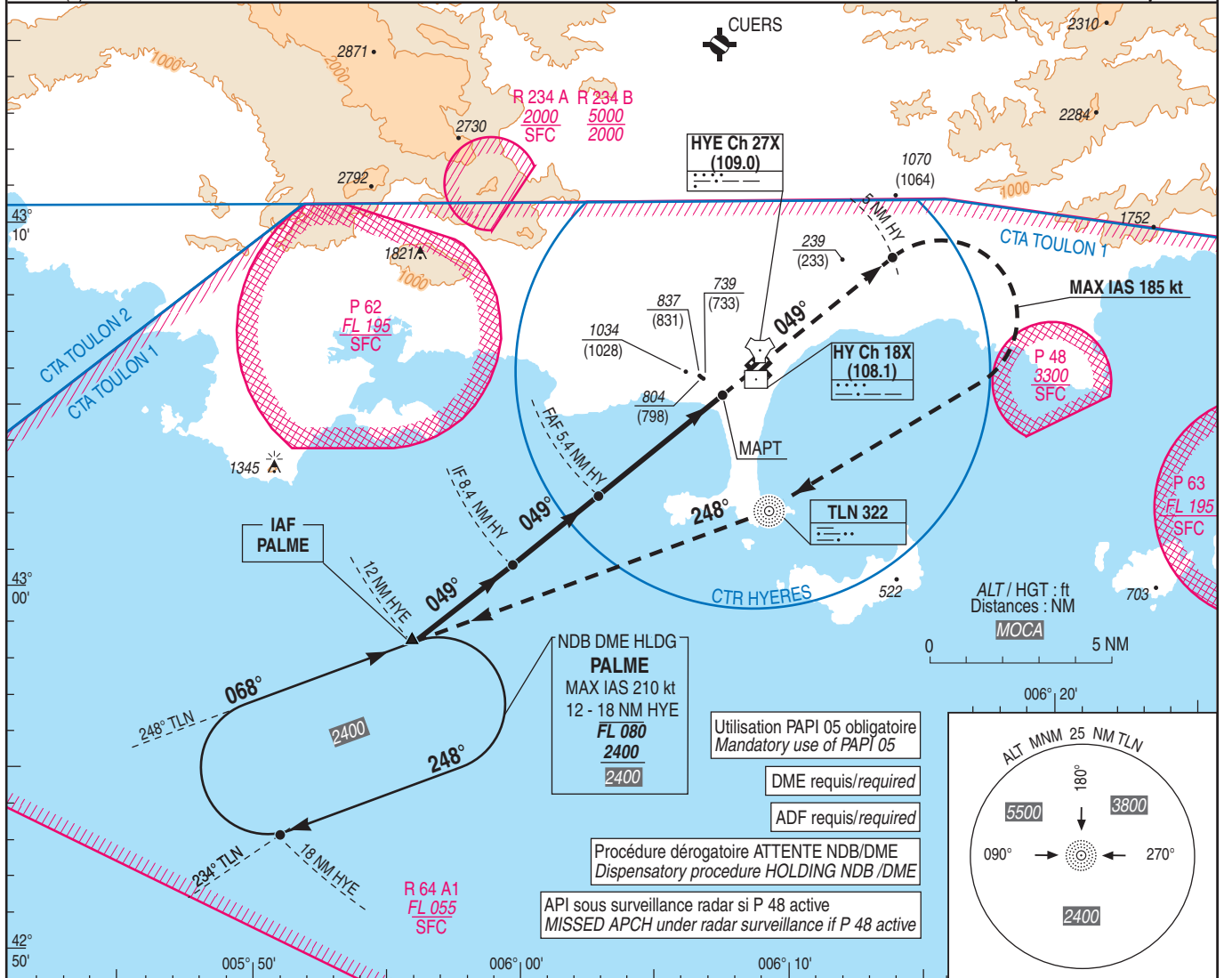
Instrument approach

CAT A B C D

ALT AD : 13, DTHR : 6 (1 hPa)

ILS ou/ou LOC Z RWY05

ATIS : 129.650 APP : TOULON Approche/Approach 126.325 339.250(1) - TOULON Radar 125.200 342.575(1) - TOULON Précision : 123.300 232.525(1) TWR : HYERES Tour/Tower 121.000 121.800(S) 343.325(1) (1) Réserve MIL/Reserved MIL ACFT	ILS - DME HY 108.1 RDH : 51	VAR 2°E (20)
---	-----------------------------------	--------------------



→ DME HY (NM)	8.4	5.4	4	1	0
→ DTHR (NM)	8.3	5.3	3.9	0.9	

MNM AD : distances verticales en pieds, RVR et VIS en mètres. / Vertical distance in feet, RVR and VIS in meters. REF HGT : ALT DTHR

CAT	ILS API 2.5%			ILS API 3%			LOC + DME HY			MVL (1) Circling			DME HY				
	DA (H)	RVR	OCH	DA (H)	RVR	OCH	MDA (H)	RVR	OCH	MDA (H)	VIS	OCH	NM	5	4	3	2
A	340 (330)	1500	326	240 (230)	1200	226		1500		1100 (1100)	1500	1094	ALT	1860	1480	1120	750
B	350 (350)	1500	341	250 (250)	1300	241	750 (740)	1500	736	1140 (1130)	1600	1126	(HGT)	(1854)	(1474)	(1114)	(744)
C	360 (360)	1600	351	260 (260)	1300	251		2400		1240 (1230)	2400	1225					
D	370 (370)	1700	363	270 (270)	1300	263		2400		1430 (1430)	3600	1422					

Observations/Remarks : (1) MVL interdites au Nord de l'axe 05/23 / Circling is forbidden North of center line 05/23.
MVL 13: interdite / prohibited.

FAF - MAPT	4.4 NM	70 kt	85 kt	100 kt	115 kt	130 kt	160 kt	185 kt
		3 min 46	3 min 06	2 min 38	2 min 18	2 min 02	1 min 39	1 min 26
VSP (ft/min)		430	520	615	705	800	985	1135