

**APPROCHE AUX INSTRUMENTS**

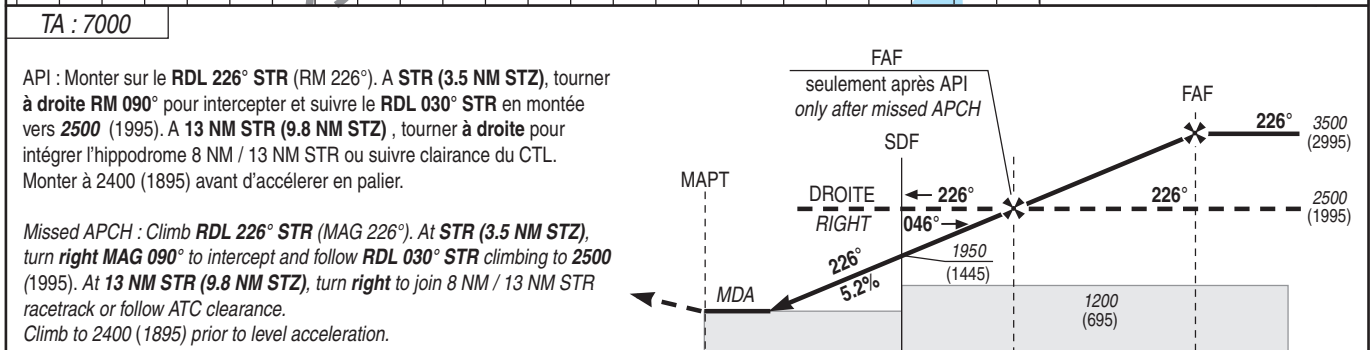
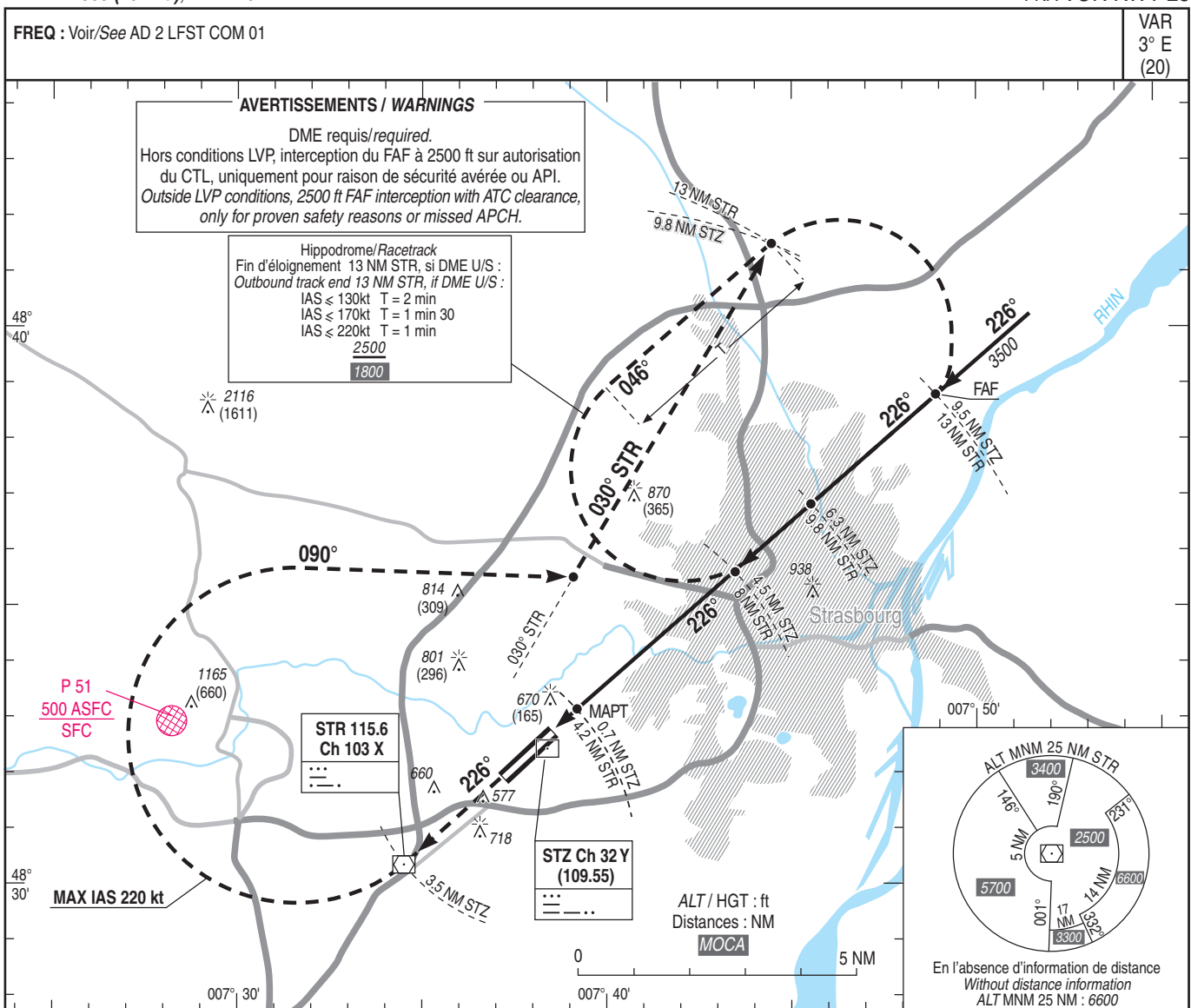
**STRASBOURG ENTZHEIM**

Instrument approach

CAT A B C D

ALT AD : 505 (19 hPa), THR : 491

FNA VOR RWY 23



THR ← (NM)	0.5	4.4	6.1	9.3
DME STZ ← (NM)	0.7	4.5	6.3	9.5
DME STR ← (NM)	4.2	8.0	9.8	13

MNM AD : distances verticales en pieds, RVR et VIS en mètres / vertical distances in feet, RVR and VIS in metres. REF HGT : ALT AD

CAT	VOR			MVL/Circling		DME STR					
	MDA (H)	RVR	OCH	MDA (H)	VIS	NM	9	8	7	6	5
A				1110 (600)	1500	ALT	2260	1941	1623	1305	986
B	930 (420)	1200	419	1120 (610)	1600	(HGT)	(1755)	(1436)	(1118)	(800)	(481)
C				1270 (770)	2400						
D				1570 (1070)	3600						

FAF - THR	9.3 NM	70 kt	7 min 59	85 kt	100 kt	115 kt	130 kt	160 kt	185 kt
FAF - MAPT	8.8 NM	70 kt	7 min 33	85 kt	100 kt	115 kt	130 kt	160 kt	185 kt
VSP (ft/min)		360	440	520	600	680	840	970	