

APPROCHE AUX INSTRUMENTS
Instrument approach

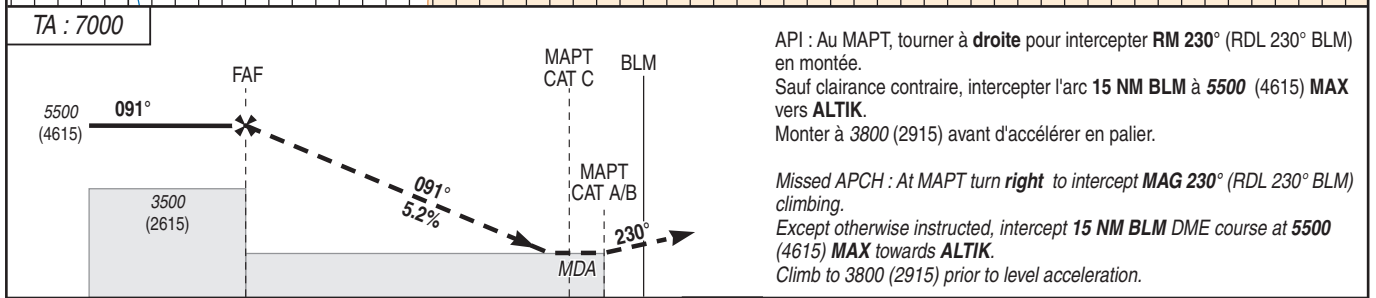
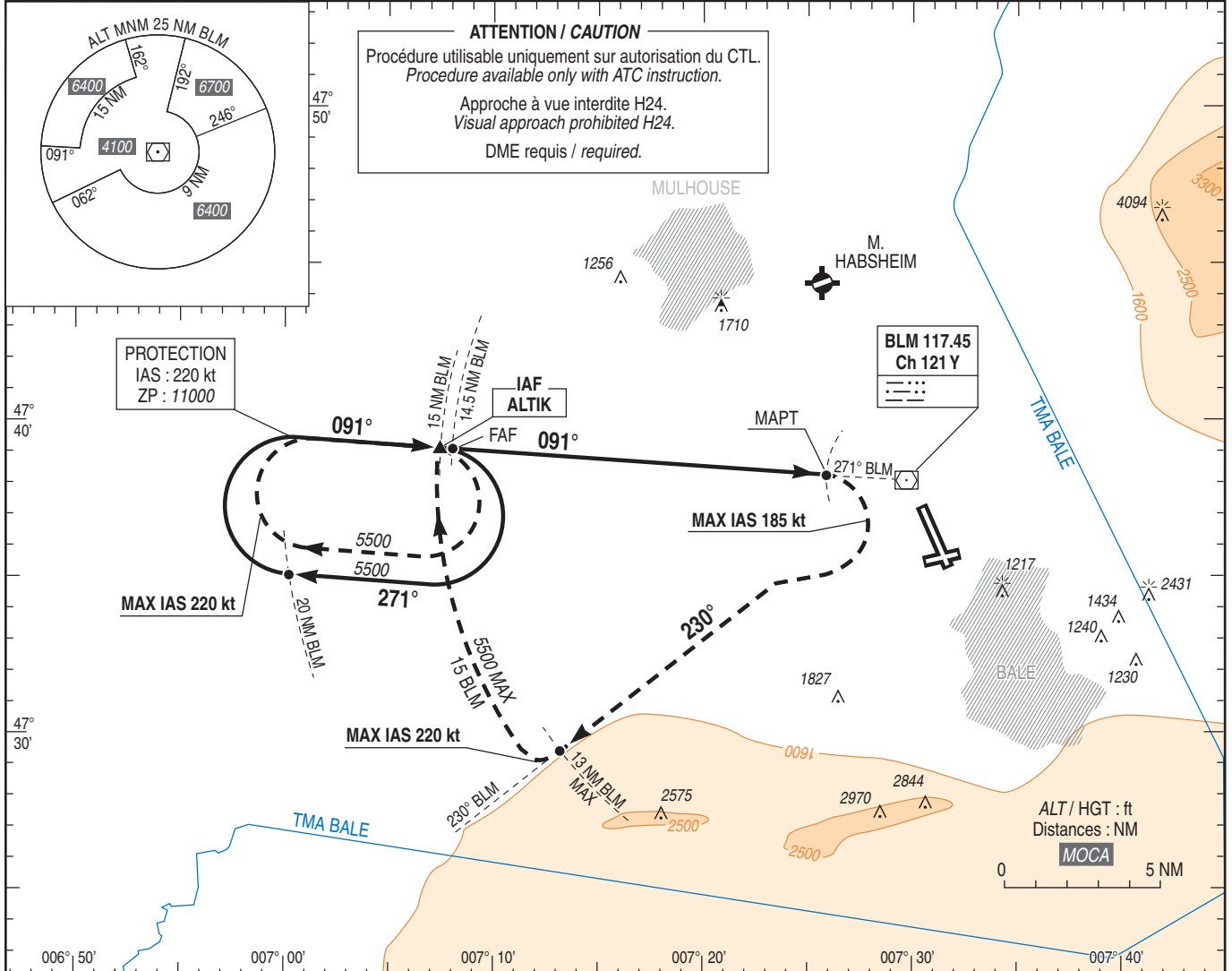
BALE MULHOUSE

CAT A B C

INA VPT A RWY 33

FREQ : voir / see AD 2 LFSB COM 01

VAR
2°E
(20)



→ BLM (NM) 14.5 2.8 2.2 0

MNM AD : distances verticales en pieds, VIS en mètres / vertical distances in feet, VIS in metres. REF HGT : ALT AD

C.A.T	VPT (1)		DME BLM							
	MDA (H)	VIS		NM	10	9	8	7	6	5
A	2000 (1120)	5000	ALT	4090	3780	3460	3190	2830	2510	2200
B			(HGT)	(3205)	(2895)	(2575)	(2305)	(1945)	(1625)	(1315)
C										

Observations / Remarks : (1) Ne pas descendre en-dessous de la MDA avant le début du segment rectiligne d'alignement en finale.
(1) Do not descend below MDA before the beginning of straight line segment on final.