

APPROCHE AUX INSTRUMENTS

QUIMPER PLUGUFFAN

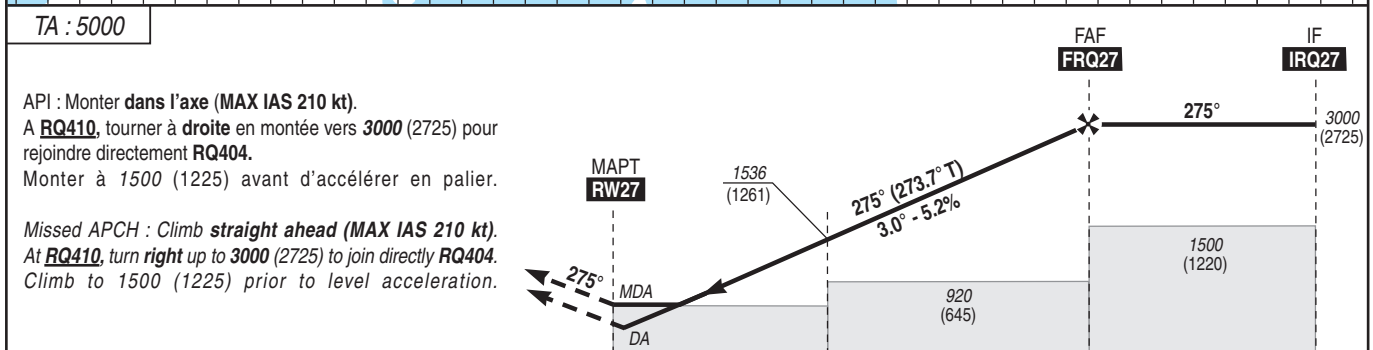
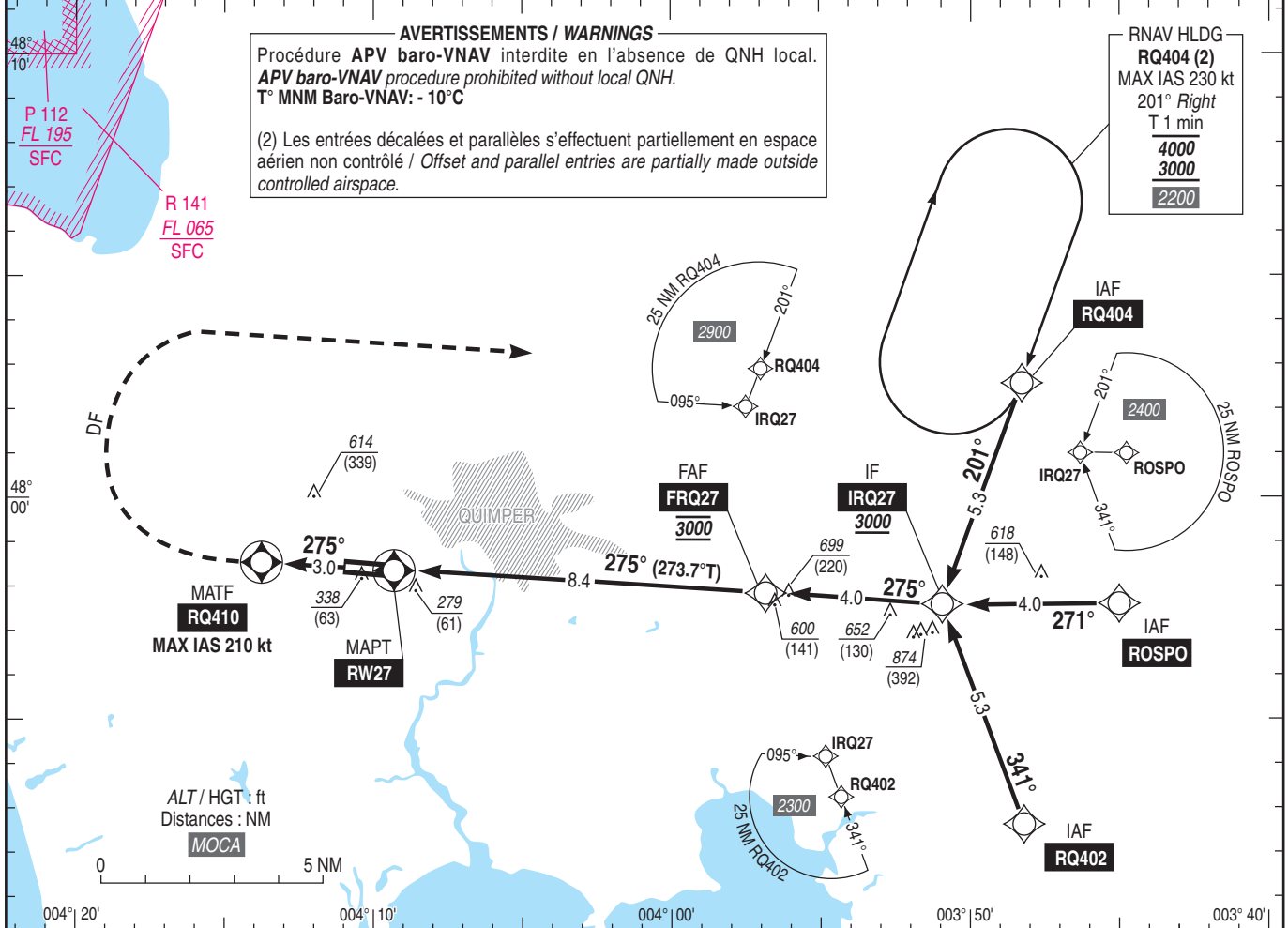
Instrument approach

CAT A B C

ALT AD : 297, THR : 275 (10 hPa)

RNP RWY 27

<p>APP : IROISE Approche/Approach 125.860 (L) TWR : QUIMPER Tour/Tower 118.625 (1) (1) Absence ATS : A/A FR seulement. Obtenir le QNH de BREST auprès de IROISE Approche. A/A FR only. Obtain BREST QNH from IROISE Approach.</p>	<p>RNP APCH</p>	<p>EGNOS Ch 41019 E27A RDH : 50</p>	<p>VAR 1°W (20)</p>
--	------------------------	--	--



THR ← (NM) 0 3.8 8.4 12.4

MNM AD : distances verticales en pieds, RVR et VIS en mètres / vertical distances in feet, RVR and VIS in metres. REF HGT : ALT THR

CAT	LPV			LPV API 3%			LNAV-VNAV			LNAV			MVL / Circling		MVL / Circling absence ATS sans QNH local without local QNH		DIST RW27			
	DA (H)	RVR	OCH	DA (H)	RVR	OCH	DA (H)	RVR	OCH	MDA (H)	RVR	OCH	MDA (H)	VIS	MDA (H)	VIS	NM	2	3	4
A	500 (230)	800	222				550 (280)		271				920 (670)	1500	1040 (770)	1500	5	6	7	8
B	510 (240)	800	234	480 (200)	750	182	560 (290)	900	282	590 (320)	1000	315	920 (670)	1600	1040 (770)	1600	1918	2236	2555	2873
C	520 (250)	800	242				580 (300)		298				1070 (790)	2400	1190 (920)	2400	(1643)	(1961)	(2280)	(2598)

Observations / Remarks : Panne de guidage GNSS lors de l'approche / Loss of GNSS guidance during approach : voir/see AIP ENR 1.5

FAF - RW27	8.4 NM	70 kt	80 kt	90 kt	100 kt	110 kt	120 kt	130 kt	140 kt	150 kt	160 kt
		7 min 12	6 min 18	5 min 36	5 min 02	4 min 35	4 min 12	3 min 53	3 min 36	3 min 22	3 min 09
VSP (ft/min)		370	420	480	530	580	640	690	740	800	850