

APPROCHE AUX INSTRUMENTS

LE MANS ARNAGE

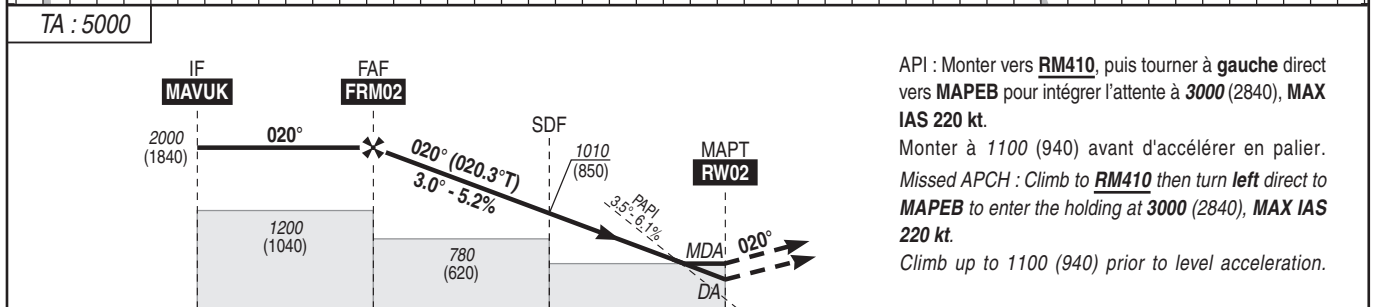
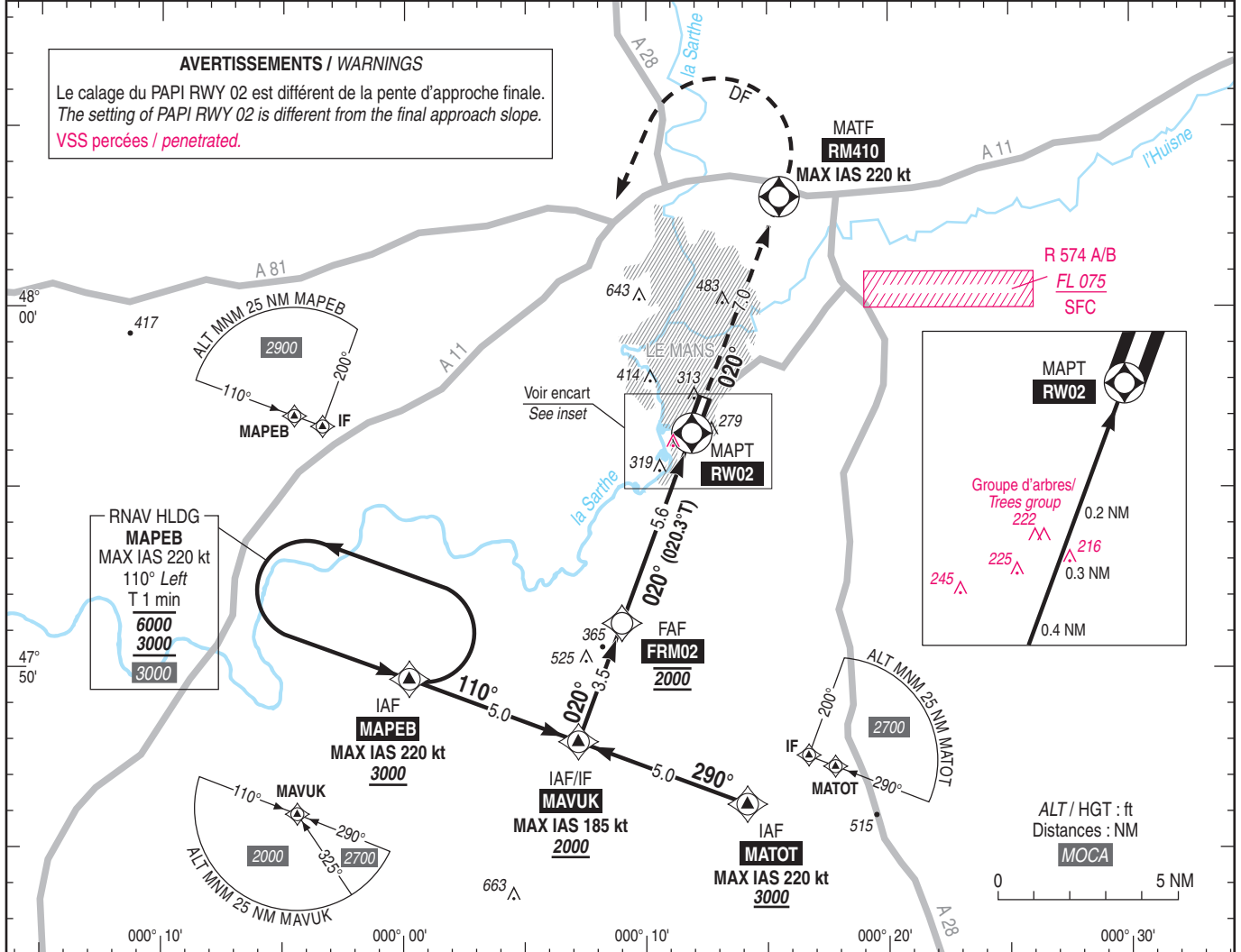
Instrument approach

CAT A B C

ALT AD : 194, THR : 160 (6 hPa)

RNP RWY 02

| | | | |
|--|----------|---------------------------------------|-------------------|
| APP : NIL TWR : NIL AFIS : LE MANS Information 125.900 Absence ATS : A/A (125.900) FR uniquement. Obtenir le QNH de TOURS auprès de PARIS ACC. A/A (125.900) FR only. Obtain TOURS QNH from PARIS ACC. | RNP APCH | EGNOS Ch 72443 E02A RDH : 50 | VAR 0° (20) |
|--|----------|---------------------------------------|-------------------|



API : Monter vers **RM410**, puis tourner à **gauche** direct vers **MAPEB** pour intégrer l'attente à **3000** (2840), **MAX IAS 220 kt**.
Monter à **1100** (940) avant d'accélérer en palier.
Missed APCH : Climb to **RM410** then turn **left** direct to **MAPEB** to enter the holding at **3000** (2840), **MAX IAS 220 kt**.
Climb up to **1100** (940) prior to level acceleration.

(NM) → THR 9.1 5.6 2.5 0
MNM AD : distances verticales en pieds, RVR et VIS en mètres / vertical distances in feet, RVR and VIS in metres. REF HGT : ALT THR

| CAT | LPV | | | LNAV | | | MVL / Circling (1) | | MVL / Circling (1) absence ATS sans/without QNH local | | DIST RW02 | | | | |
|-----|-----------|------|-----|-----------|------|-----|--------------------|------|---|------|-----------|--------|--------|--------|-------|
| | DA (H) | RVR | OCH | MDA (H) | RVR | OCH | MDA (H) | VIS | MDA (H) | VIS | NM | 5 | 4 | 3 | 2 |
| A | 460 (300) | | | | | | 710 (550) | 1900 | 880 (720) | 1900 | ALT | 1810 | 1490 | 1170 | 850 |
| B | 460 (300) | 1750 | 300 | 570 (410) | 1900 | 405 | 780 (620) | 1900 | 950 (790) | 1900 | (HGT) | (1650) | (1330) | (1010) | (690) |
| C | 470 (310) | | | | | | 1040 (880) | 2400 | 1200 (1040) | 2400 | | | | | |

Observations / Remarks : (1) MVL interdites à l'Ouest de la piste. Circuit AD RWY 20 main Gauche / Circling prohibited West of RWY. Left hand circuit RWY 20.
Perte de guidage GNSS durant l'approche / Loss of GNSS guidance during approach : voir / see AIP ENR 1.5.

| | | | | | | | |
|--------------|--------|-------------------|-------------------|--------------------|--------------------|--------------------|--------------------|
| FAF - RW02 | 5.6 NM | 70 kt 4 min 49 | 85 kt 3 min 58 | 100 kt 3 min 22 | 115 kt 2 min 56 | 130 kt 2 min 36 | 160 kt 2 min 06 |
| VSP (ft/min) | | 370 | 450 | 530 | 610 | 690 | 850 |