

APPROCHE AUX INSTRUMENTS

CAEN CARPIQUET

Instrument approach

CAT A B C D

ALT AD : 256, DTDR : 231 (9 hPa)

RNP RWY 13

APP : DEAUVILLE Approche/Approach 120.350 (L)

FREQ : voir/see AD 2 LFRK COM 01

Absence ATS : A/A FR seulement. Obtenir le QNH local sur STAP ou auprès de DEAUVILLE APP.

A/A FR only. Obtain local QNH from STAP or DEAUVILLE APP.

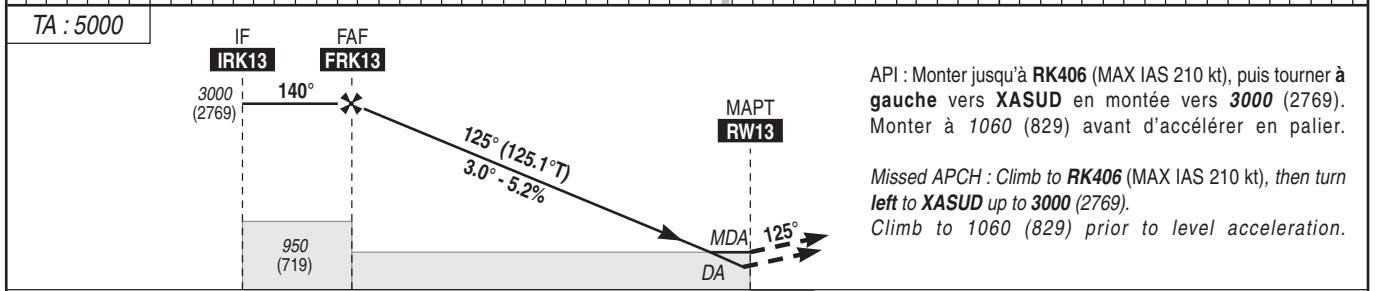
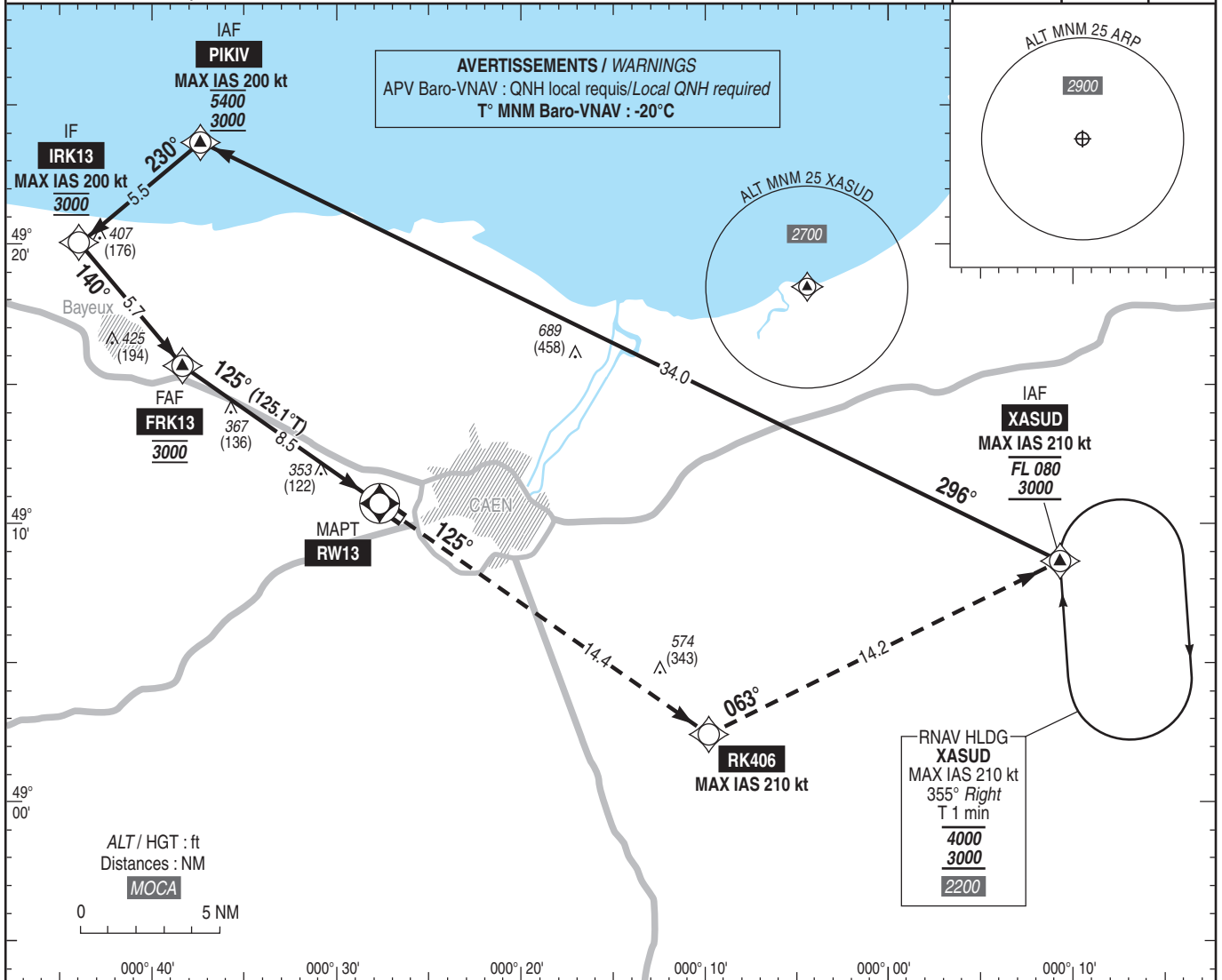
RNP APCH

TCH : 49

VAR

0°

(20)



MNM AD : distances verticales en pieds, RVR et VIS en mètres / vertical distances in feet, RVR and VIS in metres. REF HGT : ALT DTDR

CAT	LNAV/VNAV			LNAV			MVL / Circling (1)		MVL / Circling Absence ATS sans QNH local without local QNH (1)		DIST RW13								
	DA (H)	RVR	OCH	MDA (H)	RVR	OCH	MDA (H)	VIS	MDA (H)	VIS	NM	8	7	6	5	4	3	2	
A	480 (250)	1300	245	680 (450)	1500		780 (550)	1500	890 (660)	1500	8	2830 (2599)	2510 (2279)	2190 (1959)	1870 (1639)	1550 (1319)	1240 (1009)	920 (689)	
B	490 (260)	1300	258		1500	448	870 (640)	1600	980 (750)	1600									
C	500 (270)	1300	266		2100		970 (740)	2400	1080 (850)	2400									
D	510 (280)	1300	276		2100		990 (760)	3600	1100 (870)	3600									

Observations / Remarks : (1) MVL interdites au Nord de la piste / Circling prohibited North of RWY. Panne de guidage GNSS lors de l'approche / GNSS guidance loss during approach : voir / see AIP ENR 1.5.

	8.5 NM	70 kt	80 kt	90 kt	100 kt	110 kt	120 kt	130 kt	140 kt	150 kt	160 kt	170 kt	185 kt
FAF - RW13	8.5 NM	7 min 19	6 min 24	5 min 42	5 min 07	4 min 40	4 min 16	3 min 57	3 min 40	3 min 25	3 min 12	3 min 01	2 min 46
VSP (ft/min)		370	425	480	530	585	635	690	745	795	850	900	980