

**APPROCHE AUX INSTRUMENTS**

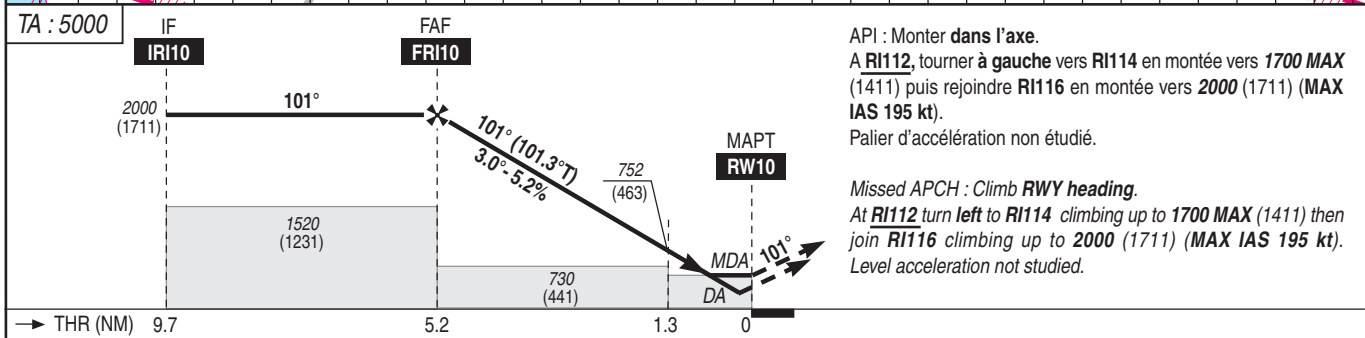
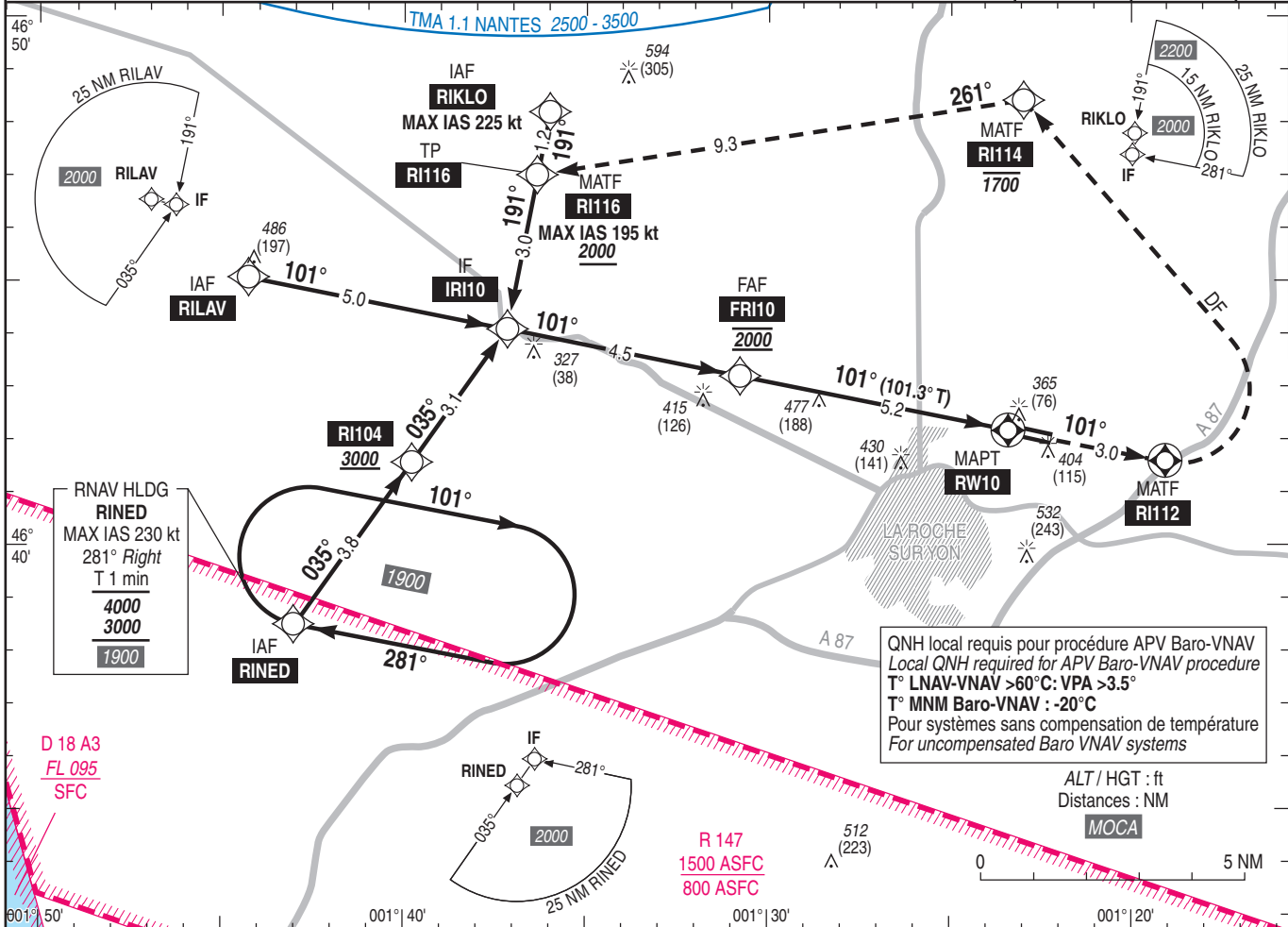
**LA ROCHE SUR YON LES AJONCS**

Instrument approach  
CAT A B C

ALT AD : 299 , THR : 289 (11 hPa)

RNP RWY 10

APP : NANTES Approche/Approach : 124.250 - 119.400 (s)	RNP APCH	EGNOS Ch 93111 E10A RDH : 49	VAR 0° (20)
TWR : NIL			
AFIS : LA ROCHE Information 119.900 (1)			
(1) Absence ATS :			
A/A FR seulement. Obtenir le QNH de NANTES auprès de NANTES Information 130.275 - 119.400 (s) ou ATIS NANTES 126.930			
A/A FR only. Obtain NANTES QNH from NANTES Information 130.275 - 119.400 (s) or NANTES ATIS 126.930			



MNM AD : distances verticales en pieds, RVR et VIS en mètres / vertical distances in feet, RVR and VIS in metres. REF HGT : ALT THR

CAT	LPV			LNAV/VNAV			LNAV			MVL / Circling <sup>(2)</sup>		MVL / Circling <sup>(2)</sup> absence ATS		DIST RW10					
	DA (H)	RVR	OCH	DA (H)	RVR	OCH	MDA (H)	RVR	OCH	MDA (H)	VIS	MDA (H)	VIS	NM	5	4	3	2	1
A			199	540 (250)		230		1500		750 (460)	1500	870 (580)	1500		1930	1610	1295	975	655
B	540 (250)	1300	211	540 (250)	1300	243	650 (360)	1500	354	840 (550)	1600	960 (670)	1600	(HGT)	(1641)	(1321)	(1006)	(686)	(366)
C			219	550 (260)		258		1600		940 (650)	2400	1060 (770)	2400						

Observations / Remarks : (2) Circuit RWY 28 main droite. MVL interdite RWY 28 si PAPI 28 HS / Right hand circuit RWY 28. Circling prohibited RWY 28 if PAPI 28 U/S.  
Panne de guidage GNSS lors de l'approche / Loss of GNSS guidance during approach : voir / see AIP ENR 1.5

FAF - RW10	5.22 NM	70 kt	80 kt	90 kt	100 kt	110 kt	120 kt	130 kt	140 kt	150 kt	160 kt
VSP (ft/min)		4 min 28	3 min 55	3 min 29	3 min 08	2 min 51	2 min 37	2 min 25	2 min 14	2 min 05	1 min 57
		370	420	480	530	580	640	690	740	800	850