

APPROCHE AUX INSTRUMENTS

LORIENT LANN BIHOUE

Instrument approach

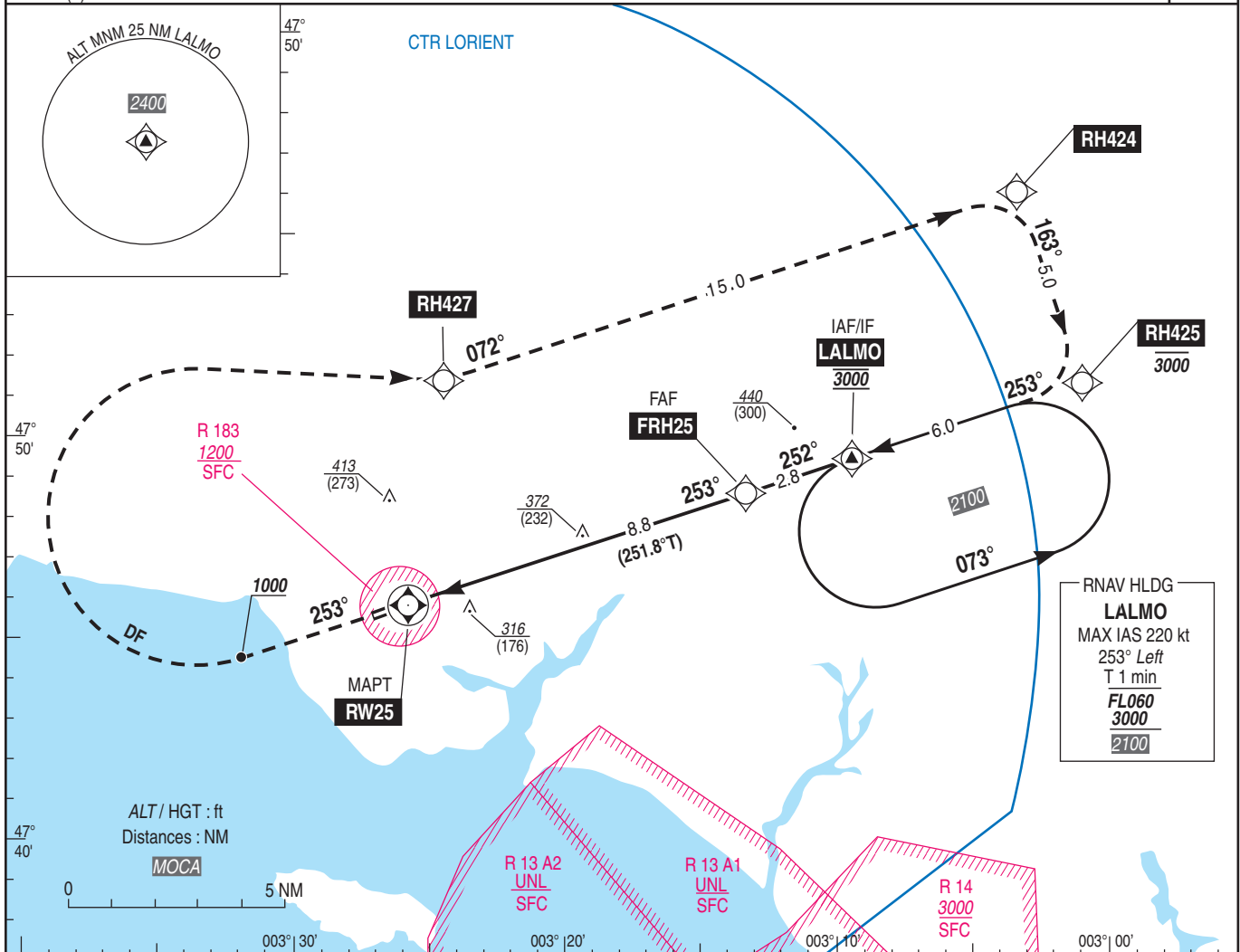
CAT A B C D

RNP RWY 25

ALT AD : 159, DTBR : 140 (5hPa)

ATIS : 129.125
APP : LORIENT Approche / Approach 123.000 122.100 231.875(1)
TWR : LORIENT Tour / Tower 122.700 119.700(S) 281.550(1)
(1) Réserve MIL / Reserved MIL ACFT

VAR
1°W
(20)

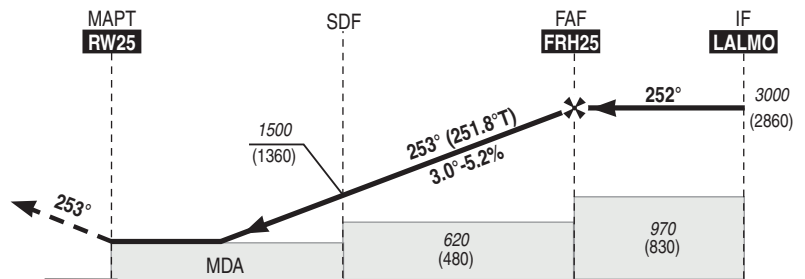


RNAV HLDG
LALMO
MAX IAS 220 kt
253° Left
T 1 min
FL060
3000
2100

TA : 5000

API : Monter dans l'axe vers 3000 (2860). A 1000 (860) tourner à droite route directe RH427, puis RH424, puis RH425, puis LALMO.
Ne pas tourner avant le MAPT.

Missed approach : Climb straight ahead up to 3000 (2860). At 1000 (860) turn right direct to RH427, next RH424, next RH425, and then LALMO.
Do not turn before MAPT.



DTBR ← (NM)

0 4.1 8.8 11.6

MNM AD : distances verticales en pieds, RVR et VIS en mètres / Vertical distances in feet, RVR and VIS in metres.

REF HGT : ALT DTBR

CAT	LNAV			MVL / Circling		DIST RW25							
	MDA (H)	RVR	OCH	MDA (H)	VIS	NM	8	7	6	5	4	3	2
A				710 (570)	1500	ALT	2740	2420	2100	1780	1460	1150	830
B	540 (400)	1100	393	710 (570)	1600	(HGT)	(2600)	(2280)	(1960)	(1640)	(1320)	(1010)	(690)
C				810 (670)	2400								
D				840 (700)	3600								

Observations/Remarks :

	70 kt	85 kt	100 kt	115 kt	130 kt	160 kt	185 kt
FAF - MAPT	8.8 NM	7 min 33	6 min 13	5 min 17	4 min 35	4 min 04	3 min 18
VSP (ft/min)		370	450	530	610	690	850
							2 min 51