

APPROCHE AUX INSTRUMENTS

LORIENT LANN BIHOUE

Instrument approach

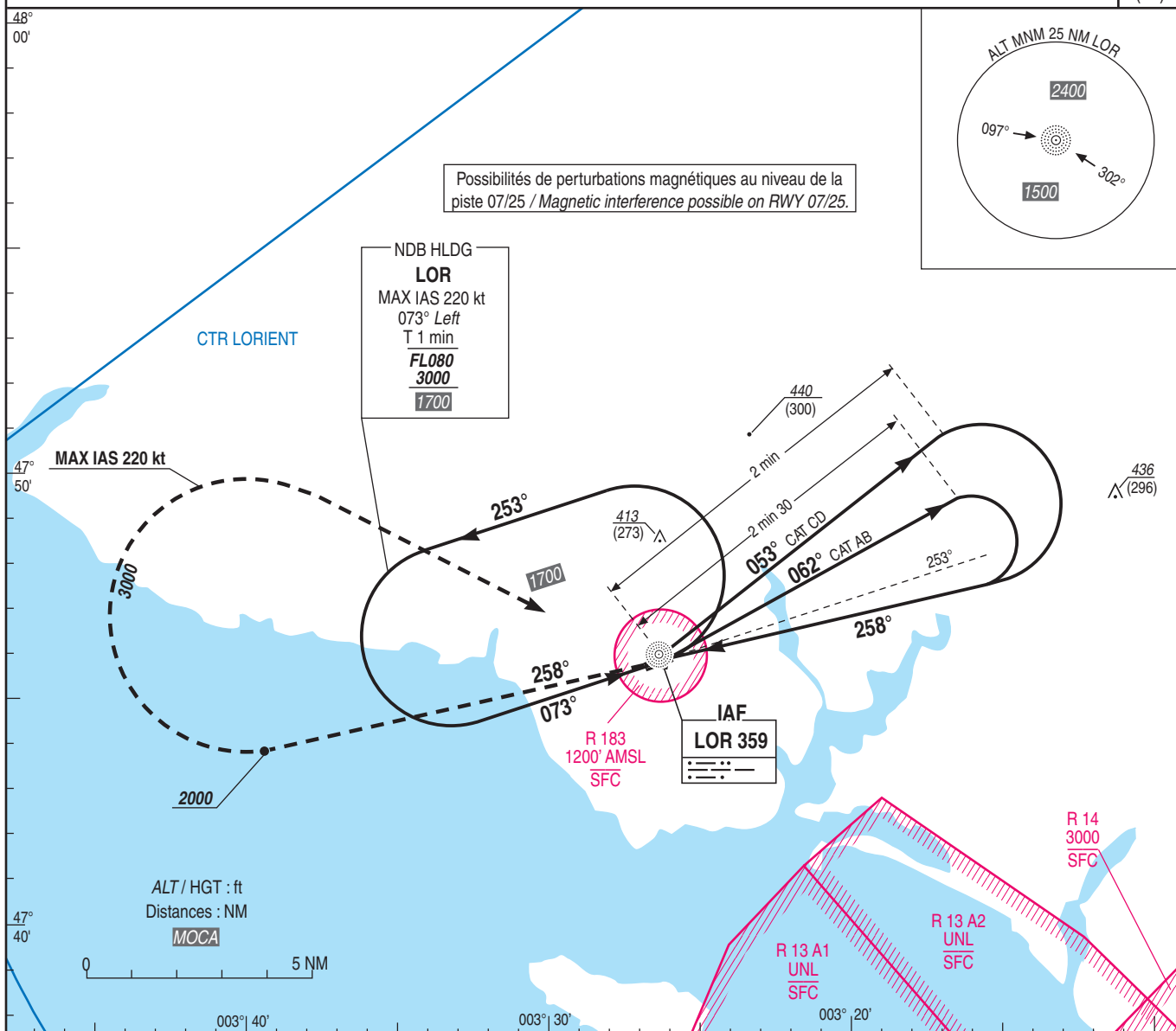
CAT A B C D

ALT AD : 159, DTHR : 140 (5hPa)

NDB RWY 25

VAR
1°W
(20)

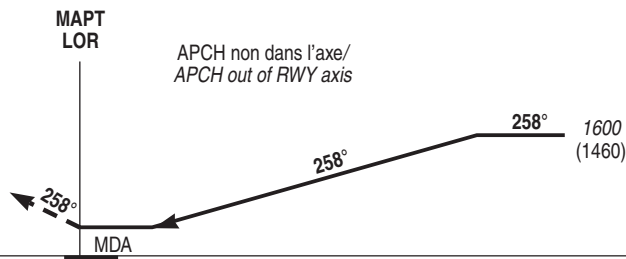
ATIS : 129.125
APP : LORIENT Approche / Approach 123.000 122.100
TWR : LORIENT Tour / Tower 122.700 119.700(S)



TA : 5000

API : Monter **QDR 258° (RM 258°)** vers **3000** (2860).
A **2000** (1860), tourner à **droite** vers **LOR**.
Ne pas tourner avant le **mapt**.
Monter à **2000** (1860) avant d'accélérer en palier.

Missed approach : Climb **QDR 258° (Mag track 258°)**
up to **3000** (2860). At **2000** (1860), turn right to **LOR**.
Do not turn before **mapt**.
Climb to **2000** (1860) prior to level acceleration.



MNM AD : distances verticales en pieds, RVR et VIS en mètres. / Vertical distances in feet, RVR and VIS in metres.

REF HGT : ALT DTHR

CAT	NDB			MVL/Circling	
	MDA (H)	RVR	OCH	MDA (H)	VIS
A		1800		710 (570)	1800
B		1800	549	710 (570)	1800
C	690 (550)	1800		810 (670)	2400
D		1800		840 (700)	3600

Observations/Remarks :