

**APPROCHE AUX INSTRUMENTS**

**LORIENT LANN BIHOUE**

Instrument approach

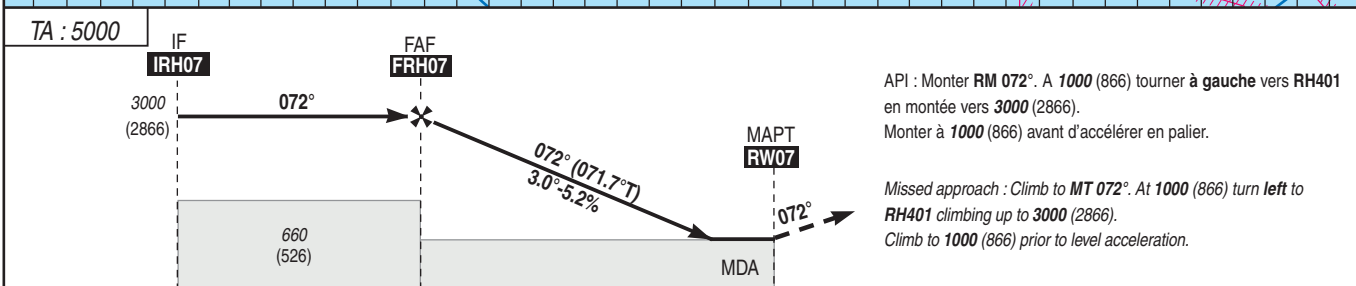
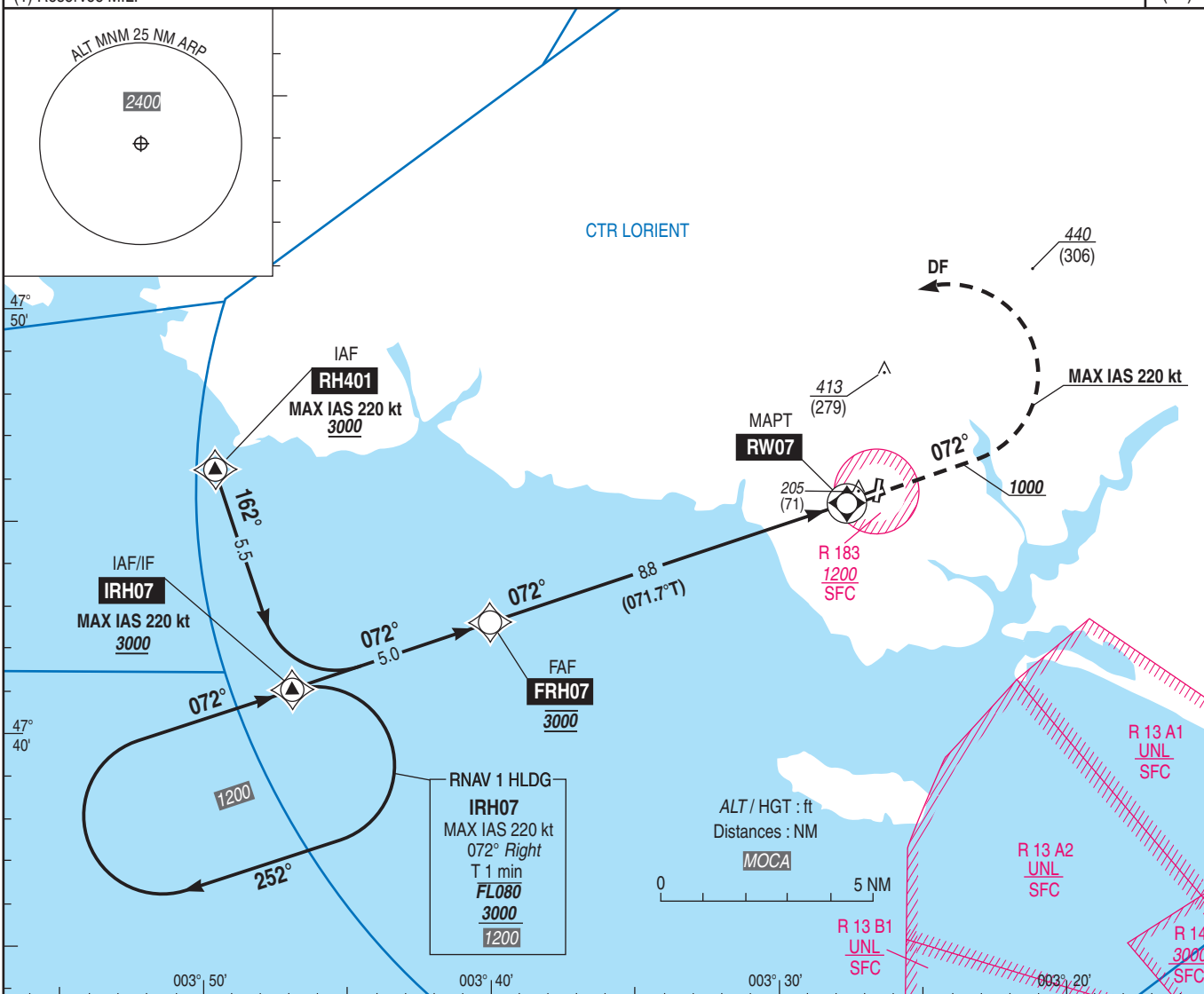
CAT A B C D

ALT AD : 159, THR : 134 (5 hPa)

RNP RWY 07

APP : LORIENT Approche / Approach 123.000 122.100 231.875 (1)  
TWR : LORIENT Tour / Tower 122.700 119.700(S) 281.550 (1)  
ATIS : 129.125  
(1) Réserve MIL.

VAR  
1°W  
(20)



API : Monter RM 072°. A 1000 (866) tourner à gauche vers RH401 en montée vers 3000 (2866).  
Monter à 1000 (866) avant d'accélérer en palier.

Missed approach : Climb to MT 072°. At 1000 (866) turn left to RH401 climbing up to 3000 (2866).  
Climb to 1000 (866) prior to level acceleration.

→ THR (NM) 13.8 8.8 0

MNM AD : distances verticales en pieds, RVR et VIS en mètres./Vertical distances in feet, RVR and VIS in metres. REF HGT : ALT THR

CAT	LNAV			MVL/Circling		DIST RW07								
	MDA (H)	RVR	OCH	MDA (H)	VIS	NM	8	7	6	5	4	3	2	1
A				710 (580)	1500	ALT	2730	2410	2090	1780	1460	1140	820	500
B				710 (580)	1600	(HGT)	(2596)	(2276)	(1956)	(1646)	(1326)	(1006)	(686)	(366)
C	460 (320)	1400	317	810 (680)	2400									
D				840 (700)	3600									

Observations/Remarks :

FAF - MAPT 8.8 NM	70 kt	85 kt	100 kt	115 kt	130 kt	160 kt	185 kt
	7 min 33	6 min 13	5 min 17	4 min 35	4 min 04	3 min 18	2 min 51
VSP (ft/min)	370	450	530	610	690	850	980