

APPROCHE AUX INSTRUMENTS

DINARD PLEURTUIT SAINT MALO

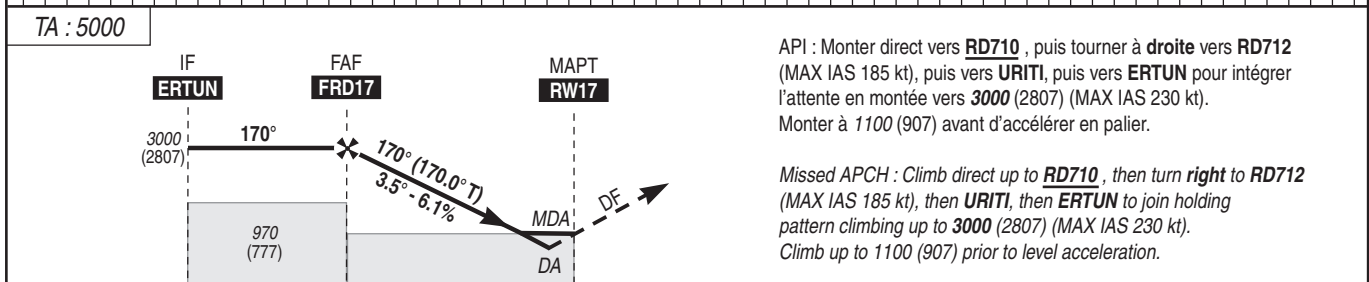
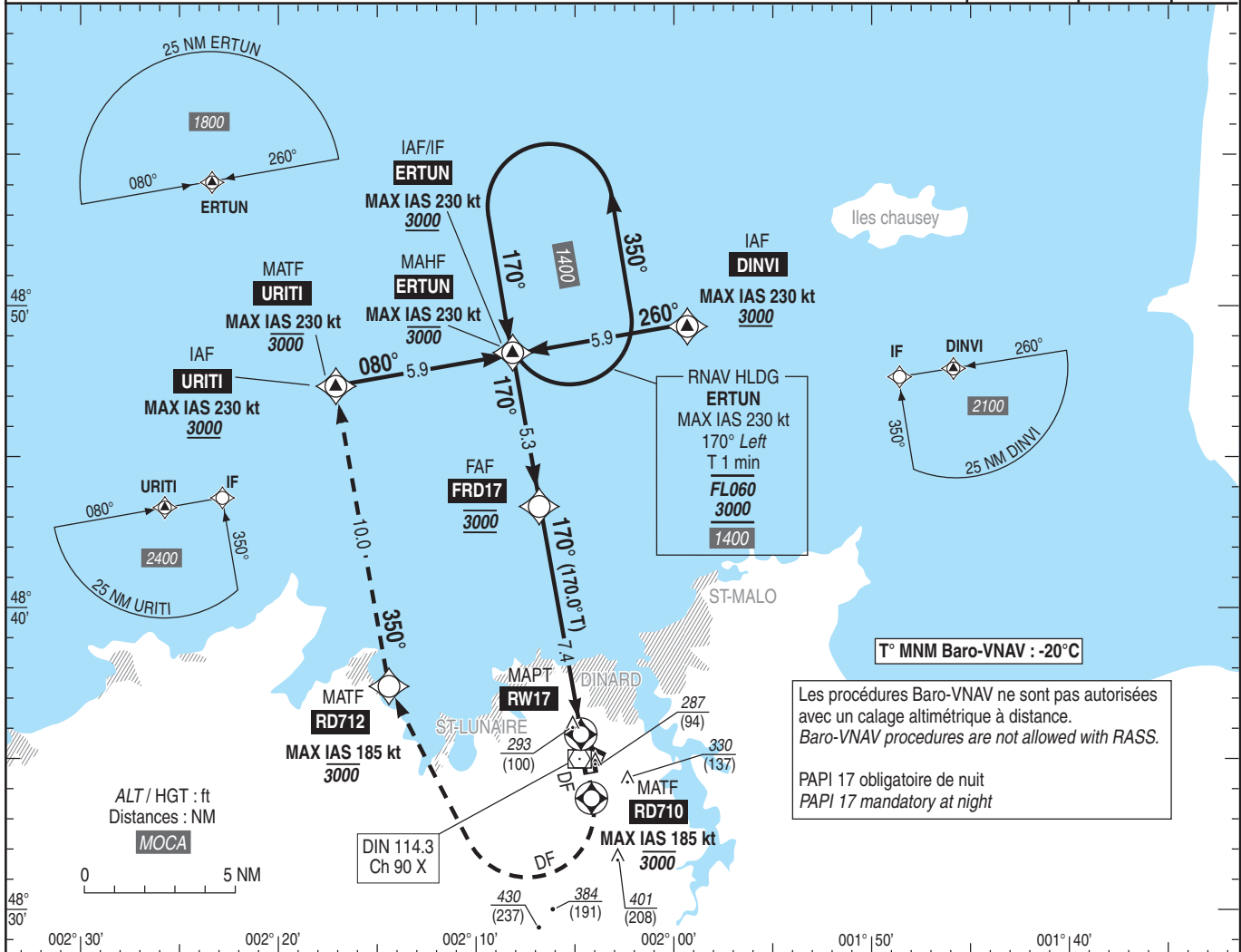
Instrument approach

CAT A B C D

ALT AD : 219, THR : 193 (7 hPa)

RNP RWY 17

<p>ATIS DINARD : 124.580 APP : RENNES Approche / Approach 126.950 TWR : DINARD Tour / Tower 120.150 (1) (1) Absence ATS : A/A : Obtenir le QNH de RENNES auprès de ATIS RENNES 136.405 ou RENNES Approche. A/A : Obtain RENNES QNH from RENNES ATIS 136.405 or RENNES Approach.</p>	<p>RNP APCH</p>	<p>EGNOS Ch 41127 E17A RDH : 50</p>	<p>VAR 0° (20)</p>
---	-----------------	---	----------------------------



→ THR (NM) 12.7 7.4 0

MNM AD : distances verticales en pieds, RVR et VIS en mètres / vertical distances in feet, RVR and VIS in metres. REF HGT : ALT THR

CAT	LPV			LNAV-VNAV			LNAV			MVL / Circling (2)		MVL/Circling Absence ATS (2)		DIST RW17			
	DA (H)	RVR	OCH	DA (H)	RVR	OCH	MDA (H)	RVR	OCH	MDA (H)	VIS	MDA (H)	VIS	NM	7	6	5
A	680 (480)	1500	231	680 (480)	1500	252	680 (480)	1500		680 (480)	1500	820 (630)	1500		2840	2470	2100
B	700 (510)	1600	244	700 (510)	1600	267	700 (510)	1600	383	700 (510)	1600	850 (650)	1600		(2647)	(2277)	(1907)
C	930 (740)	2400	255	930 (740)	2400	289	930 (740)	2400		930 (740)	2400	1080 (890)	2400	4	3	2	
D	990 (800)	3600	267	990 (800)	3600	319	990 (800)	3600		990 (800)	3600	1140 (940)	3600	1730	1360	990	
														(1537)	(1167)	(797)	

Observations / Remarks : Panne de guidage GNSS lors de l'approche / Loss of GNSS guidance during approach : voir / see ENR 1.5.
 (2) MVL interdites RWY 35 si PAPI RWY 35 U/S / Circling prohibited RWY 35 if PAPI RWY 35 U/S.

FAF - RW17	7.4 NM	70 kt 6 min 22	85 kt 5 min 14	100 kt 4 min 27	115 kt 3 min 52	130 kt 3 min 26	160 kt 2 min 47	185 kt 2 min 24
VSP (ft/min)		435	525	620	710	805	990	1145